

KANSAS CORPORATION COMMISSION
OIL & GAS CONSERVATION DIVISION

TEMPORARY ABANDONMENT WELL APPLICATION

OPERATOR: License#
Name:
Address 1:
Address 2:
City: State: Zip:
Contact Person:
Phone:
Contact Person Email:
Field Contact Person:
Field Contact Person Phone:

API No. 15-
Spot Description:
Sec. Twp. S. R.
GPS Location: Lat: Long:
Datum:
County: Elevation:
Lease Name: Well #:
Well Type:
SWD Permit #: ENHR Permit #:
Gas Storage Permit #:
Spud Date: Date Shut-In:

Table with 7 columns: Conductor, Surface, Production, Intermediate, Liner, Tubing. Rows include Size, Setting Depth, Amount of Cement, Top of Cement, Bottom of Cement.

Casing Fluid Level from Surface: How Determined? Date:
Casing Squeeze(s): to w / sacks of cement, to w / sacks of cement. Date:
Do you have a valid Oil & Gas Lease? Yes No
Depth and Type: Junk in Hole at Tools in Hole at Casing Leaks: Yes No Depth of casing leak(s):
Type Completion: ALT. I ALT. II Depth of: DV Tool: w / sacks of cement Port Collar: w / sack of cement
Packer Type: Size: Inch Set at: Feet
Total Depth: Plug Back Depth: Plug Back Method:

Geological Data:

Table with 4 columns: Formation Name, Formation Top, Formation Base, Completion Information. Rows 1 and 2.

UNDER PENALTY OF PERJURY I HEREBY ATTEST THAT THE INFORMATION CONTAINED HEREIN IS TRUE AND CORRECT TO THE BEST OF MY KNOWLEDGE

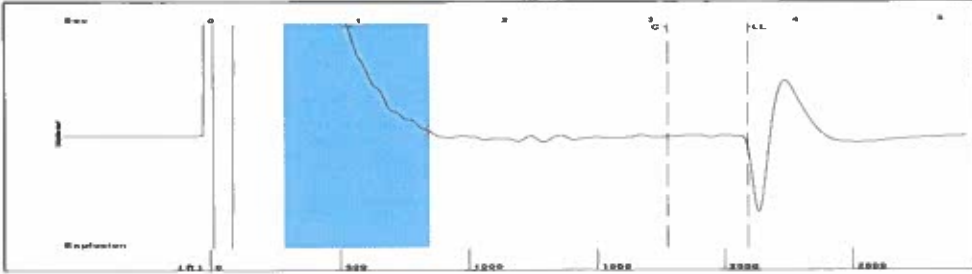
Submitted Electronically

Do NOT Write in This Space - KCC USE ONLY
Date Tested: Results: Date Plugged: Date Repaired: Date Put Back in Service:
Review Completed by: Comments:
TA Approved: Yes Denied Date:

Mail to the Appropriate KCC Conservation Office:

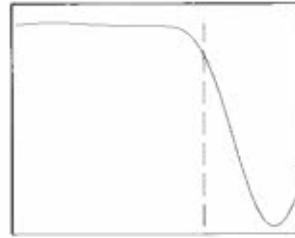
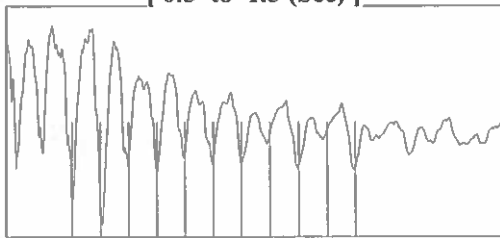
Table with 2 columns: Office Address, Phone. Rows for District Office #1, #2, #3, #4.

Group: TA'D WELLS Well: LOW A-3 (acquired on: 02/07/23 13:44:51)



Filter Type High Pass Automatic Collar Count Yes Time 3.676 sec
 Manual Acoustic Velo 1112.28 ft/s Manual JTS/sec 17.5439 Joints 65.9198 Jts
 Depth 2089.66 ft

[0.5 to 1.5 (Sec)]



Analysis Method: Automatic

Group: TA'D WELLS Well: LOW A-3 (acquired on: 02/07/23 13:44:51)



Change in Pressure 0.04 psi PT10411
 Change in Time 2.00 min Range 0 - ? psi

Group: TA'D WELLS Well: LOW A-3 (acquired on: 02/07/23 13:44:51)

Production Current Potential
 Oil - * - BBL/D
 Water - * - BBL/D
 Gas - * - Mscf/D

IPR Method Vogel
 PBHP/SBHP - * -
 Production Efficiency 0.0

Oil 40 deg API
 Water 1.05 Sp.Gr.H2O
 Gas 0.85 Sp.Gr.AIR

Acoustic Velocity 1136.92 ft/s

Formation Submergence
 Total Gaseous Liquid Column HT (TVD) 474 ft
 Equivalent Gas Free Liquid HT (TVD) 474 ft

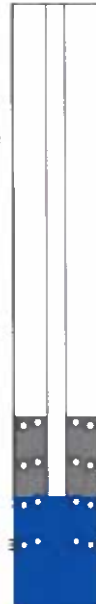
Acoustic Test

Casing Pressure 0.3 psi (g)
 Casing Pressure Buildup 0.0 psi
 2.00 min
 Gas/Liquid Interface Pressure 1.3 psi (g)

Liquid Level Depth 2089.66 ft

Pump Intake Depth 2564.00 ft

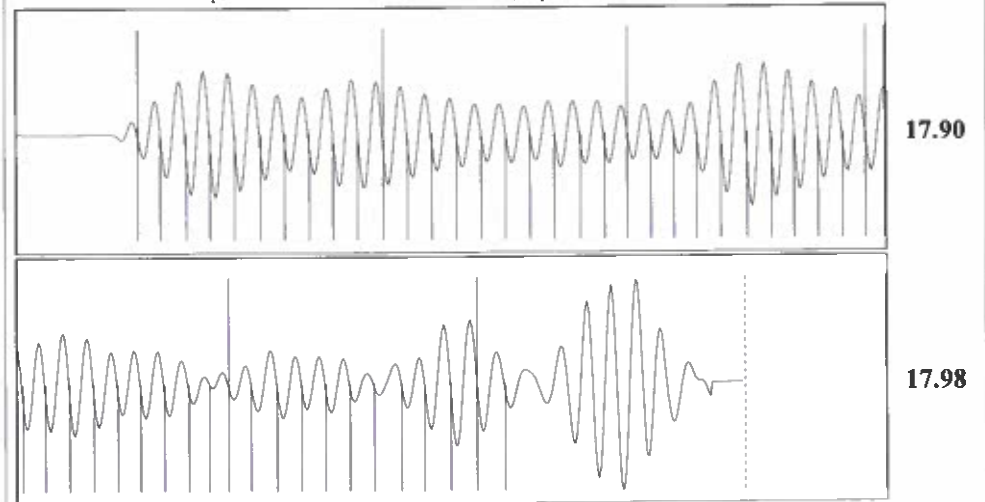
Formation Depth 2846.00 ft



Producing
 Annular Gas Flow 0 Mscf/D
 % Liquid 100 %

Pump Intake 163.4 psi (g)
 Producing BHHP 291.6 psi (g)
 Static BHP - * - psi (g)

Group: TA'D WELLS Well: LOW A-3 (acquired on: 02/07/23 13:44:51)



Acoustic Velocity 1136.92 ft/s Joints counted 51
 Joints Per Second 17.9325 jts/sec Joints to liquid level 65.9198
 Depth to liquid level 2089.66 ft Filter Width 15.5439 19.5439
 Automatic Collar Count Yes Time to 1st Collar 0.28 3.124

February 09, 2023

Katherine McClurkan
Merit Energy Company, LLC
13727 Noel Road, Suite 1200
Dallas, TX 75240

Re: Temporary Abandonment
API 15-129-10205-00-01
Low A 3
NE/4 Sec.08-33S-40W
Morton County, Kansas

Dear Katherine McClurkan:

"Your temporary abandonment (TA) application for the well listed above has been approved. In accordance with K.A.R. 82-3-111 the TA status of this well will expire 02/09/2024.

- * If you return this well to service or plug it, please notify the District Office.
- * If you sell this well you are required to file a Transfer of Operator form, T-1.
- * If the well will remain temporarily abandoned, you must submit a new TA application, CP-111, before 02/09/2024.

You may contact me at the number above if you have questions.

Very truly yours,

Michael Maier"