

KANSAS CORPORATION COMMISSION
OIL & GAS CONSERVATION DIVISION

TEMPORARY ABANDONMENT WELL APPLICATION

OPERATOR: License#
Name:
Address 1:
Address 2:
City: State: Zip:
Contact Person:
Phone:
Contact Person Email:
Field Contact Person:
Field Contact Person Phone:

API No. 15-
Spot Description:
Sec. Twp. S. R.
GPS Location: Lat: Long:
Datum: NAD27 NAD83 WGS84
County: Elevation:
Lease Name: Well #:
Well Type: Oil Gas OG WSW Other:
SWD Permit #: ENHR Permit #:
Gas Storage Permit #:
Spud Date: Date Shut-In:

Table with 7 columns: Conductor, Surface, Production, Intermediate, Liner, Tubing. Rows include Size, Setting Depth, Amount of Cement, Top of Cement, Bottom of Cement.

Casing Fluid Level from Surface: How Determined? Date:
Casing Squeeze(s): to w / sacks of cement, to w / sacks of cement. Date:
Do you have a valid Oil & Gas Lease? Yes No
Depth and Type: Junk in Hole at Tools in Hole at Casing Leaks: Yes No Depth of casing leak(s):
Type Completion: ALT. I ALT. II Depth of: DV Tool: w / sacks of cement Port Collar: w / sack of cement
Packer Type: Size: Inch Set at: Feet
Total Depth: Plug Back Depth: Plug Back Method:

Geological Data:

Table with 4 columns: Formation Name, Formation Top, Formation Base, Completion Information. Rows 1 and 2.

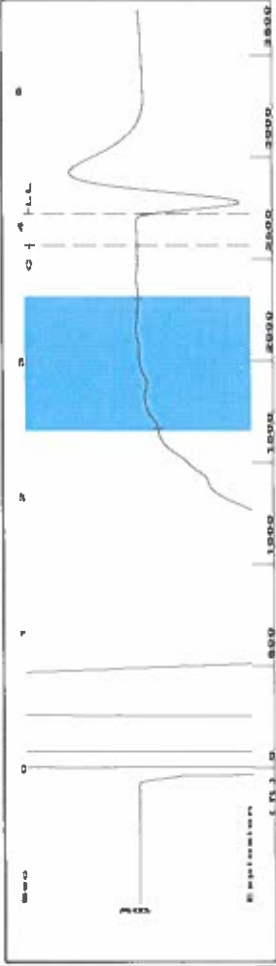
UNDER PENALTY OF PERJURY I HEREBY ATTEST THAT THE INFORMATION CONTAINED HEREIN IS TRUE AND CORRECT TO THE BEST OF MY KNOWLEDGE

Submitted Electronically

Do NOT Write in This Space - KCC USE ONLY
Date Tested: Results: Date Plugged: Date Repaired: Date Put Back in Service:
Review Completed by: Comments:
TA Approved: Yes Denied Date:

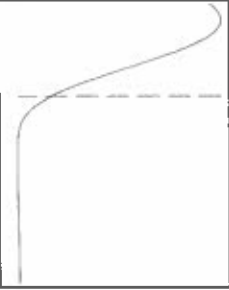
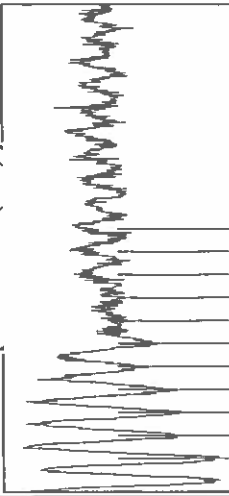
Mail to the Appropriate KCC Conservation Office:

Table with 2 columns: Office Address, Phone. Rows for District Office #1, #2, #3, #4.

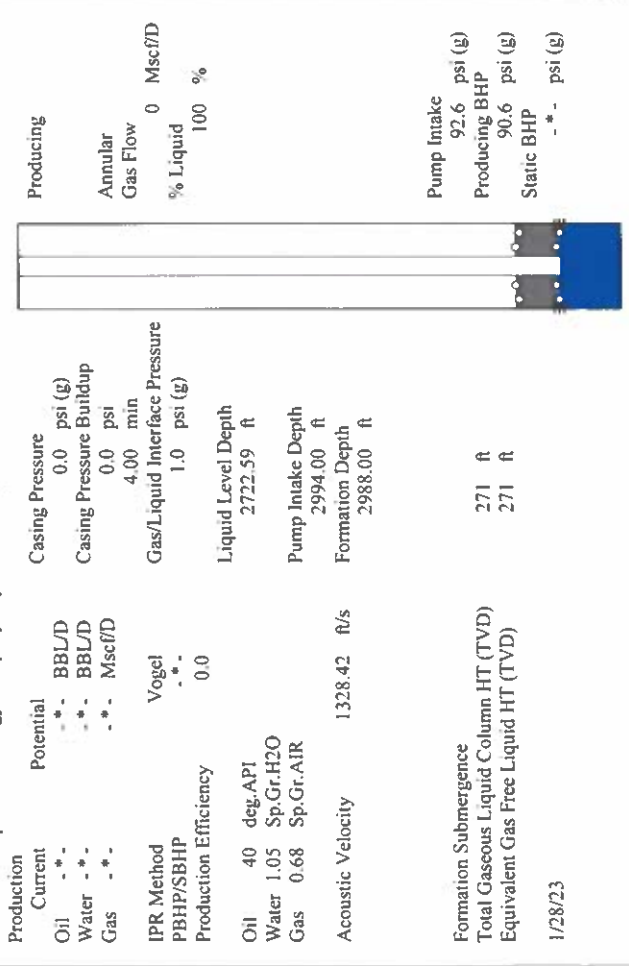


Filter Type High Pass Automatic Collar Count Yes Time 4.099 sec
 Manual Acoustic Velo 343.22 ft/s Manual JTS/sec 21.1864 Joints 85.8861 Jts
 Depth 2722.59 ft

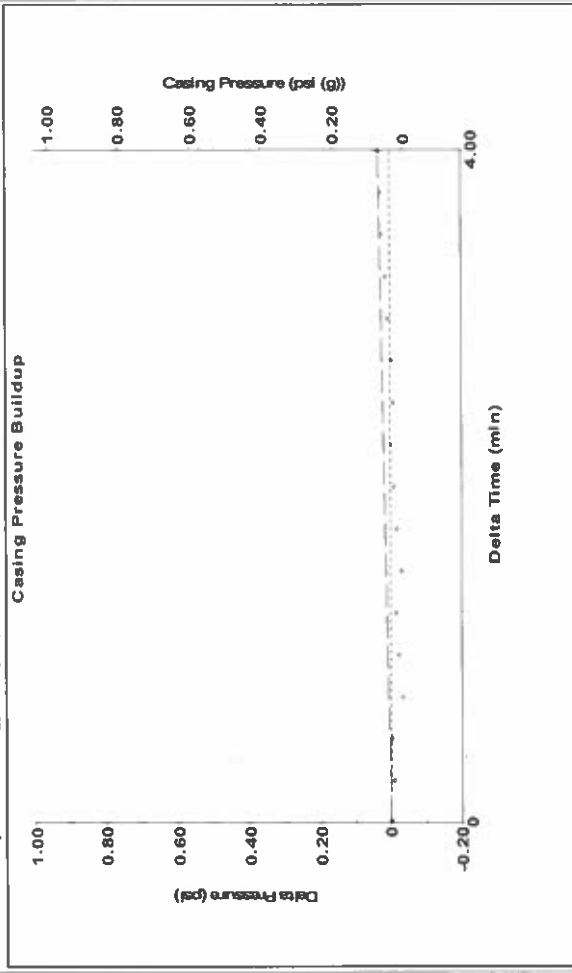
[2.5 to 3.5 (Sec)]



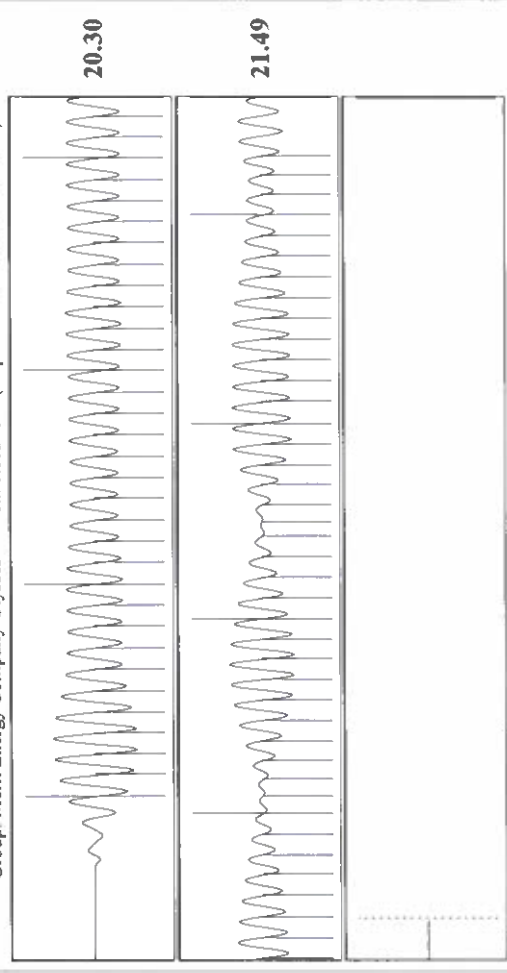
Analysis Method: Automatic



Production	Potential	Casing Pressure	Producing
Oil -*- BBL/D	0.0 psi (g)	0.0 psi	Annular
Water -*- BBL/D	Casing Pressure Buildup	0.0 psi	Gas Flow
Gas -*- Mscf/D	4.00 min	4.00 min	% Liquid
IPR Method Vogel	Gas/Liquid Interface Pressure	1.0 psi (g)	100 %
PBHP/SBHP -*-	Liquid Level Depth		
Production Efficiency 0.0	2722.59 ft		
Oil 40 deg-API	Pump Intake Depth		
Water 1.05 Sp.Gr.H2O	2994.00 ft		
Gas 0.68 Sp.Gr.AIR	Formation Depth		
Acoustic Velocity 1328.42 ft/s	2988.00 ft		
Formation Submergence			
Total Gaseous Liquid Column HT (TVD)	271 ft		
Equivalent Gas Free Liquid HT (TVD)	271 ft		
1/28/23			



Change in Pressure 0.03 psi PT18865 Range
 Change in Time 4.00 min



Acoustic Velocity 1328.42 ft/s Joints counted 73
 Joints Per Second 20.9529 Jts/sec 85.8861
 Depth to liquid level 2722.59 ft Filter Width 19.1864
 Automatic Collar Count Yes Time to 1st Collar 3.864

February 16, 2023

Katherine McClurkan
Merit Energy Company, LLC
13727 Noel Road, Suite 1200
Dallas, TX 75240

Re: Temporary Abandonment
API 15-067-20362-00-00
Reed C 2
NW/4 Sec.20-28S-35W
Grant County, Kansas

Dear Katherine McClurkan:

"Your temporary abandonment (TA) application for the well listed above has been approved. In accordance with K.A.R. 82-3-111 the TA status of this well will expire 02/16/2024.

- * If you return this well to service or plug it, please notify the District Office.
- * If you sell this well you are required to file a Transfer of Operator form, T-1.
- * If the well will remain temporarily abandoned, you must submit a new TA application, CP-111, before 02/16/2024.

You may contact me at the number above if you have questions.

Very truly yours,

Michael Maier"