

KANSAS CORPORATION COMMISSION
OIL & GAS CONSERVATION DIVISION

TEMPORARY ABANDONMENT WELL APPLICATION

OPERATOR: License#
Name:
Address 1:
Address 2:
City: State: Zip:
Contact Person:
Phone:
Contact Person Email:
Field Contact Person:
Field Contact Person Phone:

API No. 15-
Spot Description:
Sec. Twp. S. R.
GPS Location: Lat: Long:
Datum: NAD27 NAD83 WGS84
County: Elevation:
Lease Name: Well #:
Well Type: Oil Gas OG WSW Other:
SWD Permit #: ENHR Permit #:
Gas Storage Permit #:
Spud Date: Date Shut-In:

Table with 7 columns: Conductor, Surface, Production, Intermediate, Liner, Tubing. Rows include Size, Setting Depth, Amount of Cement, Top of Cement, Bottom of Cement.

Casing Fluid Level from Surface: How Determined? Date:
Casing Squeeze(s): to w / sacks of cement, to w / sacks of cement. Date:
Do you have a valid Oil & Gas Lease? Yes No
Depth and Type: Junk in Hole at Tools in Hole at Casing Leaks: Yes No Depth of casing leak(s):
Type Completion: ALT. I ALT. II Depth of: DV Tool: w / sacks of cement Port Collar: w / sack of cement
Packer Type: Size: Inch Set at: Feet
Total Depth: Plug Back Depth: Plug Back Method:

Geological Data:

Table with 4 columns: Formation Name, Formation Top, Formation Base, Completion Information. Rows 1 and 2.

UNDER PENALTY OF PERJURY I HEREBY ATTEST THAT THE INFORMATION CONTAINED HEREIN IS TRUE AND CORRECT TO THE BEST OF MY KNOWLEDGE

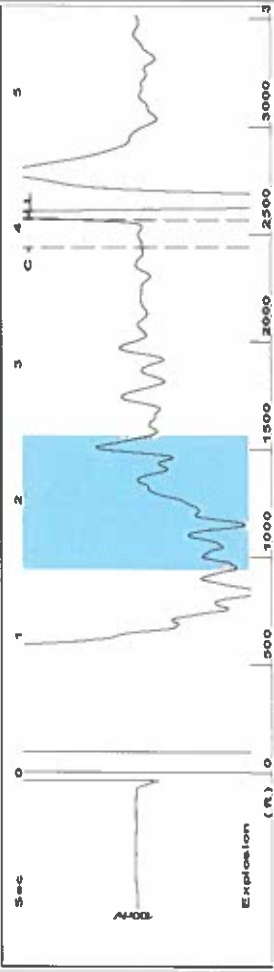
Submitted Electronically

Do NOT Write in This Space - KCC USE ONLY
Date Tested: Results: Date Plugged: Date Repaired: Date Put Back in Service:
Review Completed by: Comments:
TA Approved: Yes Denied Date:

Mail to the Appropriate KCC Conservation Office:

Table with 2 columns: Office Address, Phone. Rows for District Office #1, #2, #3, #4.

Group: TAD Well: Dyck A-1 (acquired on: 02/12/23 11:46:25)



Change in Pressure -0.12 psi PT 18865 Range
 Change in Time 4.00 min

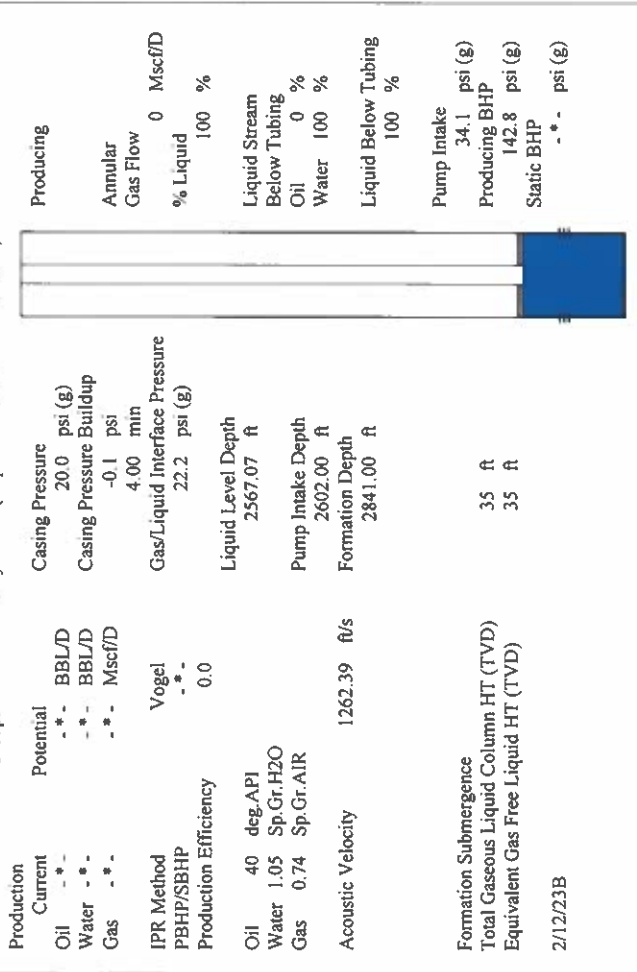
1.5 to 2.5 (Sec)



Filter Type High Pass Automatic Collar Count Yes Time 4.067 sec
 Manual Acoustic Veloc 1.243 14 ft/s Manual JTS/sec 19.6078 Joints 80.9801 Jts
 Depth 2567.07 ft

Analysis Method: Automatic

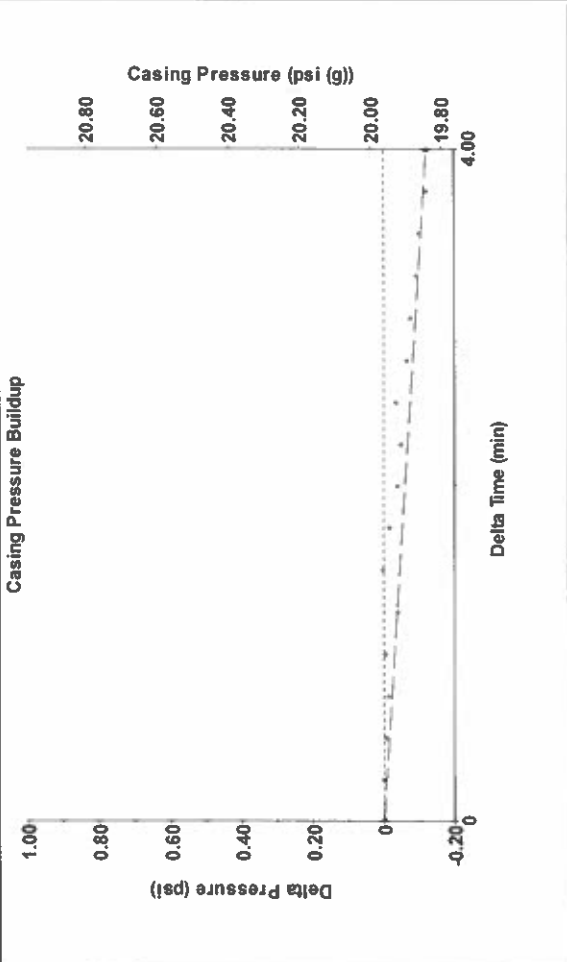
Group: TAD Well: Dyck A-1 (acquired on: 02/12/23 11:46:25)



Producing
 Annular Gas Flow 0 Mscf/D
 % Liquid 100 %
 Liquid Stream Below Tubing Oil 0 % Water 100 %
 Liquid Below Tubing 100 %
 Pump Intake 34.1 psi (g)
 Producing BHP 142.8 psi (g)
 Static BHP - * - psi (g)

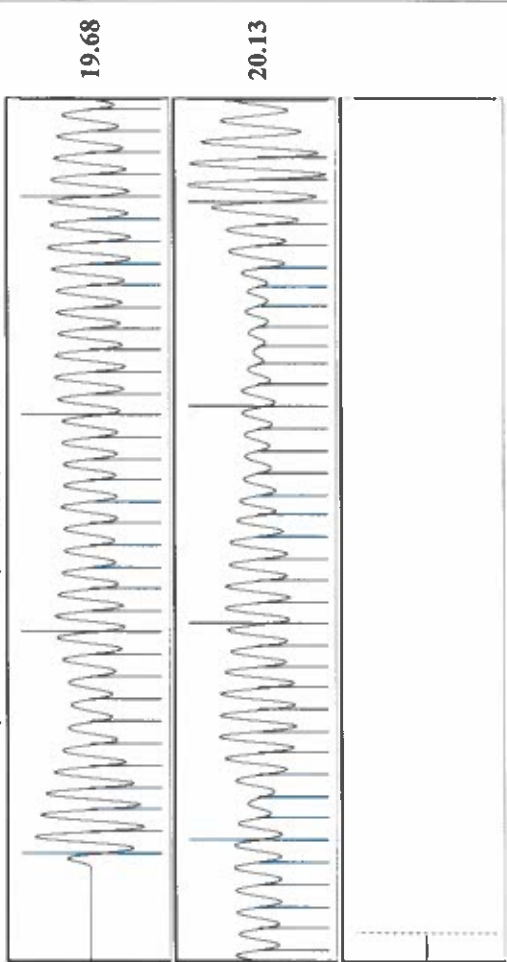
Production Current Potential
 Oil - * - BBL/D
 Water - * - BBL/D
 Gas - * - Mscf/D
 IPR Method Vogel
 PBHP/SBHP - * -
 Production Efficiency 0.0
 Oil 40 deg-API
 Water 1.05 Sp.Gr.H2O
 Gas 0.74 Sp.Gr.AIR
 Acoustic Velocity 1262.39 ft/s
 Formation Submergence
 Total Gaseous Liquid Column HT (TVD) 35 ft
 Equivalent Gas Free Liquid HT (TVD) 35 ft
 2/12/23B

Group: TAD Well: Dyck A-1 (acquired on: 02/12/23 11:46:25)



Change in Pressure -0.12 psi PT 18865 Range
 Change in Time 4.00 min

Group: TAD Well: Dyck A-1 (acquired on: 02/12/23 11:46:25)



Acoustic Velocity 1262.39 ft/s Joints counted 72
 Joints Per Second 19.9115 Jts/sec Joints to liquid level 80.9801
 Depth to liquid level 2567.07 ft Filter Width 17.6078
 Automatic Collar Count Yes Time to 1st Collar 3.864

February 16, 2023

Katherine McClurkan
Merit Energy Company, LLC
13727 NOEL ROAD, SUITE 1200
DALLAS, TX 75240-7362

Re: Temporary Abandonment
API 15-067-20110-00-02
Dyck A 1
SW/4 Sec.23-28S-37W
Grant County, Kansas

Dear Katherine McClurkan:

"Your temporary abandonment (TA) application for the well listed above has been approved. In accordance with K.A.R. 82-3-111 the TA status of this well will expire 02/16/2024.

- * If you return this well to service or plug it, please notify the District Office.
- * If you sell this well you are required to file a Transfer of Operator form, T-1.
- * If the well will remain temporarily abandoned, you must submit a new TA application, CP-111, before 02/16/2024.

You may contact me at the number above if you have questions.

Very truly yours,

Michael Maier"