

KANSAS CORPORATION COMMISSION
OIL & GAS CONSERVATION DIVISION

TEMPORARY ABANDONMENT WELL APPLICATION

OPERATOR: License#
Name:
Address 1:
Address 2:
City: State: Zip:
Contact Person:
Phone:
Contact Person Email:
Field Contact Person:
Field Contact Person Phone:

API No. 15-
Spot Description:
Sec. Twp. S. R.
GPS Location: Lat: Long:
Datum: NAD27 NAD83 WGS84
County: Elevation:
Lease Name: Well #:
Well Type: Oil Gas OG WSW Other:
SWD Permit #: ENHR Permit #:
Gas Storage Permit #:
Spud Date: Date Shut-In:

Table with 7 columns: Conductor, Surface, Production, Intermediate, Liner, Tubing. Rows include Size, Setting Depth, Amount of Cement, Top of Cement, Bottom of Cement.

Casing Fluid Level from Surface: How Determined? Date:
Casing Squeeze(s): to w / sacks of cement, to w / sacks of cement. Date:
Do you have a valid Oil & Gas Lease? Yes No
Depth and Type: Junk in Hole at Tools in Hole at Casing Leaks: Yes No Depth of casing leak(s):
Type Completion: ALT. I ALT. II Depth of: DV Tool: w / sacks of cement Port Collar: w / sack of cement
Packer Type: Size: Inch Set at: Feet
Total Depth: Plug Back Depth: Plug Back Method:

Geological Data:

Table with 4 columns: Formation Name, Formation Top, Formation Base, Completion Information. Rows 1 and 2.

UNDER PENALTY OF PERJURY I HEREBY ATTEST THAT THE INFORMATION CONTAINED HEREIN IS TRUE AND CORRECT TO THE BEST OF MY KNOWLEDGE

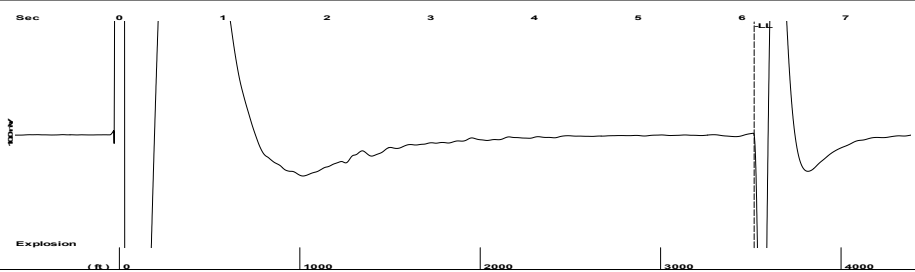
Submitted Electronically

Do NOT Write in This Space - KCC USE ONLY
Date Tested: Results: Date Plugged: Date Repaired: Date Put Back in Service:
Review Completed by: Comments:
TA Approved: Yes Denied Date:

Mail to the Appropriate KCC Conservation Office:

Table with 2 columns: Office Address, Phone. Rows for District Office #1, #2, #3, #4.

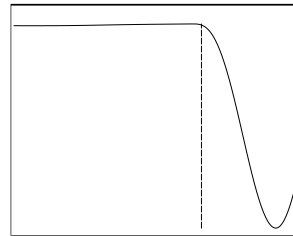
Group: Kansas Well: Danis #1-21WIW (acquired on: 02/09/23 10:13:20)



Time 6.119 sec
 Joints 110.991 Jts
 Depth 3518.42 ft

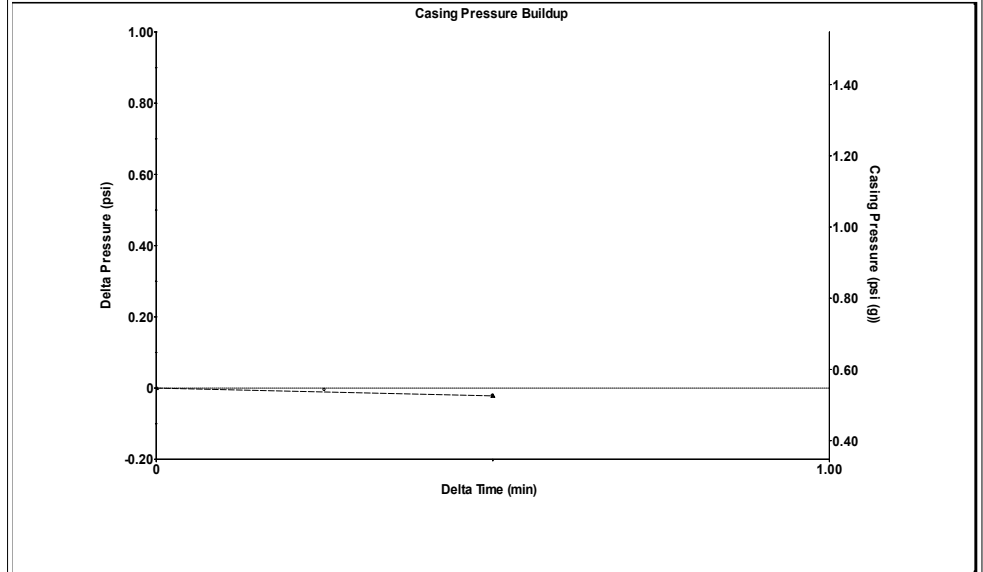
Liquid level calculated with user supplied Acoustic Velocity

Acoustic Velocity 1150 ft/s



Analysis Method: Acoustic Velocity

Group: Kansas Well: Danis #1-21WIW (acquired on: 02/09/23 10:13:20)



Change in Pressure -0.02 psi PT 18318
 Change in Time 0.50 min Range 0 - ? psi

Group: Kansas Well: Danis #1-21WIW (acquired on: 02/09/23 10:13:20)

Production Current	Potential	Casing Pressure	Producing
Oil - * -	- * - BBL/D	0.5 psi (g)	
Water - * -	- * - BBL/D	Casing Pressure Buildup	Annular Gas Flow
Gas - * -	- * - Mscf/D	-0.022 psi	- * - Mscf/D
		0.50 min	% Liquid
IPR Method	Vogel	Gas/Liquid Interface Pressure	100 %
PBHP/SBHP	- * -	2.2 psi (g)	
Production Efficiency	0.0		
Oil 40 deg.API		Liquid Level Depth	
Water 1.05 Sp.Gr.H2O		3518.42 ft	
Gas 0.85 Sp.Gr.AIR		Tubing Intake Depth	
		- * - ft	
Acoustic Velocity 1150 ft/s		Formation Depth	
		4229.00 ft	
Formation Submergence			Tubing Intake
Total Gaseous Liquid Column HT (TVD)	711 ft		- * - psi (g)
Equivalent Gas Free Liquid HT (TVD)	711 ft		Producing BHP
			325.2 psi (g)
Acoustic Test			Static BHP
			- * - psi (g)



Group: Kansas Well: Danis #1-21WIW (acquired on: 02/09/23 10:13:20)

Entered Acoustic Velocity for Liquid Level depth determination

February 23, 2023

Jeff Scarbrough
Shakespeare Oil Co., Inc.
202 W MAIN ST
SALEM, IL 62881-1519

Re: Temporary Abandonment
API 15-101-22372-00-01
DANIS 1-21
SE/4 Sec.21-18S-29W
Lane County, Kansas

Dear Jeff Scarbrough:

"Your temporary abandonment (TA) application for the well listed above has been approved. In accordance with K.A.R. 82-3-111 the TA status of this well will expire 02/23/2024.

- * If you return this well to service or plug it, please notify the District Office.
- * If you sell this well you are required to file a Transfer of Operator form, T-1.
- * If the well will remain temporarily abandoned, you must submit a new TA application, CP-111, before 02/23/2024.

You may contact me at the number above if you have questions.

Very truly yours,

Michael Maier"