

KANSAS CORPORATION COMMISSION
OIL & GAS CONSERVATION DIVISION

Form must be Typed
Form must be signed

TEMPORARY ABANDONMENT WELL APPLICATION

All blanks must be complete

OPERATOR: License#
Name:
Address 1:
Address 2:
City: State: Zip:
Contact Person:
Phone:
Contact Person Email:
Field Contact Person:
Field Contact Person Phone:

API No. 15-
Spot Description:
Sec. Twp. S. R.
feet from N / S Line of Section
feet from E / W Line of Section
GPS Location: Lat: , Long:
Datum: NAD27 NAD83 WGS84
County: Elevation: GL KB
Lease Name: Well #:
Well Type: Oil Gas OG WSW Other:
SWD Permit #: ENHR Permit #:
Gas Storage Permit #:
Spud Date: Date Shut-In:

Table with 7 columns: Conductor, Surface, Production, Intermediate, Liner, Tubing. Rows include Size, Setting Depth, Amount of Cement, Top of Cement, Bottom of Cement.

Casing Fluid Level from Surface: How Determined? Date:
Casing Squeeze(s): to w / sacks of cement, to w / sacks of cement. Date:
Do you have a valid Oil & Gas Lease? Yes No
Depth and Type: Junk in Hole at Tools in Hole at Casing Leaks: Yes No Depth of casing leak(s):
Type Completion: ALT. I ALT. II Depth of: DV Tool: w / sacks of cement Port Collar: w / sack of cement
Packer Type: Size: Inch Set at: Feet
Total Depth: Plug Back Depth: Plug Back Method:

Geological Data:

Table with 4 columns: Formation Name, Formation Top, Formation Base, Completion Information. Rows 1 and 2.

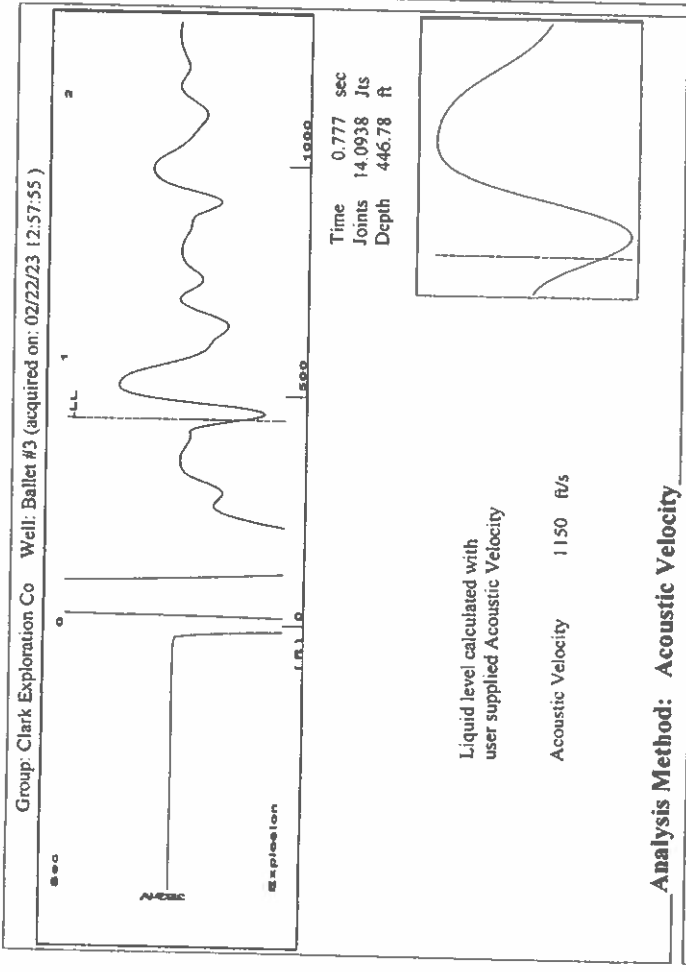
UNDER PENALTY OF PERJURY I HEREBY ATTEST THAT THE INFORMATION CONTAINED HEREIN IS TRUE AND CORRECT TO THE BEST OF MY KNOWLEDGE

Submitted Electronically

Do NOT Write in This Space - KCC USE ONLY
Date Tested: Results: Date Plugged: Date Repaired: Date Put Back in Service:
Review Completed by: Comments:
TA Approved: Yes Denied Date:

Mail to the Appropriate KCC Conservation Office:

Map of Kansas with 4 numbered districts. Table with 2 columns: Office Address, Phone Number. Rows 1-4.

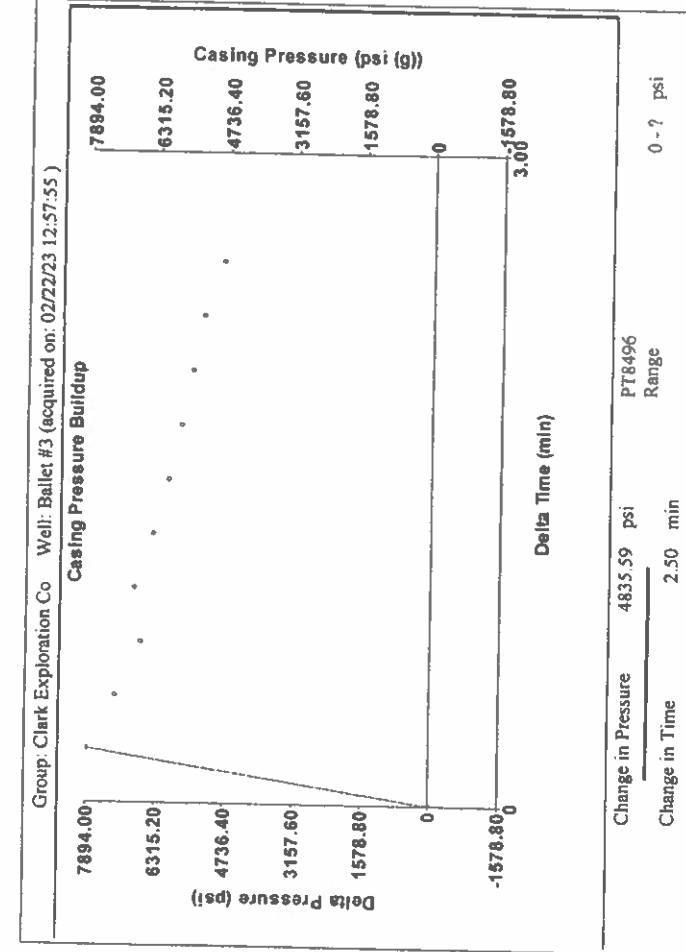


### Analysis Method: Acoustic Velocity

Group: Clark Exploration Co Well: Ballet #3 (acquired on: 02/22/23 12:57:55)

Production Current	Potential	Casing Pressure	Static
Oil -.-	-.- BBL/D	0.1 psi (g)	Oil Column Height
Water -.-	-.- BBL/D	4835.6 psi	MD 0 ft
Gas -.-	-.- Mscf/D	2.50 min	Water Column Height
			MD -.- ft
IPR Method	Vogel	Gas/Liquid Interface Pressure	Static BHP
PBHP/SBHP	-.-	-.- psi (g)	-.- psi (g)
Production Efficiency	0.0		
Oil 40 deg-API			
Water 1.05 Sp.Gr:H2O			
Gas 0.85 Sp.Gr:AIR			
Acoustic Velocity 1150 ft/s			
		Liquid Level Depth	
		446.78 ft	
		Pump Intake Depth	
		5000.00 ft	
		Formation Depth	
		5000.00 ft	

Acoustic Test



### Entered Acoustic Velocity for Liquid Level depth determination

Group: Clark Exploration Co Well: Ballet #3 (acquired on: 02/22/23 12:57:55)

February 23, 2023

Curtis Clark  
Clark, Curtis dba Clark Exploration Co.  
120 S CLERMONT ST  
DENVER, CO 80246-1037

Re: Temporary Abandonment  
API 15-007-30272-00-00  
BALLET 3  
SW/4 Sec.05-35S-15W  
Barber County, Kansas

Dear Curtis Clark:

"Your temporary abandonment (TA) application for the well listed above has been approved. In accordance with K.A.R. 82-3-111 the TA status of this well will expire 02/23/2024.

- \* If you return this well to service or plug it, please notify the District Office.
- \* If you sell this well you are required to file a Transfer of Operator form, T-1.
- \* If the well will remain temporarily abandoned, you must submit a new TA application, CP-111, before 02/23/2024.

You may contact me at the number above if you have questions.

Very truly yours,

Michael Maier"