

KANSAS CORPORATION COMMISSION
OIL & GAS CONSERVATION DIVISION

TEMPORARY ABANDONMENT WELL APPLICATION

OPERATOR: License#
Name:
Address 1:
Address 2:
City: State: Zip:
Contact Person:
Phone:
Contact Person Email:
Field Contact Person:
Field Contact Person Phone:

API No. 15-
Spot Description:
Sec. Twp. S. R.
feet from N / S Line of Section
feet from E / W Line of Section
GPS Location: Lat: , Long:
Datum: NAD27 NAD83 WGS84
County: Elevation: GL KB
Lease Name: Well #:
Well Type: Oil Gas OG WSW Other:
SWD Permit #: ENHR Permit #:
Gas Storage Permit #:
Spud Date: Date Shut-In:

Table with 7 columns: Conductor, Surface, Production, Intermediate, Liner, Tubing. Rows include Size, Setting Depth, Amount of Cement, Top of Cement, Bottom of Cement.

Casing Fluid Level from Surface: How Determined? Date:
Casing Squeeze(s): to w / sacks of cement, to w / sacks of cement. Date:
Do you have a valid Oil & Gas Lease? Yes No
Depth and Type: Junk in Hole at Tools in Hole at Casing Leaks: Yes No Depth of casing leak(s):
Type Completion: ALT. I ALT. II Depth of: DV Tool: w / sacks of cement Port Collar: w / sack of cement
Packer Type: Size: Inch Set at: Feet
Total Depth: Plug Back Depth: Plug Back Method:

Geological Data:

Table with 4 columns: Formation Name, Formation Top, Formation Base, Completion Information. Rows 1 and 2.

UNDER PENALTY OF PERJURY I HEREBY ATTEST THAT THE INFORMATION CONTAINED HEREIN IS TRUE AND CORRECT TO THE BEST OF MY KNOWLEDGE

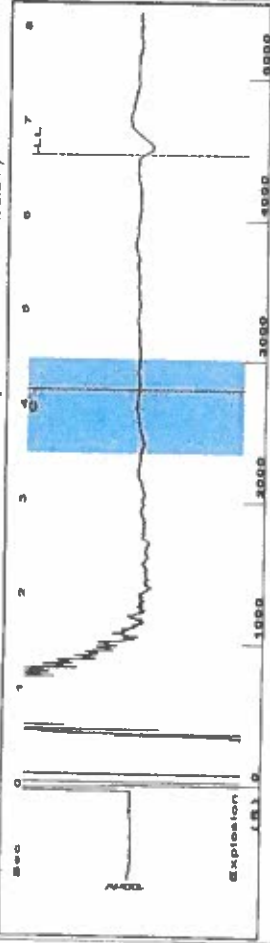
Submitted Electronically

Do NOT Write in This Space - KCC USE ONLY
Date Tested: Results: Date Plugged: Date Repaired: Date Put Back in Service:
Review Completed by: Comments:
TA Approved: Yes Denied Date:

Mail to the Appropriate KCC Conservation Office:

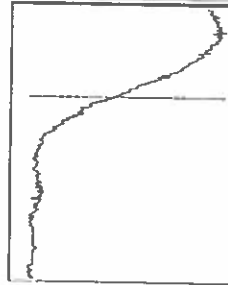
Map of Kansas with 4 numbered districts and corresponding office addresses and phone numbers.

Group: Clark Exploration Co Well: Ballet #7 (acquired on: 02/22/23 14:32:24)



Filter Type High Pass Automatic Collar Count Yes
 Manual Acoustic Velo 1260.44 ft/s Manual JTS/sec 19.8807
 Time 6.65 sec
 Joints 140.832 Jts
 Depth 4464.36 ft

[3.5 to 4.5 (Sec)]



Analysis Method: Automatic

Group: Clark Exploration Co Well: Ballet #7 (acquired on: 02/22/23 14:32:24)

Production Current	Potential	Static
Oil -.- BBL/D	Casing Pressure 73.3 psi (g)	Oil Column Height MD 0 ft
Water -.- BBL/D	Casing Pressure Buildup -.- psi	Water Column Height MD -.- ft
Gas -.- Msc/D	Gas/Liquid Interface Pressure -.- psi (g)	Static BHP -.- psi (g)
IPR Method Vogel	Liquid Level Depth 4464.36 ft	
PBHP/SBHP -.-	Pump Intake Depth 5000.00 ft	
Production Efficiency 0.0	Formation Depth 5000.00 ft	
Oil 40 deg API		
Water 1.05 Sp.Gr.H2O		
Gas 0.66 Sp.Gr.AIR		
Acoustic Velocity 1342.67 ft/s		

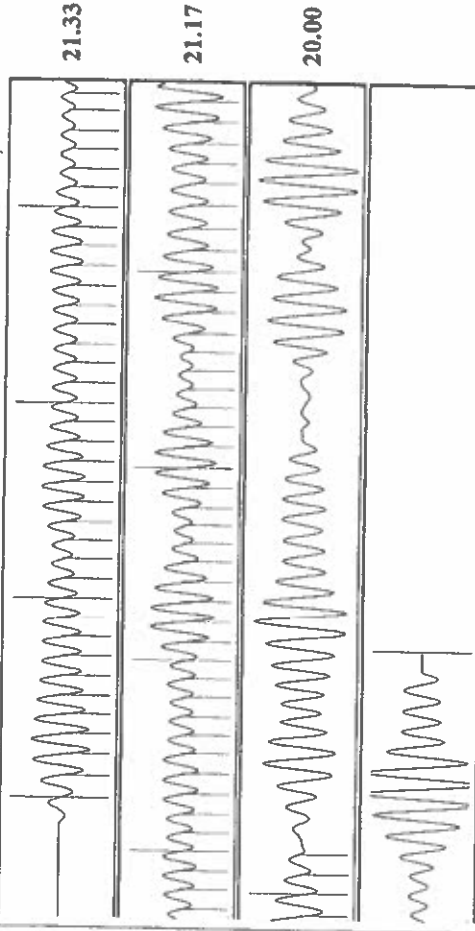
Acoustic Test

Group: Clark Exploration Co Well: Ballet #7 (acquired on: 02/22/23 14:32:24)

NO PRESSURE DATA AVAILABLE

Change in Pressure 0.00 psi PT8496 Range
 Change in Time 0.00 min

Group: Clark Exploration Co Well: Ballet #7 (acquired on: 02/22/23 14:32:24)



Acoustic Velocity	1342.67 ft/s	Joints counted	82
Joints Per Second	21.1777 jts/sec	Joints to liquid level	140.832
Depth to liquid level	4464.36 ft	Filter Width	17.8807
Automatic Collar Count	Yes	Time to 1st Collar	0.288
			4.16

February 23, 2023

Curtis Clark
Clark, Curtis dba Clark Exploration Co.
120 S CLERMONT ST
DENVER, CO 80246-1037

Re: Temporary Abandonment
API 15-033-20001-00-00
BALLET RANCH 7
E/2 Sec.01-35S-16W
Comanche County, Kansas

Dear Curtis Clark:

"Your temporary abandonment (TA) application for the well listed above has been approved. In accordance with K.A.R. 82-3-111 the TA status of this well will expire 02/23/2024.

- * If you return this well to service or plug it, please notify the District Office.
- * If you sell this well you are required to file a Transfer of Operator form, T-1.
- * If the well will remain temporarily abandoned, you must submit a new TA application, CP-111, before 02/23/2024.

You may contact me at the number above if you have questions.

Very truly yours,

Michael Maier"