

KANSAS CORPORATION COMMISSION
OIL & GAS CONSERVATION DIVISION

TEMPORARY ABANDONMENT WELL APPLICATION

OPERATOR: License#
Name:
Address 1:
Address 2:
City: State: Zip:
Contact Person:
Phone:
Contact Person Email:
Field Contact Person:
Field Contact Person Phone:

API No. 15-
Spot Description:
Sec. Twp. S. R.
GPS Location: Lat, Long
Datum: NAD27, NAD83, WGS84
County: Elevation:
Lease Name: Well #:
Well Type: Oil, Gas, OG, WSW, Other
SWD Permit #: ENHR Permit #:
Gas Storage Permit #:
Spud Date: Date Shut-In:

Table with 7 columns: Conductor, Surface, Production, Intermediate, Liner, Tubing. Rows include Size, Setting Depth, Amount of Cement, Top of Cement, Bottom of Cement.

Casing Fluid Level from Surface: How Determined? Date:
Casing Squeeze(s): to w / sacks of cement, to w / sacks of cement. Date:
Do you have a valid Oil & Gas Lease? Yes No
Depth and Type: Junk in Hole at Tools in Hole at Casing Leaks: Yes No Depth of casing leak(s):
Type Completion: ALT. I ALT. II Depth of: DV Tool: w / sacks of cement Port Collar: w / sack of cement
Packer Type: Size: Inch Set at: Feet
Total Depth: Plug Back Depth: Plug Back Method:

Geological Data:

Table with 4 columns: Formation Name, Formation Top, Formation Base, Completion Information. Rows 1 and 2.

UNDER PENALTY OF PERJURY I HEREBY ATTEST THAT THE INFORMATION CONTAINED HEREIN IS TRUE AND CORRECT TO THE BEST OF MY KNOWLEDGE

Submitted Electronically

Form with fields: Do NOT Write in This Space - KCC USE ONLY, Date Tested, Results, Date Plugged, Date Repaired, Date Put Back in Service, Review Completed by, Comments, TA Approved: Yes Denied, Date.

Mail to the Appropriate KCC Conservation Office:

Table with 2 columns: Office Address, Phone. Rows for KCC District Office #1, #2, #3, #4.

## Liquid Level

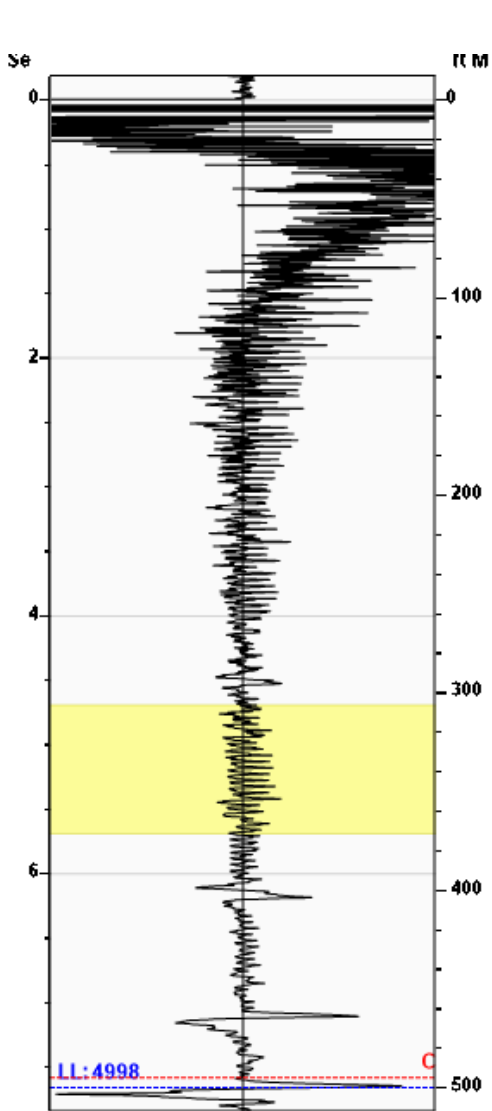
4998 ft MD

Fluid Above Pump

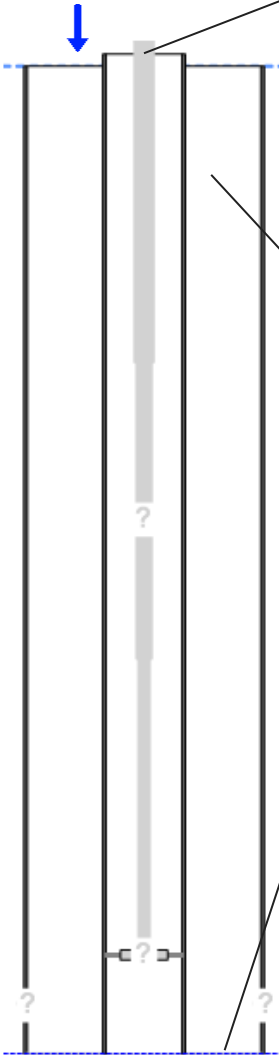
.\* ft TVD

Equivalent Gas Free Above Pump

.\* ft TVD



Gun - WG 3243



### Production

Date Entered	02/21/23		
Oil	Current	Potential	BBL/D
Water	.*	.*	BBL/D
Gas	.*	.*	Mscf/D
IPR Method	Vogel		
PBHP/SBHP	1.00		
Producing Efficiency	0.00%		

### Casing Pressure

Pressure	682.6 psi (g)
----------	---------------

### Annular Gas Flow

Gas Flow	.* Mscf/D
----------	-----------

### Fluid Properties

% Liquid Above Pump	100.00%
% Liquid Below Pump	.*

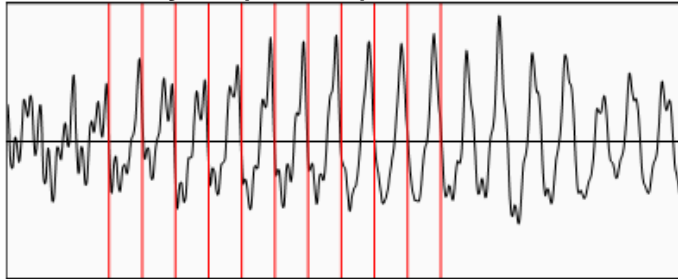
### Depths

Pump Intake Depth	5000 ft
Formation Depth	0 ft

### Wellbore Pressures

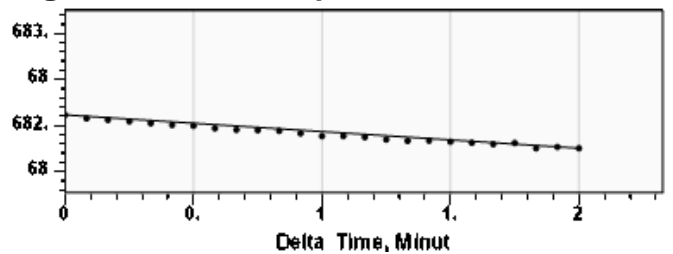
PIP	.*
PBHP	.*
SBHP	.*
Gas/Liq Interface	.*

### Collar Analysis (Manual)



Average Acoustic Velocity	1306 ft/s
Average Joints Per Sec.	20.59 Jts/sec
Joints To Liquid	157.68 Jts

### Casing Pressure Buildup



Casing Pressure	682.6 psi (g)
Buildup	-0.4 psi (g)
Buildup Time	2 min 0 sec
Gas Gravity from Collar Analysis (Manual)	0.6335 Air = 1

### Comments and Recommendations

Echometer Company  
 5001 Ditto Lane  
 Wichita Falls, TX 76302  
 (940) 767-4334  
 info@echometer.com

March 01, 2023

Douglas H McGinness II  
CMX, Inc.  
9330 E CENTRAL SUITE 300  
WICHITA, KS 67206-6610

Re: Temporary Abandonment  
API 15-007-20433-00-00  
BLUNK 1  
SW/4 Sec.05-34S-13W  
Barber County, Kansas

Dear Douglas H McGinness II:

"Your temporary abandonment (TA) application for the well listed above has been approved. In accordance with K.A.R. 82-3-111 the TA status of this well will expire 03/01/2024.

- \* If you return this well to service or plug it, please notify the District Office.
- \* If you sell this well you are required to file a Transfer of Operator form, T-1.
- \* If the well will remain temporarily abandoned, you must submit a new TA application, CP-111, before 03/01/2024.

You may contact me at the number above if you have questions.

Very truly yours,

Michael Maier"