

KANSAS CORPORATION COMMISSION  
OIL & GAS CONSERVATION DIVISION

TEMPORARY ABANDONMENT WELL APPLICATION

All blanks must be complete

OPERATOR: License# \_\_\_\_\_  
 Name: \_\_\_\_\_  
 Address 1: \_\_\_\_\_  
 Address 2: \_\_\_\_\_  
 City: \_\_\_\_\_ State: \_\_\_\_\_ Zip: \_\_\_\_\_ + \_\_\_\_\_  
 Contact Person: \_\_\_\_\_  
 Phone: ( \_\_\_\_\_ ) \_\_\_\_\_  
 Contact Person Email: \_\_\_\_\_  
 Field Contact Person: \_\_\_\_\_  
 Field Contact Person Phone: ( \_\_\_\_\_ ) \_\_\_\_\_

API No. 15- \_\_\_\_\_  
 Spot Description: \_\_\_\_\_  
 \_\_\_\_\_ - \_\_\_\_\_ - \_\_\_\_\_ - \_\_\_\_\_ Sec. \_\_\_\_\_ Twp. \_\_\_\_\_ S. R. \_\_\_\_\_  E  W  
 \_\_\_\_\_ feet from  N /  S Line of Section  
 \_\_\_\_\_ feet from  E /  W Line of Section  
 GPS Location: Lat: \_\_\_\_\_, Long: \_\_\_\_\_  
(e.g. xx.xxxxx) (e.g. -xxx.xxxxx)  
 Datum:  NAD27  NAD83  WGS84  
 County: \_\_\_\_\_ Elevation: \_\_\_\_\_  GL  KB  
 Lease Name: \_\_\_\_\_ Well #: \_\_\_\_\_  
 Well Type: (check one)  Oil  Gas  OG  WSW  Other: \_\_\_\_\_  
 SWD Permit #: \_\_\_\_\_  ENHR Permit #: \_\_\_\_\_  
 Gas Storage Permit #: \_\_\_\_\_  
 Spud Date: \_\_\_\_\_ Date Shut-In: \_\_\_\_\_

	Conductor	Surface	Production	Intermediate	Liner	Tubing
Size						
Setting Depth						
Amount of Cement						
Top of Cement						
Bottom of Cement						

Casing Fluid Level from Surface: \_\_\_\_\_ How Determined? \_\_\_\_\_ Date: \_\_\_\_\_  
 Casing Squeeze(s): \_\_\_\_\_ to \_\_\_\_\_ w / \_\_\_\_\_ sacks of cement, \_\_\_\_\_ to \_\_\_\_\_ w / \_\_\_\_\_ sacks of cement. Date: \_\_\_\_\_  
(top) (bottom) (top) (bottom)  
 Do you have a valid Oil & Gas Lease?  Yes  No  
 Depth and Type:  Junk in Hole at \_\_\_\_\_  Tools in Hole at \_\_\_\_\_ Casing Leaks:  Yes  No Depth of casing leak(s): \_\_\_\_\_  
(depth) (depth)  
 Type Completion:  ALT. I  ALT. II Depth of:  DV Tool: \_\_\_\_\_ w / \_\_\_\_\_ sacks of cement  Port Collar: \_\_\_\_\_ w / \_\_\_\_\_ sack of cement  
(depth) (depth)  
 Packer Type: \_\_\_\_\_ Size: \_\_\_\_\_ Inch Set at: \_\_\_\_\_ Feet  
 Total Depth: \_\_\_\_\_ Plug Back Depth: \_\_\_\_\_ Plug Back Method: \_\_\_\_\_

**Geological Data:**

Formation Name	Formation Top	Formation Base	Completion Information
1. _____	At: _____	to _____ Feet	Perforation Interval _____ to _____ Feet or Open Hole Interval _____ to _____ Feet
2. _____	At: _____	to _____ Feet	Perforation Interval _____ to _____ Feet or Open Hole Interval _____ to _____ Feet

UNDER PENALTY OF PERJURY I HEREBY ATTEST THAT THE INFORMATION CONTAINED HEREIN IS TRUE AND CORRECT TO THE BEST OF MY KNOWLEDGE

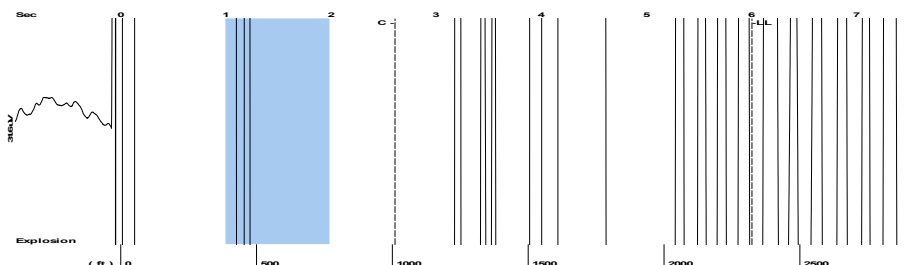
Submitted Electronically

<b>Do NOT Write in This Space - KCC USE ONLY</b>	Date Tested: _____	Results: _____	Date Plugged: _____	Date Repaired: _____	Date Put Back in Service: _____
	Review Completed by: _____ Comments: _____				
TA Approved: <input type="checkbox"/> Yes <input type="checkbox"/> Denied Date: _____					

Mail to the Appropriate KCC Conservation Office:

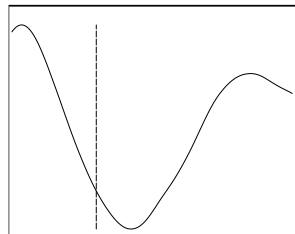
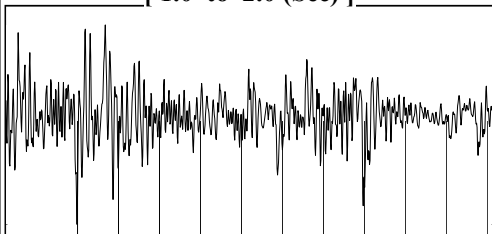
	KCC District Office #1 - 210 E. Frontview, Suite A, Dodge City, KS 67801	Phone 620.682.7933
	KCC District Office #2 - 3450 N. Rock Road, Building 600, Suite 601, Wichita, KS 67226	Phone 316.337.7400
	KCC District Office #3 - 137 E. 21st St., Chanute, KS 66720	Phone 620.902.6450
	KCC District Office #4 - 2301 E. 13th Street, Hays, KS 67601-2651	Phone 785.261.6250

Group: MyWells Well: FREEMAN # 1-19 (acquired on: 03/03/23 15:03:33 )



Filter Type High Pass Automatic Collar Count Yes Time 6.003 sec  
 Manual Acoustic Veloc 752.969 ft/s Manual JTS/sec 11.8765 Joints 73.2924 Jts  
 Depth 2323.37 ft

[ 1.0 to 2.0 (Sec) ]



**Analysis Method: Automatic**

Group: MyWells Well: FREEMAN # 1-19 (acquired on: 03/03/23 15:03:33 )

NO PRESSURE DATA AVAILABLE

Change in Pressure 0.00 psi PT16027  
 Range 0 - ? psi  
 Change in Time 0.00 min

Group: MyWells Well: FREEMAN # 1-19 (acquired on: 03/03/23 15:03:33 )

<b>Production</b>		<b>Potential</b>		<b>Casing Pressure</b>	
Oil	- * -	- * -	BBL/D	38.3	psi (g)
Water	- * -	- * -	BBL/D		Casing Pressure Buildup
Gas	- * -	- * -	Mscf/D	- * -	psi
				- * -	min
					Gas/Liquid Interface Pressure
				- * -	psi (g)
<b>IPR Method</b>		<b>Vogel</b>		<b>Liquid Level Depth</b>	
PBHP/SBHP	- * -	- * -		2323.37	ft
Production Efficiency	0.0				<b>Pump Intake Depth</b>
				- * -	ft
Oil	40	deg.API			<b>Formation Depth</b>
Water	1.05	Sp.Gr.H2O		2965.00	ft
Gas	1.18	Sp.Gr.AIR			
<b>Acoustic Velocity</b>		774.07 ft/s			
<b>Formation Submergence</b>					
<b>Total Gaseous Liquid Column HT (TVD)</b>				- * - ft	
<b>Equivalent Gas Free Liquid HT (TVD)</b>				- * - ft	

**Producing**

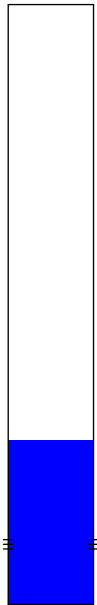
Annular Gas Flow - \* - Mscf/D

% Liquid 100 %

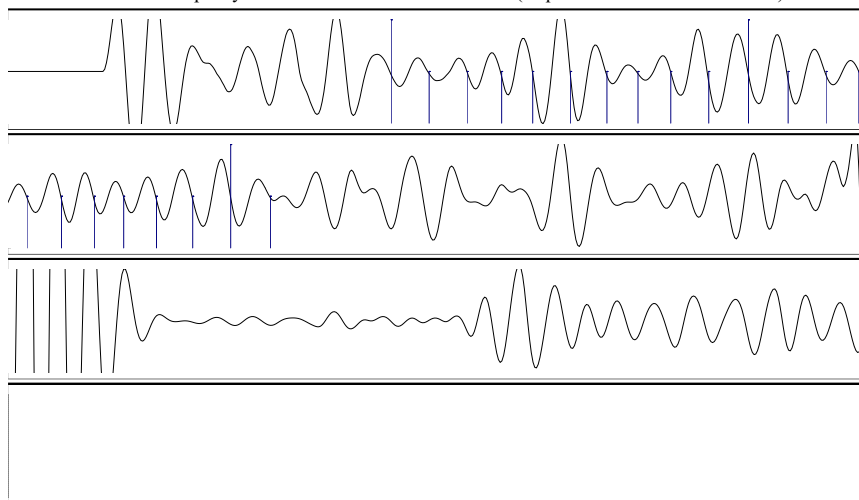
**Pump Intake** - \* - psi (g)

**Producing BHP** - \* - psi (g)

**Static BHP** - \* - psi (g)



Group: MyWells Well: FREEMAN # 1-19 (acquired on: 03/03/23 15:03:33 )



11.99

12.58

Acoustic Velocity	774.07 ft/s	Joints counted	21
Joints Per Second	12.2093 jts/sec	Joints to liquid level	73.2924
Depth to liquid level	2323.37 ft	Filter Width	9.87648 13.8765
Automatic Collar Count	Yes	Time to 1st Collar	0.888 2.608

Conservation Division  
District Office No. 1  
210 E. Frontview, Suite A  
Dodge City, KS 67801



Phone: 620-682-7933  
<http://kcc.ks.gov/>

Susan K. Duffy, Chair  
Dwight D. Keen, Commissioner  
Andrew J. French, Commissioner

Laura Kelly, Governor

March 08, 2023

Octavio Morales  
American Warrior, Inc.  
PO BOX 399  
GARDEN CITY, KS 67846-0399

Re: Temporary Abandonment  
API 15-055-20349-00-00  
FREEMAN 1-19  
SW/4 Sec.19-24S-32W  
Finney County, Kansas

Dear Octavio Morales:

"Your temporary abandonment (TA) application for the well listed above has been approved. In accordance with K.A.R. 82-3-111 the TA status of this well will expire 03/08/2024.

- \* If you return this well to service or plug it, please notify the District Office.
- \* If you sell this well you are required to file a Transfer of Operator form, T-1.
- \* If the well will remain temporarily abandoned, you must submit a new TA application, CP-111, before 03/08/2024.

You may contact me at the number above if you have questions.

Very truly yours,

Michael Maier"