

KANSAS CORPORATION COMMISSION
OIL & GAS CONSERVATION DIVISION

TEMPORARY ABANDONMENT WELL APPLICATION

OPERATOR: License#
Name:
Address 1:
Address 2:
City: State: Zip:
Contact Person:
Phone:
Contact Person Email:
Field Contact Person:
Field Contact Person Phone:

API No. 15-
Spot Description:
Sec. Twp. S. R.
feet from N / S Line of Section
feet from E / W Line of Section
GPS Location: Lat: , Long:
Datum: NAD27 NAD83 WGS84
County: Elevation: GL KB
Lease Name: Well #:
Well Type: Oil Gas OG WSW Other:
SWD Permit #: ENHR Permit #:
Gas Storage Permit #:
Spud Date: Date Shut-In:

Table with 7 columns: Conductor, Surface, Production, Intermediate, Liner, Tubing. Rows include Size, Setting Depth, Amount of Cement, Top of Cement, Bottom of Cement.

Casing Fluid Level from Surface: How Determined? Date:
Casing Squeeze(s): to w / sacks of cement, to w / sacks of cement. Date:
Do you have a valid Oil & Gas Lease? Yes No
Depth and Type: Junk in Hole at Tools in Hole at Casing Leaks: Yes No Depth of casing leak(s):
Type Completion: ALT. I ALT. II Depth of: DV Tool: w / sacks of cement Port Collar: w / sack of cement
Packer Type: Size: Inch Set at: Feet
Total Depth: Plug Back Depth: Plug Back Method:

Geological Data:

Table with 4 columns: Formation Name, Formation Top, Formation Base, Completion Information. Rows 1 and 2.

UNDER PENALTY OF PERJURY I HEREBY ATTEST THAT THE INFORMATION CONTAINED HEREIN IS TRUE AND CORRECT TO THE BEST OF MY KNOWLEDGE

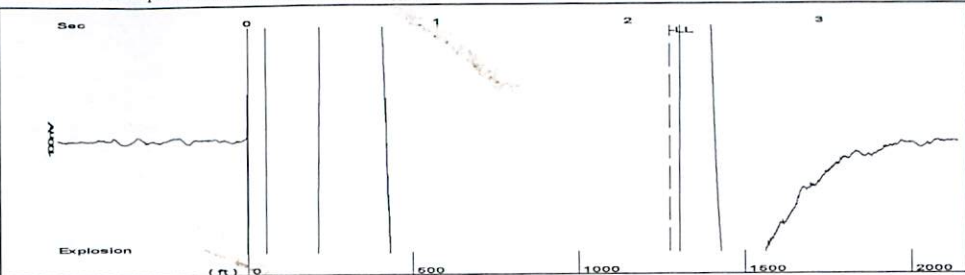
Submitted Electronically

Do NOT Write in This Space - KCC USE ONLY
Date Tested: Results: Date Plugged: Date Repaired: Date Put Back in Service:
Review Completed by: Comments:
TA Approved: Yes Denied Date:

Mail to the Appropriate KCC Conservation Office:

Table with 3 columns: District Office, Address, Phone. Rows for District Office #1, #2, #3, #4.

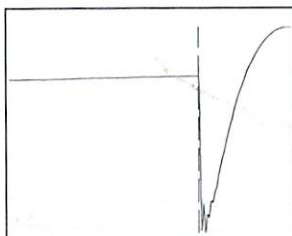
Group: Northern Kansas District Well: BEMIS A-8 (acquired on: 03/07/23 08:07:13)



Time 2.216 sec
 Joints 40.9053 Jts
 Depth 1274.20 ft

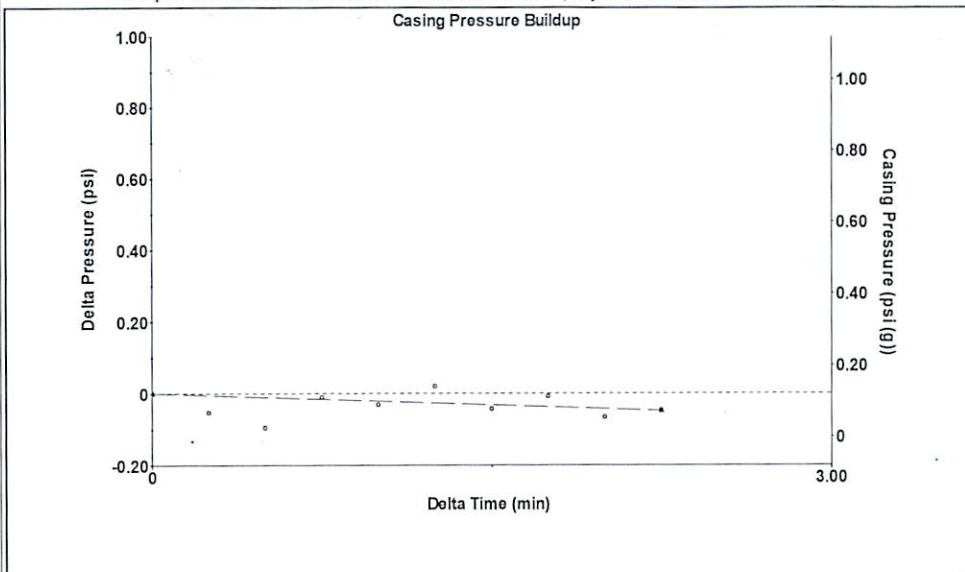
Liquid level calculated with user supplied Acoustic Velocity

Acoustic Velocity 1150 ft/s



Analysis Method: Acoustic Velocity

Group: Northern Kansas District Well: BEMIS A-8 (acquired on: 03/07/23 08:07:13)



Change in Pressure -0.05 psi PT 8139
 Change in Time 2.25 min Range 0 - ? psi

Group: Northern Kansas District Well: BEMIS A-8 (acquired on: 03/07/23 08:07:13)

Production		Potential
Current		
Oil 3.8	- *	BBL/D
Water 532.36	- *	BBL/D
Gas - * -	- *	Mscf/D
IPR Method		Vogel
PBHP/SBHP		- * -
Production Efficiency		0.0
Oil 40 deg.API		
Water 1.05 Sp.Gr.H2O		
Gas 0.85 Sp.Gr.AIR		
Acoustic Velocity	1150 ft/s	

Casing Pressure	0.1 psi (g)
Casing Pressure Buildup	-0.048 psi
	2.25 min
Gas/Liquid Interface Pressure	0.7 psi (g)
Liquid Level Depth	1274.20 ft
Pump Intake Depth	3430.00 ft
Formation Depth	3445.00 ft

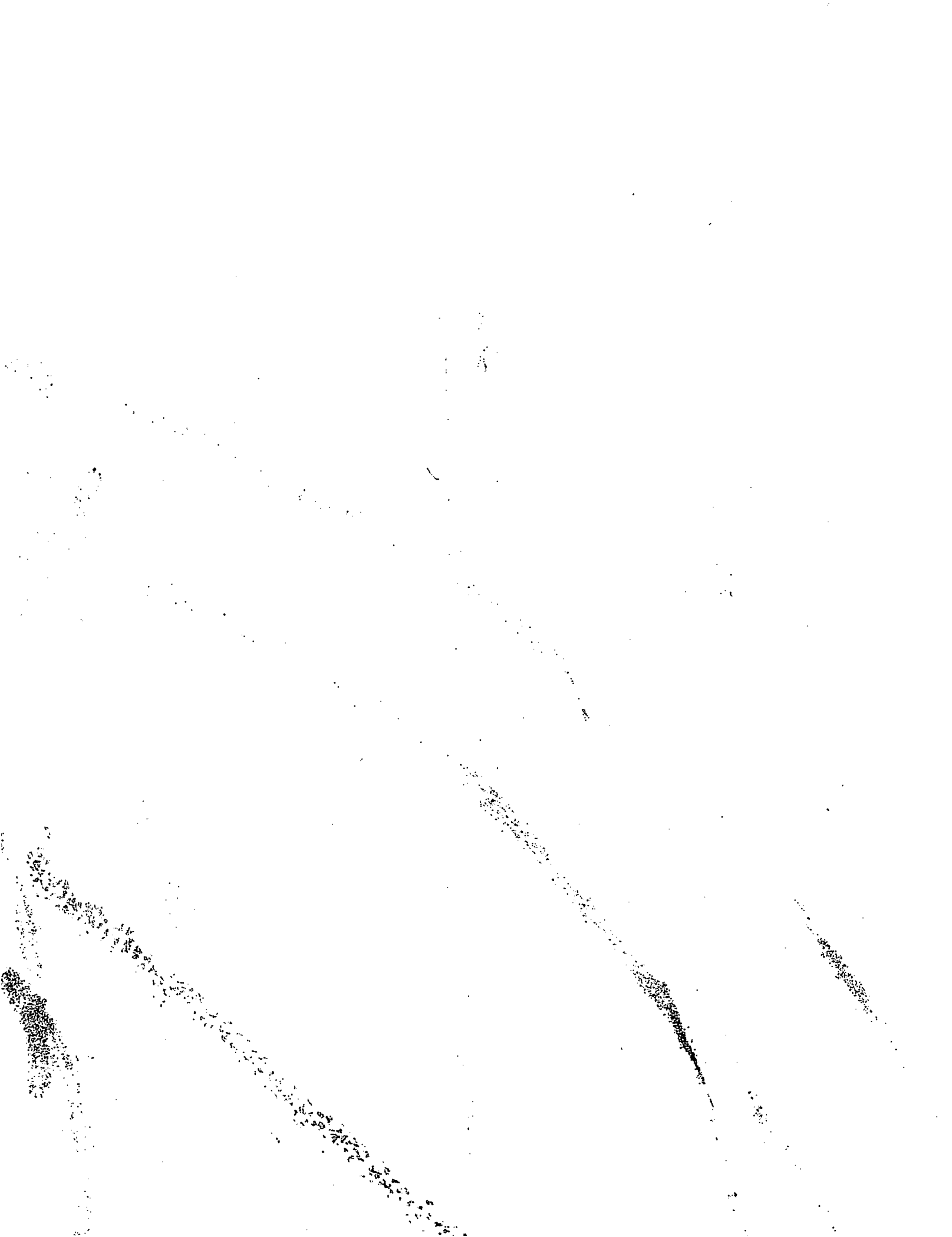


Static	
Oil Column Height	MD 15 ft
Water Column Height	MD 2155 ft
Static BHP	985.8 psi (g)

Static Fluid

Group: Northern Kansas District Well: BEMIS A-8 (acquired on: 03/07/23 08:07:13)

Entered Acoustic Velocity for Liquid Level depth determination



March 10, 2023

Jerry Wirtz
E & B Natural Resources Management Corp.
2501 280TH AVE
HAYS, KS 67601-9598

Re: Temporary Abandonment
API 15-051-05958-00-01
FA BEMIS A 8
NE/4 Sec.28-11S-17W
Ellis County, Kansas

Dear Jerry Wirtz:

"Your temporary abandonment (TA) application for the well listed above has been approved. In accordance with K.A.R. 82-3-111 the TA status of this well will expire 03/10/2024.

- * If you return this well to service or plug it, please notify the District Office.
- * If you sell this well you are required to file a Transfer of Operator form, T-1.
- * If the well will remain temporarily abandoned, you must submit a new TA application, CP-111, before 03/10/2024.

You may contact me at the number above if you have questions.

Very truly yours,

RICHARD WILLIAMS"