

KANSAS CORPORATION COMMISSION  
OIL & GAS CONSERVATION DIVISION

Form must be Typed

Form must be signed

All blanks must be complete

## TEMPORARY ABANDONMENT WELL APPLICATION

OPERATOR: License# \_\_\_\_\_

Name: \_\_\_\_\_

Address 1: \_\_\_\_\_

Address 2: \_\_\_\_\_

City: \_\_\_\_\_ State: \_\_\_\_\_ Zip: \_\_\_\_\_ + \_\_\_\_\_

Contact Person: \_\_\_\_\_

Phone: ( \_\_\_\_\_ ) \_\_\_\_\_

Contact Person Email: \_\_\_\_\_

Field Contact Person: \_\_\_\_\_

Field Contact Person Phone: ( \_\_\_\_\_ ) \_\_\_\_\_

API No. 15- \_\_\_\_\_

Spot Description: \_\_\_\_\_

\_\_\_\_ - \_\_\_\_ - \_\_\_\_ - \_\_\_\_ Sec. \_\_\_\_\_ Twp. \_\_\_\_\_ S. R. \_\_\_\_\_ ☐ E ☐ W\_\_\_\_\_ feet from ☐ N / ☐ S Line of Section\_\_\_\_\_ feet from ☐ E / ☐ W Line of Section

GPS Location: Lat: \_\_\_\_\_, Long: \_\_\_\_\_

(e.g. xx.xxxxx) (e.g. -xxx.xxxxx)

Datum: ☐ NAD27 ☐ NAD83 ☐ WGS84County: \_\_\_\_\_ Elevation: \_\_\_\_\_ ☐ GL ☐ KB

Lease Name: \_\_\_\_\_ Well #: \_\_\_\_\_

Well Type: (check one) ☐ Oil ☐ Gas ☐ OG ☐ WSW ☐ Other: \_\_\_\_\_☐ SWD Permit #: \_\_\_\_\_ ☐ ENHR Permit #: \_\_\_\_\_☐ Gas Storage Permit #: \_\_\_\_\_

Spud Date: \_\_\_\_\_ Date Shut-In: \_\_\_\_\_

	Conductor	Surface	Production	Intermediate	Liner	Tubing
Size						
Setting Depth						
Amount of Cement						
Top of Cement						
Bottom of Cement						

Casing Fluid Level from Surface: \_\_\_\_\_ How Determined? \_\_\_\_\_ Date: \_\_\_\_\_

Casing Squeeze(s): \_\_\_\_\_ to \_\_\_\_\_ w / \_\_\_\_\_ sacks of cement, \_\_\_\_\_ to \_\_\_\_\_ w / \_\_\_\_\_ sacks of cement. Date: \_\_\_\_\_  
(top) (bottom) (top) (bottom)Do you have a valid Oil & Gas Lease? ☐ Yes ☐ NoDepth and Type: ☐ Junk in Hole at \_\_\_\_\_ ☐ Tools in Hole at \_\_\_\_\_ Casing Leaks: ☐ Yes ☐ No Depth of casing leak(s): \_\_\_\_\_  
(depth) (depth)Type Completion: ☐ ALT. I ☐ ALT. II Depth of: ☐ DV Tool: \_\_\_\_\_ w / \_\_\_\_\_ sacks of cement ☐ Port Collar: \_\_\_\_\_ w / \_\_\_\_\_ sack of cement  
(depth) (depth)

Packer Type: \_\_\_\_\_ Size: \_\_\_\_\_ Inch Set at: \_\_\_\_\_ Feet

Total Depth: \_\_\_\_\_ Plug Back Depth: \_\_\_\_\_ Plug Back Method: \_\_\_\_\_

**Geological Data:****Formation Name**

Formation Top Formation Base

Completion Information

1. \_\_\_\_\_ At: \_\_\_\_\_ to \_\_\_\_\_ Feet Perforation Interval \_\_\_\_\_ to \_\_\_\_\_ Feet or Open Hole Interval \_\_\_\_\_ to \_\_\_\_\_ Feet

2. \_\_\_\_\_ At: \_\_\_\_\_ to \_\_\_\_\_ Feet Perforation Interval \_\_\_\_\_ to \_\_\_\_\_ Feet or Open Hole Interval \_\_\_\_\_ to \_\_\_\_\_ Feet

UNDER PENALTY OF PERJURY I HEREBY ATTEST THAT THE INFORMATION CONTAINED HEREIN IS TRUE AND CORRECT TO THE BEST OF MY KNOWLEDGE

Submitted Electronically

**Do NOT Write in This  
Space - KCC USE ONLY**

Date Tested: \_\_\_\_\_ Results: \_\_\_\_\_ Date Plugged: \_\_\_\_\_ Date Repaired: \_\_\_\_\_ Date Put Back in Service: \_\_\_\_\_

Review Completed by: \_\_\_\_\_ Comments: \_\_\_\_\_

TA Approved: ☐ Yes ☐ Denied Date: \_\_\_\_\_**Mail to the Appropriate KCC Conservation Office:**

	KCC District Office #1 - 210 E. Frontview, Suite A, Dodge City, KS 67801	Phone 620.682.7933
	KCC District Office #2 - 3450 N. Rock Road, Building 600, Suite 601, Wichita, KS 67226	Phone 316.337.7400
	KCC District Office #3 - 137 E. 21st St., Chanute, KS 66720	Phone 620.902.6450
	KCC District Office #4 - 2301 E. 13th Street, Hays, KS 67601-2651	Phone 785.261.6250

Well Name: Sam Boxberger #2  
Company: HG Oil Operation  
Test Date: Mar 01, 2023

Formation:  
Location: Russell County

## Fluid Level and Well Analysis Report

Sam Boxberger #2

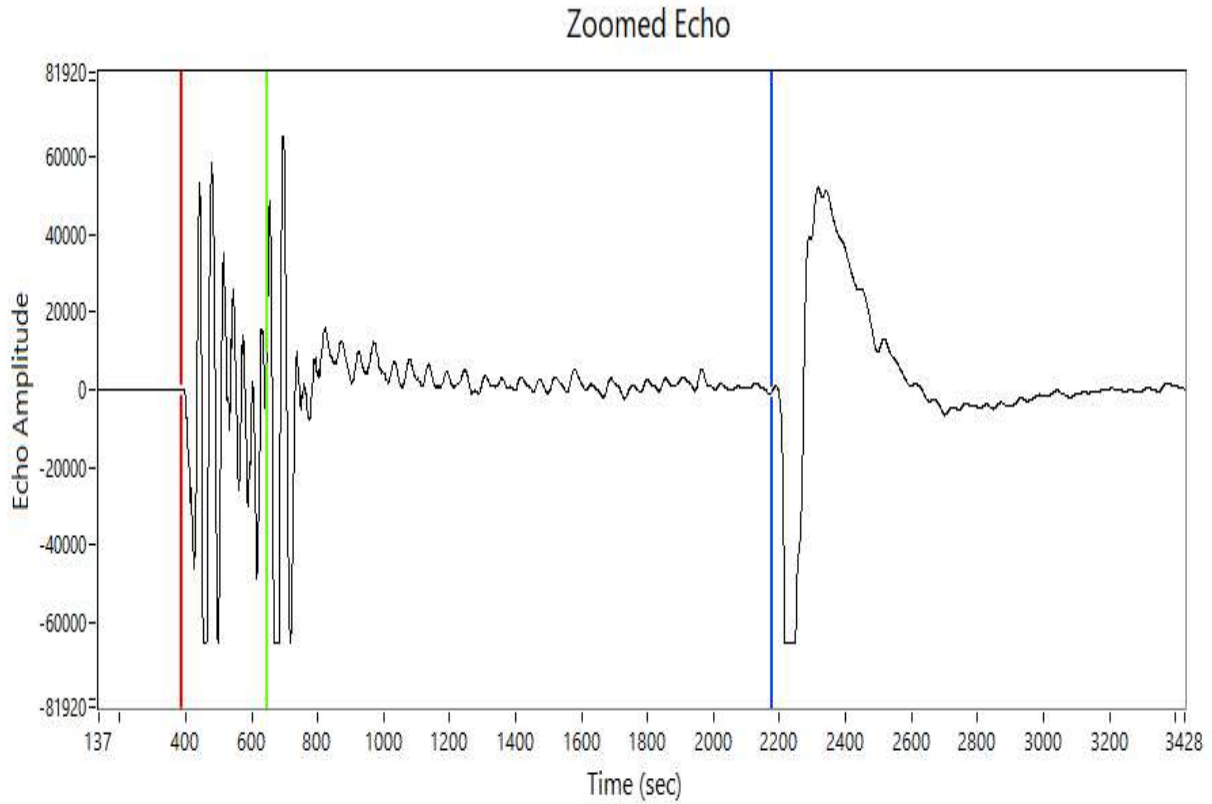
HG Oil Operation

Russell County

Mar 01, 2023

Well Name: Sam Boxberger #2  
Company: HG Oil Operation  
Test Date: Mar 01, 2023

Formation:  
Location: Russell County



Depth:	1024.00 ft
Return Time:	1.79 sec
Acoustic Velocity:	1143.50 ft/s
Average Joint Length:	32.00 ft
Number of Joints:	32.00

Conservation Division  
District Office No. 4  
2301 E. 13th Street  
Hays, KS 67601-2651



Phone: 785-261-6250  
<http://kcc.ks.gov/>

Susan K. Duffy, Chair  
Dwight D. Keen, Commissioner  
Andrew J. French, Commissioner

Laura Kelly, Governor

March 21, 2023

Logan Behr  
HG Oil Holdings, LLC  
PO Box 446  
Hoisington, KS 67544-0446

Re: Temporary Abandonment  
API 15-167-02614-00-00  
SAM BOXBERGER 2  
SE/4 Sec.10-14S-14W  
Russell County, Kansas

Dear Logan Behr:

"Your temporary abandonment (TA) application for the well listed above has been approved. In accordance with K.A.R. 82-3-111 the TA status of this well will expire 03/21/2024.

- \* If you return this well to service or plug it, please notify the District Office.
- \* If you sell this well you are required to file a Transfer of Operator form, T-1.
- \* If the well will remain temporarily abandoned, you must submit a new TA application, CP-111, before 03/21/2024.

You may contact me at the number above if you have questions.

Very truly yours,

RICHARD WILLIAMS"