

KANSAS CORPORATION COMMISSION
OIL & GAS CONSERVATION DIVISION

Form must be Typed
Form must be signed

TEMPORARY ABANDONMENT WELL APPLICATION

All blanks must be complete

OPERATOR: License#
Name:
Address 1:
Address 2:
City: State: Zip:
Contact Person:
Phone:
Contact Person Email:
Field Contact Person:
Field Contact Person Phone:

API No. 15-
Spot Description:
Sec. Twp. S. R.
GPS Location: Lat, Long
Datum: NAD27, NAD83, WGS84
County: Elevation:
Lease Name: Well #:
Well Type: Oil, Gas, OG, WSW, Other
SWD Permit #: ENHR Permit #:
Gas Storage Permit #:
Spud Date: Date Shut-In:

Table with 7 columns: Conductor, Surface, Production, Intermediate, Liner, Tubing. Rows include Size, Setting Depth, Amount of Cement, Top of Cement, Bottom of Cement.

Casing Fluid Level from Surface: How Determined? Date:
Casing Squeeze(s): to w / sacks of cement, to w / sacks of cement. Date:
Do you have a valid Oil & Gas Lease? Yes No
Depth and Type: Junk in Hole at Tools in Hole at Casing Leaks: Yes No Depth of casing leak(s):
Type Completion: ALT. I ALT. II Depth of: DV Tool: w / sacks of cement Port Collar: w / sack of cement
Packer Type: Size: Inch Set at: Feet
Total Depth: Plug Back Depth: Plug Back Method:

Geological Data:

Table with 4 columns: Formation Name, Formation Top, Formation Base, Completion Information. Rows 1 and 2.

UNDER PENALTY OF PERJURY I HEREBY ATTEST THAT THE INFORMATION CONTAINED HEREIN IS TRUE AND CORRECT TO THE BEST OF MY KNOWLEDGE

Submitted Electronically

Do NOT Write in This Space - KCC USE ONLY
Date Tested: Results: Date Plugged: Date Repaired: Date Put Back in Service:
Review Completed by: Comments:
TA Approved: Yes Denied Date:

Mail to the Appropriate KCC Conservation Office:

Table with 3 columns: District Office #, Address, Phone. Rows 1-4.

General

Well ID 125026
 Well Turner 3406 5-7H
 Company Sandridge
 Operator - * -
 Lease Name Turner 3406 5-7H
 Elevation 1309.00 ft
 Production Method Other
 Dataset Description

Comment

Surface Unit

Manufacturer - * -
 Unit Class Conventional
 Unit API Number - * -
 Measured Stroke Length - * - in
 Rotation CW
 Counter Balance Effect (Weights Level) - * - Klb
 Weight Of Counter Weights 2000 lb

Prime Mover

Motor Type Electric
 Rated HP - * - HP
 Run Time 24 hr/day
 MFG/Comment - * -

Electric Motor Parameters

Rated Full Load AMPS - * -
 Rated Full Load RPM - * -
 Synchronous RPM 1200
 Voltage - * -
 Hertz 60
 Phase 3
 Power Consumption 5
 Power Demand 8 \$/KW

Tubulars

Tubing OD 2.875 in
 Casing OD 7.000 in
 Average Joint Length 31.700 ft
 Anchor Depth - * - ft
 Kelly Bushing 19.50 ft

Pump

Plunger Diameter - * - in
 Pump Intake Depth 5207.00 ft
 **Total Rod Length < Pump Depth

Polished Rod

Polished Rod Diameter - * - in

Rod String

	Top Taper	Taper 2	Taper 3	Taper 4	Taper 5	Taper 6
Rod Type	- * -	- * -	- * -	- * -	- * -	- * -
Rod Length	- * -	- * -	- * -	- * -	- * -	- * - ft
Rod Diameter	- * -	- * -	- * -	- * -	- * -	- * - in
Rod Weight	0.0	0.0	0.0	0.0	0.0	0.0 lb

Total Rod Length 0
 Total Rod Weight 0.00

Damp Up 0.051035
 Damp Down 0.051035

Conditions

Pressure

Static BHP 1497.5 psi (g)
 Static BHP Method Acoustic
 Static BHP Date 02/19/2020
 Producing BHP 695.5 psi (g)
 Producing BHP Method Acoustic
 Producing BHP Date 03/15/2023
 Formation Depth 7208.00 ft

Surface Producing Pressures

Tubing Pressure - * - psi (g)
 Casing Pressure 47.0 psi (g)

Casing Pressure Buildup

Change in Pressure 0.7 psi
 Over Change in Time 1.50 min

Production

Oil Production 0 BBL/D
 Water Production 1 BBL/D
 Gas Production - * - Mscf/D
 Production Date 12/10/2019

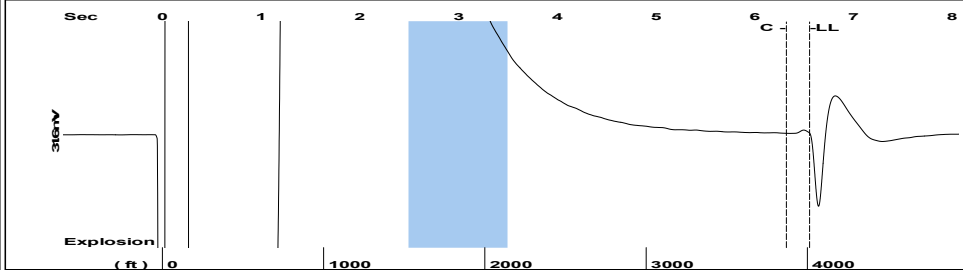
Temperatures

Surface Temperature 70 deg F
 Bottomhole Temperature 150 deg F

Fluid Properties

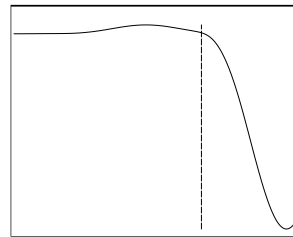
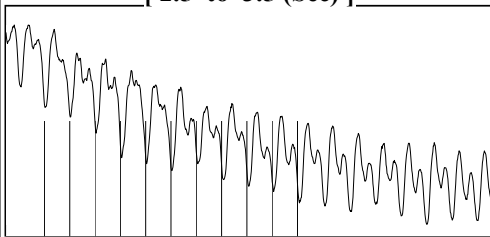
Oil API 40 deg.API
 Water Specific Gravity 1.05 Sp.Gr.H2O

Group: March 2023 Well: Turner 3406 5-7H (acquired on: 03/15/23 12:28:53)



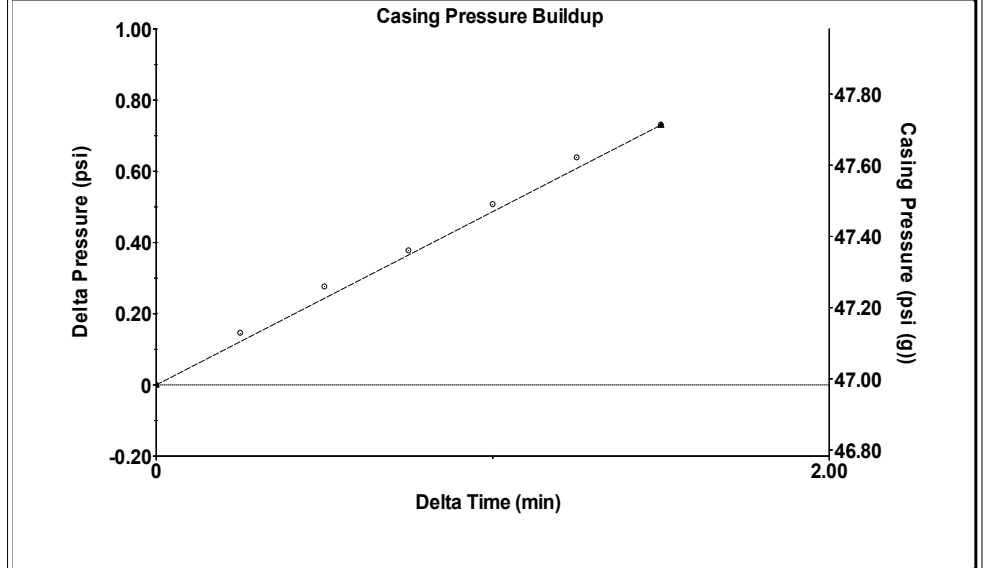
Filter Type High Pass Automatic Collar Count Yes Time 6.555 sec
 Manual Acoustic Veloc 1219.23 ft/s Manual JTS/sec 19.2308 Joints 126.599 Jts
 Depth 4013.18 ft

[2.5 to 3.5 (Sec)]



Analysis Method: Automatic

Group: March 2023 Well: Turner 3406 5-7H (acquired on: 03/15/23 12:28:53)



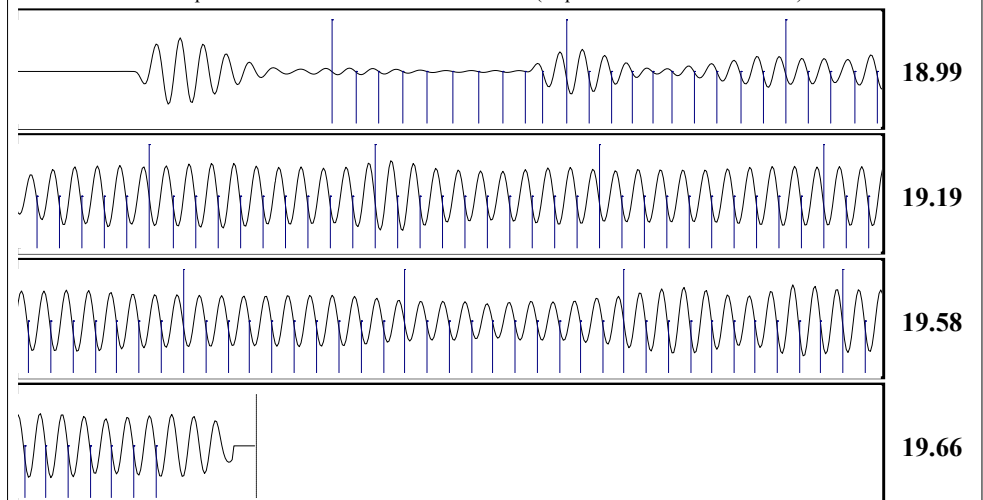
Change in Pressure 0.73 psi PT16722
 Change in Time 1.50 min Range 0 - ? psi

Group: March 2023 Well: Turner 3406 5-7H (acquired on: 03/15/23 12:28:53)

Production	Potential	Casing Pressure		Static
Current	- * - BBL/D	47.0 psi (g)		Oil Column Height
Oil 0	- * - BBL/D	Casing Pressure Buildup		MD 0 ft
Water 1	- * - Mscf/D	0.7 psi		
Gas - * -		1.50 min	Water Column Height	
IPR Method	Vogel	Gas/Liquid Interface Pressure	MD 3175 ft	
PBHP/SBHP	- * -	53.8 psi (g)		
Production Efficiency	0.0	Liquid Level Depth		
		4013.18 ft	Tubing Intake Depth	
Oil 40 deg.API			5207.00 ft	
Water 1.05 Sp.Gr.H2O		Formation Depth	7208.00 ft	
Gas 0.76 Sp.Gr.AIR				
Acoustic Velocity	1224.46 ft/s	Static BHP		1497.5 psi (g)

first shot

Group: March 2023 Well: Turner 3406 5-7H (acquired on: 03/15/23 12:28:53)



Acoustic Velocity 1224.46 ft/s Joints counted 108
 Joints Per Second 19.3133 jts/sec Joints to liquid level 126.599
 Depth to liquid level 4013.18 ft Filter Width 17.2308 21.2308
 Automatic Collar Count Yes Time to 1st Collar 0.728 6.32

Conservation Division
District Office No. 2
3450 N. Rock Road
Building 600, Suite 601
Wichita, KS 67226



Phone: 316-337-7400
<http://kcc.ks.gov/>

Susan K. Duffy, Chair
Dwight D. Keen, Commissioner
Andrew J. French, Commissioner

Laura Kelly, Governor

March 24, 2023

Leah Medrana
SandRidge Exploration and Production LLC
1 E SHERIDAN AVE STE 500
OKLAHOMA CITY, OK 73104-2494

Re: Temporary Abandonment
API 15-077-21918-01-00
TURNER 3406 5-7H
SE/4 Sec.07-34S-06W
Harper County, Kansas

Dear Leah Medrana:

"Your temporary abandonment (TA) application for the well listed above has been approved. In accordance with K.A.R. 82-3-111 the TA status of this well will expire 03/18/2024.

- * If you return this well to service or plug it, please notify the District Office.
- * If you sell this well you are required to file a Transfer of Operator form, T-1.
- * If the well will remain temporarily abandoned, you must submit a new TA application, CP-111, before 03/18/2024.

You may contact me at the number above if you have questions.

Very truly yours,

Nicholas Barkley, ECRS"