

KANSAS CORPORATION COMMISSION
OIL & GAS CONSERVATION DIVISION

TEMPORARY ABANDONMENT WELL APPLICATION

OPERATOR: License# \_\_\_\_\_
Name: \_\_\_\_\_
Address 1: \_\_\_\_\_
Address 2: \_\_\_\_\_
City: \_\_\_\_\_ State: \_\_\_\_\_ Zip: \_\_\_\_\_ + \_\_\_\_\_
Contact Person: \_\_\_\_\_
Phone:( \_\_\_\_\_ ) \_\_\_\_\_
Contact Person Email: \_\_\_\_\_
Field Contact Person: \_\_\_\_\_
Field Contact Person Phone: ( \_\_\_\_\_ ) \_\_\_\_\_

API No. 15- \_\_\_\_\_
Spot Description: \_\_\_\_\_
- - - - - Sec. \_\_\_\_\_ Twp. \_\_\_\_\_ S. R. \_\_\_\_\_ E W
\_\_\_\_\_ feet from N / S Line of Section
\_\_\_\_\_ feet from E / W Line of Section
GPS Location: Lat: \_\_\_\_\_, Long: \_\_\_\_\_
Datum: NAD27 NAD83 WGS84
County: \_\_\_\_\_ Elevation: \_\_\_\_\_ GL KB
Lease Name: \_\_\_\_\_ Well #: \_\_\_\_\_
Well Type: (check one) Oil Gas OG WSW Other: \_\_\_\_\_
SWD Permit #: \_\_\_\_\_ ENHR Permit #: \_\_\_\_\_
Gas Storage Permit #: \_\_\_\_\_
Spud Date: \_\_\_\_\_ Date Shut-In: \_\_\_\_\_

Table with 7 columns: Conductor, Surface, Production, Intermediate, Liner, Tubing. Rows include Size, Setting Depth, Amount of Cement, Top of Cement, Bottom of Cement.

Casing Fluid Level from Surface: \_\_\_\_\_ How Determined? \_\_\_\_\_ Date: \_\_\_\_\_
Casing Squeeze(s): \_\_\_\_\_ to \_\_\_\_\_ w / \_\_\_\_\_ sacks of cement, \_\_\_\_\_ to \_\_\_\_\_ w / \_\_\_\_\_ sacks of cement. Date: \_\_\_\_\_
Do you have a valid Oil & Gas Lease? Yes No
Depth and Type: Junk in Hole at \_\_\_\_\_ Tools in Hole at \_\_\_\_\_ Casing Leaks: Yes No Depth of casing leak(s): \_\_\_\_\_
Type Completion: ALT. I ALT. II Depth of: DV Tool: \_\_\_\_\_ w / \_\_\_\_\_ sacks of cement Port Collar: \_\_\_\_\_ w / \_\_\_\_\_ sack of cement
Packer Type: \_\_\_\_\_ Size: \_\_\_\_\_ Inch Set at: \_\_\_\_\_ Feet
Total Depth: \_\_\_\_\_ Plug Back Depth: \_\_\_\_\_ Plug Back Method: \_\_\_\_\_

Geological Date:

Table with 2 columns: Formation Name, Completion Information. Rows 1 and 2 for formation details.

UNDER PENALTY OF PERJURY I HEREBY ATTEST THAT THE INFORMATION CONTAINED HEREIN IS TRUE AND CORRECT TO THE BEST OF MY KNOWLEDGE

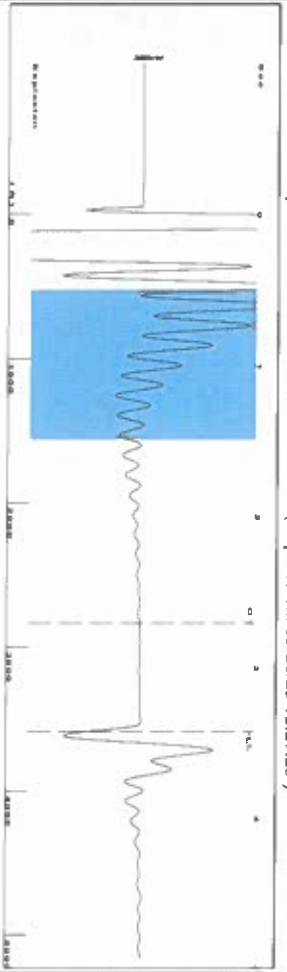
Submitted Electronically

Do NOT Write in This Space - KCC USE ONLY
Date Tested: \_\_\_\_\_ Results: \_\_\_\_\_ Date Plugged: \_\_\_\_\_ Date Repaired: \_\_\_\_\_ Date Put Back in Service: \_\_\_\_\_
Review Completed by: \_\_\_\_\_ Comments: \_\_\_\_\_
TA Approved: Yes Denied Date: \_\_\_\_\_

Mail to the Appropriate KCC Conservation Office:

Table with 2 columns: Office Address, Phone. Rows for KCC District Office #1, #2, #3, and #4.

Group: SUBLETTE Well: Emma Ward 3 (acquired on: 03/26/23 12:29:28 )



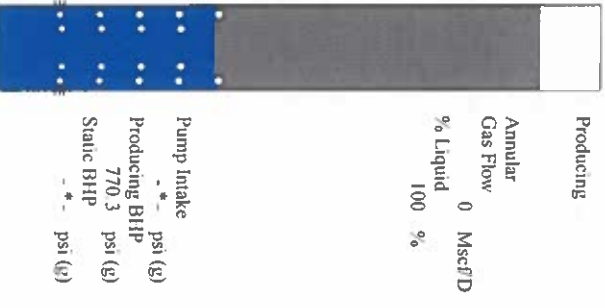
Filter Type High Pass  
 Manual Acoustic Velo 2051.78 ft/s  
 Automatic Collar Count Yes  
 Manual JTS/sec 32.3625  
 Time 3.428 sec  
 Joints 113.189 Jts  
 Depth 3588.08 ft



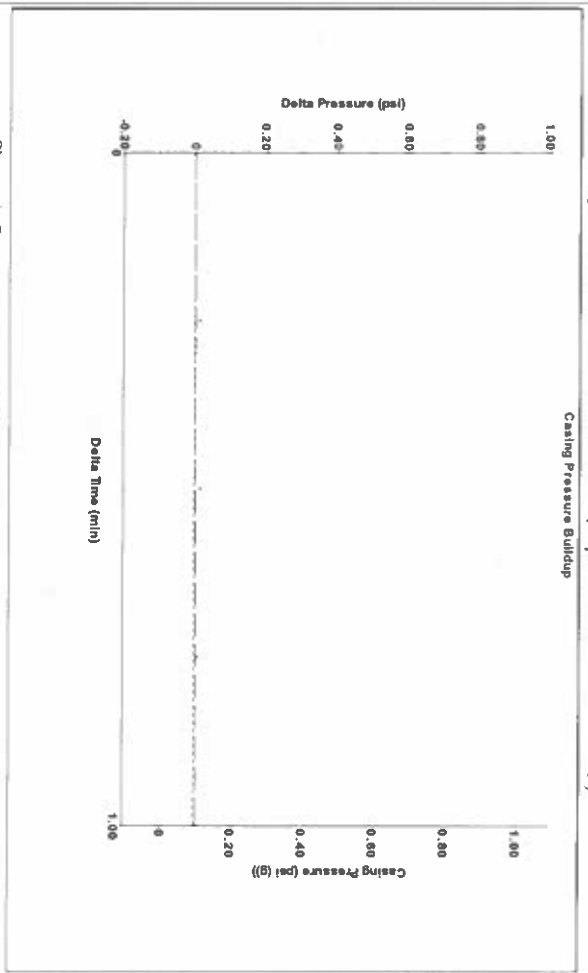
**Analysis Method: Automatic**

Group: SUBLETTE Well: Emma Ward 3 (acquired on: 03/26/23 12:29:28 )

Production Current	Potential	Casing Pressure	Producing
Oil -*- BBL/D	-*- BBL/D	0.1 psi (g)	Annular Gas Flow
Water -*- BBL/D	-*- BBL/D	Casing Pressure Buildup	0 Mscf/D
Gas -*- Mscf/D	-*- Mscf/D	0.0 psi	% Liquid
IPR Method	Vogel	Gas/Liquid Interface Pressure	100 %
PBH/SBHP	-*-	1.00 min	
Production Efficiency	0.0	1.1 psi (g)	
Oil 40 deg API		Liquid Level Depth	
Water 1.05 Sp.Gr.H2O		3588.08 ft	
Gas 0.55 Sp.Gr.AIR		Pump Intake Depth	
Acoustic Velocity	2093.4 ft/s	Formation Depth	
		5280.00 ft	

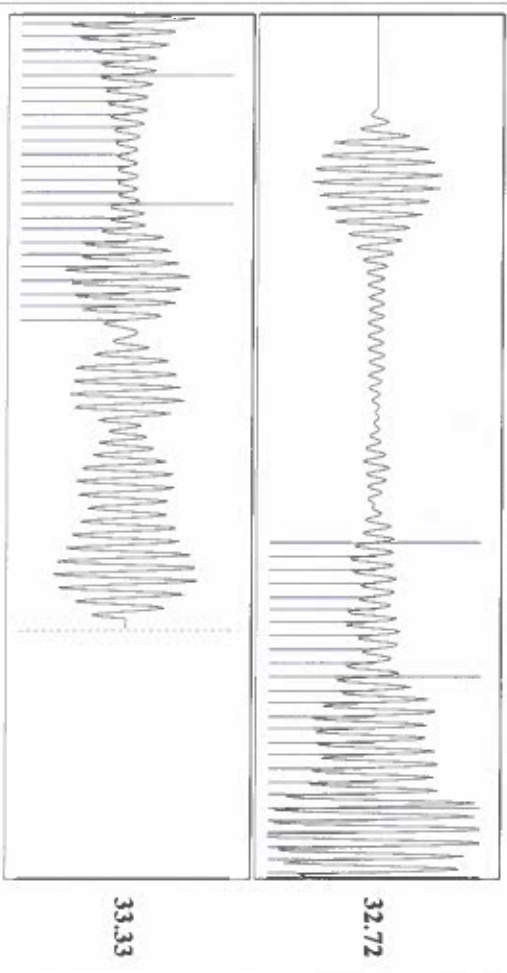


Group: SUBLETTE Well: Emma Ward 3 (acquired on: 03/26/23 12:29:28 )



Change in Pressure 0.01 psi  
 Change in Time 1.00 min  
 PT16716  
 Range 0 - 2 psi

Group: SUBLETTE Well: Emma Ward 3 (acquired on: 03/26/23 12:29:28 )



Acoustic Velocity 2093.4 ft/s  
 Joints Per Second 33.0189 jts/sec  
 Depth to liquid level 3588.08 ft  
 Automatic Collar Count Yes  
 Joints counted 49  
 Joints to liquid level 113.189  
 Filter Width 30.3625  
 Time to 1st Collar 1.224  
 34.3625  
 2.708

March 28, 2023

Katherine McClurkan  
Merit Energy Company, LLC  
13727 Noel Road, Suite 1200  
Dallas, Texas 75240-7362

Re: Temporary Abandonment  
API 15-081-22194-00-00  
Emma Ward 3  
NW/4 Sec.35-27S-34W  
Haskell County, Kansas

Dear Katherine McClurkan:

"Your temporary abandonment (TA) application for the well listed above has been approved. In accordance with K.A.R. 82-3-111 the TA status of this well will expire 03/28/2024.

- \* If you return this well to service or plug it, please notify the District Office.
- \* If you sell this well you are required to file a Transfer of Operator form, T-1.
- \* If the well will remain temporarily abandoned, you must submit a new TA application, CP-111, before 03/28/2024.

You may contact me at the number above if you have questions.

Very truly yours,

Michael Maier"