

KANSAS CORPORATION COMMISSION
OIL & GAS CONSERVATION DIVISION

Form must be Typed
Form must be signed

TEMPORARY ABANDONMENT WELL APPLICATION

All blanks must be complete

OPERATOR: License#
Name:
Address 1:
Address 2:
City: State: Zip:
Contact Person:
Phone:
Contact Person Email:
Field Contact Person:
Field Contact Person Phone:

API No. 15-
Spot Description:
Sec. Twp. S. R.
feet from N / S Line of Section
feet from E / W Line of Section
GPS Location: Lat: , Long:
Datum: NAD27 NAD83 WGS84
County: Elevation: GL KB
Lease Name: Well #:
Well Type: (check one) Oil Gas OG WSW Other:
SWD Permit #: ENHR Permit #:
Gas Storage Permit #:
Spud Date: Date Shut-In:

Table with 7 columns: Conductor, Surface, Production, Intermediate, Liner, Tubing. Rows include Size, Setting Depth, Amount of Cement, Top of Cement, Bottom of Cement.

Casing Fluid Level from Surface: How Determined? Date:
Casing Squeeze(s): to w / sacks of cement, to w / sacks of cement. Date:
Do you have a valid Oil & Gas Lease? Yes No
Depth and Type: Junk in Hole at Tools in Hole at Casing Leaks: Yes No Depth of casing leak(s):
Type Completion: ALT. I ALT. II Depth of: DV Tool: w / sacks of cement Port Collar: w / sack of cement
Packer Type: Size: Inch Set at: Feet
Total Depth: Plug Back Depth: Plug Back Method:

Geological Data:

Table with 4 columns: Formation Name, Formation Top, Formation Base, Completion Information. Rows 1 and 2.

UNDER PENALTY OF PERJURY I HEREBY ATTEST THAT THE INFORMATION CONTAINED HEREIN IS TRUE AND CORRECT TO THE BEST OF MY KNOWLEDGE

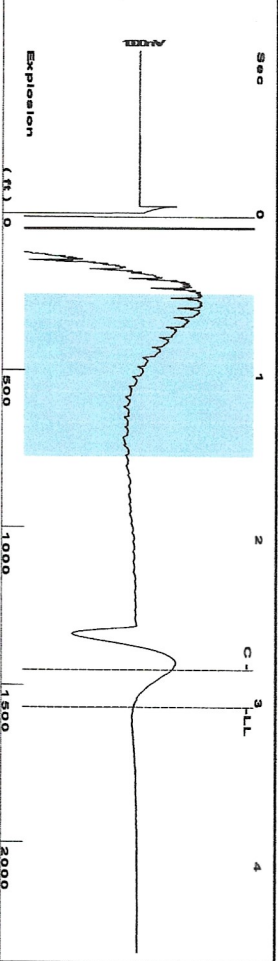
Submitted Electronically

Do NOT Write in This Space - KCC USE ONLY
Date Tested: Results: Date Plugged: Date Repaired: Date Put Back in Service:
Review Completed by: Comments:
TA Approved: Yes Denied Date:

Mail to the Appropriate KCC Conservation Office:

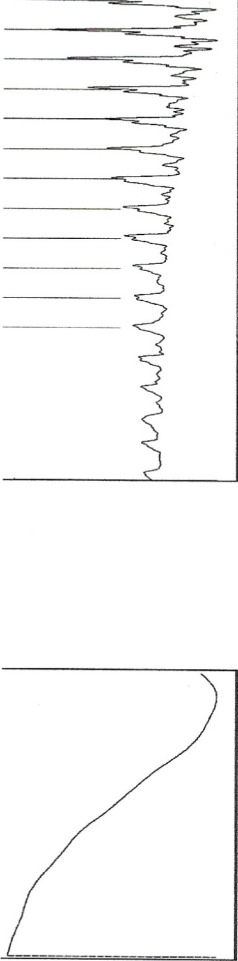
Table with 3 columns: District Office, Address, Phone. Rows for District Office #1, #2, #3, #4.

Group: MyWells Well: Pritchett #2 (acquired on: 03/20/23 12:23:14)



Filter Type High Pass
 Manual Acoustic Veloc 023.68 ft/s
 Automatic Collar Count Yes
 Manual JTS/sec 16.4474
 Time 3.03 sec
 Joints 50.5 Jts
 Depth 1571.56 ft

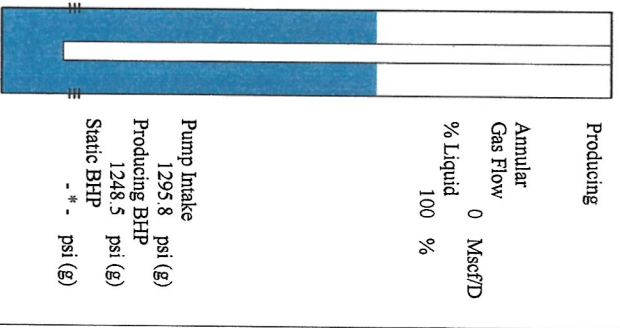
[0.5 to 1.5 (Sec)]



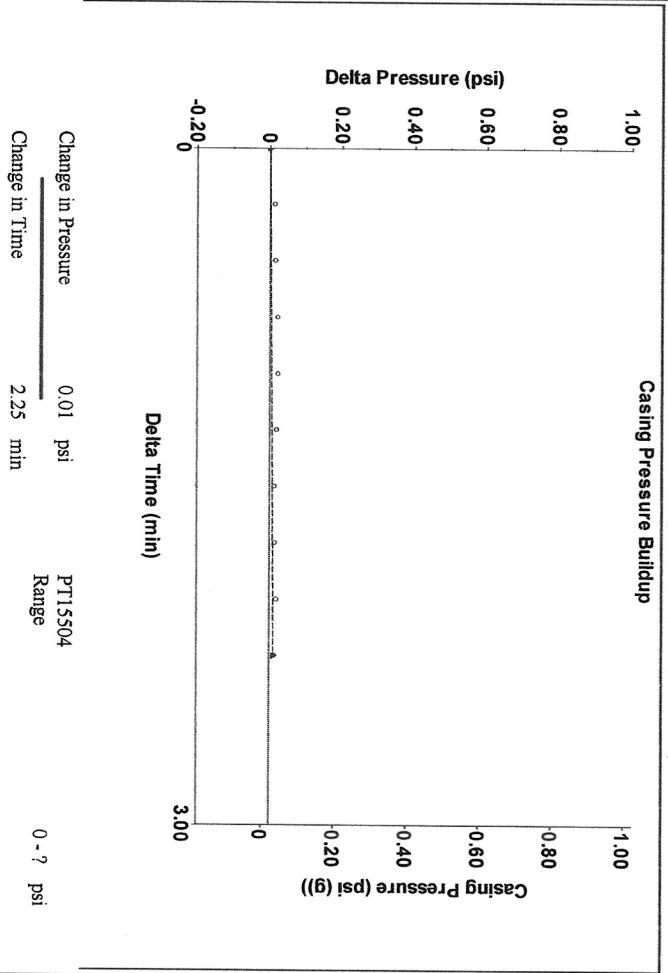
Analysis Method: Automatic

Group: MyWells Well: Pritchett #2 (acquired on: 03/20/23 12:23:14)

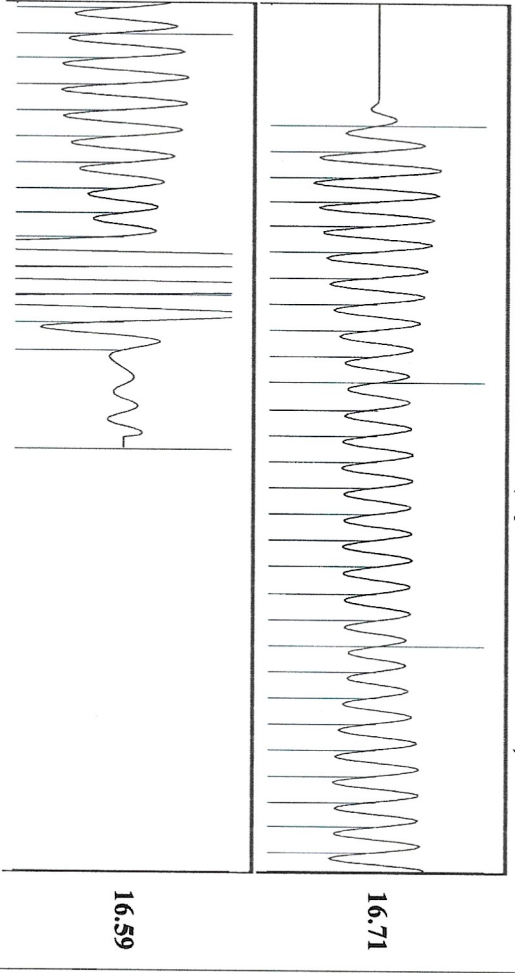
Production	Potential	Casing Pressure	Producing
Current	0	0.0 psi (g)	Annular
Oil	0	0.012 psi	Gas Flow
Water	200	2.25 min	% Liquid
Gas	0.0	0.8 psi (g)	100 %
IPR Method	Vogel	Gas/Liquid Interface Pressure	
PBHP/SBHP	-*-	0.8 psi (g)	
Production Efficiency	0.0	Liquid Level Depth	
		1571.56 ft	
Oil	39 deg API	Pump Intake Depth	
Water	1.05 Sp-Gr-H2O	4420.00 ft	
Gas	0.93 Sp-Gr-AIR	Formation Depth	
		4316.00 ft	
Acoustic Velocity	1037.33 ft/s		
Formation Submergence			
Total Gaseous Liquid Column HT (TVD)			
Equivalent Gas Free Liquid HT (TVD)			
Acoustic Test			



Group: MyWells Well: Pritchett #2 (acquired on: 03/20/23 12:23:14)



Group: MyWells Well: Pritchett #2 (acquired on: 03/20/23 12:23:14)



Acoustic Velocity 1037.33 ft/s
 Joints Per Second 16.6667 Jts/sec
 Depth to liquid level 1571.56 ft
 Automatic Collar Count Yes
 Joints counted 42
 Joints to liquid level 50.5
 Filter Width 14.4474
 Time to 1st Collar 0.28

March 28, 2023

Catherine H Stucky
Hartman Oil Co., Inc.
10500 E BERKELEY SQ PKWY STE 100
WICHITA, KS 67206-6816

Re: Temporary Abandonment
API 15-055-20137-00-01
PRITCHETT OWWO 2
NW/4 Sec.04-22S-33W
Finney County, Kansas

Dear Catherine H Stucky:

"Your temporary abandonment (TA) application for the well listed above has been approved. In accordance with K.A.R. 82-3-111 the TA status of this well will expire 03/28/2024.

- * If you return this well to service or plug it, please notify the District Office.
- * If you sell this well you are required to file a Transfer of Operator form, T-1.
- * If the well will remain temporarily abandoned, you must submit a new TA application, CP-111, before 03/28/2024.

You may contact me at the number above if you have questions.

Very truly yours,

Michael Maier"