

KANSAS CORPORATION COMMISSION  
OIL & GAS CONSERVATION DIVISION

TEMPORARY ABANDONMENT WELL APPLICATION

OPERATOR: License# \_\_\_\_\_  
 Name: \_\_\_\_\_  
 Address 1: \_\_\_\_\_  
 Address 2: \_\_\_\_\_  
 City: \_\_\_\_\_ State: \_\_\_\_\_ Zip: \_\_\_\_\_ + \_\_\_\_\_  
 Contact Person: \_\_\_\_\_  
 Phone: ( \_\_\_\_\_ ) \_\_\_\_\_  
 Contact Person Email: \_\_\_\_\_  
 Field Contact Person: \_\_\_\_\_  
 Field Contact Person Phone: ( \_\_\_\_\_ ) \_\_\_\_\_

API No. 15- \_\_\_\_\_  
 Spot Description: \_\_\_\_\_  
 \_\_\_\_\_ - \_\_\_\_\_ - \_\_\_\_\_ - \_\_\_\_\_ Sec. \_\_\_\_\_ Twp. \_\_\_\_\_ S. R. \_\_\_\_\_  E  W  
 \_\_\_\_\_ feet from  N /  S Line of Section  
 \_\_\_\_\_ feet from  E /  W Line of Section  
 GPS Location: Lat: \_\_\_\_\_, Long: \_\_\_\_\_  
(e.g. xx.xxxxx) (e.g. -xxx.xxxxx)  
 Datum:  NAD27  NAD83  WGS84  
 County: \_\_\_\_\_ Elevation: \_\_\_\_\_  GL  KB  
 Lease Name: \_\_\_\_\_ Well #: \_\_\_\_\_  
 Well Type: (check one)  Oil  Gas  OG  WSW  Other: \_\_\_\_\_  
 SWD Permit #: \_\_\_\_\_  ENHR Permit #: \_\_\_\_\_  
 Gas Storage Permit #: \_\_\_\_\_  
 Spud Date: \_\_\_\_\_ Date Shut-In: \_\_\_\_\_

|                  | Conductor | Surface | Production | Intermediate | Liner | Tubing |
|------------------|-----------|---------|------------|--------------|-------|--------|
| Size             |           |         |            |              |       |        |
| Setting Depth    |           |         |            |              |       |        |
| Amount of Cement |           |         |            |              |       |        |
| Top of Cement    |           |         |            |              |       |        |
| Bottom of Cement |           |         |            |              |       |        |

Casing Fluid Level from Surface: \_\_\_\_\_ How Determined? \_\_\_\_\_ Date: \_\_\_\_\_  
 Casing Squeeze(s): \_\_\_\_\_ to \_\_\_\_\_ w / \_\_\_\_\_ sacks of cement, \_\_\_\_\_ to \_\_\_\_\_ w / \_\_\_\_\_ sacks of cement. Date: \_\_\_\_\_  
(top) (bottom) (top) (bottom)  
 Do you have a valid Oil & Gas Lease?  Yes  No  
 Depth and Type:  Junk in Hole at \_\_\_\_\_  Tools in Hole at \_\_\_\_\_ Casing Leaks:  Yes  No Depth of casing leak(s): \_\_\_\_\_  
(depth) (depth)  
 Type Completion:  ALT. I  ALT. II Depth of:  DV Tool: \_\_\_\_\_ w / \_\_\_\_\_ sacks of cement  Port Collar: \_\_\_\_\_ w / \_\_\_\_\_ sack of cement  
(depth) (depth)  
 Packer Type: \_\_\_\_\_ Size: \_\_\_\_\_ Inch Set at: \_\_\_\_\_ Feet  
 Total Depth: \_\_\_\_\_ Plug Back Depth: \_\_\_\_\_ Plug Back Method: \_\_\_\_\_

**Geological Data:**

| Formation Name | Formation Top | Formation Base | Completion Information   |
|----------------|---------------|----------------|--|
| 1. _____       | At: _____     | to _____ Feet  | Perforation Interval _____ to _____ Feet or Open Hole Interval _____ to _____ Feet |
| 2. _____       | At: _____     | to _____ Feet  | Perforation Interval _____ to _____ Feet or Open Hole Interval _____ to _____ Feet |

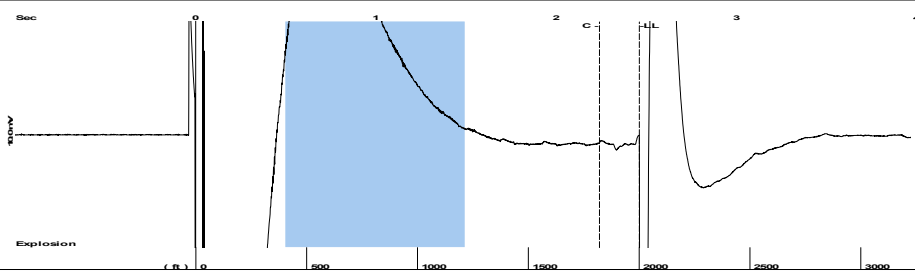
UNDER PENALTY OF PERJURY I HEREBY ATTEST THAT THE INFORMATION CONTAINED HEREIN IS TRUE AND CORRECT TO THE BEST OF MY KNOWLEDGE

Submitted Electronically

|   |  |                |                     |                      |                                 |
|---|--|----------------|---------------------|----------------------|---------------------------------|
| <b>Do NOT Write in This Space - KCC USE ONLY</b>                                      | Date Tested: _____                         | Results: _____ | Date Plugged: _____ | Date Repaired: _____ | Date Put Back in Service: _____ |
|   | Review Completed by: _____ Comments: _____ |                |                     |                      |                                 |
| TA Approved: <input type="checkbox"/> Yes <input type="checkbox"/> Denied Date: _____ |  |                |                     |                      |                                 |

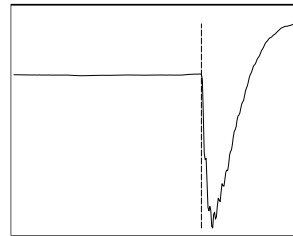
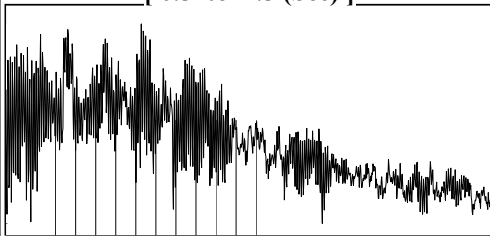
Mail to the Appropriate KCC Conservation Office:

|  |  |                    |
|--|--|--------------------|
|  | KCC District Office #1 - 210 E. Frontview, Suite A, Dodge City, KS 67801               | Phone 620.682.7933 |
|  | KCC District Office #2 - 3450 N. Rock Road, Building 600, Suite 601, Wichita, KS 67226 | Phone 316.337.7400 |
|  | KCC District Office #3 - 137 E. 21st St., Chanute, KS 66720                            | Phone 620.902.6450 |
|  | KCC District Office #4 - 2301 E. 13th Street, Hays, KS 67601-2651                      | Phone 785.261.6250 |



Filter Type High Pass Automatic Collar Count Yes Time 2.461 sec  
 Manual Acoustic Veloc 1538.83 ft/s Manual JTS/sec 24.2718 Joints 63.1026 Jts  
 Depth 2000.35 ft

[ 0.5 to 1.5 (Sec) ]

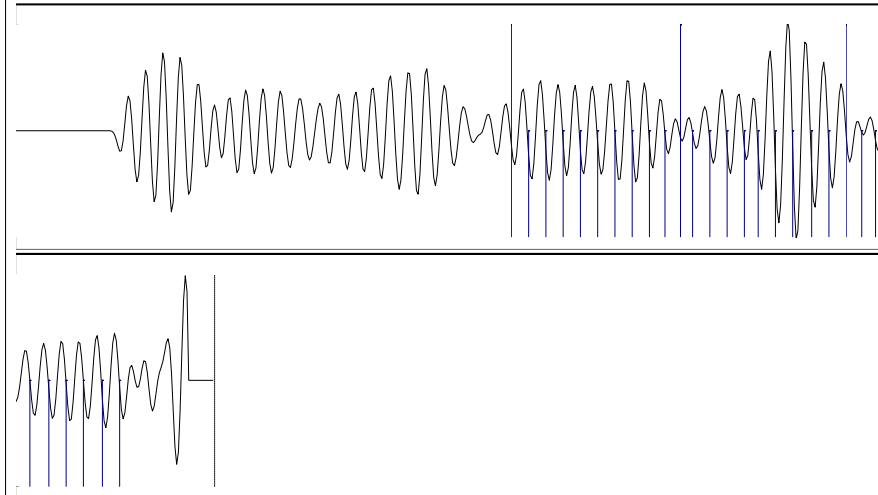


Analysis Method: Automatic



Change in Pressure -0.04 psi PT18514  
 Range 0 - ? psi  
 Change in Time 0.50 min

|                                      |         |           |        |                               |         |           |              |
|--------------------------------------|---------|-----------|--------|-------------------------------|---------|-----------|--------------|
| Production                           |         | Potential |        | Casing Pressure               |         | Producing |              |
| Oil                                  | - * -   | - * -     | BBL/D  | -2.7                          | psi (g) | Annular   |              |
| Water                                | - * -   | - * -     | BBL/D  | Casing Pressure Buildup       | 0.50    | Gas Flow  | - * - Mscf/D |
| Gas                                  | - * -   | - * -     | Mscf/D | -0.0                          | min     | % Liquid  | 100 %        |
| IPR Method                           |         | Vogel     |        | Gas/Liquid Interface Pressure | - * -   | psi (g)   |              |
| PBHP/SBHP                            |         | - * -     |        | Liquid Level Depth            | 2000.35 | ft        |              |
| Production Efficiency                |         | 0.0       |        | Pump Intake Depth             | - * -   | ft        |              |
| Oil                                  | 40      | deg.API   |        | Formation Depth               | 4870.00 | ft        |              |
| Water                                | 1.05    | Sp.Gr.H2O |        |                               |         |           |              |
| Gas                                  | 0.55    | Sp.Gr.AIR |        |                               |         |           |              |
| Acoustic Velocity                    | 1625.64 | ft/s      |        |                               |         |           |              |
| Formation Submergence                |         |           |        |                               |         |           |              |
| Total Gaseous Liquid Column HT (TVD) |         |           | - * -  | ft                            |         |           |              |
| Equivalent Gas Free Liquid HT (TVD)  |         |           | - * -  | ft                            |         |           |              |
| Acoustic Test                        |         |           |        |                               |         |           |              |



26.07  
 24.19

|                        |         |         |                        |         |
|------------------------|---------|---------|------------------------|---------|
| Acoustic Velocity      | 1625.64 | ft/s    | Joints counted         | 28      |
| Joints Per Second      | 25.641  | jts/sec | Joints to liquid level | 63.1026 |
| Depth to liquid level  | 2000.35 | ft      | Filter Width           | 22.2718 |
| Automatic Collar Count | Yes     |         | Time to 1st Collar     | 1.148   |
|                        |         |         |                        | 2.24    |

March 28, 2023

Octavio Morales  
American Warrior, Inc.  
PO BOX 399  
GARDEN CITY, KS 67846-0399

Re: Temporary Abandonment  
API 15-083-21984-00-00  
HUBIN UNIT 1-15  
NW/4 Sec.15-23S-23W  
Hodgeman County, Kansas

Dear Octavio Morales:

"Your temporary abandonment (TA) application for the well listed above has been approved. In accordance with K.A.R. 82-3-111 the TA status of this well will expire 03/28/2024.

- \* If you return this well to service or plug it, please notify the District Office.
- \* If you sell this well you are required to file a Transfer of Operator form, T-1.
- \* If the well will remain temporarily abandoned, you must submit a new TA application, CP-111, before 03/28/2024.

You may contact me at the number above if you have questions.

Very truly yours,

Michael Maier"