

KANSAS CORPORATION COMMISSION  
OIL & GAS CONSERVATION DIVISION

KOLAR Document ID: 1706410

Form CP-111

July 2017

Form must be Typed

Form must be signed

All blanks must be complete

TEMPORARY ABANDONMENT WELL APPLICATION

OPERATOR: License# \_\_\_\_\_  
Name: \_\_\_\_\_  
Address 1: \_\_\_\_\_  
Address 2: \_\_\_\_\_  
City: \_\_\_\_\_ State: \_\_\_\_\_ Zip: \_\_\_\_\_ + \_\_\_\_\_  
Contact Person: \_\_\_\_\_  
Phone: ( \_\_\_\_\_ ) \_\_\_\_\_  
Contact Person Email: \_\_\_\_\_  
Field Contact Person: \_\_\_\_\_  
Field Contact Person Phone: ( \_\_\_\_\_ ) \_\_\_\_\_

API No. 15- \_\_\_\_\_  
Spot Description: \_\_\_\_\_  
\_\_\_\_ - \_\_\_\_ - \_\_\_\_ - \_\_\_\_ Sec. \_\_\_\_\_ Twp. \_\_\_\_\_ S. R. \_\_\_\_\_  E  W  
\_\_\_\_\_ feet from  N /  S Line of Section  
\_\_\_\_\_ feet from  E /  W Line of Section  
GPS Location: Lat: \_\_\_\_\_, Long: \_\_\_\_\_  
(e.g. xx.xxxxx) (e.g. -xxx.xxxxx)  
Datum:  NAD27  NAD83  WGS84  
County: \_\_\_\_\_ Elevation: \_\_\_\_\_  GL  KB  
Lease Name: \_\_\_\_\_ Well #: \_\_\_\_\_  
Well Type: (check one)  Oil  Gas  OG  WSW  Other: \_\_\_\_\_  
 SWD Permit #: \_\_\_\_\_  ENHR Permit #: \_\_\_\_\_  
 Gas Storage Permit #: \_\_\_\_\_  
Spud Date: \_\_\_\_\_ Date Shut-In: \_\_\_\_\_

	Conductor	Surface	Production	Intermediate	Liner	Tubing
Size						
Setting Depth						
Amount of Cement						
Top of Cement						
Bottom of Cement						

Casing Fluid Level from Surface: \_\_\_\_\_ How Determined? \_\_\_\_\_ Date: \_\_\_\_\_  
Casing Squeeze(s): \_\_\_\_\_ to \_\_\_\_\_ w / \_\_\_\_\_ sacks of cement, \_\_\_\_\_ to \_\_\_\_\_ w / \_\_\_\_\_ sacks of cement. Date: \_\_\_\_\_  
(top) (bottom) (top) (bottom)  
Do you have a valid Oil & Gas Lease?  Yes  No  
Depth and Type:  Junk in Hole at \_\_\_\_\_  Tools in Hole at \_\_\_\_\_ Casing Leaks:  Yes  No Depth of casing leak(s): \_\_\_\_\_  
(depth) (depth)  
Type Completion:  ALT. I  ALT. II Depth of:  DV Tool: \_\_\_\_\_ w / \_\_\_\_\_ sacks of cement  Port Collar: \_\_\_\_\_ w / \_\_\_\_\_ sack of cement  
(depth) (depth)  
Packer Type: \_\_\_\_\_ Size: \_\_\_\_\_ Inch Set at: \_\_\_\_\_ Feet  
Total Depth: \_\_\_\_\_ Plug Back Depth: \_\_\_\_\_ Plug Back Method: \_\_\_\_\_

Geological Data:

Formation Name	Formation Top	Formation Base	Completion Information
1. _____	At: _____	to _____ Feet	Perforation Interval _____ to _____ Feet or Open Hole Interval _____ to _____ Feet
2. _____	At: _____	to _____ Feet	Perforation Interval _____ to _____ Feet or Open Hole Interval _____ to _____ Feet

UNDER PENALTY OF PERJURY I HEREBY ATTEST THAT THE INFORMATION CONTAINED HEREIN IS TRUE AND CORRECT TO THE BEST OF MY KNOWLEDGE

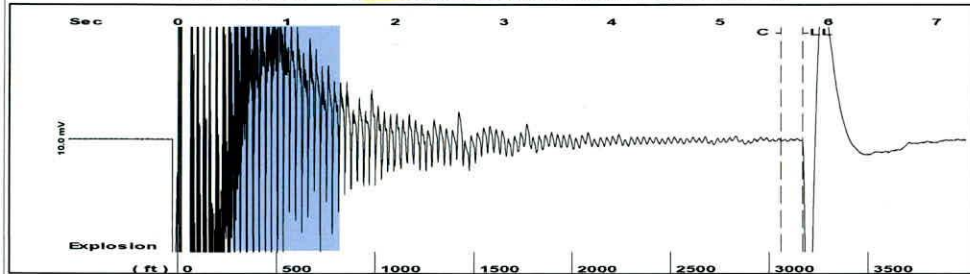
Submitted Electronically

<b>Do NOT Write in This Space - KCC USE ONLY</b>	Date Tested: _____	Results: _____	Date Plugged: _____	Date Repaired: _____	Date Put Back in Service: _____
	Review Completed by: _____ Comments: _____				
TA Approved: <input type="checkbox"/> Yes <input type="checkbox"/> Denied Date: _____					

Mail to the Appropriate KCC Conservation Office:

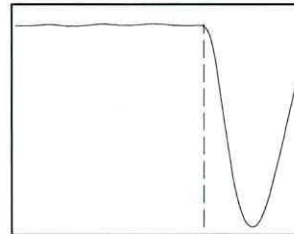
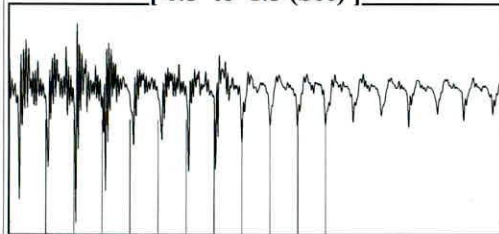
	KCC District Office #1 - 210 E. Frontview, Suite A, Dodge City, KS 67801	Phone 620.682.7933
	KCC District Office #2 - 3450 N. Rock Road, Building 600, Suite 601, Wichita, KS 67226	Phone 316.337.7400
	KCC District Office #3 - 137 E. 21st St., Chanute, KS 66720	Phone 620.902.6450
	KCC District Office #4 - 2301 E. 13th Street, Hays, KS 67601-2651	Phone 785.261.6250

Group: MyWells Well: Boonedocker 3 (acquired on: 03/22/23 10:16:51 )



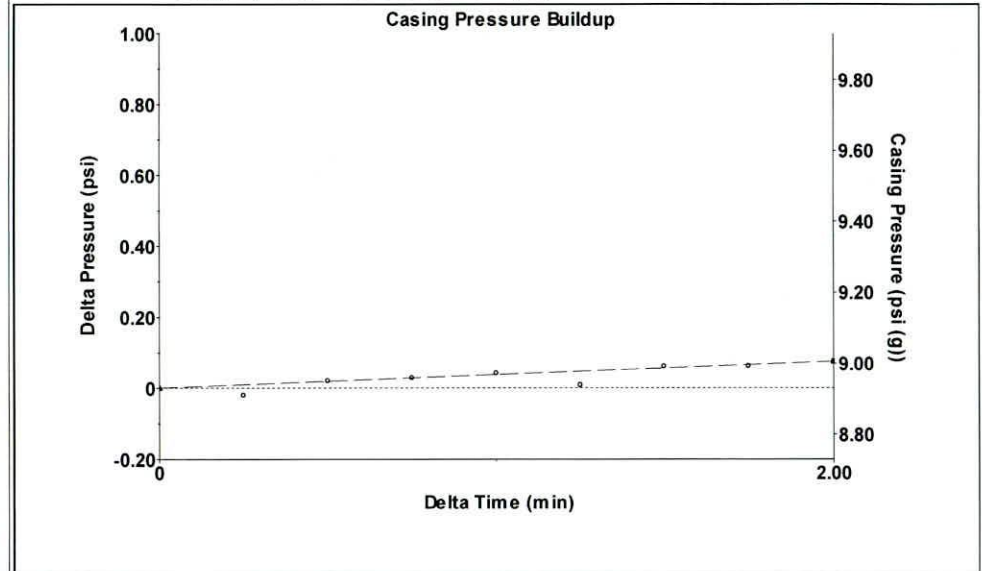
Filter Type High Pass Automatic Collar Count Yes Time 5.766 sec  
 Manual Acoustic Velo 1099.65 ft/s Manual JTS/sec 17.5439 Joints 101.177 Jts  
 Depth 3170.89 ft

[ 0.5 to 1.5 (Sec) ]



Analysis Method: Automatic

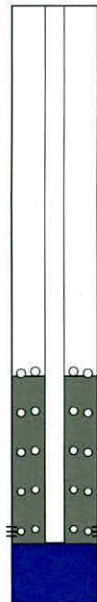
Group: MyWells Well: Boonedocker 3 (acquired on: 03/22/23 10:16:51 )



Change in Pressure 0.08 psi PT15565  
 Change in Time 2.00 min Range 0 - ? psi

Group: MyWells Well: Boonedocker 3 (acquired on: 03/22/23 10:16:51 )

<b>Production</b>		<b>Casing Pressure</b>	
Current	Potential	8.9 psi (g)	
Oil - * -	- * - BBL/D	<b>Casing Pressure Buildup</b>	
Water - * -	- * - BBL/D	0.1 psi	
Gas - * -	- * - Mscf/D	2.00 min	
<b>IPR Method</b>		<b>Gas/Liquid Interface Pressure</b>	
PBHP/SBHP	Vogel	11.3 psi (g)	
Production Efficiency	0.0	<b>Liquid Level Depth</b>	
Oil 40 deg.API		3170.89 ft	
Water 1.05 Sp.Gr.H2O		<b>Pump Intake Depth</b>	
Gas 0.88 Sp.Gr.AIR		4888.00 ft	
Acoustic Velocity	1099.86 ft/s	<b>Formation Depth</b>	
		4770.00 ft	

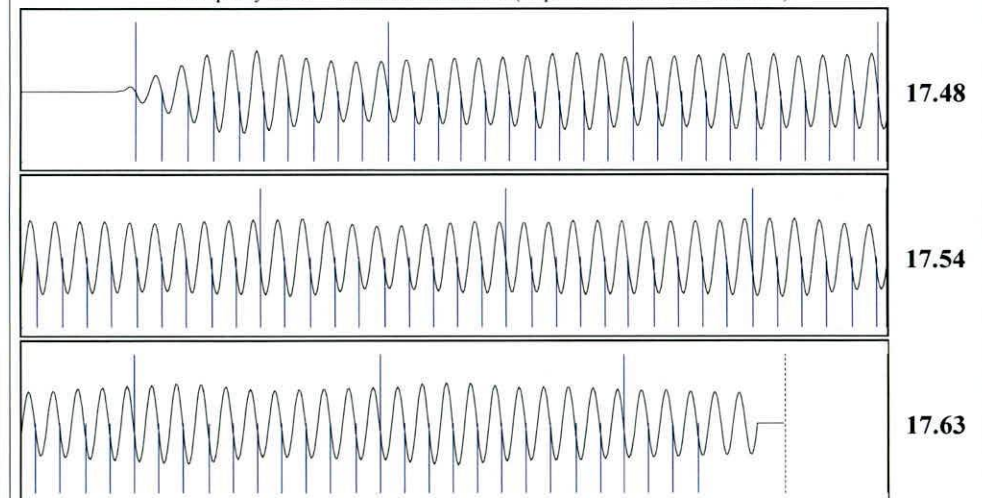


**Producing**  
 Annular Gas Flow 1 Mscf/D  
 % Liquid 96 %  
**Pump Intake**  
 563.3 psi (g)  
**Producing BHP**  
 525.1 psi (g)  
**Static BHP**  
 - \* - psi (g)

**Formation Submergence**  
 Total Gaseous Liquid Column HT (TVD) 1717 ft  
 Equivalent Gas Free Liquid HT (TVD) 1649 ft

Boonedocker 3

Group: MyWells Well: Boonedocker 3 (acquired on: 03/22/23 10:16:51 )



Acoustic Velocity	1099.86 ft/s	Joints counted	93
Joints Per Second	17.5472 jts/sec	Joints to liquid level	101.177
Depth to liquid level	3170.89 ft	Filter Width	15.5439
Automatic Collar Count	Yes	Time to 1st Collar	0.264

March 28, 2023

Anthony Farrar  
Indian Oil Co., Inc.  
2507 SE US HWY 160  
PO BOX 209  
MEDICINE LODGE, KS 67104-0209

Re: Temporary Abandonment  
API 15-007-23828-00-00  
BOONEDOCKER 3  
SE/4 Sec.06-35S-11W  
Barber County, Kansas

Dear Anthony Farrar:

"Your temporary abandonment (TA) application for the well listed above has been approved. In accordance with K.A.R. 82-3-111 the TA status of this well will expire 03/28/2024.

- \* If you return this well to service or plug it, please notify the District Office.
- \* If you sell this well you are required to file a Transfer of Operator form, T-1.
- \* If the well will remain temporarily abandoned, you must submit a new TA application, CP-111, before 03/28/2024.

You may contact me at the number above if you have questions.

Very truly yours,

Michael Maier"