

KANSAS CORPORATION COMMISSION  
OIL & GAS CONSERVATION DIVISION

TEMPORARY ABANDONMENT WELL APPLICATION

OPERATOR: License# \_\_\_\_\_  
 Name: \_\_\_\_\_  
 Address 1: \_\_\_\_\_  
 Address 2: \_\_\_\_\_  
 City: \_\_\_\_\_ State: \_\_\_\_\_ Zip: \_\_\_\_\_ + \_\_\_\_\_  
 Contact Person: \_\_\_\_\_  
 Phone: ( \_\_\_\_\_ ) \_\_\_\_\_  
 Contact Person Email: \_\_\_\_\_  
 Field Contact Person: \_\_\_\_\_  
 Field Contact Person Phone: ( \_\_\_\_\_ ) \_\_\_\_\_

API No. 15- \_\_\_\_\_  
 Spot Description: \_\_\_\_\_  
 \_\_\_\_\_ - \_\_\_\_\_ - \_\_\_\_\_ - \_\_\_\_\_ Sec. \_\_\_\_\_ Twp. \_\_\_\_\_ S. R. \_\_\_\_\_  E  W  
 \_\_\_\_\_ feet from  N /  S Line of Section  
 \_\_\_\_\_ feet from  E /  W Line of Section  
 GPS Location: Lat: \_\_\_\_\_, Long: \_\_\_\_\_  
(e.g. xx.xxxxx) (e.g. -xxx.xxxxx)  
 Datum:  NAD27  NAD83  WGS84  
 County: \_\_\_\_\_ Elevation: \_\_\_\_\_  GL  KB  
 Lease Name: \_\_\_\_\_ Well #: \_\_\_\_\_  
 Well Type: (check one)  Oil  Gas  OG  WSW  Other: \_\_\_\_\_  
 SWD Permit #: \_\_\_\_\_  ENHR Permit #: \_\_\_\_\_  
 Gas Storage Permit #: \_\_\_\_\_  
 Spud Date: \_\_\_\_\_ Date Shut-In: \_\_\_\_\_

	Conductor	Surface	Production	Intermediate	Liner	Tubing
Size						
Setting Depth						
Amount of Cement						
Top of Cement						
Bottom of Cement						

Casing Fluid Level from Surface: \_\_\_\_\_ How Determined? \_\_\_\_\_ Date: \_\_\_\_\_  
 Casing Squeeze(s): \_\_\_\_\_ to \_\_\_\_\_ w / \_\_\_\_\_ sacks of cement, \_\_\_\_\_ to \_\_\_\_\_ w / \_\_\_\_\_ sacks of cement. Date: \_\_\_\_\_  
(top) (bottom) (top) (bottom)  
 Do you have a valid Oil & Gas Lease?  Yes  No  
 Depth and Type:  Junk in Hole at \_\_\_\_\_  Tools in Hole at \_\_\_\_\_ Casing Leaks:  Yes  No Depth of casing leak(s): \_\_\_\_\_  
(depth) (depth)  
 Type Completion:  ALT. I  ALT. II Depth of:  DV Tool: \_\_\_\_\_ w / \_\_\_\_\_ sacks of cement  Port Collar: \_\_\_\_\_ w / \_\_\_\_\_ sack of cement  
(depth) (depth)  
 Packer Type: \_\_\_\_\_ Size: \_\_\_\_\_ Inch Set at: \_\_\_\_\_ Feet  
 Total Depth: \_\_\_\_\_ Plug Back Depth: \_\_\_\_\_ Plug Back Method: \_\_\_\_\_

**Geological Data:**

Formation Name	Formation Top	Formation Base	Completion Information
1. _____	At: _____	to _____ Feet	Perforation Interval _____ to _____ Feet or Open Hole Interval _____ to _____ Feet
2. _____	At: _____	to _____ Feet	Perforation Interval _____ to _____ Feet or Open Hole Interval _____ to _____ Feet

UNDER PENALTY OF PERJURY I HEREBY ATTEST THAT THE INFORMATION CONTAINED HEREIN IS TRUE AND CORRECT TO THE BEST OF MY KNOWLEDGE

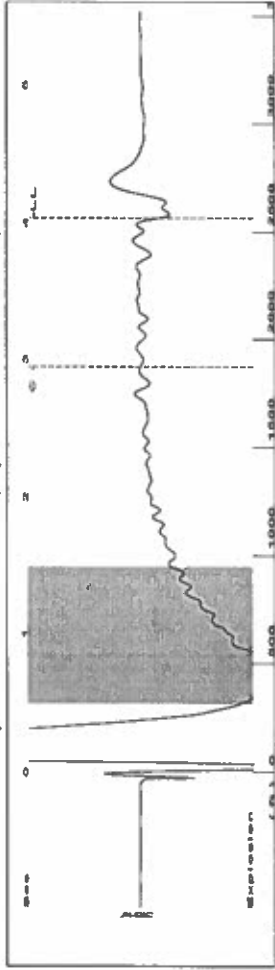
Submitted Electronically

<b>Do NOT Write in This Space - KCC USE ONLY</b>	Date Tested: _____	Results: _____	Date Plugged: _____	Date Repaired: _____	Date Put Back in Service: _____
	Review Completed by: _____ Comments: _____				
TA Approved: <input type="checkbox"/> Yes <input type="checkbox"/> Denied Date: _____					

Mail to the Appropriate KCC Conservation Office:

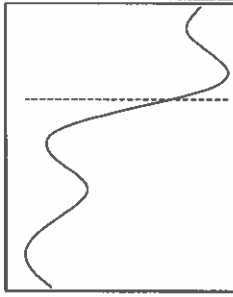
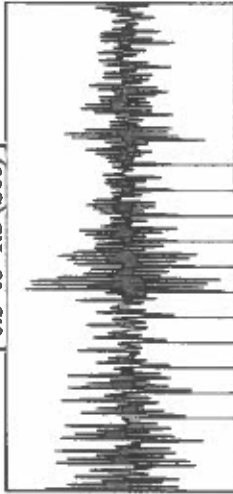
	KCC District Office #1 - 210 E. Frontview, Suite A, Dodge City, KS 67801	Phone 620.682.7933
	KCC District Office #2 - 3450 N. Rock Road, Building 600, Suite 601, Wichita, KS 67226	Phone 316.337.7400
	KCC District Office #3 - 137 E. 21st St., Chanute, KS 66720	Phone 620.902.6450
	KCC District Office #4 - 2301 E. 13th Street, Hays, KS 67601-2651	Phone 785.261.6250

Group: TAD Well: Schaaf A-1 (acquired on: 03/09/23 15:21:30)



Filter Type High Pass Automatic Collar Count Yes Time 4.033 sec  
 Manual Acoustic Veloc 1254.23 ft/s Manual JTS/sec 19.2308 Joints 78.6042 Jts  
 Depth 2563.28 ft

[ 0.5 to 1.5 (Sec) ]

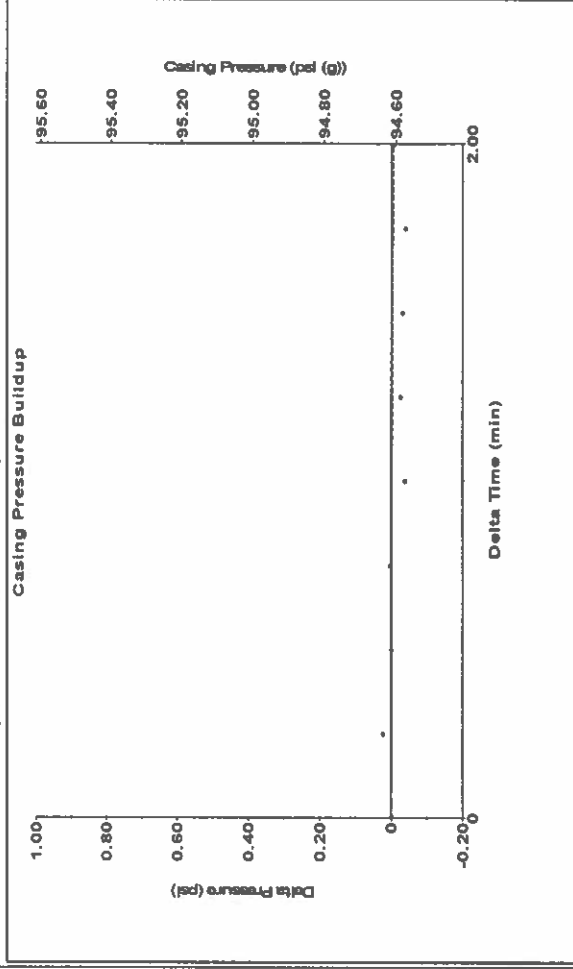


Analysis Method: Automatic

Group: TAD Well: Schaaf A-1 (acquired on: 03/09/23 15:21:30)

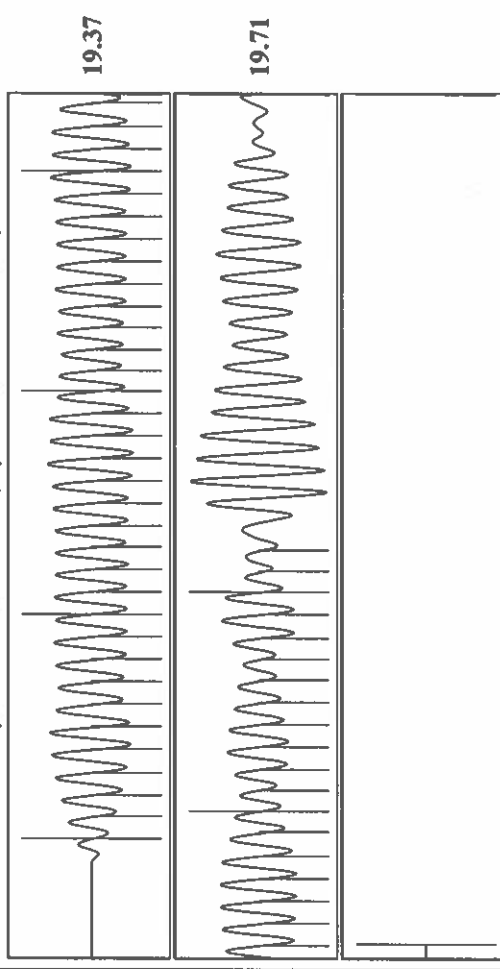
Production	Potential	Casing Pressure	94.6 psi (g)
Current	- * - BBL/D	Casing Pressure Buildup	-0.0 psi
Oil	- * - BBL/D	Change in Time	2.00 min
Water	- * - Mscf/D	Gas/Liquid Interface Pressure	101.7 psi (g)
Gas	- * - Mscf/D	Liquid Level Depth	2563.28 ft
IPR Method	Vogel	Pump Intake Depth	2642.00 ft
PBHP/SBHP	- * -	Formation Depth	2628.00 ft
Production Efficiency	0.0	Acoustic Velocity	1271.15 ft/s
Oil	40 deg API	Formation Submergence	79 ft
Water	1.05 Sp.Gr:H2O	Total Gaseous Liquid Column HT (TVD)	79 ft
Gas	0.72 Sp.Gr:AIR	Equivalent Gas Free Liquid HT (TVD)	
Acoustic Velocity	1271.15 ft/s	Acoustic Test	
Producing	Annular Gas Flow	0 Mscf/D	
% Liquid	100 %		
Pump Intake	128.2 psi (g)		
Producing BHP	123.5 psi (g)		
Static BHP	- * - psi (g)		

Group: TAD Well: Schaaf A-1 (acquired on: 03/09/23 15:21:30)



Change in Pressure -0.01 psi FT 14654 Range  
 Change in Time 2.00 min 0 - 7 psi

Group: TAD Well: Schaaf A-1 (acquired on: 03/09/23 15:21:30)



Acoustic Velocity 1271.15 ft/s Joints counted 52  
 Joints Per Second 19.4903 jts/sec Joints to liquid level 78.6042  
 Depth to liquid level 2563.28 ft Filter Width 21.2308  
 Automatic Collar Count Yes Time to 1st Collar 2.944

March 30, 2023

Katherine McClurkan  
Merit Energy Company, LLC  
13727 Noel Road, Suite 1200  
Dallas, TX 75240-7362

Re: Temporary Abandonment  
API 15-093-00065-00-00  
Schaaf A 1  
NE/4 Sec.02-23S-35W  
Kearny County, Kansas

Dear Katherine McClurkan:

"Your temporary abandonment (TA) application for the well listed above has been approved. In accordance with K.A.R. 82-3-111 the TA status of this well will expire 03/30/2024.

- \* If you return this well to service or plug it, please notify the District Office.
- \* If you sell this well you are required to file a Transfer of Operator form, T-1.
- \* If the well will remain temporarily abandoned, you must submit a new TA application, CP-111, before 03/30/2024.

You may contact me at the number above if you have questions.

Very truly yours,

Michael Maier"