

KANSAS CORPORATION COMMISSION
OIL & GAS CONSERVATION DIVISION

TEMPORARY ABANDONMENT WELL APPLICATION

OPERATOR: License#
Name:
Address 1:
Address 2:
City: State: Zip:
Contact Person:
Phone:
Contact Person Email:
Field Contact Person:
Field Contact Person Phone:

API No. 15-
Spot Description:
Sec. Twp. S. R.
feet from N / S Line of Section
feet from E / W Line of Section
GPS Location: Lat: , Long:
Datum: NAD27 NAD83 WGS84
County: Elevation: GL KB
Lease Name: Well #:
Well Type: Oil Gas OG WSW Other:
SWD Permit #: ENHR Permit #:
Gas Storage Permit #:
Spud Date: Date Shut-In:

Table with 7 columns: Conductor, Surface, Production, Intermediate, Liner, Tubing. Rows include Size, Setting Depth, Amount of Cement, Top of Cement, Bottom of Cement.

Casing Fluid Level from Surface: How Determined? Date:
Casing Squeeze(s): to w / sacks of cement, to w / sacks of cement. Date:
Do you have a valid Oil & Gas Lease? Yes No
Depth and Type: Junk in Hole at Tools in Hole at Casing Leaks: Yes No Depth of casing leak(s):
Type Completion: ALT. I ALT. II Depth of: DV Tool: w / sacks of cement Port Collar: w / sack of cement
Packer Type: Size: Inch Set at: Feet
Total Depth: Plug Back Depth: Plug Back Method:

Geological Data:

Table with 4 columns: Formation Name, Formation Top, Formation Base, Completion Information. Rows 1 and 2.

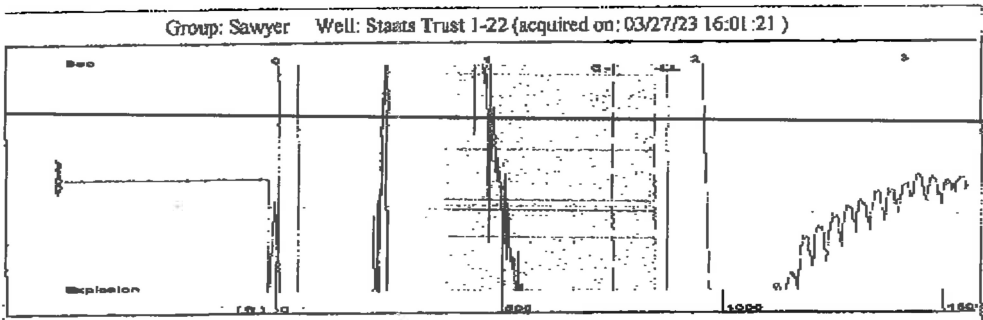
UNDER PENALTY OF PERJURY I HEREBY ATTEST THAT THE INFORMATION CONTAINED HEREIN IS TRUE AND CORRECT TO THE BEST OF MY KNOWLEDGE

Submitted Electronically

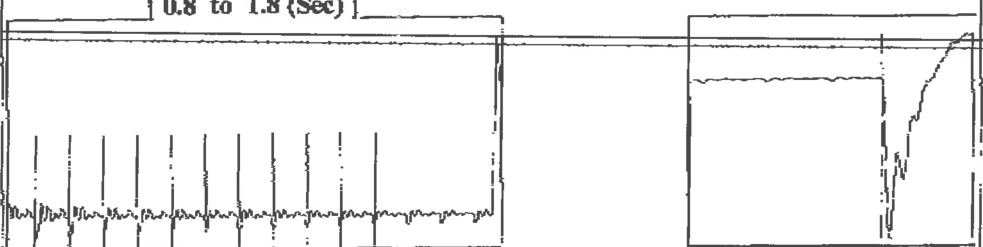
Do NOT Write in This Space - KCC USE ONLY
Date Tested: Results: Date Plugged: Date Repaired: Date Put Back in Service:
Review Completed by: Comments:
TA Approved: Yes Denied Date:

Mail to the Appropriate KCC Conservation Office:

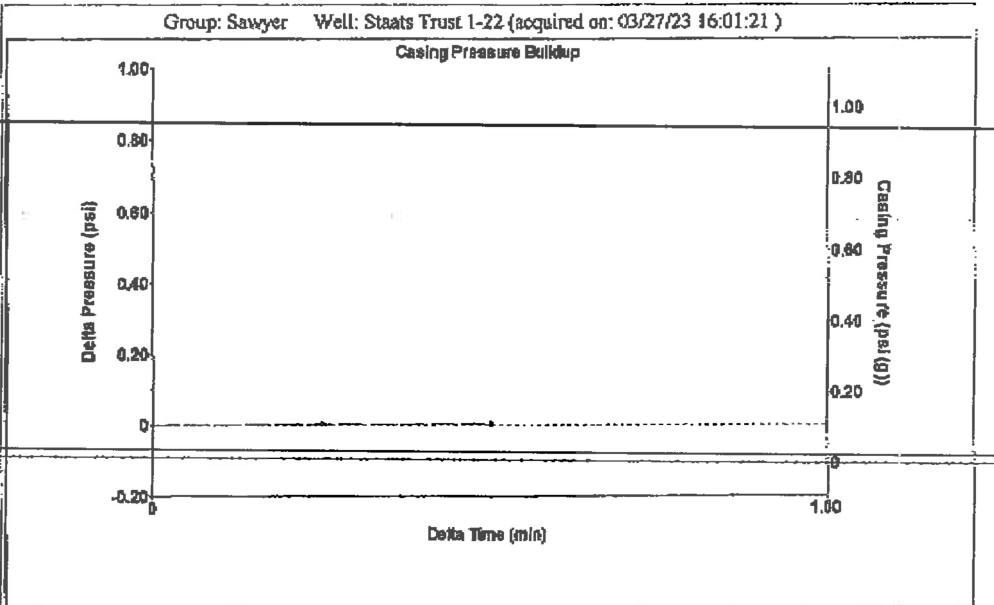
Table with 3 columns: District Office, Address, Phone. Rows for District Office #1, #2, #3, #4.



Filter Type High Pass Automatic Collar Count Yes Time 1.809 sec
 Manual Acoustic Velo 935.072 ft/s Manual JTS/sec 14.4928 Joints 26.3296 Jts
 Depth 849.39 ft

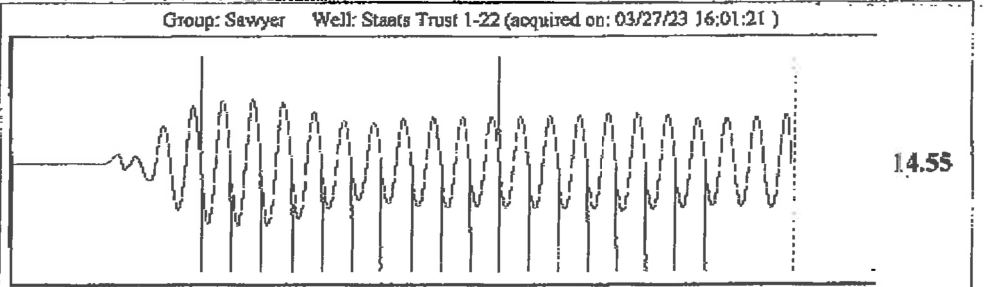


Analysis Method: Automatic



Change in Pressure 0.00 psi PT13440
 Range 0-? psi
 Change in Time 0.50 min

Group: Sawyer Well: Staats Trust 1-22 (acquired on: 03/27/23 16:01:21)			Producing	
Production Current	Potential		Casing Pressure	0.1 psi (g)
Oil -*- BBL/D	-*- BBL/D		Casing Pressure Buildup	0.0 psi
Water -*- BBL/D	-*- BBL/D		Gas/Liquid Interface Pressure	0.50 min
Gas -*- Mscf/D	-*- Mscf/D		Liquid Level Depth	849.39 ft
IPR Method Vogel			Pump Intake Depth	3968.00 ft
PBHP/SBHP -*-			Formation Depth	3822.00 ft
Production Efficiency 0.0				
Oil 40 deg.API				
Water 1.05 Sp.Gr.H2O				
Gas 1.02 Sp.Gr.AIR				
Acoustic Velocity 939.075 ft/s				



Formation Submergence	1018.8 psi (g)	Pump Intake	1018.8 psi (g)
Total Gaseous Liquid Column HT (TVD)	3119 ft	Producing BHP	974.6 psi (g)
Equivalent Gas Free Liquid HT (TVD)	3119 ft	Static BHP	0.0 psi (g)
Acoustic Test			

Acoustic Velocity	939.075 ft/s	Joints counted	17
Joints Per Second	14.5548 jts/sec	Joints to liquid level	26.3296
Depth to liquid level	849.394 ft	Filter Width	12.4928 16.4928
Automatic Collar Count	Yes	Time to 1st Collar	0.436 1.604

March 30, 2023

Loveness Mpanje
F. G. Holl Company L.L.C.
9431 E CENTRAL STE 100
WICHITA, KS 67206-2563

Re: Temporary Abandonment
API 15-007-23012-00-00
STAATS TRUST 1-22
NW/4 Sec.22-30S-14W
Barber County, Kansas

Dear Loveness Mpanje:

"Your temporary abandonment (TA) application for the well listed above has been approved. In accordance with K.A.R. 82-3-111 the TA status of this well will expire 03/30/2024.

- * If you return this well to service or plug it, please notify the District Office.
- * If you sell this well you are required to file a Transfer of Operator form, T-1.
- * If the well will remain temporarily abandoned, you must submit a new TA application, CP-111, before 03/30/2024.

You may contact me at the number above if you have questions.

Very truly yours,

Michael Maier"