

KANSAS CORPORATION COMMISSION
OIL & GAS CONSERVATION DIVISION

TEMPORARY ABANDONMENT WELL APPLICATION

OPERATOR: License#
Name:
Address 1:
Address 2:
City: State: Zip:
Contact Person:
Phone:
Contact Person Email:
Field Contact Person:
Field Contact Person Phone:

API No. 15-
Spot Description:
Sec. Twp. S. R.
GPS Location: Lat: Long:
Datum: NAD27 NAD83 WGS84
County: Elevation:
Lease Name: Well #:
Well Type: Oil Gas OG WSW Other:
SWD Permit #: ENHR Permit #:
Gas Storage Permit #:
Spud Date: Date Shut-In:

Table with 7 columns: Conductor, Surface, Production, Intermediate, Liner, Tubing. Rows include Size, Setting Depth, Amount of Cement, Top of Cement, Bottom of Cement.

Casing Fluid Level from Surface: How Determined? Date:
Casing Squeeze(s): to w / sacks of cement, to w / sacks of cement. Date:
Do you have a valid Oil & Gas Lease? Yes No
Depth and Type: Junk in Hole at Tools in Hole at Casing Leaks: Yes No Depth of casing leak(s):
Type Completion: ALT. I ALT. II Depth of: DV Tool: w / sacks of cement Port Collar: w / sack of cement
Packer Type: Size: Inch Set at: Feet
Total Depth: Plug Back Depth: Plug Back Method:

Geological Data:

Table with 4 columns: Formation Name, Formation Top, Formation Base, Completion Information. Rows 1 and 2.

UNDER PENALTY OF PERJURY I HEREBY ATTEST THAT THE INFORMATION CONTAINED HEREIN IS TRUE AND CORRECT TO THE BEST OF MY KNOWLEDGE

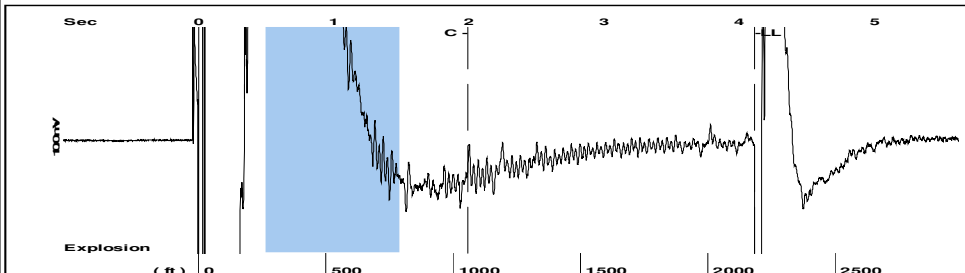
Submitted Electronically

Do NOT Write in This Space - KCC USE ONLY
Date Tested: Results: Date Plugged: Date Repaired: Date Put Back in Service:
Review Completed by: Comments:
TA Approved: Yes Denied Date:

Mail to the Appropriate KCC Conservation Office:

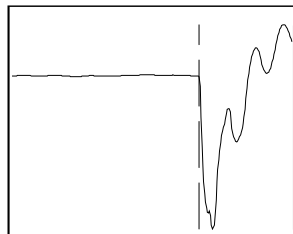
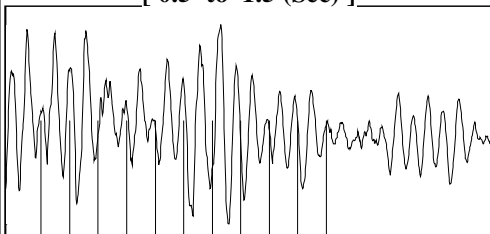
Table with 3 columns: District Office, Address, Phone. Rows for District Office #1, #2, #3, #4.

Group: Novy Oil & Gas Well: CONRAD (acquired on: 05/12/22 12:52:01)



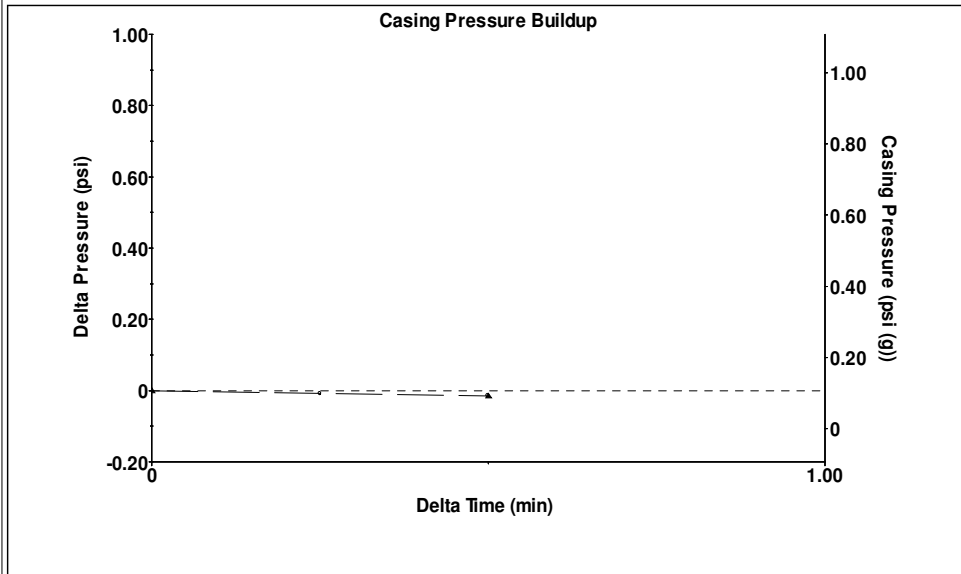
Filter Type High Pass Automatic Collar Count Yes Time 4.116 sec
 Manual Acoustic Velox1081.91 ft/s Manual JTS/sec 17.0648 Joints 68.9169 Jts
 Depth 2184.66 ft

[0.5 to 1.5 (Sec)]



Analysis Method: Automatic

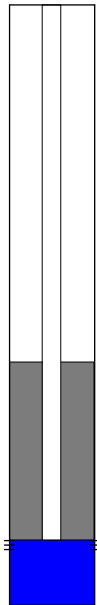
Group: Novy Oil & Gas Well: CONRAD (acquired on: 05/12/22 12:52:01)



Change in Pressure -0.02 psi PT15262
 Change in Time 0.50 min Range 0 - ? psi

Group: Novy Oil & Gas Well: CONRAD (acquired on: 05/12/22 12:52:01)

Production	Potential	Casing Pressure
Oil - * -	0.0 BBL/D	0.1 psi (g)
Water - * -	0.0 BBL/D	Casing Pressure Buildup
Gas - * -	0.0 Mscf/D	-0.016 psi
		0.50 min
IPR Method	Vogel	Gas/Liquid Interface Pressure
PBHP/SBHP	0.41	1.2 psi (g)
Production Efficiency	78.4	
Liquid Level Depth		
Oil 40 deg.API		2184.66 ft
Water 1.05 Sp.Gr.H2O		
Gas 0.92 Sp.Gr.AIR		
Pump Intake Depth		
Acoustic Velocity 1061.55 ft/s		3500.00 ft
		Formation Depth
		3531.00 ft



Producing

Annular Gas Flow 0 Mscf/D

% Liquid 100 %

Liquid Stream

Below Tubing

Oil 0 %

Water 100 %

Liquid Below Tubing

100 %

Pump Intake

445.5 psi (g)

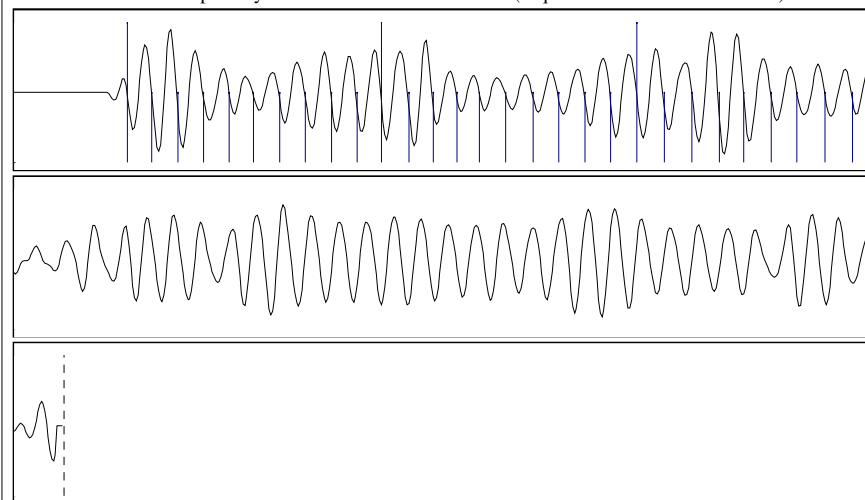
Producing BHP

459.6 psi (g)

Static BHP

1144.0 psi (g)

Group: Novy Oil & Gas Well: CONRAD (acquired on: 05/12/22 12:52:01)



16.74

Acoustic Velocity	1061.55 ft/s	Joints counted	29
Joints Per Second	16.7436 jts/sec	Joints to liquid level	68.9169
Depth to liquid level	2184.66 ft	Filter Width	15.0648 19.0648
Automatic Collar Count	Yes	Time to 1st Collar	0.264 1.996

Conservation Division
District Office No. 2
3450 N. Rock Road
Building 600, Suite 601
Wichita, KS 67226



Phone: 316-337-7400
Fax: 316-630-4005
<http://kcc.ks.gov/>

Dwight D. Keen, Chair
Susan K. Duffy, Commissioner
Andrew J. French, Commissioner

Laura Kelly, Governor

May 16, 2022

Kirk Glenn
Novy Oil & Gas, Inc.
PO BOX 559
GODDARD, KS 67052-0559

Re: Temporary Abandonment
API 15-155-21484-00-00
CONRAD 1
NW/4 Sec.22-23S-10W
Reno County, Kansas

Dear Kirk Glenn:

"Your temporary abandonment (TA) application for the well listed above has been approved. In accordance with K.A.R. 82-3-111 the TA status of this well will expire 05/16/2023.

- * If you return this well to service or plug it, please notify the District Office.
- * If you sell this well you are required to file a Transfer of Operator form, T-1.
- * If the well will remain temporarily abandoned, you must submit a new TA application, CP-111, before 05/16/2023.

You may contact me at the number above if you have questions.

Very truly yours,

Virgil Clothier"