

KANSAS CORPORATION COMMISSION
OIL & GAS CONSERVATION DIVISION

TEMPORARY ABANDONMENT WELL APPLICATION

OPERATOR: License#
Name:
Address 1:
Address 2:
City: State: Zip:
Contact Person:
Phone:
Contact Person Email:
Field Contact Person:
Field Contact Person Phone:

API No. 15-
Spot Description:
Sec. Twp. S. R.
GPS Location: Lat: Long:
Datum: NAD27 NAD83 WGS84
County: Elevation:
Lease Name: Well #:
Well Type: Oil Gas OG WSW Other:
SWD Permit #: ENHR Permit #:
Gas Storage Permit #:
Spud Date: Date Shut-In:

Table with 7 columns: Conductor, Surface, Production, Intermediate, Liner, Tubing. Rows include Size, Setting Depth, Amount of Cement, Top of Cement, Bottom of Cement.

Casing Fluid Level from Surface: How Determined? Date:
Casing Squeeze(s): to w / sacks of cement, to w / sacks of cement. Date:
Do you have a valid Oil & Gas Lease? Yes No
Depth and Type: Junk in Hole at Tools in Hole at Casing Leaks: Yes No Depth of casing leak(s):
Type Completion: ALT. I ALT. II Depth of: DV Tool: w / sacks of cement Port Collar: w / sack of cement
Packer Type: Size: Inch Set at: Feet
Total Depth: Plug Back Depth: Plug Back Method:

Geological Date:

Table with 4 columns: Formation Name, Formation Top, Formation Base, Completion Information. Rows 1 and 2.

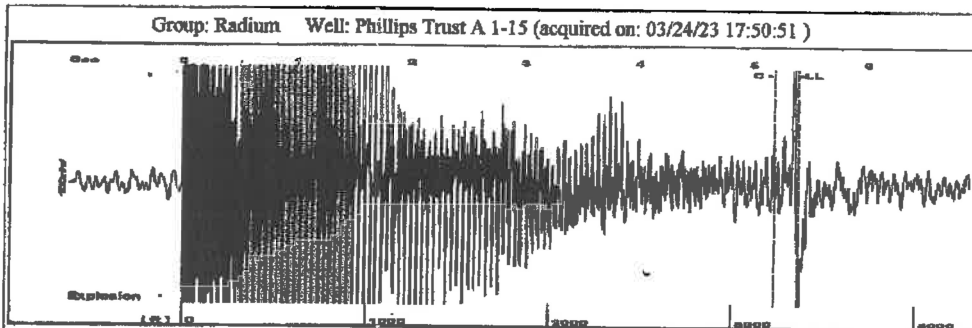
UNDER PENALTY OF PERJURY I HEREBY ATTEST THAT THE INFORMATION CONTAINED HEREIN IS TRUE AND CORRECT TO THE BEST OF MY KNOWLEDGE

Submitted Electronically

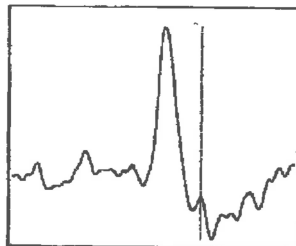
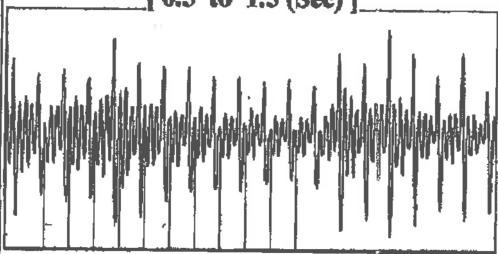
Do NOT Write in This Space - KCC USE ONLY
Date Tested: Results: Date Plugged: Date Repaired: Date Put Back in Service:
Review Completed by: Comments:
TA Approved: Yes Denied Date:

Mail to the Appropriate KCC Conservation Office:

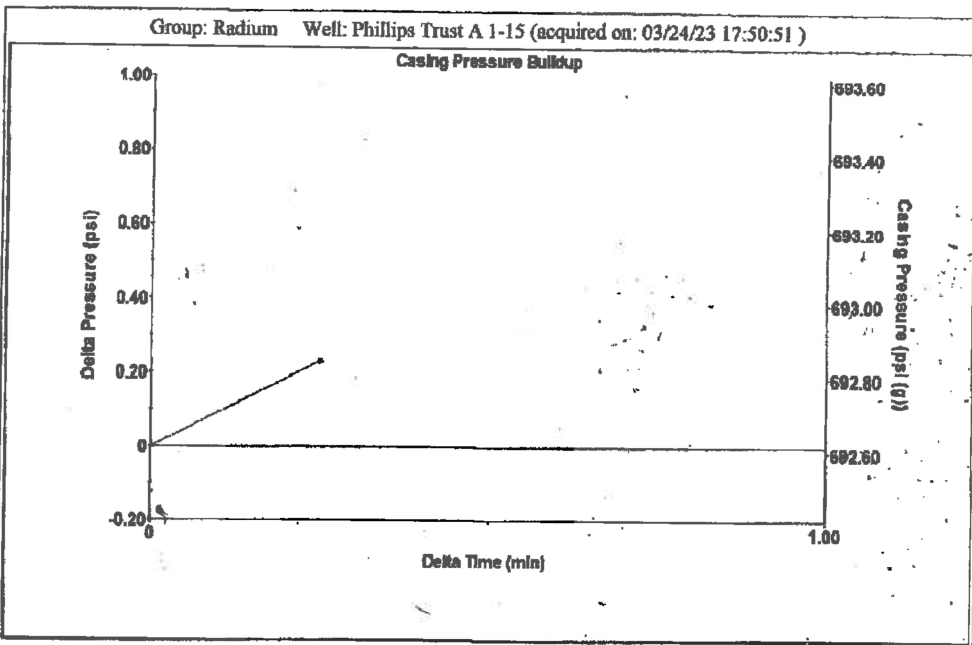
Table with 2 columns: Office Address, Phone. Rows for District Office #1, #2, #3, #4.



Filter Type High Pass Automatic Collar Count Yes Time 5.392 sec
 Manual Acoustic Velo 1233.46 ft/s Manual JTS/sec 19.4553 Joints 105.961 Jts
 Depth 3358.97 ft



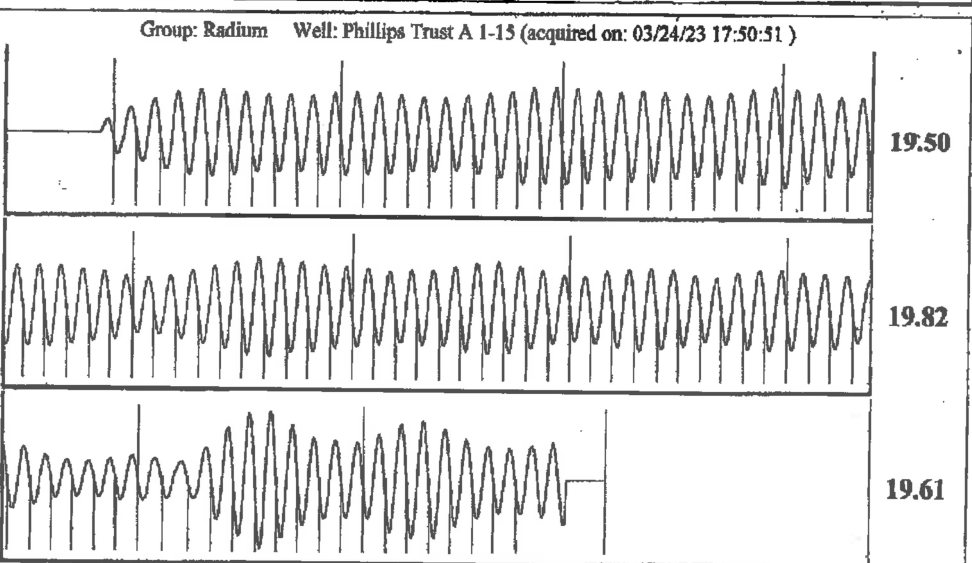
Analysis Method: Automatic



Change in Pressure 0.23 psi PT13440
 Range -0.7 psi
 Change in Time 0.25 min

Group: Radium Well: Phillips Trust A 1-15 (acquired on: 03/24/23 17:50:51)

Production Current	Potential	Casing Pressure	Producing
Oil - * -	- * - BBL/D	692.6 psi (g)	
Water - * -	- * - BBL/D	Casing Pressure Buildup	
Gas - * -	- * - Mscf/D	0.2 psi	Annular Gas Flow
		0.25 min	29 Mscf/D
IPR Method	Vogel	Gas/Liquid Interface Pressure	% Liquid
PBHP/SBHP	- * -	756.5 psi (g)	35 %
Production Efficiency	0.0		
Oil 40 deg API		Liquid Level Depth	
Water 1.05 Sp.Gr.H2O		3358.97 ft	
Gas 0.69 Sp.Gr.AIR		Pump Intake Depth	
		- * - ft	
Acoustic Velocity	1245.91 ft/s	Formation Depth	
		3510.00 ft	
Formation Submergence		Pump Intake	
Total Gaseous Liquid Column HT (TVD)	151 ft	- * - psi (g)	
Equivalent Gas Free Liquid HT (TVD)	52 ft	Producing BHP	
		782.0 psi (g)	
Acoustic Test		Static BHP	
		- * - psi (g)	



Acoustic Velocity 1245.91 ft/s Joints counted 97
 Joints Per Second 19.6515 jts/sec Joints to liquid level 105.961
 Depth to liquid level 3358.97 ft Filter Width 17.4553
 Automatic Collar Count Yes Time to 1st Collar 0.248 5.184

April 11, 2023

Loveness Mpanje
F. G. Holl Company L.L.C.
9431 E CENTRAL STE 100
WICHITA, KS 67206-2563

Re: Temporary Abandonment
API 15-009-25394-00-00
PHILLIP TRUST A 1-15
NE/4 Sec.15-20S-14W
Barton County, Kansas

Dear Loveness Mpanje:

"Your temporary abandonment (TA) application for the well listed above has been approved. In accordance with K.A.R. 82-3-111 the TA status of this well will expire 04/11/2024.

- * If you return this well to service or plug it, please notify the District Office.
- * If you sell this well you are required to file a Transfer of Operator form, T-1.
- * If the well will remain temporarily abandoned, you must submit a new TA application, CP-111, before 04/11/2024.

You may contact me at the number above if you have questions.

Very truly yours,

RICHARD WILLIAMS"