

KANSAS CORPORATION COMMISSION
OIL & GAS CONSERVATION DIVISION

TEMPORARY ABANDONMENT WELL APPLICATION

OPERATOR: License#
Name:
Address 1:
Address 2:
City: State: Zip:
Contact Person:
Phone:
Contact Person Email:
Field Contact Person:
Field Contact Person Phone:

API No. 15-
Spot Description:
Sec. Twp. S. R.
GPS Location: Lat: Long:
Datum: NAD27 NAD83 WGS84
County: Elevation:
Lease Name: Well #:
Well Type: Oil Gas OG WSW Other:
SWD Permit #: ENHR Permit #:
Gas Storage Permit #:
Spud Date: Date Shut-In:

Table with 7 columns: Conductor, Surface, Production, Intermediate, Liner, Tubing. Rows include Size, Setting Depth, Amount of Cement, Top of Cement, Bottom of Cement.

Casing Fluid Level from Surface: How Determined? Date:
Casing Squeeze(s): to w / sacks of cement, to w / sacks of cement. Date:
Do you have a valid Oil & Gas Lease? Yes No
Depth and Type: Junk in Hole at Tools in Hole at Casing Leaks: Yes No Depth of casing leak(s):
Type Completion: ALT. I ALT. II Depth of: DV Tool: w / sacks of cement Port Collar: w / sack of cement
Packer Type: Size: Inch Set at: Feet
Total Depth: Plug Back Depth: Plug Back Method:

Geological Data:

Table with 4 columns: Formation Name, Formation Top, Formation Base, Completion Information. Rows 1 and 2.

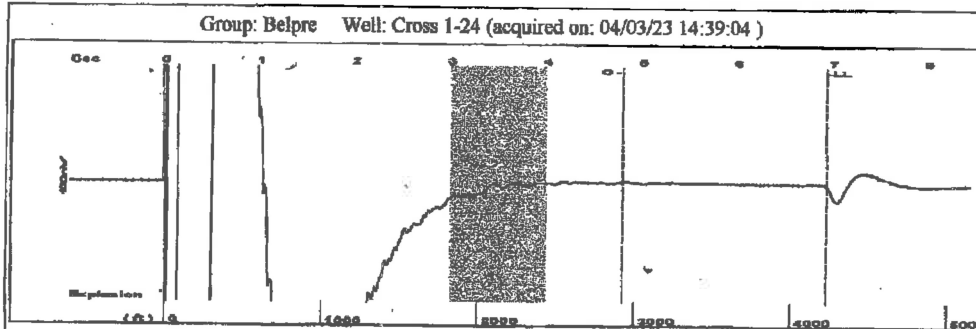
UNDER PENALTY OF PERJURY I HEREBY ATTEST THAT THE INFORMATION CONTAINED HEREIN IS TRUE AND CORRECT TO THE BEST OF MY KNOWLEDGE

Submitted Electronically

Do NOT Write in This Space - KCC USE ONLY
Date Tested: Results: Date Plugged: Date Repaired: Date Put Back in Service:
Review Completed by: Comments:
TA Approved: Yes Denied Date:

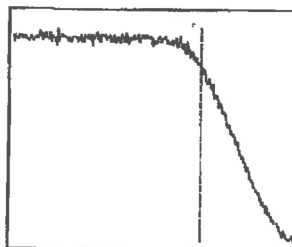
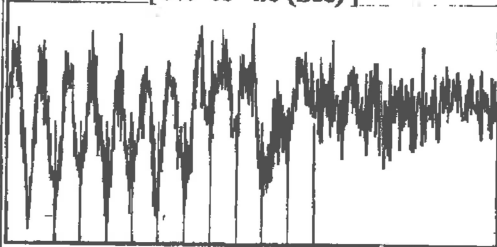
Mail to the Appropriate KCC Conservation Office:

Table with 3 columns: District Office #, Address, Phone. Rows 1-4.

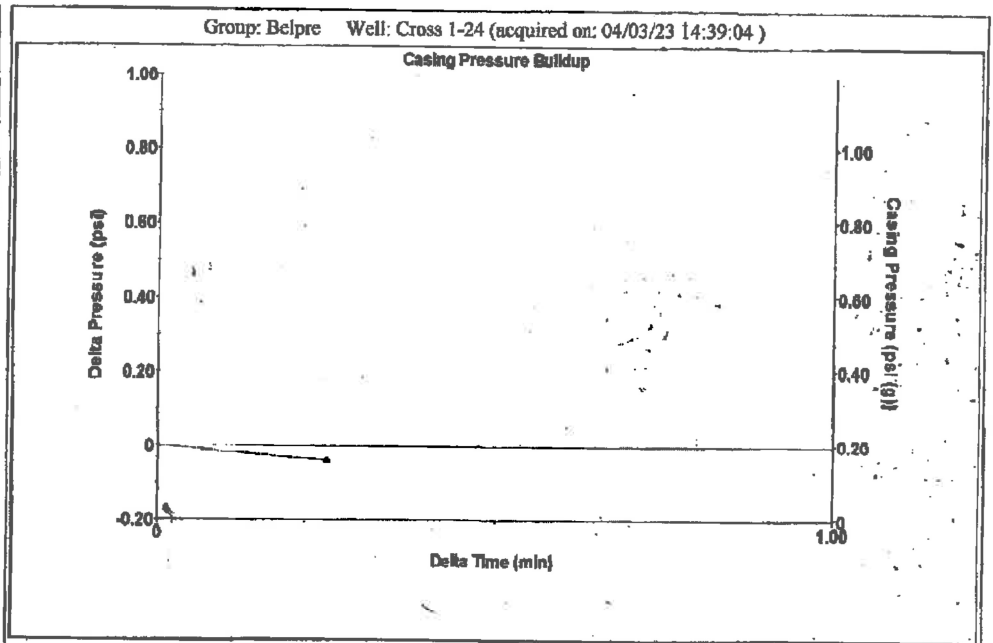


Filter Type High Pass Automatic Collar Count Yes Time 6.929 sec  
 Manual Acoustic Velo 1186.01 ft/s Manual JTS/sec 18.9036 Joints 134.782 Jts  
 Depth 4228.10 ft

[ 3.0 to 4.0 (Sec) ]



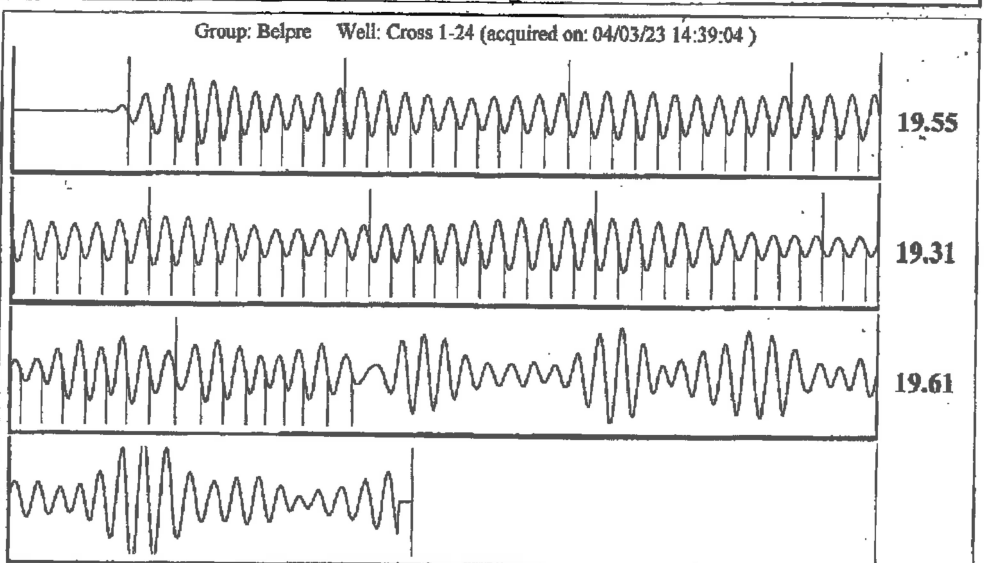
Analysis Method: Automatic



Change in Pressure -0.04 psi PT13440  
 Range -0.7 psi  
 Change in Time 0.25 min

Group: Belpre Well: Cross 1-24 (acquired on: 04/03/23 14:39:04)

Production Current	Potential	Casing Pressure	Producing
Oil - * -	BBL/D	0.2 psi (g)	
Water - * -	BBL/D	Casing Pressure Buildup	
Gas - * -	Mscf/D	-0.0 psi	
		0.25 min	Annular Gas Flow
IPR Method	Vogel	Gas/Liquid Interface Pressure	0 Mscf/D
PBHP/SBHP	- * -	1.9 psi (g)	% Liquid
Production Efficiency	0.0		100 %
Oil 40 deg.API		Liquid Level Depth	
Water 1.05 Sp.Gr.H2O		4228.10 ft	
Gas 0.78 Sp.Gr.AIR		Pump Intake Depth	
		4424.00 ft	
Acoustic Velocity 1220.41 ft/s		Formation Depth	
		4423.00 ft	
Formation Submergence			Pump Intake
Total Gaseous Liquid Column HT (TVD)	196 ft		68.5 psi (g)
Equivalent Gas Free Liquid HT (TVD)	196 ft		Producing BHP
			63.1 psi (g)
Acoustic Test			Static BHP
			- * - psi (g)



Acoustic Velocity 1220.41 ft/s Joints counted 88  
 Joints Per Second 19.4518 jts/sec Joints to liquid level 134.782  
 Depth to liquid level 4228.1 ft Filter Width 16.9036  
 Automatic Collar Count Yes Time to 1st Collar 0.264 4.788

April 11, 2023

Loveness Mpanje  
F. G. Holl Company L.L.C.  
9431 E CENTRAL STE 100  
WICHITA, KS 67206-2563

Re: Temporary Abandonment  
API 15-047-20321-00-00  
CROSS 1  
NE/4 Sec.24-24S-18W  
Edwards County, Kansas

Dear Loveness Mpanje:

"Your temporary abandonment (TA) application for the well listed above has been approved. In accordance with K.A.R. 82-3-111 the TA status of this well will expire 04/11/2024.

- \* If you return this well to service or plug it, please notify the District Office.
- \* If you sell this well you are required to file a Transfer of Operator form, T-1.
- \* If the well will remain temporarily abandoned, you must submit a new TA application, CP-111, before 04/11/2024.

You may contact me at the number above if you have questions.

Very truly yours,

Michael Maier"