

KANSAS CORPORATION COMMISSION
OIL & GAS CONSERVATION DIVISION

TEMPORARY ABANDONMENT WELL APPLICATION

OPERATOR: License#
Name:
Address 1:
Address 2:
City: State: Zip:
Contact Person:
Phone:
Contact Person Email:
Field Contact Person:
Field Contact Person Phone:

API No. 15-
Spot Description:
Sec. Twp. S. R.
GPS Location: Lat: Long:
Datum: NAD27 NAD83 WGS84
County: Elevation:
Lease Name: Well #:
Well Type: Oil Gas OG WSW Other:
SWD Permit #: ENHR Permit #:
Gas Storage Permit #:
Spud Date: Date Shut-In:

Table with 7 columns: Conductor, Surface, Production, Intermediate, Liner, Tubing. Rows include Size, Setting Depth, Amount of Cement, Top of Cement, Bottom of Cement.

Casing Fluid Level from Surface: How Determined? Date:
Casing Squeeze(s): to w / sacks of cement, to w / sacks of cement. Date:
Do you have a valid Oil & Gas Lease? Yes No
Depth and Type: Junk in Hole at Tools in Hole at Casing Leaks: Yes No Depth of casing leak(s):
Type Completion: ALT. I ALT. II Depth of: DV Tool: w / sacks of cement Port Collar: w / sack of cement
Packer Type: Size: Inch Set at: Feet
Total Depth: Plug Back Depth: Plug Back Method:

Geological Data:

Table with 4 columns: Formation Name, Formation Top, Formation Base, Completion Information. Rows 1 and 2.

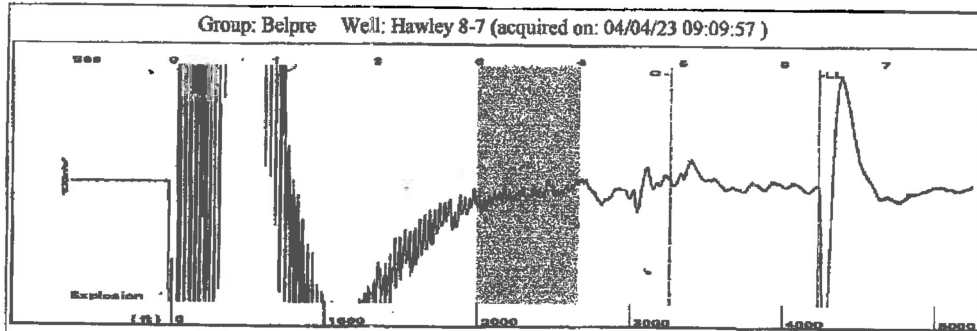
UNDER PENALTY OF PERJURY I HEREBY ATTEST THAT THE INFORMATION CONTAINED HEREIN IS TRUE AND CORRECT TO THE BEST OF MY KNOWLEDGE

Submitted Electronically

Do NOT Write in This Space - KCC USE ONLY
Date Tested: Results: Date Plugged: Date Repaired: Date Put Back in Service:
Review Completed by: Comments:
TA Approved: Yes Denied Date:

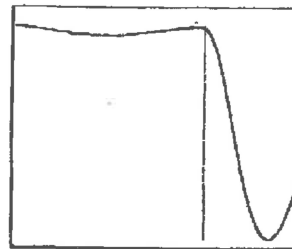
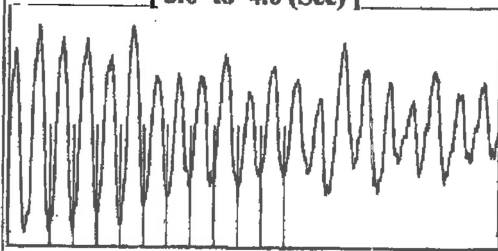
Mail to the Appropriate KCC Conservation Office:

Table with 3 columns: District Office, Address, Phone. Rows for District Office #1, #2, #3, #4.

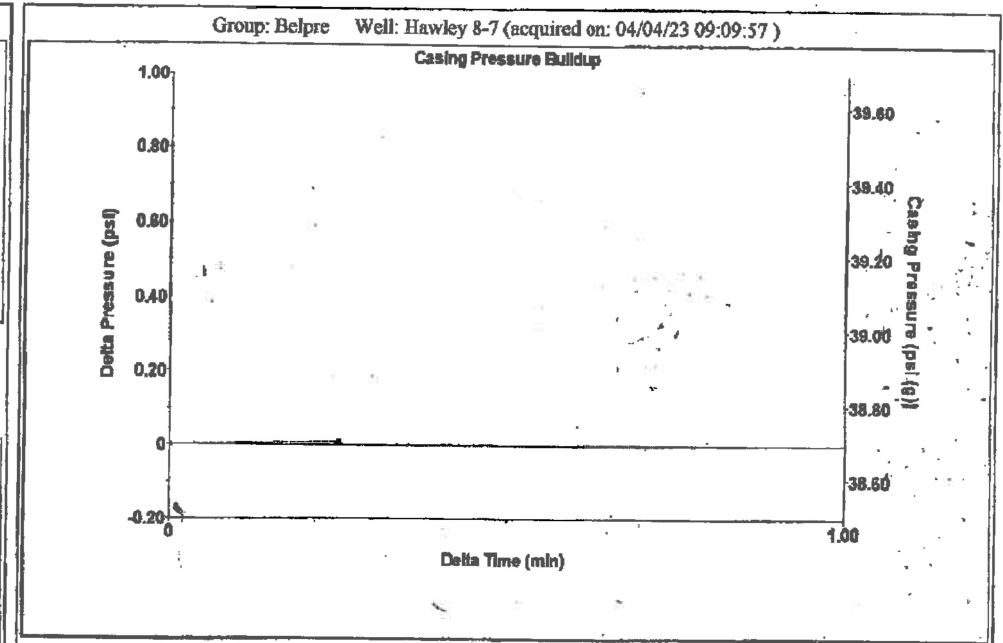


Filter Type High Pass Automatic Collar Count Yes Time 6.345 sec
 Manual Acoustic Velocity 1334.73 ft/s Manual JTS/sec 20.9205 Joints 132.643 Jts
 Depth 4231.32 ft

[3.0 to 4.0 (Sec)]



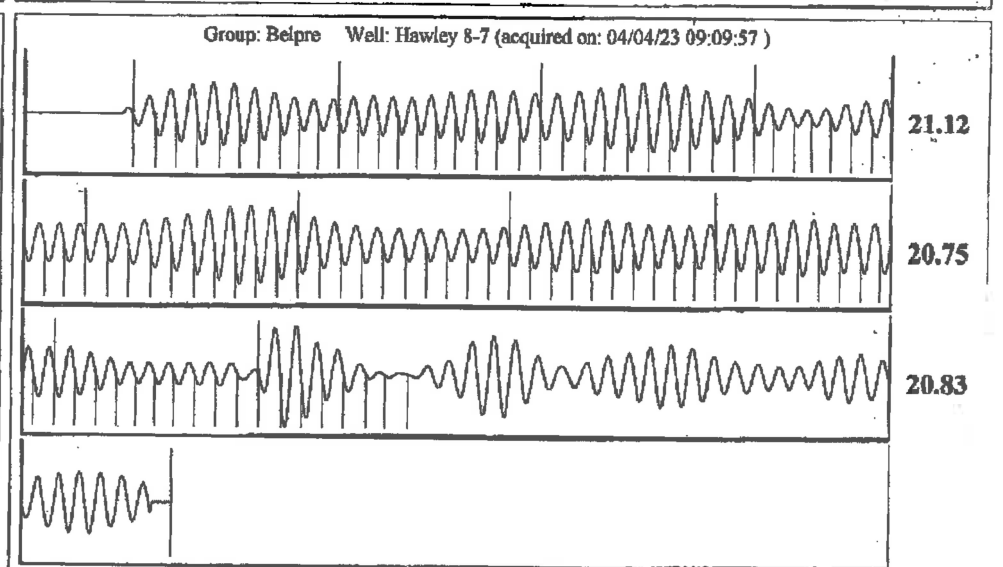
Analysis Method: Automatic



Change in Pressure 0.01 psi PT13440
 Change in Time 0.25 min Range -0 - ? psi

Group: Belpre Well: Hawley 8-7 (acquired on: 04/04/23 09:09:57)

Production Current	Potential	Casing Pressure	Producing
Oil -*- BBL/D	-*- BBL/D	38.7 psi (g)	
Water -*- BBL/D	-*- BBL/D	Casing Pressure Buildup	
Gas -*- Mscf/D	-*- Mscf/D	0.0 psi	
		0.25 min	
IPR Method Vogel		Gas/Liquid Interface Pressure	Annular Gas Flow 1 Mscf/D
PBHP/SBHP -*-		44.0 psi (g)	% Liquid 96 %
Production Efficiency 0.0		Liquid Level Depth	
Oil 40 deg.API		4231.32 ft	
Water 1.05 Sp.Gr.H2O		Pump Intake Depth	
Gas 0.68 Sp.Gr.AIR		4243.00 ft	
Acoustic Velocity 1333.75 ft/s		Formation Depth	
		4259.00 ft	
Formation Submergence		Pump Intake	
Total Gaseous Liquid Column HT (TVD) 12 ft		47.8 psi (g)	
Equivalent Gas Free Liquid HT (TVD) 11 ft		Producing BHP	
Acoustic Test		54.9 psi (g)	
		Static BHP	
		-* psi (g)	



Acoustic Velocity 1333.75 ft/s Joints counted 97
 Joints Per Second 20.9052 jts/sec Joints to liquid level 132.643
 Depth to liquid level 4231.32 ft Filter Width 18.9205 22.9205
 Automatic Collar Count Yes Time to 1st Collar 0.248 4.888

April 11, 2023

Margery L. Nagel
F. G. Holl Company L.L.C.
9431 E CENTRAL STE 100
WICHITA, KS 67206-2563

Re: Temporary Abandonment
API 15-047-21111-00-00
HAWLEY 8-7
NW/4 Sec.07-24S-16W
Edwards County, Kansas

Dear Margery L. Nagel:

"Your temporary abandonment (TA) application for the well listed above has been approved. In accordance with K.A.R. 82-3-111 the TA status of this well will expire 04/11/2024.

- * If you return this well to service or plug it, please notify the District Office.
- * If you sell this well you are required to file a Transfer of Operator form, T-1.
- * If the well will remain temporarily abandoned, you must submit a new TA application, CP-111, before 04/11/2024.

You may contact me at the number above if you have questions.

Very truly yours,

Michael Maier"