

KANSAS CORPORATION COMMISSION  
OIL & GAS CONSERVATION DIVISION

TEMPORARY ABANDONMENT WELL APPLICATION

OPERATOR: License# \_\_\_\_\_  
 Name: \_\_\_\_\_  
 Address 1: \_\_\_\_\_  
 Address 2: \_\_\_\_\_  
 City: \_\_\_\_\_ State: \_\_\_\_\_ Zip: \_\_\_\_\_ + \_\_\_\_\_  
 Contact Person: \_\_\_\_\_  
 Phone: ( \_\_\_\_\_ ) \_\_\_\_\_  
 Contact Person Email: \_\_\_\_\_  
 Field Contact Person: \_\_\_\_\_  
 Field Contact Person Phone: ( \_\_\_\_\_ ) \_\_\_\_\_

API No. 15- \_\_\_\_\_  
 Spot Description: \_\_\_\_\_  
 \_\_\_\_\_ - \_\_\_\_\_ - \_\_\_\_\_ - \_\_\_\_\_ Sec. \_\_\_\_\_ Twp. \_\_\_\_\_ S. R. \_\_\_\_\_  E  W  
 \_\_\_\_\_ feet from  N /  S Line of Section  
 \_\_\_\_\_ feet from  E /  W Line of Section  
 GPS Location: Lat: \_\_\_\_\_, Long: \_\_\_\_\_  
(e.g. xx.xxxxx) (e.g. -xxx.xxxxx)  
 Datum:  NAD27  NAD83  WGS84  
 County: \_\_\_\_\_ Elevation: \_\_\_\_\_  GL  KB  
 Lease Name: \_\_\_\_\_ Well #: \_\_\_\_\_  
 Well Type: (check one)  Oil  Gas  OG  WSW  Other: \_\_\_\_\_  
 SWD Permit #: \_\_\_\_\_  ENHR Permit #: \_\_\_\_\_  
 Gas Storage Permit #: \_\_\_\_\_  
 Spud Date: \_\_\_\_\_ Date Shut-In: \_\_\_\_\_

	Conductor	Surface	Production	Intermediate	Liner	Tubing
Size						
Setting Depth						
Amount of Cement						
Top of Cement						
Bottom of Cement						

Casing Fluid Level from Surface: \_\_\_\_\_ How Determined? \_\_\_\_\_ Date: \_\_\_\_\_  
 Casing Squeeze(s): \_\_\_\_\_ to \_\_\_\_\_ w / \_\_\_\_\_ sacks of cement, \_\_\_\_\_ to \_\_\_\_\_ w / \_\_\_\_\_ sacks of cement. Date: \_\_\_\_\_  
(top) (bottom) (top) (bottom)  
 Do you have a valid Oil & Gas Lease?  Yes  No  
 Depth and Type:  Junk in Hole at \_\_\_\_\_  Tools in Hole at \_\_\_\_\_ Casing Leaks:  Yes  No Depth of casing leak(s): \_\_\_\_\_  
(depth) (depth)  
 Type Completion:  ALT. I  ALT. II Depth of:  DV Tool: \_\_\_\_\_ w / \_\_\_\_\_ sacks of cement  Port Collar: \_\_\_\_\_ w / \_\_\_\_\_ sack of cement  
(depth) (depth)  
 Packer Type: \_\_\_\_\_ Size: \_\_\_\_\_ Inch Set at: \_\_\_\_\_ Feet  
 Total Depth: \_\_\_\_\_ Plug Back Depth: \_\_\_\_\_ Plug Back Method: \_\_\_\_\_

**Geological Data:**

Formation Name	Formation Top	Formation Base	Completion Information
1. _____	At: _____	to _____ Feet	Perforation Interval _____ to _____ Feet or Open Hole Interval _____ to _____ Feet
2. _____	At: _____	to _____ Feet	Perforation Interval _____ to _____ Feet or Open Hole Interval _____ to _____ Feet

UNDER PENALTY OF PERJURY I HEREBY ATTEST THAT THE INFORMATION CONTAINED HEREIN IS TRUE AND CORRECT TO THE BEST OF MY KNOWLEDGE

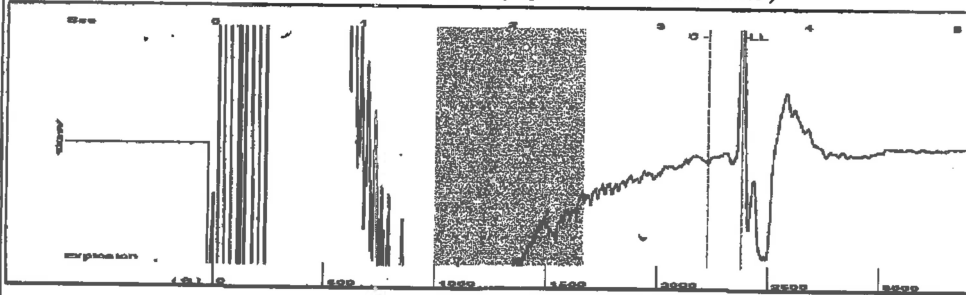
Submitted Electronically

<b>Do NOT Write in This Space - KCC USE ONLY</b>	Date Tested: _____	Results: _____	Date Plugged: _____	Date Repaired: _____	Date Put Back in Service: _____
	Review Completed by: _____ Comments: _____				
TA Approved: <input type="checkbox"/> Yes <input type="checkbox"/> Denied Date: _____					

Mail to the Appropriate KCC Conservation Office:

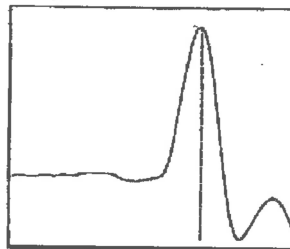
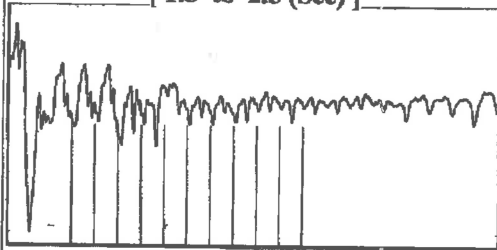
	KCC District Office #1 - 210 E. Frontview, Suite A, Dodge City, KS 67801	Phone 620.682.7933
	KCC District Office #2 - 3450 N. Rock Road, Building 600, Suite 601, Wichita, KS 67226	Phone 316.337.7400
	KCC District Office #3 - 137 E. 21st St., Chanute, KS 66720	Phone 620.902.6450
	KCC District Office #4 - 2301 E. 13th Street, Hays, KS 67601-2651	Phone 785.261.6250

Group: Radium Well: Osborne 1-17 (acquired on: 03/24/23 20:20:41)



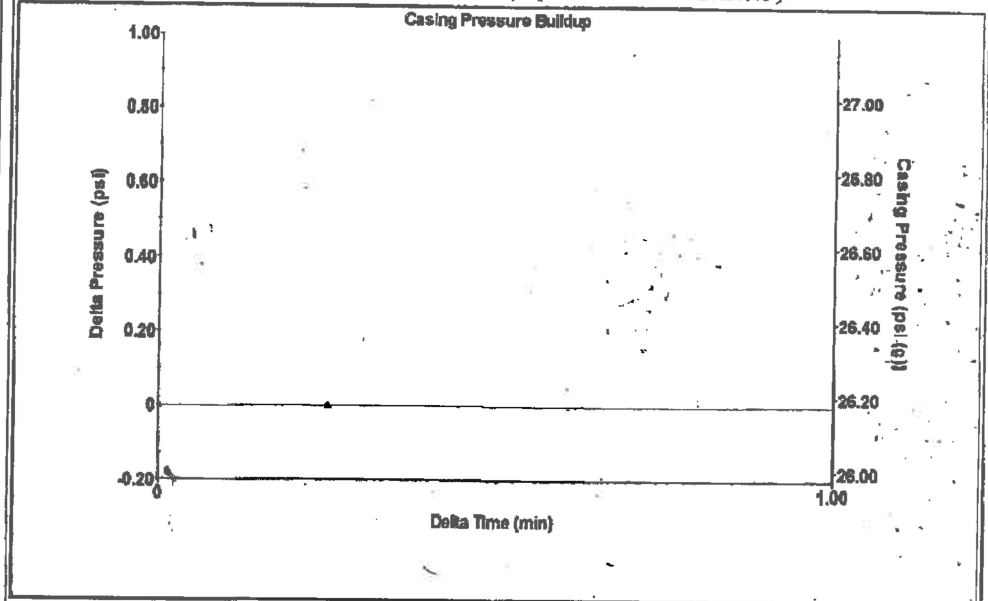
Filter Type High Pass Automatic Collar Count Yes Time 3.563 sec  
 Manual Acoustic Velo 1325.85 ft/s Manual JTS/sec 21.1864 Joints 76.0825 Jts  
 Depth 2380.62 ft

[ 1.5 to 2.5 (Sec) ]



Analysis Method: Automatic

Group: Radium Well: Osborne 1-17 (acquired on: 03/24/23 20:20:41)



Change in Pressure -0.00 psi PT13440  
 Range -0.7 psi  
 Change in Time 0.25 min

Group: Radium Well: Osborne 1-17 (acquired on: 03/24/23 20:20:41)

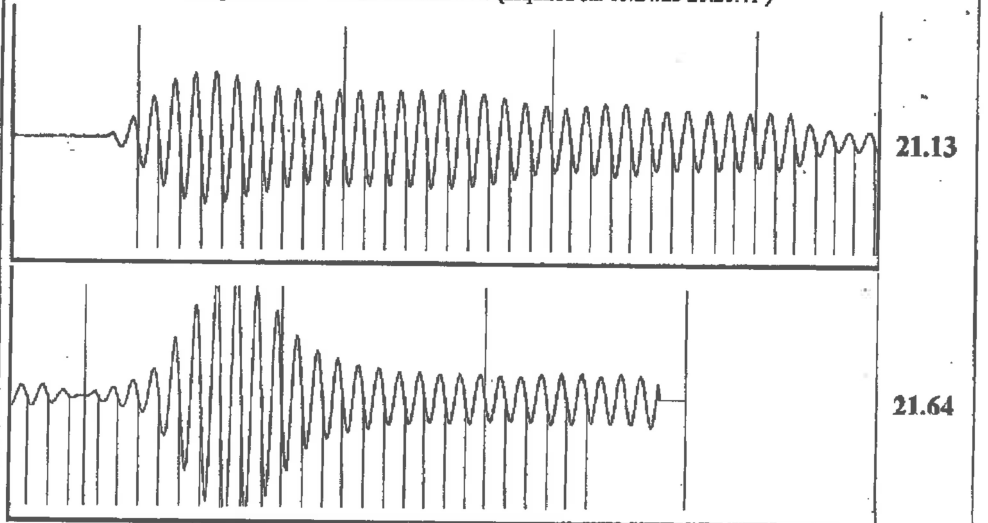
Production Current	Potential	Casing Pressure
Oil -*- BBL/D	-*- BBL/D	26.2 psi (g)
Water -*- BBL/D	-*- BBL/D	Casing Pressure Buildup
Gas -*- Mscf/D	-*? Mscf/D	-0.0 psi
		0.25 min
IPR Method	Vogel	Gas/Liquid Interface Pressure
PBHP/SBHP	-*-	28.4 psi (g)
Production Efficiency	0.0	
Oil 40 deg.API		Liquid Level Depth
Water 1.05 Sp.Gr.H2O		2380.62 ft
Gas 0.68 Sp.Gr.AIR		Pump Intake Depth
		2347.00 ft
Acoustic Velocity	1336.3 ft/s	Formation Depth
		2387.00 ft



Producing  
 Annular Gas Flow 0 Macf/D  
 % Liquid 100 %  
 Pump Intake 28.4 psi (g)  
 Producing BHP 31.3 psi (g)  
 Static BHP -\*- psi (g)

Formation Submergence  
 Total Gaseous Liquid Column HT (TVD) -\*- ft  
 Equivalent Gas Free Liquid HT (TVD) -\*- ft  
 Acoustic Test

Group: Radium Well: Osborne 1-17 (acquired on: 03/24/23 20:20:41)



Acoustic Velocity 1336.3 ft/s Joints counted 65  
 Joints Per Second 21.3535 jts/sec Joints to liquid level 76.0825  
 Depth to liquid level 2380.62 ft Filter Width 19.1864  
 Automatic Collar Count Yes Time to 1st Collar 0.288 3.332

April 11, 2023

Loveness Mpanje  
F. G. Holl Company L.L.C.  
9431 E CENTRAL STE 100  
WICHITA, KS 67206-2563

Re: Temporary Abandonment  
API 15-185-23170-00-00  
OSBORNE 1-17  
NW/4 Sec.17-21S-14W  
Stafford County, Kansas

Dear Loveness Mpanje:

"Your temporary abandonment (TA) application for the well listed above has been approved. In accordance with K.A.R. 82-3-111 the TA status of this well will expire 04/11/2024.

- \* If you return this well to service or plug it, please notify the District Office.
- \* If you sell this well you are required to file a Transfer of Operator form, T-1.
- \* If the well will remain temporarily abandoned, you must submit a new TA application, CP-111, before 04/11/2024.

You may contact me at the number above if you have questions.

Very truly yours,

Michael Maier"