

KANSAS CORPORATION COMMISSION
OIL & GAS CONSERVATION DIVISION

Form must be Typed
Form must be signed

TEMPORARY ABANDONMENT WELL APPLICATION

All blanks must be complete

OPERATOR: License#
Name:
Address 1:
Address 2:
City: State: Zip:
Contact Person:
Phone:
Contact Person Email:
Field Contact Person:
Field Contact Person Phone:

API No. 15-
Spot Description:
Sec. Twp. S. R.
feet from N / S Line of Section
feet from E / W Line of Section
GPS Location: Lat: , Long:
Datum: NAD27 NAD83 WGS84
County: Elevation: GL KB
Lease Name: Well #:
Well Type: Oil Gas OG WSW Other:
SWD Permit #: ENHR Permit #:
Gas Storage Permit #:
Spud Date: Date Shut-In:

Table with 7 columns: Conductor, Surface, Production, Intermediate, Liner, Tubing. Rows include Size, Setting Depth, Amount of Cement, Top of Cement, Bottom of Cement.

Casing Fluid Level from Surface: How Determined? Date:
Casing Squeeze(s): to w / sacks of cement, to w / sacks of cement. Date:
Do you have a valid Oil & Gas Lease? Yes No
Depth and Type: Junk in Hole at Tools in Hole at Casing Leaks: Yes No Depth of casing leak(s):
Type Completion: ALT. I ALT. II Depth of: DV Tool: w / sacks of cement Port Collar: w / sack of cement
Packer Type: Size: Inch Set at: Feet
Total Depth: Plug Back Depth: Plug Back Method:

Geological Date:

Table with 4 columns: Formation Name, Formation Top, Formation Base, Completion Information. Rows 1 and 2.

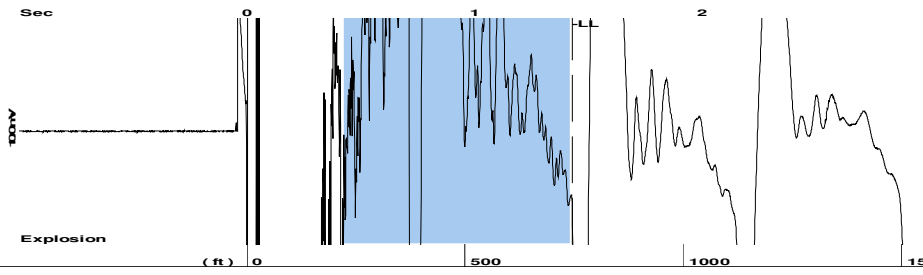
UNDER PENALTY OF PERJURY I HEREBY ATTEST THAT THE INFORMATION CONTAINED HEREIN IS TRUE AND CORRECT TO THE BEST OF MY KNOWLEDGE

Submitted Electronically

Form with fields: Do NOT Write in This Space - KCC USE ONLY, Date Tested, Results, Date Plugged, Date Repaired, Date Put Back in Service, Review Completed by, Comments, TA Approved: Yes Denied, Date.

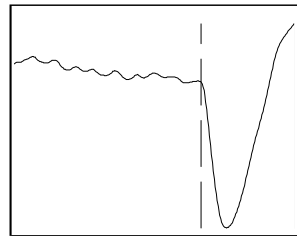
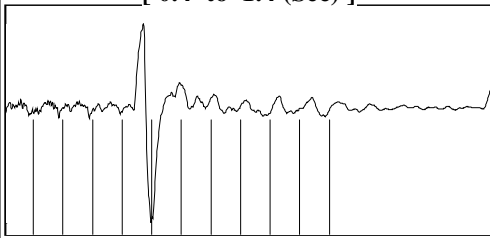
Mail to the Appropriate KCC Conservation Office:

Table with 3 columns: District Office (1-4), Address, Phone number.



Filter Type High Pass Automatic Collar Count Yes Time 1.429 sec
 Manual Acoustic Velo 1042.76 ft/s Manual JTS/sec 16.4474 Joints 23.5033 Jts
 Depth 745.05 ft

[0.4 to 1.4 (Sec)]



Analysis Method: Automatic

NO PRESSURE DATA AVAILABLE

Change in Pressure 1011.67 psi PT15262
 Range 0 - ? psi
 Change in Time 2.00 min

Production Current Potential
 Oil - * - 0.0 BBL/D
 Water - * - 0.0 BBL/D
 Gas - * - 0.0 Mscf/D
 IPR Method Vogel
 PBHP/SBHP 0.21
 Production Efficiency 92.2

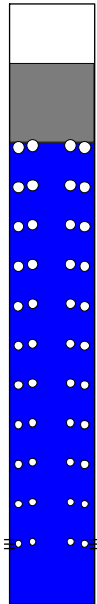
Oil 40 deg.API
 Water 1.05 Sp.Gr.H2O
 Gas 0.92 Sp.Gr.AIR

Acoustic Velocity 1042.76 ft/s

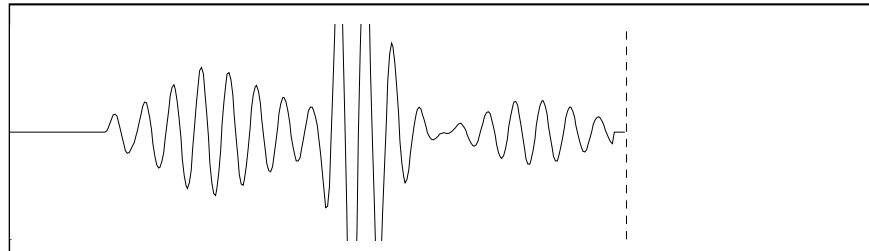
Formation Submergence
 Total Gaseous Liquid Column HT (TVD) 3803 ft
 Equivalent Gas Free Liquid HT (TVD) 711 ft

Acoustic Test

Casing Pressure -0.6 psi (g)
 Casing Pressure Buildup 1011.7 psi
 2.00 min
 Gas/Liquid Interface Pressure -0.2 psi (g)
 Liquid Level Depth 745.05 ft
 Pump Intake Depth - * - ft
 Formation Depth 4548.00 ft



Producing
 Annular Gas Flow 16553 Mscf/D
 % Liquid 19 %
 Pump Intake - * - psi (g)
 Producing BHP 338.7 psi (g)
 Static BHP 1659.2 psi (g)



Acoustic Velocity - * - ft/s Joints counted 1
 Joints Per Second - * - jts/sec Joints to liquid level - * -
 Depth to liquid level - * - ft Filter Width 14.4474 18.4474
 Automatic Collar Count Yes Time to 1st Collar - * - - * -

April 13, 2023

Micheal Novy
Novy Oil & Gas, Inc.
PO BOX 559
GODDARD, KS 67052-0559

Re: Temporary Abandonment
API 15-047-20310-00-00
ROENBAUGH 2-27
NE/4 Sec.27-26S-17W
Edwards County, Kansas

Dear Micheal Novy:

"Your temporary abandonment (TA) application for the well listed above has been approved. In accordance with K.A.R. 82-3-111 the TA status of this well will expire 04/13/2024.

- * If you return this well to service or plug it, please notify the District Office.
- * If you sell this well you are required to file a Transfer of Operator form, T-1.
- * If the well will remain temporarily abandoned, you must submit a new TA application, CP-111, before 04/13/2024.

You may contact me at the number above if you have questions.

Very truly yours,

Michael Maier"