

KANSAS CORPORATION COMMISSION
OIL & GAS CONSERVATION DIVISION

TEMPORARY ABANDONMENT WELL APPLICATION

OPERATOR: License#
Name:
Address 1:
Address 2:
City: State: Zip:
Contact Person:
Phone:
Contact Person Email:
Field Contact Person:
Field Contact Person Phone:

API No. 15-
Spot Description:
Sec. Twp. S. R.
feet from N / S Line of Section
feet from E / W Line of Section
GPS Location: Lat: , Long:
Datum: NAD27 NAD83 WGS84
County: Elevation: GL KB
Lease Name: Well #:
Well Type: (check one) Oil Gas OG WSW Other:
SWD Permit #: ENHR Permit #:
Gas Storage Permit #:
Spud Date: Date Shut-In:

Table with 7 columns: Conductor, Surface, Production, Intermediate, Liner, Tubing. Rows include Size, Setting Depth, Amount of Cement, Top of Cement, Bottom of Cement.

Casing Fluid Level from Surface: How Determined? Date:
Casing Squeeze(s): to w / sacks of cement, to w / sacks of cement. Date:
Do you have a valid Oil & Gas Lease? Yes No
Depth and Type: Junk in Hole at Tools in Hole at Casing Leaks: Yes No Depth of casing leak(s):
Type Completion: ALT. I ALT. II Depth of: DV Tool: w / sacks of cement Port Collar: w / sack of cement
Packer Type: Size: Inch Set at: Feet
Total Depth: Plug Back Depth: Plug Back Method:

Geological Data:

Table with 4 columns: Formation Name, Formation Top, Formation Base, Completion Information. Rows 1 and 2.

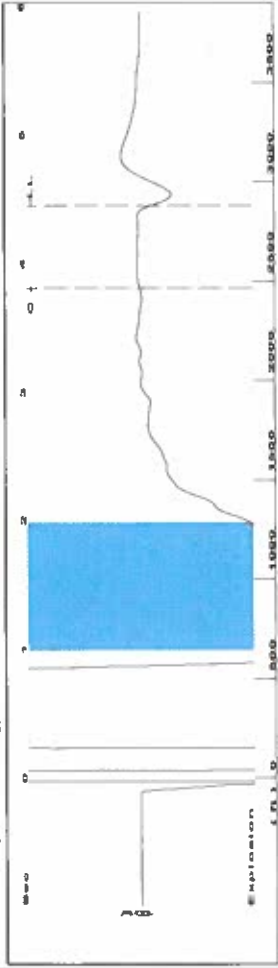
UNDER PENALTY OF PERJURY I HEREBY ATTEST THAT THE INFORMATION CONTAINED HEREIN IS TRUE AND CORRECT TO THE BEST OF MY KNOWLEDGE

Submitted Electronically

Form with fields: Do NOT Write in This Space - KCC USE ONLY, Date Tested, Results, Date Plugged, Date Repaired, Date Put Back in Service, Review Completed by, Comments, TA Approved: Yes Denied, Date.

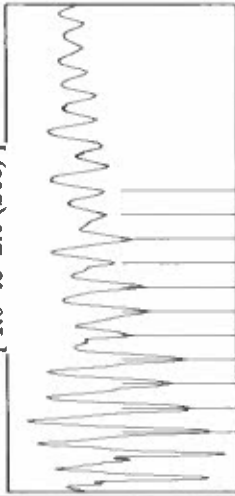
Mail to the Appropriate KCC Conservation Office:

Table with 2 columns: Office Address, Phone. Rows for District Office #1, #2, #3, #4.

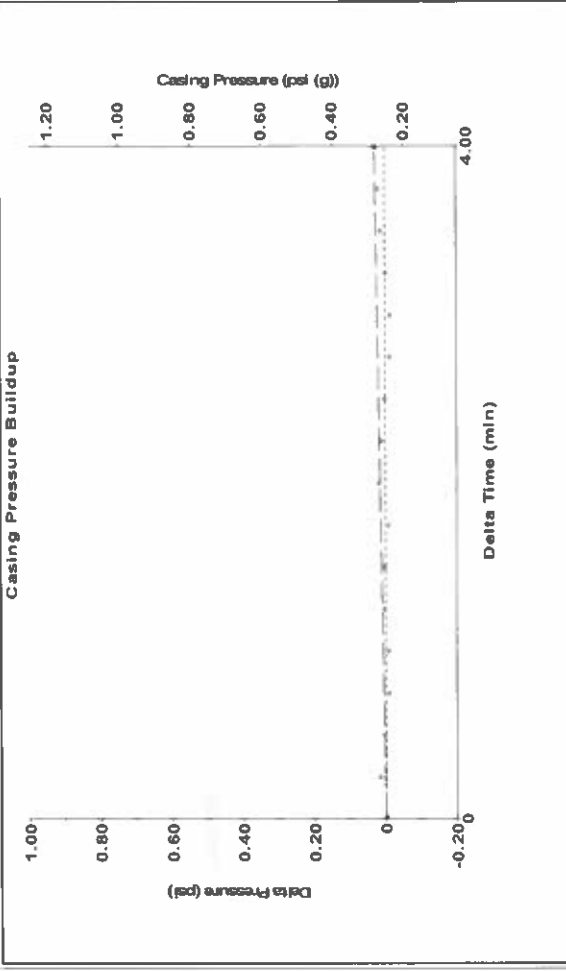


Filter Type High Pass Automatic Collar Count Yes Time 4.454 sec
 Manual Acoustic Velo 1275.65 ft/s Manual JTS/sec 20.1207 Joints 90.898 Jts
 Depth 2881.47 ft

1.0 to 2.0 (Sec)

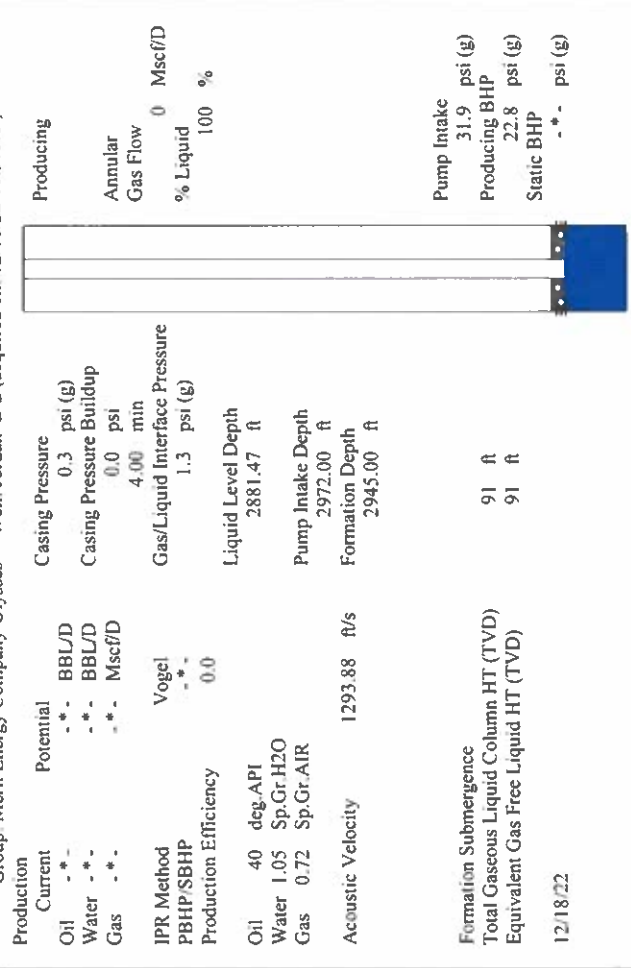


Change in Pressure 0.03 psi PT18865 Range
 Change in Time 4.00 min 0-? psi



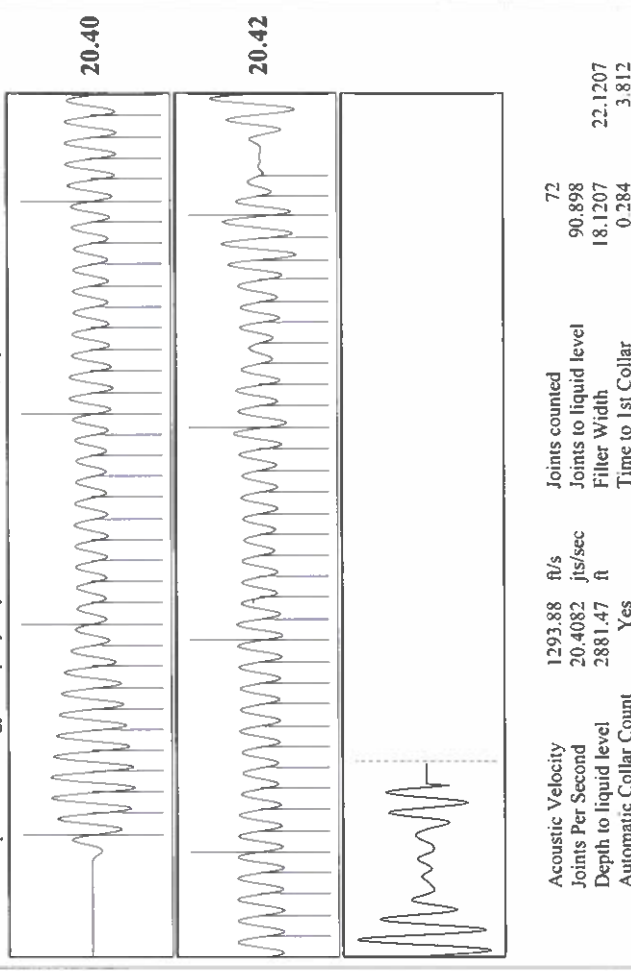
Change in Pressure 0.03 psi PT18865 Range
 Change in Time 4.00 min 0-? psi

Analysis Method: Automatic



Production	Potential	Casing Pressure	Producing
Oil -*- BBL/D	0.3 psi (g)	0.3 psi (g)	Annular
Water -*- BBL/D	0.0 psi	0.0 psi	Gas Flow
Gas -*- Mscf/D	4.00 min	4.00 min	% Liquid
IPR Method	Vogel	Gas/Liquid Interface Pressure	100 %
PBHP/SBHP	-*-	1.3 psi (g)	
Production Efficiency	0.0		
Oil 40 deg-API		Liquid Level Depth	
Water 1.05 Sp.Gr.H2O		2881.47 ft	
Gas 0.72 Sp.Gr.AIR		Pump Intake Depth	
Acoustic Velocity 1293.88 ft/s		2972.00 ft	
		Formation Depth	
		2945.00 ft	
Formation Submergence			
Total Gaseous Liquid Column HT (TVD)	91 ft		
Equivalent Gas Free Liquid HT (TVD)	91 ft		

12/18/22



Acoustic Velocity 1293.88 ft/s Joints counted 72
 Joints Per Second 20.4082 jts/sec Joints to liquid level 90.898
 Depth to liquid level 2881.47 ft Filter Width 18.1207
 Automatic Collar Count Yes Time to 1st Collar 0.284 3.812

April 13, 2023

Katherine McClurkan
Merit Energy Company, LLC
13727 Noel Road, Suite 1200
Dallas, TX 75240

Re: Temporary Abandonment
API 15-067-20451-00-00
Jordan B 2
SE/4 Sec.04-29S-35W
Grant County, Kansas

Dear Katherine McClurkan:

Your application for Temporary Abandonment (TA) for the above-listed well is denied for the following reasons(s):

Shut-in Over 10 years

Pursuant to K.A.R. 82-3-111, the well must be plugged, or returned to service, or obtain temporary abandonment status by 05/13/2023.

This deadline does NOT override any compliance deadline given to you in any Commission Order.

You may contact me if you have any questions.

Sincerely,
Michael Maier
KCC DISTRICT 1