

KANSAS CORPORATION COMMISSION
OIL & GAS CONSERVATION DIVISION

Form must be Typed
Form must be signed

TEMPORARY ABANDONMENT WELL APPLICATION

All blanks must be complete

OPERATOR: License#
Name:
Address 1:
Address 2:
City: State: Zip:
Contact Person:
Phone:
Contact Person Email:
Field Contact Person:
Field Contact Person Phone:

API No. 15-
Spot Description:
Sec. Twp. S. R.
feet from N / S Line of Section
feet from E / W Line of Section
GPS Location: Lat: , Long:
Datum: NAD27 NAD83 WGS84
County: Elevation: GL KB
Lease Name: Well #:
Well Type: (check one) Oil Gas OG WSW Other:
SWD Permit #: ENHR Permit #:
Gas Storage Permit #:
Spud Date: Date Shut-In:

Table with 7 columns: Conductor, Surface, Production, Intermediate, Liner, Tubing. Rows include Size, Setting Depth, Amount of Cement, Top of Cement, Bottom of Cement.

Casing Fluid Level from Surface: How Determined? Date:
Casing Squeeze(s): to w / sacks of cement, to w / sacks of cement. Date:
Do you have a valid Oil & Gas Lease? Yes No
Depth and Type: Junk in Hole at Tools in Hole at Casing Leaks: Yes No Depth of casing leak(s):
Type Completion: ALT. I ALT. II Depth of: DV Tool: w / sacks of cement Port Collar: w / sack of cement
Packer Type: Size: Inch Set at: Feet
Total Depth: Plug Back Depth: Plug Back Method:

Geological Date:

Table with 4 columns: Formation Name, Formation Top, Formation Base, Completion Information. Rows 1 and 2.

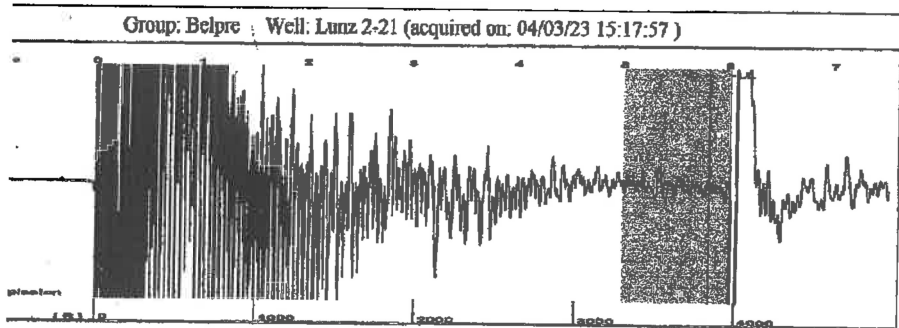
UNDER PENALTY OF PERJURY I HEREBY ATTEST THAT THE INFORMATION CONTAINED HEREIN IS TRUE AND CORRECT TO THE BEST OF MY KNOWLEDGE

Submitted Electronically

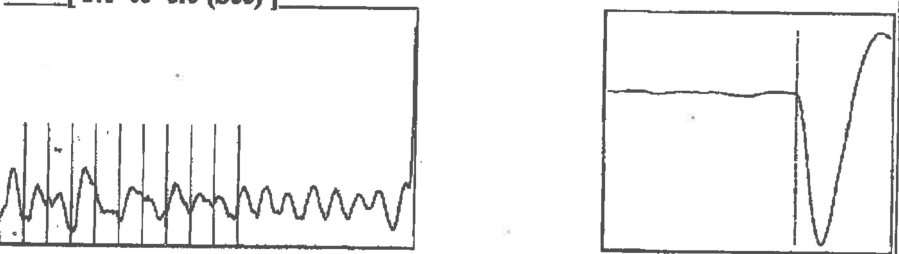
Do NOT Write in This Space - KCC USE ONLY
Date Tested: Results: Date Plugged: Date Repaired: Date Put Back in Service:
Review Completed by: Comments:
TA Approved: Yes Denied Date:

Mail to the Appropriate KCC Conservation Office:

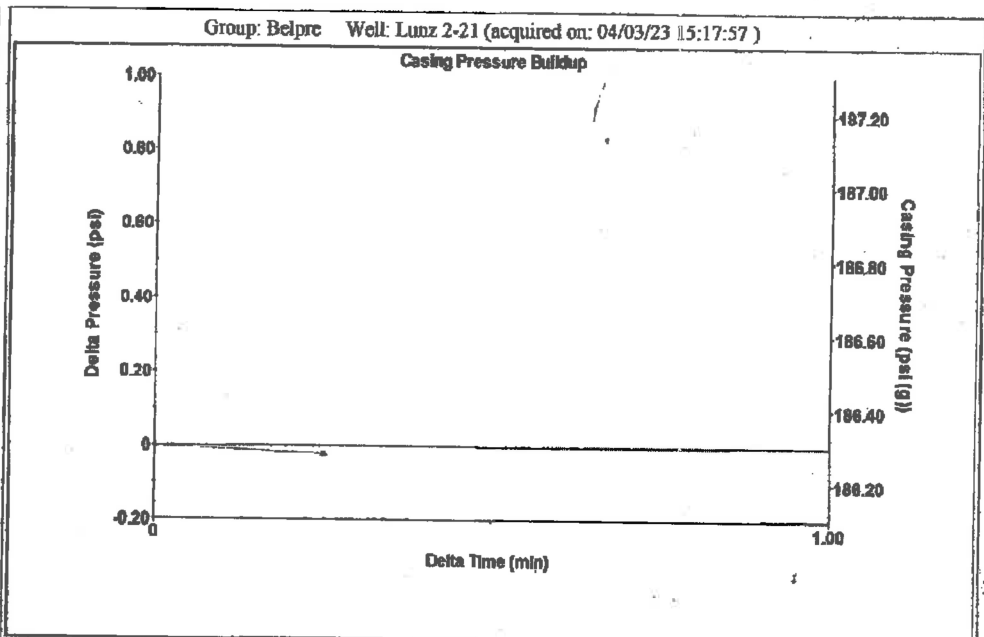
Table with 2 columns: Office Address, Phone. Rows for KCC District Office #1, #2, #3, #4.



pe High Pass Automatic Collar Count Yes Time 6.01 sec
 Acoustic Velo 1278.35 ft/s Manual JTS/sec 20.6186 Joints 128.103 Jts
 Depth 3971.20 ft



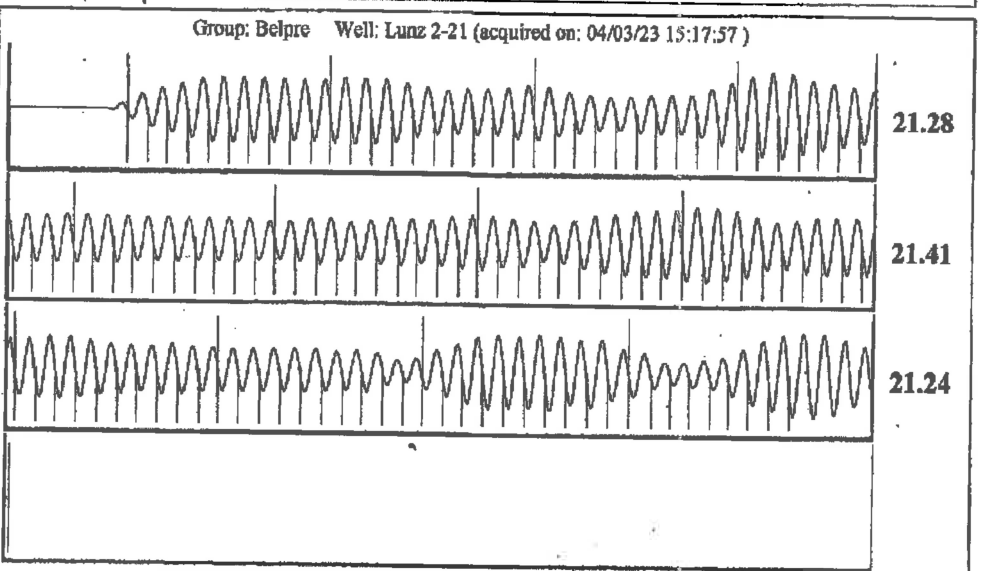
Analysis Method: Automatic



Change in Pressure -0.02 psi PT13440
 Change in Time 0.25 min Range 0 - 7 psi

Group: Belpre Well: Lunz 2-21 (acquired on: 04/03/23 15:17:57)

tion rent	Potential	Casing Pressure	Producing
-. -. BBL/D		186.3 psi (g)	
-. -. BBL/D		Casing Pressure Buildup	Annular
-. -. Mscf/D		-0.0 psi	Gas Flow
		0.25 min	0 Mscf/D
ethod	Vogel	Gas/Liquid Interface Pressure	% Liquid
SBHP	-. -.	205.4 psi (g)	100 %
tion Efficiency	0.0	Liquid Level Depth	
		3971.20 ft	
		Pump Intake Depth	
		4279.00 ft	
ic Velocity	1321.53 ft/s	Formation Depth	
		4291.00 ft	
tion Submergence		Pump Intake	
aseous Liquid Column HT (TVD)	308 ft	307.8 psi (g)	
ilent Gas Free Liquid HT (TVD)	308 ft	Producing BHP	
		313.2 psi (g)	
		Static BHP	
		-. psi (g)	



Acoustic Velocity	1321.53 ft/s	Joints counted	118
Joints Per Second	21.315 jts/sec	Joints to liquid level	128.103
Depth to liquid level	3971.2 ft	Filter Width	18.6186 22.6186
Automatic Collar Count	Yes	Time to 1st Collar	0.272 5.808

April 18, 2023

Loveness Mpanje
F. G. Holl Company L.L.C.
9431 E CENTRAL STE 100
WICHITA, KS 67206-2563

Re: Temporary Abandonment
API 15-047-20132-00-00
LUNZ 2
E/2 Sec.21-24S-16W
Edwards County, Kansas

Dear Loveness Mpanje:

"Your temporary abandonment (TA) application for the well listed above has been approved. In accordance with K.A.R. 82-3-111 the TA status of this well will expire 04/18/2024.

- * If you return this well to service or plug it, please notify the District Office.
- * If you sell this well you are required to file a Transfer of Operator form, T-1.
- * If the well will remain temporarily abandoned, you must submit a new TA application, CP-111, before 04/18/2024.

You may contact me at the number above if you have questions.

Very truly yours,

Michael Maier"