

KANSAS CORPORATION COMMISSION
OIL & GAS CONSERVATION DIVISION

TEMPORARY ABANDONMENT WELL APPLICATION

OPERATOR: License#
Name:
Address 1:
Address 2:
City: State: Zip:
Contact Person:
Phone:
Contact Person Email:
Field Contact Person:
Field Contact Person Phone:

API No. 15-
Spot Description:
Sec. Twp. S. R.
GPS Location: Lat: Long:
Datum: NAD27 NAD83 WGS84
County: Elevation:
Lease Name: Well #:
Well Type: Oil Gas OG WSW Other:
SWD Permit #: ENHR Permit #:
Gas Storage Permit #:
Spud Date: Date Shut-In:

Table with 7 columns: Conductor, Surface, Production, Intermediate, Liner, Tubing. Rows include Size, Setting Depth, Amount of Cement, Top of Cement, Bottom of Cement.

Casing Fluid Level from Surface: How Determined? Date:
Casing Squeeze(s): to w / sacks of cement, to w / sacks of cement. Date:
Do you have a valid Oil & Gas Lease? Yes No
Depth and Type: Junk in Hole at Tools in Hole at Casing Leaks: Yes No Depth of casing leak(s):
Type Completion: ALT. I ALT. II Depth of: DV Tool: w / sacks of cement Port Collar: w / sack of cement
Packer Type: Size: Inch Set at: Feet
Total Depth: Plug Back Depth: Plug Back Method:

Geological Data:

Table with 4 columns: Formation Name, Formation Top, Formation Base, Completion Information. Rows 1 and 2.

UNDER PENALTY OF PERJURY I HEREBY ATTEST THAT THE INFORMATION CONTAINED HEREIN IS TRUE AND CORRECT TO THE BEST OF MY KNOWLEDGE

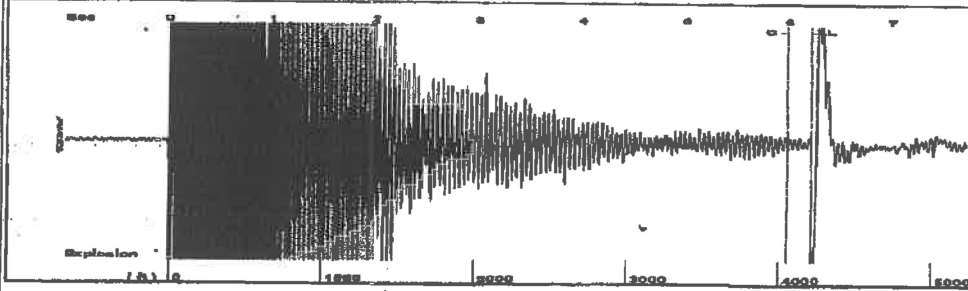
Submitted Electronically

Do NOT Write in This Space - KCC USE ONLY
Date Tested: Results: Date Plugged: Date Repaired: Date Put Back in Service:
Review Completed by: Comments:
TA Approved: Yes Denied Date:

Mail to the Appropriate KCC Conservation Office:

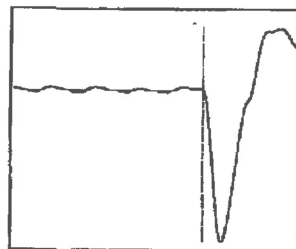
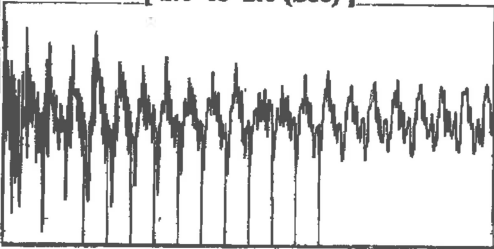
Table with 3 columns: District Office #, Address, Phone. Rows 1-4.

Group: Belpre Well: Breitenbach M 1-19 (acquired on: 04/03/23 15:00:28)



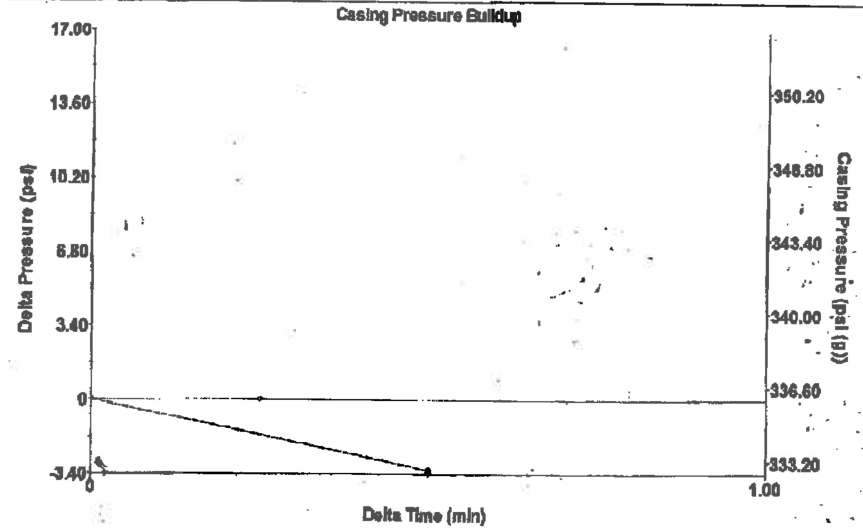
Filter Type High Pass Automatic Collar Count Yes Time 6.212 sec
 Manual Acoustic Velo 1320.83 ft/s Manual JTS/sec 20.8333 Joints 132.679 Jts
 Depth 4205.93 ft

[1.0 to 2.0 (Sec)]



Analysis Method: Automatic

Group: Belpre Well: Breitenbach M 1-19 (acquired on: 04/03/23 15:00:28)



Change in Pressur -3.22 psi PT13440
 Range -0.7 psi
 Change in Time 0.50 min

Group: Belpre Well: Breitenbach M 1-19 (acquired on: 04/03/23 15:00:28)

Production					
Current	Potential		Casing Pressure	Producing	
Oil -*	-* BBL/D		336.0 psi (g)		
Water -*	-* BBL/D		Casing Pressure Buildup		
Gas -*	-* Mscf/D		-3.2 psi		
			0.50 min	Annular Gas Flow	0 Mscf/D
IPR Method	Vogel		Gas/Liquid Interface Pressure	% Liquid	100 %
PBHP/SBHP	-*		370.1 psi (g)		
Production Efficiency	0.0		Liquid Level Depth		
Oil 40 deg.API			4205.93 ft		
Water 1.05 Sp.Gr.H2O			Pump Intake Depth		
Gas 0.63 Sp.Gr.AIR			4308.00 ft		
Acoustic Velocity	1354.13 ft/s		Formation Depth		
			4304.00 ft		

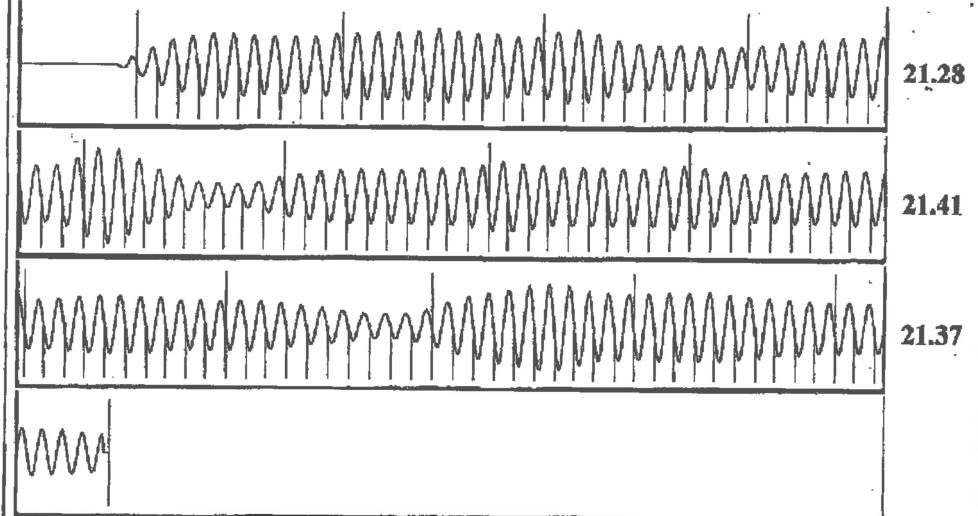


Pump Intake 403.6 psi (g)
 Producing BHP 402.3 psi (g)
 Static BHP -* psi (g)

Formation Submergence
 Total Gaseous Liquid Column HT (TVD) 102 ft
 Equivalent Gas Free Liquid HT (TVD) 102 ft

Acoustic Test

Group: Belpre Well: Breitenbach M 1-19 (acquired on: 04/03/23 15:00:28)



Acoustic Velocity 1354.13 ft/s Joints counted 122
 Joints Per Second 21.3585 jts/sec Joints to liquid level 132.679
 Depth to liquid level 4205.93 ft Filter Width 18.8333 22.8333
 Automatic Collar Count Yes Time to 1st Collar 0.268 5.98

April 18, 2023

Loveness Mpanje
F. G. Holl Company L.L.C.
9431 E CENTRAL STE 100
WICHITA, KS 67206-2563

Re: Temporary Abandonment
API 15-047-21235-00-00
BREITENBACH M 1-19
SE/4 Sec.19-24S-16W
Edwards County, Kansas

Dear Loveness Mpanje:

"Your temporary abandonment (TA) application for the well listed above has been approved. In accordance with K.A.R. 82-3-111 the TA status of this well will expire 04/18/2024.

- * If you return this well to service or plug it, please notify the District Office.
- * If you sell this well you are required to file a Transfer of Operator form, T-1.
- * If the well will remain temporarily abandoned, you must submit a new TA application, CP-111, before 04/18/2024.

You may contact me at the number above if you have questions.

Very truly yours,

Michael Maier"