

KANSAS CORPORATION COMMISSION
OIL & GAS CONSERVATION DIVISION

TEMPORARY ABANDONMENT WELL APPLICATION

OPERATOR: License#
Name:
Address 1:
Address 2:
City: State: Zip:
Contact Person:
Phone:
Contact Person Email:
Field Contact Person:
Field Contact Person Phone:

API No. 15-
Spot Description:
Sec. Twp. S. R.
feet from N / S Line of Section
feet from E / W Line of Section
GPS Location: Lat: , Long:
Datum: NAD27 NAD83 WGS84
County: Elevation: GL KB
Lease Name: Well #:
Well Type: Oil Gas OG WSW Other:
SWD Permit #: ENHR Permit #:
Gas Storage Permit #:
Spud Date: Date Shut-In:

Table with 7 columns: Conductor, Surface, Production, Intermediate, Liner, Tubing. Rows include Size, Setting Depth, Amount of Cement, Top of Cement, Bottom of Cement.

Casing Fluid Level from Surface: How Determined? Date:
Casing Squeeze(s): to w / sacks of cement, to w / sacks of cement. Date:
Do you have a valid Oil & Gas Lease? Yes No
Depth and Type: Junk in Hole at Tools in Hole at Casing Leaks: Yes No Depth of casing leak(s):
Type Completion: ALT. I ALT. II Depth of: DV Tool: w / sacks of cement Port Collar: w / sack of cement
Packer Type: Size: Inch Set at: Feet
Total Depth: Plug Back Depth: Plug Back Method:

Geological Data:

Table with 4 columns: Formation Name, Formation Top, Formation Base, Completion Information. Rows 1 and 2.

UNDER PENALTY OF PERJURY I HEREBY ATTEST THAT THE INFORMATION CONTAINED HEREIN IS TRUE AND CORRECT TO THE BEST OF MY KNOWLEDGE

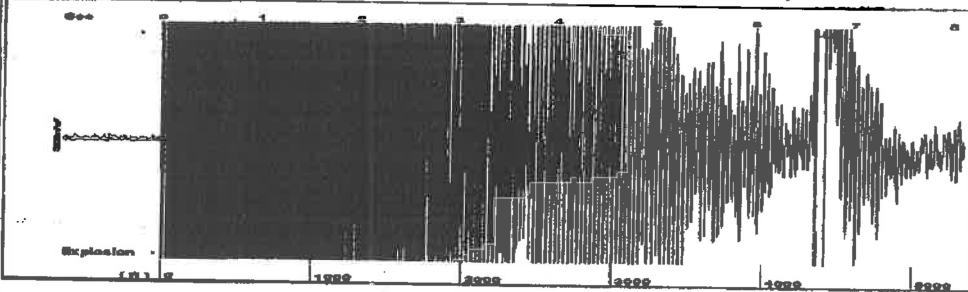
Submitted Electronically

Do NOT Write in This Space - KCC USE ONLY
Date Tested: Results: Date Plugged: Date Repaired: Date Put Back in Service:
Review Completed by: Comments:
TA Approved: Yes Denied Date:

Mail to the Appropriate KCC Conservation Office:

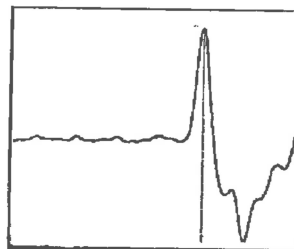
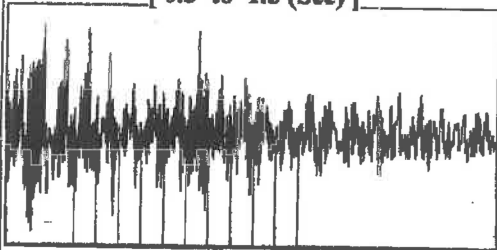
Table with 3 columns: District Office #, Address, Phone. Rows 1-4.

Group: Belpre Well: Breitenbach C 1-14 (acquired on: 04/03/23 13:40:32)



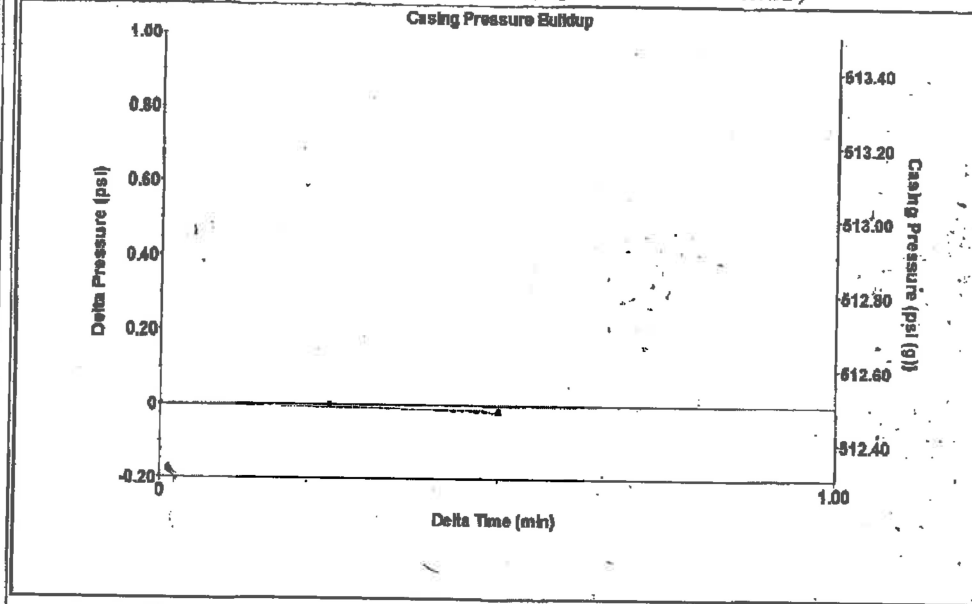
Filter Type High Pass Automatic Collar Count Yes Time 6.608 sec
 Manual Acoustic Velocity 1315.79 ft/s Manual JTS/sec 21.9298 Joints 145.054 Jts
 Depth 4351.61 ft

[0.5 to 1.5 (Sec)]



Analysis Method: Automatic

Group: Belpre Well: Breitenbach C 1-14 (acquired on: 04/03/23 13:40:32)



Change in Pressure -0.02 psi PT13440
 Change in Time 0.50 min Range -0.7 psi

Group: Belpre Well: Breitenbach C 1-14 (acquired on: 04/03/23 13:40:32)

| | | |
|--------------------------------|-------------------------------|-------------------------|
| Production Current | Potential | Casing Pressure |
| Oil -*- BBL/D | -*- BBL/D | 512.5 psi (g) |
| Water -*- BBL/D | -*- BBL/D | Casing Pressure Buildup |
| Gas -*- Mscf/D | -*- Mscf/D | -0.0 psi |
| | | 0.50 min |
| IPR Method Vogel | Gas/Liquid Interface Pressure | |
| PBHP/SBHP -*- | 568.7 psi (g) | |
| Production Efficiency 0.0 | | |
| Oil 40 deg API | Liquid Level Depth | |
| Water 1.05 Sp.Gr.H2O | 4351.61 ft | |
| Gas 0.65 Sp.Gr.AIR | Tubing Intake Depth | |
| | 4435.00 ft | |
| Acoustic Velocity 1317.07 ft/s | Formation Depth | |
| | 4441.00 ft | |

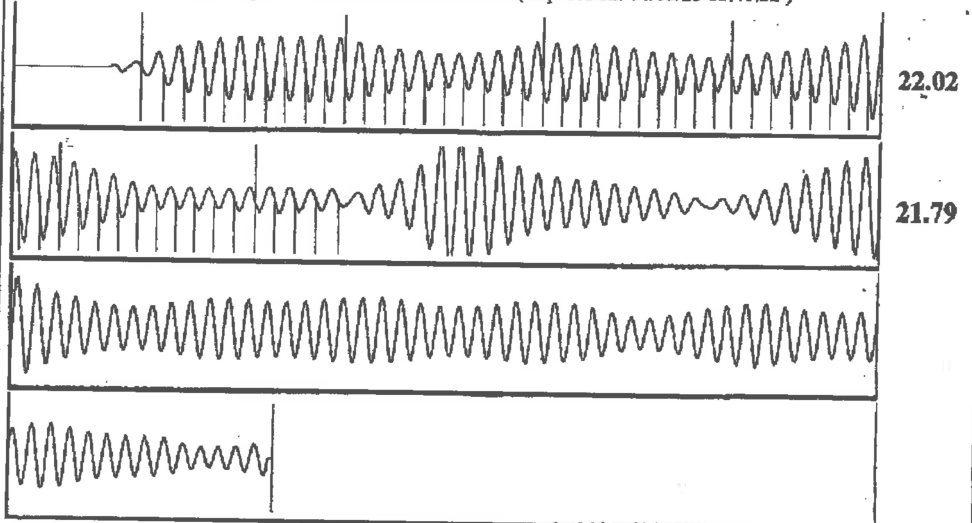


Producing
 Annular Gas Flow 0 Mscf/D
 % Liquid 100 %
 Tubing Intake 606.6 psi (g)
 Producing BHP 609.3 psi (g)
 Static BHP -*- psi (g)

Formation Submergence
 Total Gaseous Liquid Column HT (TVD) 89 ft
 Equivalent Gas Free Liquid HT (TVD) 89 ft

Acoustic Test

Group: Belpre Well: Breitenbach C 1-14 (acquired on: 04/03/23 13:40:32)



| | | | |
|------------------------|-----------------|------------------------|---------|
| Acoustic Velocity | 1317.07 ft/s | Joints counted | 54 |
| Joints Per Second | 21.9512 jts/sec | Joints to liquid level | 145.054 |
| Depth to liquid level | 4351.61 ft | Filter Width | 19.9298 |
| Automatic Collar Count | Yes | Time to 1st Collar | 0.292 |
| | | | 23.9298 |
| | | | 2.752 |

April 18, 2023

Loveness Mpanje
F. G. Holl Company L.L.C.
9431 E CENTRAL STE 100
WICHITA, KS 67206-2563

Re: Temporary Abandonment
API 15-047-20621-00-00
BREITENBACH - C 1-14
NE/4 Sec.14-25S-17W
Edwards County, Kansas

Dear Loveness Mpanje:

"Your temporary abandonment (TA) application for the well listed above has been approved. In accordance with K.A.R. 82-3-111 the TA status of this well will expire 04/18/2024.

- * If you return this well to service or plug it, please notify the District Office.
- * If you sell this well you are required to file a Transfer of Operator form, T-1.
- * If the well will remain temporarily abandoned, you must submit a new TA application, CP-111, before 04/18/2024.

You may contact me at the number above if you have questions.

Very truly yours,

Michael Maier"