

KANSAS CORPORATION COMMISSION
OIL & GAS CONSERVATION DIVISION

TEMPORARY ABANDONMENT WELL APPLICATION

OPERATOR: License#
Name:
Address 1:
Address 2:
City: State: Zip:
Contact Person:
Phone:
Contact Person Email:
Field Contact Person:
Field Contact Person Phone:

API No. 15-
Spot Description:
Sec. Twp. S. R.
GPS Location: Lat: Long:
Datum: NAD27 NAD83 WGS84
County: Elevation:
Lease Name: Well #:
Well Type: Oil Gas OG WSW Other:
SWD Permit #: ENHR Permit #:
Gas Storage Permit #:
Spud Date: Date Shut-In:

Table with 7 columns: Conductor, Surface, Production, Intermediate, Liner, Tubing. Rows include Size, Setting Depth, Amount of Cement, Top of Cement, Bottom of Cement.

Casing Fluid Level from Surface: How Determined? Date:
Casing Squeeze(s): to w / sacks of cement, to w / sacks of cement. Date:
Do you have a valid Oil & Gas Lease? Yes No
Depth and Type: Junk in Hole at Tools in Hole at Casing Leaks: Yes No Depth of casing leak(s):
Type Completion: ALT. I ALT. II Depth of: DV Tool: w / sacks of cement Port Collar: w / sack of cement
Packer Type: Size: Inch Set at: Feet
Total Depth: Plug Back Depth: Plug Back Method:

Geological Data:

Table with 4 columns: Formation Name, Formation Top, Formation Base, Completion Information. Rows 1 and 2.

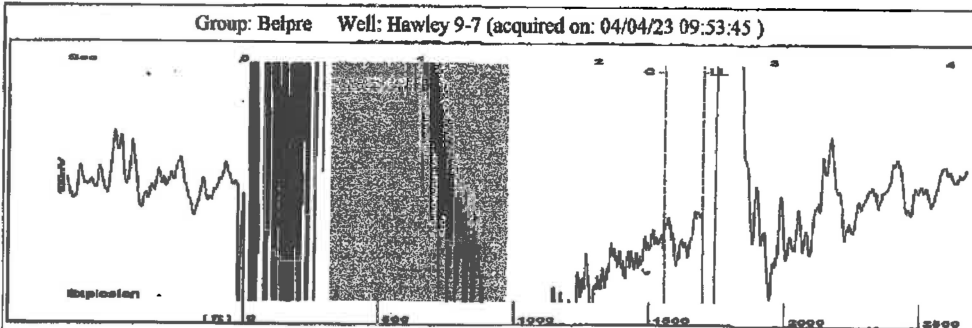
UNDER PENALTY OF PERJURY I HEREBY ATTEST THAT THE INFORMATION CONTAINED HEREIN IS TRUE AND CORRECT TO THE BEST OF MY KNOWLEDGE

Submitted Electronically

Do NOT Write in This Space - KCC USE ONLY
Date Tested: Results: Date Plugged: Date Repaired: Date Put Back in Service:
Review Completed by: Comments:
TA Approved: Yes Denied Date:

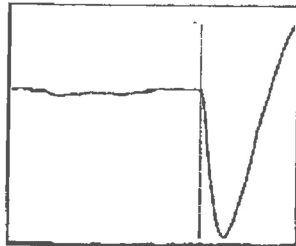
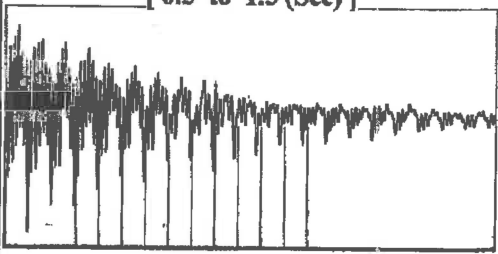
Mail to the Appropriate KCC Conservation Office:

Table with 3 columns: District Office, Address, Phone. Rows for District Office #1, #2, #3, #4.

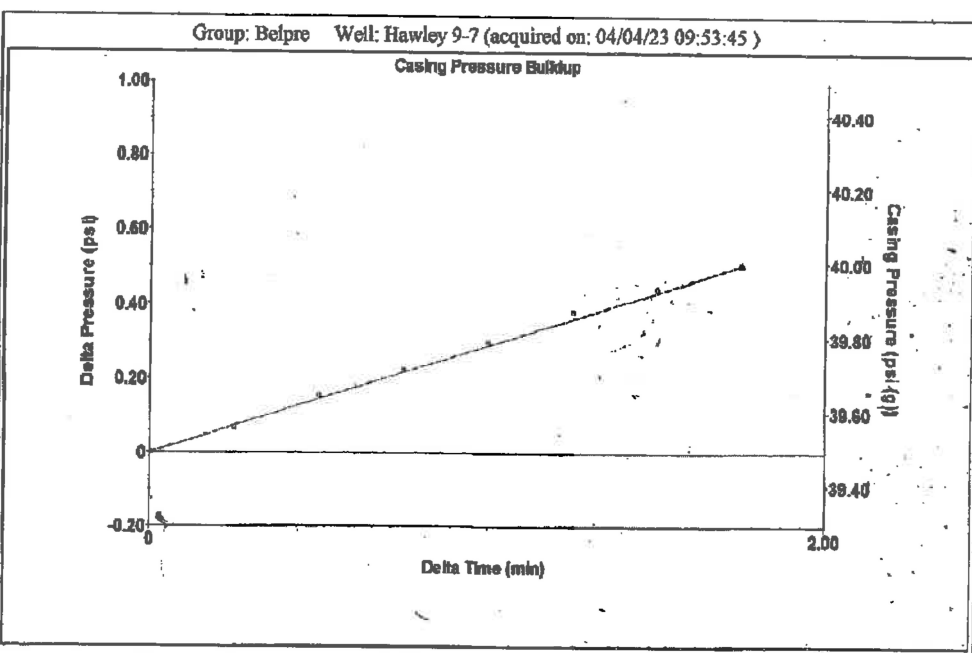


Group: Belpre Well: Hawley 9-7 (acquired on: 04/04/23 09:53:45)

Filter Type High Pass Automatic Collar Count Yes Time 2.6 sec
 Manual Acoustic Vel 1308.02 ft/s Manual JTS/sec 21.097 Joints 54.6845 Jts
 Depth 1695.22 ft



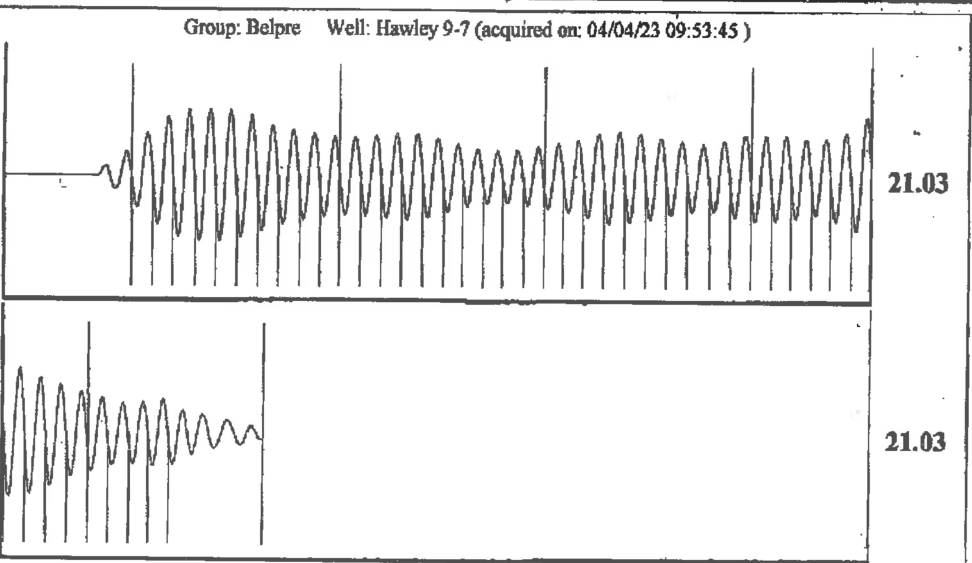
Analysis Method: Automatic



Change in Pressure 0.50 psi PT13440
 Change in Time 1.75 min Range -0.7 psi

Group: Belpre Well: Hawley 9-7 (acquired on: 04/04/23 09:53:45)

Production Current	Potential	Casing Pressure	Producing
Oil - * -	- * - BBL/D	39.5 psi (g)	Annular Gas Flow
Water - * -	- * - BBL/D	Casing Pressure Buildup	6 Mscf/D
Gas - * -	- * - Mscf/D	0.5 psi	% Liquid
		1.75 min	79 %
IPR Method	Vogel	Gas/Liquid Interface Pressure	
PBHP/SBHP	- * -	41.7 psi (g)	
Production Efficiency	0.0		
Oil 40 deg.API		Liquid Level Depth	
Water 1.05 Sp.Gr.H2O		1695.22 ft	
Gas 0.68 Sp.Gr.AIR		Pump Intake Depth	
		- * - ft	
Acoustic Velocity	1304.02 ft/s	Formation Depth	
		4257.00 ft	
Formation Submergence			Pump Intake
Total Gaseous Liquid Column HT (TVD)	2562 ft		- * - psi (g)
Equivalent Gas Free Liquid HT (TVD)	2025 ft		Producing BHP
			968.6 psi (g)
Acoustic Test			Static BHP
			- * - psi (g)



Acoustic Velocity 1304.02 ft/s Joints counted 44
 Joints Per Second 21.0325 jts/sec Joints to liquid level 54.6845
 Depth to liquid level 1695.22 ft Filter Width 19.097 23.097
 Automatic Collar Count Yes Time to 1st Collar 0.292 2.384

April 18, 2023

Margery L. Nagel
F. G. Holl Company L.L.C.
9431 E CENTRAL STE 100
WICHITA, KS 67206-2563

Re: Temporary Abandonment
API 15-047-21122-00-01
HAWLEY 9-7
NW/4 Sec.07-24S-16W
Edwards County, Kansas

Dear Margery L. Nagel:

"Your temporary abandonment (TA) application for the well listed above has been approved. In accordance with K.A.R. 82-3-111 the TA status of this well will expire 04/18/2024.

- * If you return this well to service or plug it, please notify the District Office.
- * If you sell this well you are required to file a Transfer of Operator form, T-1.
- * If the well will remain temporarily abandoned, you must submit a new TA application, CP-111, before 04/18/2024.

You may contact me at the number above if you have questions.

Very truly yours,

Michael Maier"