

KANSAS CORPORATION COMMISSION
OIL & GAS CONSERVATION DIVISION

TEMPORARY ABANDONMENT WELL APPLICATION

OPERATOR: License#
Name:
Address 1:
Address 2:
City: State: Zip:
Contact Person:
Phone:
Contact Person Email:
Field Contact Person:
Field Contact Person Phone:

API No. 15-
Spot Description:
Sec. Twp. S. R.
GPS Location: Lat: Long:
Datum: NAD27 NAD83 WGS84
County: Elevation:
Lease Name: Well #:
Well Type: Oil Gas OG WSW Other:
SWD Permit #: ENHR Permit #:
Gas Storage Permit #:
Spud Date: Date Shut-In:

Table with 7 columns: Conductor, Surface, Production, Intermediate, Liner, Tubing. Rows include Size, Setting Depth, Amount of Cement, Top of Cement, Bottom of Cement.

Casing Fluid Level from Surface: How Determined? Date:
Casing Squeeze(s): to w / sacks of cement, to w / sacks of cement. Date:
Do you have a valid Oil & Gas Lease? Yes No
Depth and Type: Junk in Hole at Tools in Hole at Casing Leaks: Yes No Depth of casing leak(s):
Type Completion: ALT. I ALT. II Depth of: DV Tool: w / sacks of cement Port Collar: w / sack of cement
Packer Type: Size: Inch Set at: Feet
Total Depth: Plug Back Depth: Plug Back Method:

Geological Date:

Table with 4 columns: Formation Name, Formation Top, Formation Base, Completion Information. Rows 1 and 2.

UNDER PENALTY OF PERJURY I HEREBY ATTEST THAT THE INFORMATION CONTAINED HEREIN IS TRUE AND CORRECT TO THE BEST OF MY KNOWLEDGE

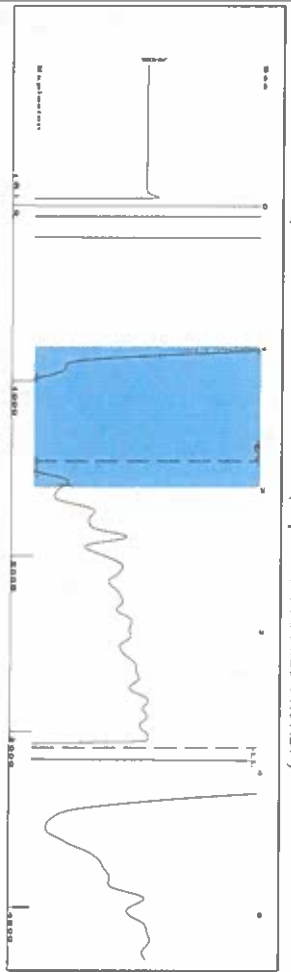
Submitted Electronically

Do NOT Write in This Space - KCC USE ONLY
Date Tested: Results: Date Plugged: Date Repaired: Date Put Back in Service:
Review Completed by: Comments:
TA Approved: Yes Denied Date:

Mail to the Appropriate KCC Conservation Office:

Table with 2 columns: Office Address, Phone. Rows for District Office #1, #2, #3, #4.

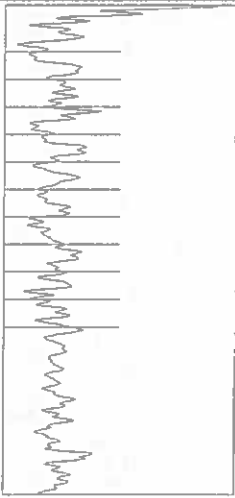
Group: SUBLETTE Well: NLV 4-1 (acquired on: 04/14/23 14:07:27)



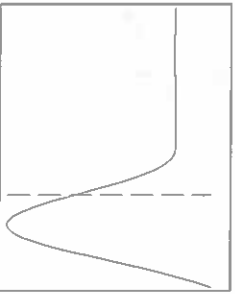
Filter Type High Pass
Manual Acoustic Velo 1595.74 ft/s
Automatic Collar Count Yes
Manual JTS/sec 17.7305

Time 3.827 sec
Joints 68.7028 Jts
Depth 3091.63 ft

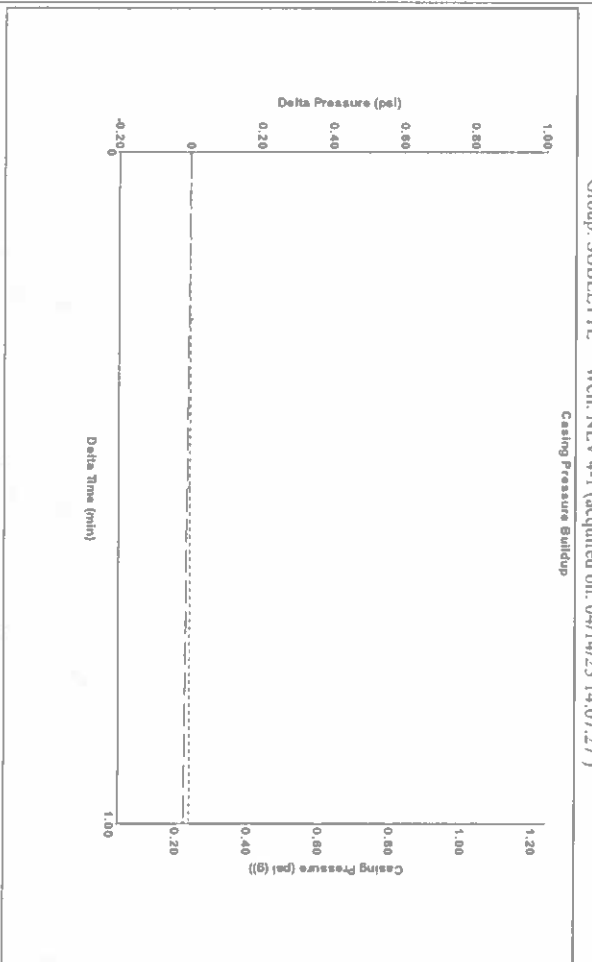
1.10 to 2.0 (Sec) |



Analysis Method: Automatic



Group: SUBLETTE Well: NLV 4-1 (acquired on: 04/14/23 14:07:27)

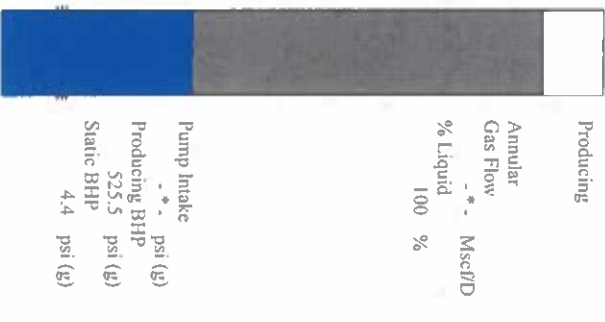


Change in Pressure -0.02 psi
Change in Time 1.00 min
PT16716
Range 0 - ? psi

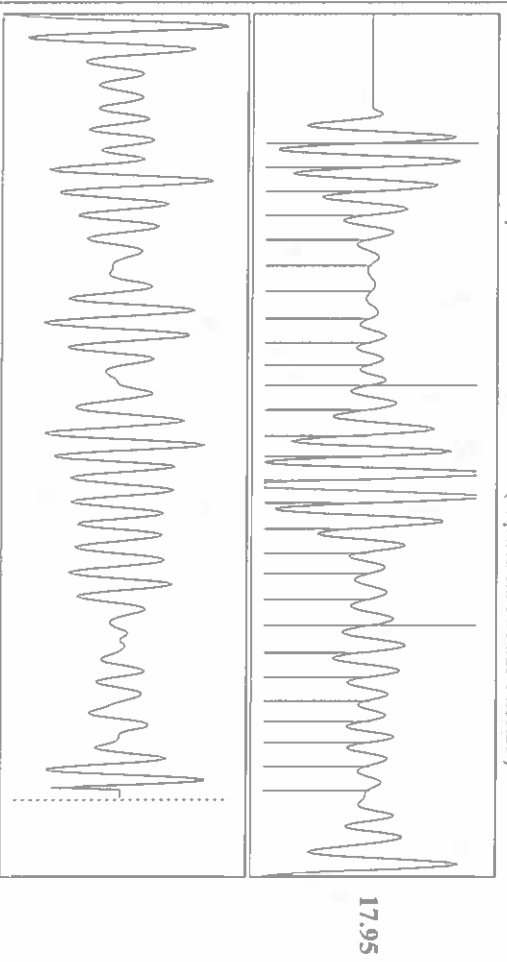
Group: SUBLETTE Well: NLV 4-1 (acquired on: 04/14/23 14:07:27)

Production Current	Potential	Casing Pressure	Producing
Oil -*- Water -*- Gas -*-	BB/LD -*- BB/LD -*- Msc/D -*-	0.2 psi (g) Casing Pressure Buildup -0.0 psi 1.00 min Gas/Liquid Interface Pressure 1.1 psi (g)	Annular Gas Flow -*- % Liquid 100 % Msc/D -*-
I/P Method PBHP/SBHP Production Efficiency 0.0	Vogel -*- 0.0	Liquid Level Depth 3091.63 ft	Pump Intake -*- Producing BHP 525.5 psi (g) Static BHP 4.4 psi (g)
Oil 40 deg API Water 1.05 Sp.Gr.H2O Gas 0.55 Sp.Gr.AIR		Pump Intake Depth -*- Formation Depth 4245.00 ft	
Acoustic Velocity 1615.69 ft/s			

Formation Submergence
Total Gaseous Liquid Column HT (TVD) 1153 ft
Equivalent Gas Free Liquid HT (TVD) 1153 ft
4/14/23



Group: SUBLETTE Well: NLV 4-1 (acquired on: 04/14/23 14:07:27)



Acoustic Velocity 1615.69 ft/s
Joints Per Second 17.9521 Jts/Sec
Depth to liquid level 3091.63 ft
Automatic Collar Count Yes

Joints counted 27
Joints to liquid level 68.7028
Filter Width 15.7305
Time to 1st Collar 0.3
19.7305
1.804

April 19, 2023

Katherine McClurkan
Merit Energy Company, LLC
13727 Noel Road, Suite 1200
DALLAS, TX 75240-7362

Re: Temporary Abandonment
API 15-081-22202-00-00
NLV 4-1
NE/4 Sec.04-29S-33W
Haskell County, Kansas

Dear Katherine McClurkan:

"Your temporary abandonment (TA) application for the well listed above has been approved. In accordance with K.A.R. 82-3-111 the TA status of this well will expire 04/19/2024.

- * If you return this well to service or plug it, please notify the District Office.
- * If you sell this well you are required to file a Transfer of Operator form, T-1.
- * If the well will remain temporarily abandoned, you must submit a new TA application, CP-111, before 04/19/2024.

You may contact me at the number above if you have questions.

Very truly yours,

Michael Maier"