

TEMPORARY ABANDONMENT WELL APPLICATION

OPERATOR: License# \_\_\_\_\_  
 Name: \_\_\_\_\_  
 Address 1: \_\_\_\_\_  
 Address 2: \_\_\_\_\_  
 City: \_\_\_\_\_ State: \_\_\_\_\_ Zip: \_\_\_\_\_ + \_\_\_\_\_  
 Contact Person: \_\_\_\_\_  
 Phone: ( \_\_\_\_\_ ) \_\_\_\_\_  
 Contact Person Email: \_\_\_\_\_  
 Field Contact Person: \_\_\_\_\_  
 Field Contact Person Phone: ( \_\_\_\_\_ ) \_\_\_\_\_

API No. 15- \_\_\_\_\_  
 Spot Description: \_\_\_\_\_  
 \_\_\_\_\_ - \_\_\_\_\_ - \_\_\_\_\_ - \_\_\_\_\_ Sec. \_\_\_\_\_ Twp. \_\_\_\_\_ S. R. \_\_\_\_\_  E  W  
 \_\_\_\_\_ feet from  N /  S Line of Section  
 \_\_\_\_\_ feet from  E /  W Line of Section  
 GPS Location: Lat: \_\_\_\_\_, Long: \_\_\_\_\_  
(e.g. xx.xxxxx) (e.g. -xxx.xxxxx)  
 Datum:  NAD27  NAD83  WGS84  
 County: \_\_\_\_\_ Elevation: \_\_\_\_\_  GL  KB  
 Lease Name: \_\_\_\_\_ Well #: \_\_\_\_\_  
 Well Type: (check one)  Oil  Gas  OG  WSW  Other: \_\_\_\_\_  
 SWD Permit #: \_\_\_\_\_  ENHR Permit #: \_\_\_\_\_  
 Gas Storage Permit #: \_\_\_\_\_  
 Spud Date: \_\_\_\_\_ Date Shut-In: \_\_\_\_\_

	Conductor	Surface	Production	Intermediate	Liner	Tubing
Size						
Setting Depth						
Amount of Cement						
Top of Cement						
Bottom of Cement						

Casing Fluid Level from Surface: \_\_\_\_\_ How Determined? \_\_\_\_\_ Date: \_\_\_\_\_  
 Casing Squeeze(s): \_\_\_\_\_ to \_\_\_\_\_ w / \_\_\_\_\_ sacks of cement, \_\_\_\_\_ to \_\_\_\_\_ w / \_\_\_\_\_ sacks of cement. Date: \_\_\_\_\_  
(top) (bottom) (top) (bottom)  
 Do you have a valid Oil & Gas Lease?  Yes  No  
 Depth and Type:  Junk in Hole at \_\_\_\_\_  Tools in Hole at \_\_\_\_\_ Casing Leaks:  Yes  No Depth of casing leak(s): \_\_\_\_\_  
(depth) (depth)  
 Type Completion:  ALT. I  ALT. II Depth of:  DV Tool: \_\_\_\_\_ w / \_\_\_\_\_ sacks of cement  Port Collar: \_\_\_\_\_ w / \_\_\_\_\_ sack of cement  
(depth) (depth)  
 Packer Type: \_\_\_\_\_ Size: \_\_\_\_\_ Inch Set at: \_\_\_\_\_ Feet  
 Total Depth: \_\_\_\_\_ Plug Back Depth: \_\_\_\_\_ Plug Back Method: \_\_\_\_\_

Geological Date:

Formation Name	Formation Top	Formation Base	Completion Information
1. _____	At: _____	to _____ Feet	Perforation Interval _____ to _____ Feet or Open Hole Interval _____ to _____ Feet
2. _____	At: _____	to _____ Feet	Perforation Interval _____ to _____ Feet or Open Hole Interval _____ to _____ Feet

UNDER PENALTY OF PERJURY I HEREBY ATTEST THAT THE INFORMATION CONTAINED HEREIN IS TRUE AND CORRECT TO THE BEST OF MY KNOWLEDGE

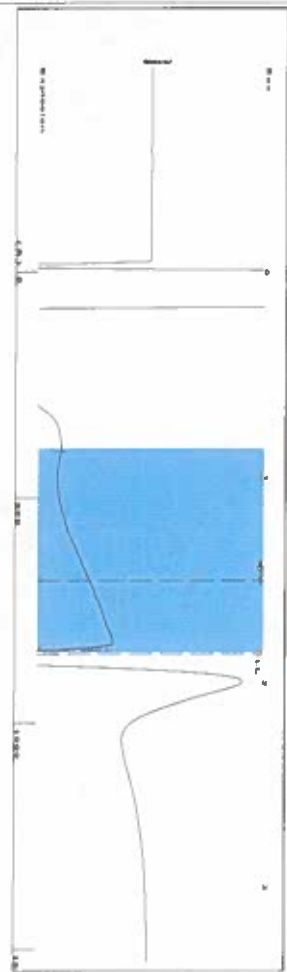
Submitted Electronically

<b>Do NOT Write in This Space - KCC USE ONLY</b>	Date Tested: _____	Results: _____	Date Plugged: _____	Date Repaired: _____	Date Put Back in Service: _____
	Review Completed by: _____ Comments: _____				
TA Approved: <input type="checkbox"/> Yes <input type="checkbox"/> Denied Date: _____					

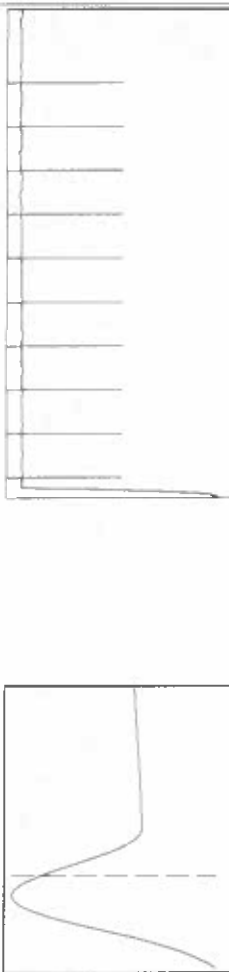
Mail to the Appropriate KCC Conservation Office:

	KCC District Office #1 - 210 E. Frontview, Suite A, Dodge City, KS 67801	Phone 620.682.7933
	KCC District Office #2 - 3450 N. Rock Road, Building 600, Suite 601, Wichita, KS 67226	Phone 316.337.7400
	KCC District Office #3 - 137 E. 21st St., Chanute, KS 66720	Phone 620.902.6450
	KCC District Office #4 - 2301 E. 13th Street, Hays, KS 67601-2651	Phone 785.261.6250

Group: SUBLETTE Well: Diaden Farms 3-K (acquired on: 04/18/23 09:27:21)



Filter Type High Pass Automatic Collar Count Yes  
 Manual Acoustic Velocity 6.238 ft/s Manual JTS/sec 11.0988  
 Time 1.865 sec  
 Joints 20.2717 Jts  
 Depth 845.88 ft

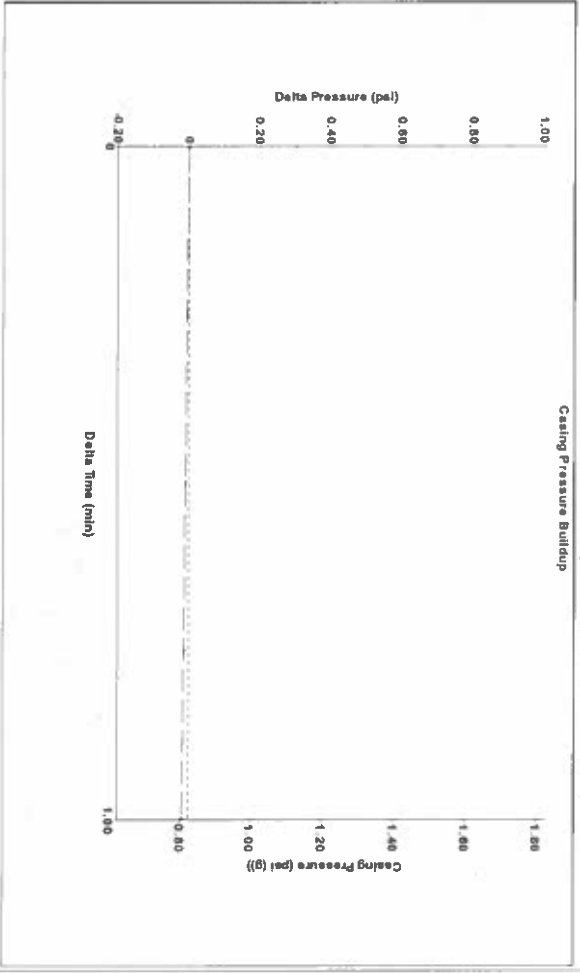


Analysis Method: Automatic

Group: SUBLETTE Well: Diaden Farms 3-K (acquired on: 04/18/23 09:27:21)

Production	Current	Potential	Casing Pressure	Producing
Oil	-*-	-*-	0.8 psi (g)	Annular Gas Flow
Water	-*-	-*-	-0.0 psi	% Liquid
Gas	-*-	-*-	1.00 min	100 %
IPR Method		Vogel	Gas/Liquid Interface Pressure	
PBHP/SBHP		-*-	1.3 psi (g)	
Production Efficiency		0.0	Liquid Level Depth	
Oil	40 deg API		845.88 ft	
Water	1.05 Sp.Gr.H2O		Pump Intake Depth	
Gas	1.05 Sp.Gr.AIR		Formation Depth	
Acoustic Velocity	907.109 ft/s		4740.00 ft	
Formation Submergence				
Total Gaseous Liquid Column HT (TVD)			3894 ft	
Equivalent Gas Free Liquid HT (TVD)			3894 ft	
4/18/23				

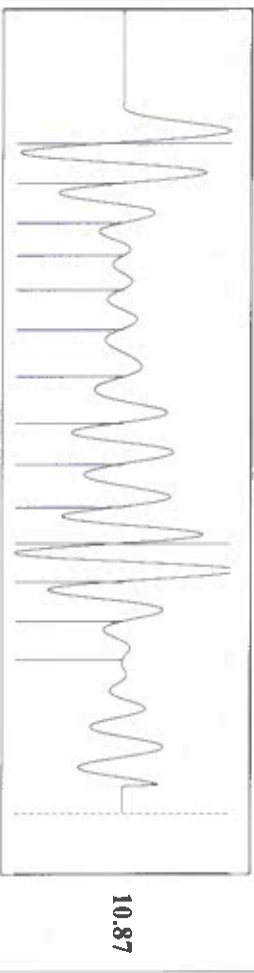
Group: SUBLETTE Well: Diaden Farms 3-K (acquired on: 04/18/23 09:27:21)



Change in Pressure -0.02 psi  
 Change in Time 1.00 min  
 PT16716 Range  
 0 - ? psi

Group: SUBLETTE Well: Diaden Farms 3-K (acquired on: 04/18/23 09:27:21)

Production	Current	Potential	Casing Pressure	Producing
Oil	-*-	-*-	0.8 psi (g)	Annular Gas Flow
Water	-*-	-*-	-0.0 psi	% Liquid
Gas	-*-	-*-	1.00 min	100 %
IPR Method		Vogel	Gas/Liquid Interface Pressure	
PBHP/SBHP		-*-	1.3 psi (g)	
Production Efficiency		0.0	Liquid Level Depth	
Oil	40 deg API		845.88 ft	
Water	1.05 Sp.Gr.H2O		Pump Intake Depth	
Gas	1.05 Sp.Gr.AIR		Formation Depth	
Acoustic Velocity	907.109 ft/s		4740.00 ft	
Formation Submergence				
Total Gaseous Liquid Column HT (TVD)			3894 ft	
Equivalent Gas Free Liquid HT (TVD)			3894 ft	
4/18/23				



Acoustic Velocity 907.109 ft/s  
 Joints Per Second 10.8696 Jts/sec  
 Depth to liquid level 845.879 ft  
 Automatic Collar Count Yes

April 19, 2023

Katherine McClurkan  
Merit Energy Company, LLC  
13727 Noel Road, Suite 1200  
Dallas, TX 75240

Re: Temporary Abandonment  
API 15-081-21640-00-01  
Diaden Farms 3-K15-30-32  
SW/4 Sec.15-30S-32W  
Haskell County, Kansas

Dear Katherine McClurkan:

"Your temporary abandonment (TA) application for the well listed above has been approved. In accordance with K.A.R. 82-3-111 the TA status of this well will expire 11/17/2023.

- \* If you return this well to service or plug it, please notify the District Office.
- \* If you sell this well you are required to file a Transfer of Operator form, T-1.
- \* If the well will remain temporarily abandoned, you must submit a new TA application, CP-111, before 11/17/2023.

You may contact me at the number above if you have questions.

Very truly yours,

Michael Maier"