

KANSAS CORPORATION COMMISSION
OIL & GAS CONSERVATION DIVISION

TEMPORARY ABANDONMENT WELL APPLICATION

OPERATOR: License#
Name:
Address 1:
Address 2:
City: State: Zip:
Contact Person:
Phone:
Contact Person Email:
Field Contact Person:
Field Contact Person Phone:

API No. 15-
Spot Description:
Sec. Twp. S. R.
GPS Location: Lat: Long:
Datum: NAD27 NAD83 WGS84
County: Elevation:
Lease Name: Well #:
Well Type: Oil Gas OG WSW Other:
SWD Permit #: ENHR Permit #:
Gas Storage Permit #:
Spud Date: Date Shut-In:

Table with 7 columns: Conductor, Surface, Production, Intermediate, Liner, Tubing. Rows include Size, Setting Depth, Amount of Cement, Top of Cement, Bottom of Cement.

Casing Fluid Level from Surface: How Determined? Date:
Casing Squeeze(s): to w / sacks of cement, to w / sacks of cement. Date:
Do you have a valid Oil & Gas Lease? Yes No
Depth and Type: Junk in Hole at Tools in Hole at Casing Leaks: Yes No Depth of casing leak(s):
Type Completion: ALT. I ALT. II Depth of: DV Tool: w / sacks of cement Port Collar: w / sack of cement
Packer Type: Size: Inch Set at: Feet
Total Depth: Plug Back Depth: Plug Back Method:

Geological Data:

Table with 4 columns: Formation Name, Formation Top, Formation Base, Completion Information. Rows 1 and 2.

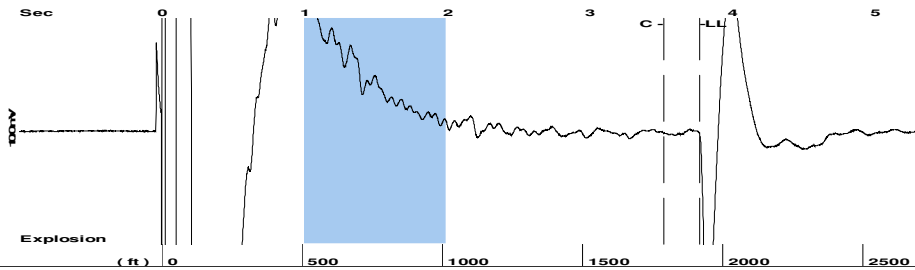
UNDER PENALTY OF PERJURY I HEREBY ATTEST THAT THE INFORMATION CONTAINED HEREIN IS TRUE AND CORRECT TO THE BEST OF MY KNOWLEDGE

Submitted Electronically

Do NOT Write in This Space - KCC USE ONLY
Date Tested: Results: Date Plugged: Date Repaired: Date Put Back in Service:
Review Completed by: Comments:
TA Approved: Yes Denied Date:

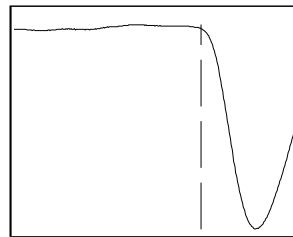
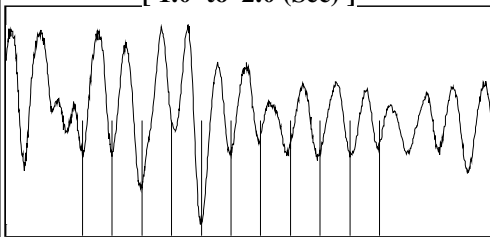
Mail to the Appropriate KCC Conservation Office:

Table with 2 columns: Office Address, Phone. Rows for District Office #1, #2, #3, #4.



Filter Type High Pass Automatic Collar Count Yes Time 3.767 sec
 Manual Acoustic Velo 1039.34 ft/s Manual JTS/sec 16.3934 Joints 60.458 Jts
 Depth 1916.52 ft

[1.0 to 2.0 (Sec)]



Analysis Method: Automatic

NO PRESSURE DATA AVAILABLE

Change in Pressure -0.01 psi PT15262
 Range 0 - ? psi
 Change in Time 0.25 min

Production Current Potential
 Oil - * - BBL/D
 Water - * - BBL/D
 Gas - * - Mscf/D

IPR Method Vogel
 PBHP/SBHP - * -
 Production Efficiency 0.0

Oil 40 deg.API
 Water 1.05 Sp.Gr.H2O
 Gas 0.95 Sp.Gr.AIR

Acoustic Velocity 1017.53 ft/s

Casing Pressure -0.6 psi (g)
 Casing Pressure Buildup -0.011 psi
 0.25 min
 Gas/Liquid Interface Pressure 0.3 psi (g)

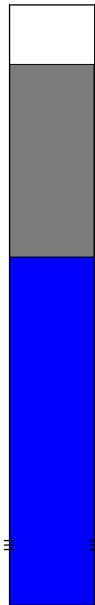
Liquid Level Depth 1916.52 ft

Pump Intake Depth - * - ft

Formation Depth 4780.00 ft

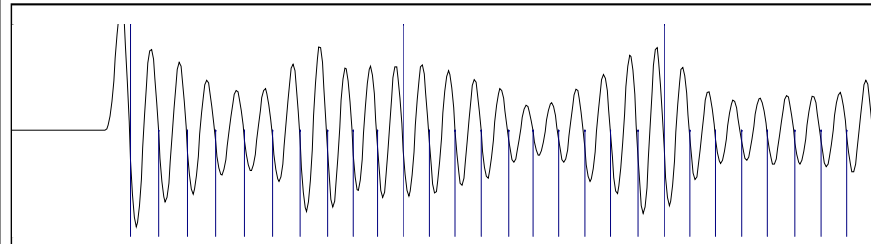
Formation Submergence
 Total Gaseous Liquid Column HT (TVD) 2863 ft
 Equivalent Gas Free Liquid HT (TVD) 2863 ft

Acoustic Test

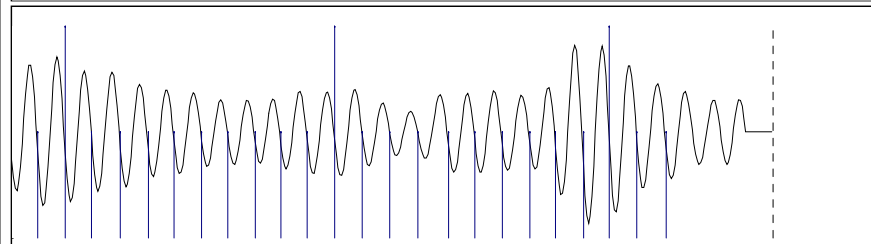


Producing
 Annular Gas Flow 0 Mscf/D
 % Liquid 100 %

Pump Intake - * - psi (g)
 Producing BHP 1302.2 psi (g)
 Static BHP 1254.3 psi (g)



16.28



15.79

Acoustic Velocity 1017.53 ft/s Joints counted 52
 Joints Per Second 16.0494 jts/sec Joints to liquid level 60.458
 Depth to liquid level 1916.52 ft Filter Width 14.3934 18.3934
 Automatic Collar Count Yes Time to 1st Collar 0.276 3.516

Conservation Division
District Office No. 1
210 E. Frontview, Suite A
Dodge City, KS 67801



Phone: 620-682-7933
<http://kcc.ks.gov/>

Susan K. Duffy, Chair
Dwight D. Keen, Commissioner
Andrew J. French, Commissioner

Laura Kelly, Governor

April 24, 2023

Michael E. Novy
Novy Oil & Gas, Inc.
PO BOX 559
GODDARD, KS 67052-0559

Re: Temporary Abandonment
API 15-171-20079-00-00
RHODA CRIST 1
NE/4 Sec.13-20S-34W
Scott County, Kansas

Dear Michael E. Novy:

"Your temporary abandonment (TA) application for the well listed above has been approved. In accordance with K.A.R. 82-3-111 the TA status of this well will expire 04/24/2024.

- * If you return this well to service or plug it, please notify the District Office.
- * If you sell this well you are required to file a Transfer of Operator form, T-1.
- * If the well will remain temporarily abandoned, you must submit a new TA application, CP-111, before 04/24/2024.

You may contact me at the number above if you have questions.

Very truly yours,

Michael Maier"