

KANSAS CORPORATION COMMISSION
OIL & GAS CONSERVATION DIVISION

Form must be Typed
Form must be signed

TEMPORARY ABANDONMENT WELL APPLICATION

All blanks must be complete

OPERATOR: License#
Name:
Address 1:
Address 2:
City: State: Zip:
Contact Person:
Phone:
Contact Person Email:
Field Contact Person:
Field Contact Person Phone:

API No. 15-
Spot Description:
Sec. Twp. S. R.
feet from N / S Line of Section
feet from E / W Line of Section
GPS Location: Lat: , Long:
Datum: NAD27 NAD83 WGS84
County: Elevation: GL KB
Lease Name: Well #:
Well Type: (check one) Oil Gas OG WSW Other:
SWD Permit #: ENHR Permit #:
Gas Storage Permit #:
Spud Date: Date Shut-In:

Table with 7 columns: Conductor, Surface, Production, Intermediate, Liner, Tubing. Rows include Size, Setting Depth, Amount of Cement, Top of Cement, Bottom of Cement.

Casing Fluid Level from Surface: How Determined? Date:
Casing Squeeze(s): to w / sacks of cement, to w / sacks of cement. Date:
Do you have a valid Oil & Gas Lease? Yes No
Depth and Type: Junk in Hole at Tools in Hole at Casing Leaks: Yes No Depth of casing leak(s):
Type Completion: ALT. I ALT. II Depth of: DV Tool: w / sacks of cement Port Collar: w / sack of cement
Packer Type: Size: Inch Set at: Feet
Total Depth: Plug Back Depth: Plug Back Method:

Geological Date:

Table with 4 columns: Formation Name, Formation Top, Formation Base, Completion Information. Rows 1 and 2.

UNDER PENALTY OF PERJURY I HEREBY ATTEST THAT THE INFORMATION CONTAINED HEREIN IS TRUE AND CORRECT TO THE BEST OF MY KNOWLEDGE

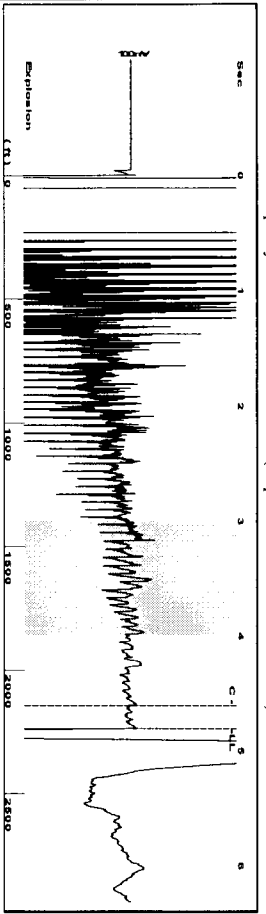
Submitted Electronically

Do NOT Write in This Space - KCC USE ONLY
Date Tested: Results: Date Plugged: Date Repaired: Date Put Back in Service:
Review Completed by: Comments:
TA Approved: Yes Denied Date:

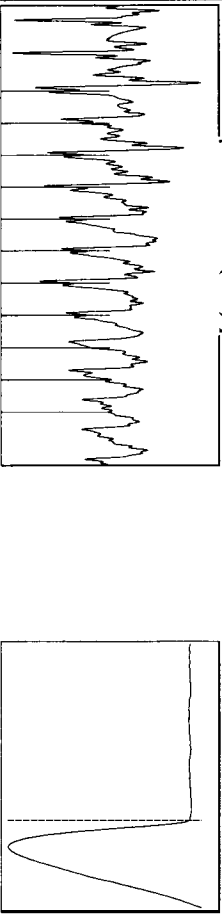
Mail to the Appropriate KCC Conservation Office:

Table with 3 columns: District Office, Address, Phone. Rows for District Office #1, #2, #3, #4.

Group: MsWells Well: Max Wells (acquired on: 04/25/23 13:46:32)



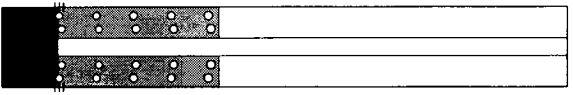
Filter Type High Pass Automatic Collar Count Yes
 Manual Acoustic Velocity 03.134 ft/s Manual JTS/sec 14.245
 Time 4.811 sec
 Joints 70.6181 Jts
 Depth 2238.59 ft



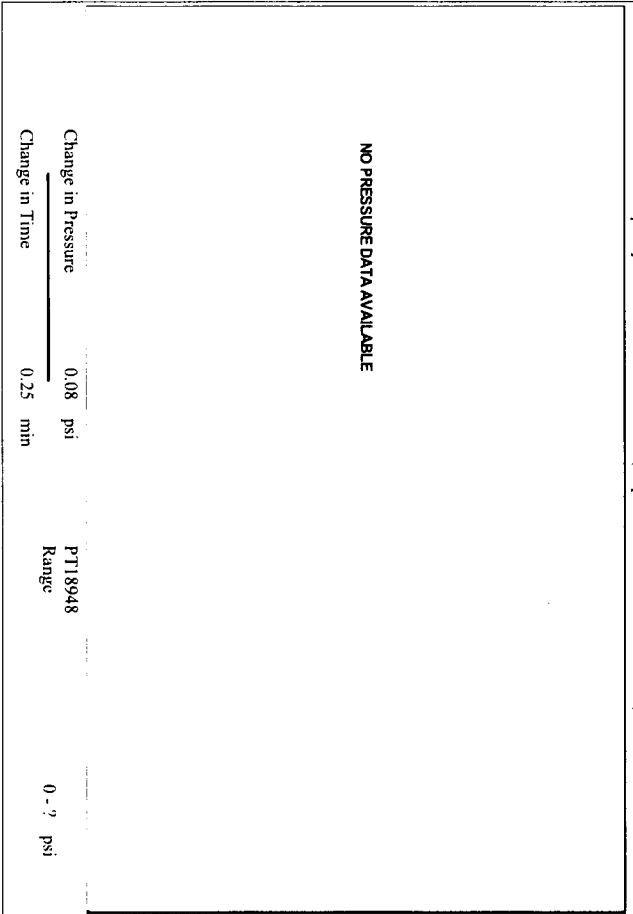
Analysis Method: Automatic

Group: MsWells Well: Max Wells (acquired on: 04/25/23 13:46:32)

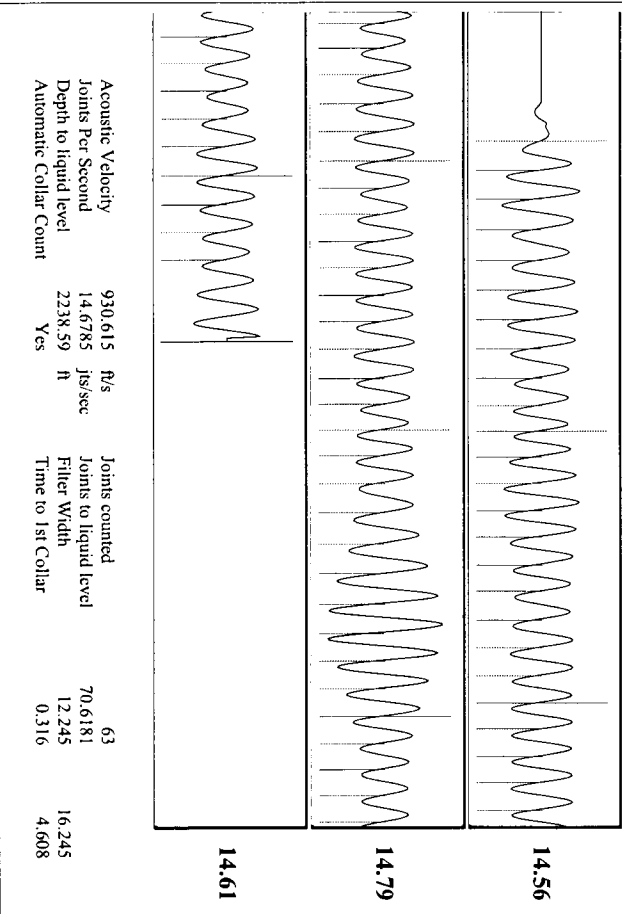
Production	Potential	Casing Pressure	Producing
Current - *-	0.0 BBL/D	-0.1 psi (g)	Annular Gas Flow
Water - *-	0.0 BBL/D	Casing Pressure Buildup 0.1 psi	% Liquid 76 %
Gas - *-	0.0 Mscf/D	0.25 min	
IPR Method	Vogel	Gas/Liquid Interface Pressure	7 Mscf/D
PBH/SHBP	0.32	1.1 psi (g)	
Production Efficiency	85.2		
Oil 40 deg.API	Liquid Level Depth		
Water 1.05 Sp.Gr.H2O	2238.59 ft		
Gas 1.04 Sp.Gr.AIR	Pump Intake Depth		
	3480.00 ft		
	Formation Depth		
	3470.00 ft		
Acoustic Velocity	930.615 ft/s		
Formation Submergence			
Total Gaseous Liquid Column HT (TVD)	1241 ft		
Equivalent Gas Free Liquid HT (TVD)	948 ft		
Acoustic Test			
		Pump Intake	
		323.9 psi (g)	
		Producing BHP	
		320.6 psi (g)	
		Static BHP	
		1024.1 psi (g)	



Group: MsWells Well: Max Wells (acquired on: 04/25/23 13:46:32)



Group: MsWells Well: Max Wells (acquired on: 04/25/23 13:46:32)



Acoustic Velocity	930.615 ft/s	Joints counted	63
Joints Per Second	14.6785 Jts/sec	Joints to liquid level	70.6181
Depth to liquid level	2238.59 ft	Filter Width	12.245
Automatic Collar Count	Yes	Time to 1st Collar	0.316

Conservation Division
District Office No. 2
3450 N. Rock Road
Building 600, Suite 601
Wichita, KS 67226



Phone: 316-337-7400
<http://kcc.ks.gov/>

Susan K. Duffy, Chair
Dwight D. Keen, Commissioner
Andrew J. French, Commissioner

Laura Kelly, Governor

April 27, 2023

Mike Kelso
Mike Kelso Oil, Inc.
PO BOX 467
CHASE, KS 67524-0467

Re: Temporary Abandonment
API 15-159-22823-00-00
MAX WELLS C 2
NE/4 Sec.34-20S-10W
Rice County, Kansas

Dear Mike Kelso:

"Your temporary abandonment (TA) application for the well listed above has been approved. In accordance with K.A.R. 82-3-111 the TA status of this well will expire 04/27/2024.

- * If you return this well to service or plug it, please notify the District Office.
- * If you sell this well you are required to file a Transfer of Operator form, T-1.
- * If the well will remain temporarily abandoned, you must submit a new TA application, CP-111, before 04/27/2024.

You may contact me at the number above if you have questions.

Very truly yours,

Virgil Clothier"