

KANSAS CORPORATION COMMISSION
OIL & GAS CONSERVATION DIVISION

TEMPORARY ABANDONMENT WELL APPLICATION

OPERATOR: License#
Name:
Address 1:
Address 2:
City: State: Zip:
Contact Person:
Phone:
Contact Person Email:
Field Contact Person:
Field Contact Person Phone:

API No. 15-
Spot Description:
Sec. Twp. S. R.
GPS Location: Lat, Long
Datum: NAD27, NAD83, WGS84
County: Elevation:
Lease Name: Well #:
Well Type: Oil, Gas, OG, WSW, Other
SWD Permit #: ENHR Permit #:
Gas Storage Permit #:
Spud Date: Date Shut-In:

Table with 7 columns: Conductor, Surface, Production, Intermediate, Liner, Tubing. Rows include Size, Setting Depth, Amount of Cement, Top of Cement, Bottom of Cement.

Casing Fluid Level from Surface: How Determined? Date:
Casing Squeeze(s): to w / sacks of cement, to w / sacks of cement. Date:
Do you have a valid Oil & Gas Lease? Yes No
Depth and Type: Junk in Hole at Tools in Hole at Casing Leaks: Yes No Depth of casing leak(s):
Type Completion: ALT. I ALT. II Depth of: DV Tool: w / sacks of cement Port Collar: w / sack of cement
Packer Type: Size: Inch Set at: Feet
Total Depth: Plug Back Depth: Plug Back Method:

Geological Date:

Table with 4 columns: Formation Name, Formation Top, Formation Base, Completion Information. Rows 1 and 2.

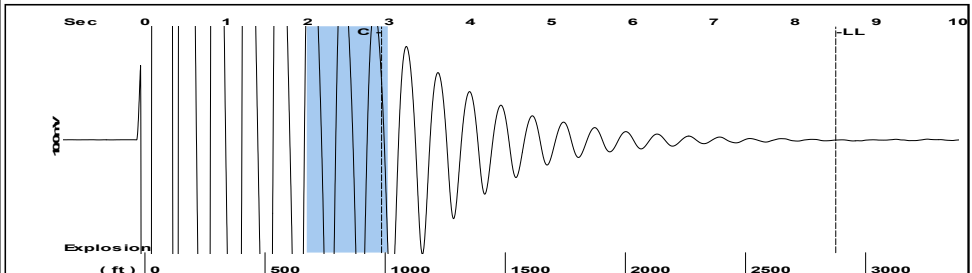
UNDER PENALTY OF PERJURY I HEREBY ATTEST THAT THE INFORMATION CONTAINED HEREIN IS TRUE AND CORRECT TO THE BEST OF MY KNOWLEDGE

Submitted Electronically

Form with fields: Do NOT Write in This Space - KCC USE ONLY, Date Tested, Results, Date Plugged, Date Repaired, Date Put Back in Service, Review Completed by, Comments, TA Approved: Yes Denied, Date.

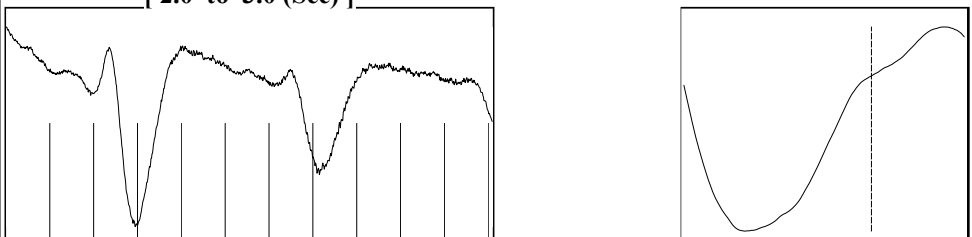
Mail to the Appropriate KCC Conservation Office:

Table with 3 columns: District Office #, Address, Phone. Rows 1-4.

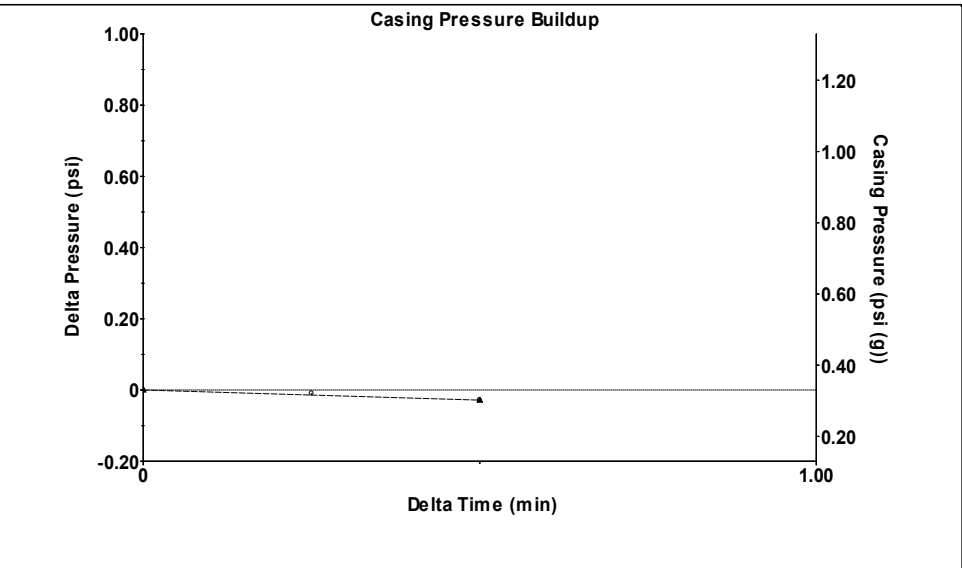


Filter Type High Pass Automatic Collar Count Yes Time 8.5 sec  
 Manual Acoustic Veloc 703.663 ft/s Manual JTS/sec 11.0988 Joints 90.7012 Jts  
 Depth 2875.23 ft

[ 2.0 to 3.0 (Sec) ]

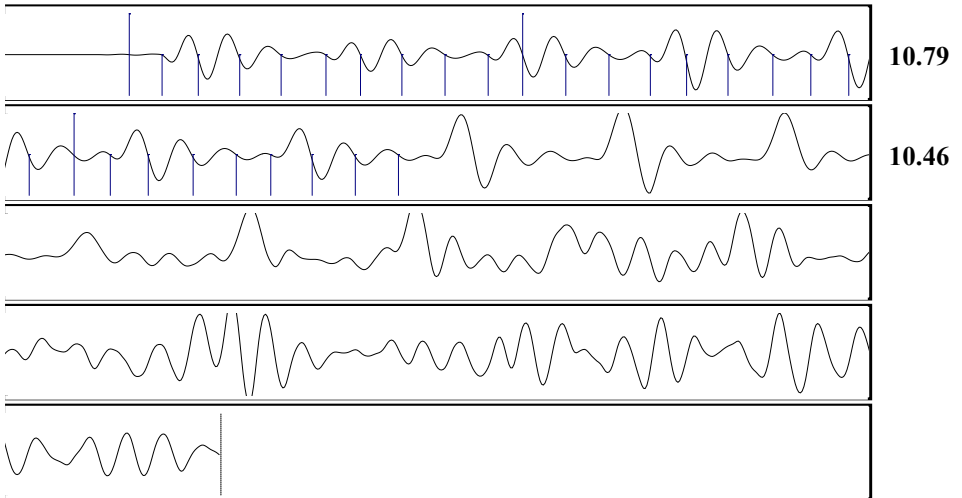


Analysis Method: Automatic



Change in Pressure -0.03 psi PT16854  
 Change in Time 0.50 min Range 0 - ? psi

Production Current	Potential	Casing Pressure	Producing
Oil - *-	- *- BBL/D	0.3 psi (g)	Annular Gas Flow
Water - *-	- *- BBL/D	Casing Pressure Buildup	0 Mscf/D
Gas - *-	- *- Mscf/D	-0.028 psi	% Liquid
		0.50 min	100 %
IPR Method	Vogel	Gas/Liquid Interface Pressure	
PBHP/SBHP	- *-	2.3 psi (g)	
Production Efficiency	0.0		
Oil 40 deg.API		Liquid Level Depth	
Water 1.05 Sp.Gr.H2O		2875.23 ft	
Gas 1.28 Sp.Gr.AIR		Pump Intake Depth	
		3600.00 ft	
Acoustic Velocity	676.524 ft/s	Formation Depth	
		3650.00 ft	
Formation Submergence		Pump Intake	
Total Gaseous Liquid Column HT (TVD)	725 ft	250.5 psi (g)	
Equivalent Gas Free Liquid HT (TVD)	725 ft	Producing BHP	
		273.2 psi (g)	
		Static BHP	
		- *- psi (g)	



Acoustic Velocity 676.524 ft/s Joints counted 28  
 Joints Per Second 10.6707 jts/sec Joints to liquid level 90.7012  
 Depth to liquid level 2875.23 ft Filter Width 9.09878 13.0988  
 Automatic Collar Count Yes Time to 1st Collar 0.288 2.912

Conservation Division  
District Office No. 4  
2301 E. 13th Street  
Hays, KS 67601-2651



Phone: 785-261-6250  
<http://kcc.ks.gov/>

Susan K. Duffy, Chair  
Dwight D. Keen, Commissioner  
Andrew J. French, Commissioner

Laura Kelly, Governor

April 27, 2023

Zach Patterson  
Patterson Energy LLC  
PO BOX 400  
HAYS, KS 67601-0400

Re: Temporary Abandonment  
API 15-195-00733-00-00  
COOK 9  
NW/4 Sec.02-11S-21W  
Trego County, Kansas

Dear Zach Patterson:

"Your temporary abandonment (TA) application for the well listed above has been approved. In accordance with K.A.R. 82-3-111 the TA status of this well will expire 04/27/2024.

- \* If you return this well to service or plug it, please notify the District Office.
- \* If you sell this well you are required to file a Transfer of Operator form, T-1.
- \* If the well will remain temporarily abandoned, you must submit a new TA application, CP-111, before 04/27/2024.

You may contact me at the number above if you have questions.

Very truly yours,

RICHARD WILLIAMS"