

KANSAS CORPORATION COMMISSION
OIL & GAS CONSERVATION DIVISION

TEMPORARY ABANDONMENT WELL APPLICATION

OPERATOR: License# \_\_\_\_\_
Name: \_\_\_\_\_
Address 1: \_\_\_\_\_
Address 2: \_\_\_\_\_
City: \_\_\_\_\_ State: \_\_\_\_\_ Zip: \_\_\_\_\_ + \_\_\_\_\_
Contact Person: \_\_\_\_\_
Phone:( \_\_\_\_\_ ) \_\_\_\_\_
Contact Person Email: \_\_\_\_\_
Field Contact Person: \_\_\_\_\_
Field Contact Person Phone: ( \_\_\_\_\_ ) \_\_\_\_\_

API No. 15- \_\_\_\_\_
Spot Description: \_\_\_\_\_
- - - - - Sec. \_\_\_\_\_ Twp. \_\_\_\_\_ S. R. \_\_\_\_\_ E W
\_\_\_\_\_ feet from N / S Line of Section
\_\_\_\_\_ feet from E / W Line of Section
GPS Location: Lat: \_\_\_\_\_, Long: \_\_\_\_\_
Datum: NAD27 NAD83 WGS84
County: \_\_\_\_\_ Elevation: \_\_\_\_\_ GL KB
Lease Name: \_\_\_\_\_ Well #: \_\_\_\_\_
Well Type: (check one) Oil Gas OG WSW Other: \_\_\_\_\_
SWD Permit #: \_\_\_\_\_ ENHR Permit #: \_\_\_\_\_
Gas Storage Permit #: \_\_\_\_\_
Spud Date: \_\_\_\_\_ Date Shut-In: \_\_\_\_\_

Table with 7 columns: Conductor, Surface, Production, Intermediate, Liner, Tubing. Rows include Size, Setting Depth, Amount of Cement, Top of Cement, Bottom of Cement.

Casing Fluid Level from Surface: \_\_\_\_\_ How Determined? \_\_\_\_\_ Date: \_\_\_\_\_
Casing Squeeze(s): \_\_\_\_\_ to \_\_\_\_\_ w / \_\_\_\_\_ sacks of cement, \_\_\_\_\_ to \_\_\_\_\_ w / \_\_\_\_\_ sacks of cement. Date: \_\_\_\_\_
Do you have a valid Oil & Gas Lease? Yes No
Depth and Type: Junk in Hole at \_\_\_\_\_ Tools in Hole at \_\_\_\_\_ Casing Leaks: Yes No Depth of casing leak(s): \_\_\_\_\_
Type Completion: ALT. I ALT. II Depth of: DV Tool: \_\_\_\_\_ w / \_\_\_\_\_ sacks of cement Port Collar: \_\_\_\_\_ w / \_\_\_\_\_ sack of cement
Packer Type: \_\_\_\_\_ Size: \_\_\_\_\_ Inch Set at: \_\_\_\_\_ Feet
Total Depth: \_\_\_\_\_ Plug Back Depth: \_\_\_\_\_ Plug Back Method: \_\_\_\_\_

Geological Data:

Table with 4 columns: Formation Name, Formation Top, Formation Base, Completion Information. Rows 1 and 2.

UNDER PENALTY OF PERJURY I HEREBY ATTEST THAT THE INFORMATION CONTAINED HEREIN IS TRUE AND CORRECT TO THE BEST OF MY KNOWLEDGE

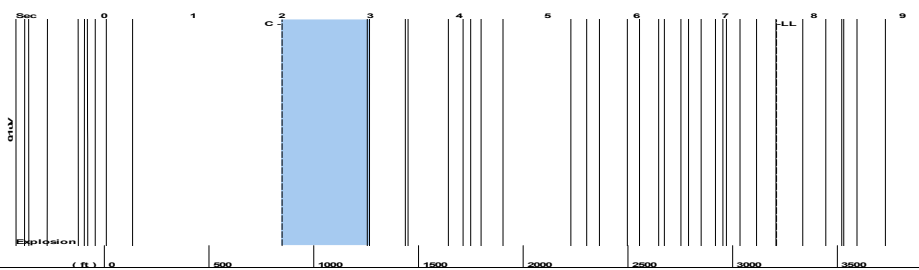
Submitted Electronically

Do NOT Write in This Space - KCC USE ONLY
Date Tested: \_\_\_\_\_ Results: \_\_\_\_\_ Date Plugged: \_\_\_\_\_ Date Repaired: \_\_\_\_\_ Date Put Back in Service: \_\_\_\_\_
Review Completed by: \_\_\_\_\_ Comments: \_\_\_\_\_
TA Approved: Yes Denied Date: \_\_\_\_\_

Mail to the Appropriate KCC Conservation Office:

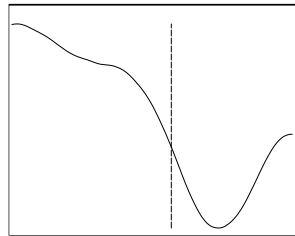
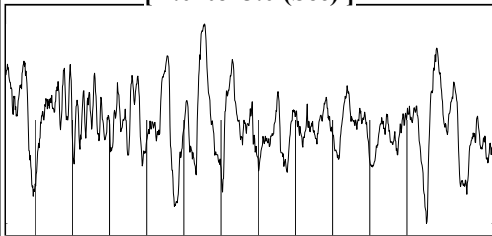
Table with 3 columns: District Office, Address, Phone. Rows for District Office #1, #2, #3, #4.

Group: MyWells Well: BERTRAND # 1 (acquired on: 04/17/23 13:08:18 )



Filter Type High Pass Automatic Collar Count Yes Time 7.579 sec  
 Manual Acoustic Veloc 829.843 ft/s Manual JTS/sec 13.089 Joints 101.246 Jts  
 Depth 3209.50 ft

[ 2.0 to 3.0 (Sec) ]



**Analysis Method: Automatic**

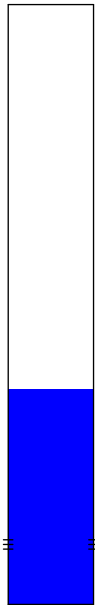
Group: MyWells Well: BERTRAND # 1 (acquired on: 04/17/23 13:08:18 )

NO PRESSURE DATA AVAILABLE

Change in Pressure 0.00 psi PT13682  
 Range 0 - ? psi  
 Change in Time 0.00 min

Group: MyWells Well: BERTRAND # 1 (acquired on: 04/17/23 13:08:18 )

<b>Production</b>	<b>Potential</b>	<b>Casing Pressure</b>
Current		-14.7 psi (g)
Oil - *-	- *- BBL/D	Casing Pressure Buildup
Water - *-	- *- BBL/D	- *- psi
Gas - *-	- *- Mscf/D	- *- min
		Gas/Liquid Interface Pressure
		- *- psi (g)
<b>IPR Method</b>	<b>Vogel</b>	<b>Liquid Level Depth</b>
PBHP/SBHP	- *-	3209.50 ft
Production Efficiency	0.0	<b>Pump Intake Depth</b>
		- *- ft
<b>Oil</b> 40 deg.API		<b>Formation Depth</b>
<b>Water</b> 1.05 Sp.Gr.H2O		4750.00 ft
<b>Gas</b> 0.70 Sp.Gr.AIR		
<b>Acoustic Velocity</b> 846.947 ft/s		
<b>Formation Submergence</b>		
Total Gaseous Liquid Column HT (TVD)	- *- ft	
Equivalent Gas Free Liquid HT (TVD)	- *- ft	



**Producing**

Annular Gas Flow - \*- Mscf/D

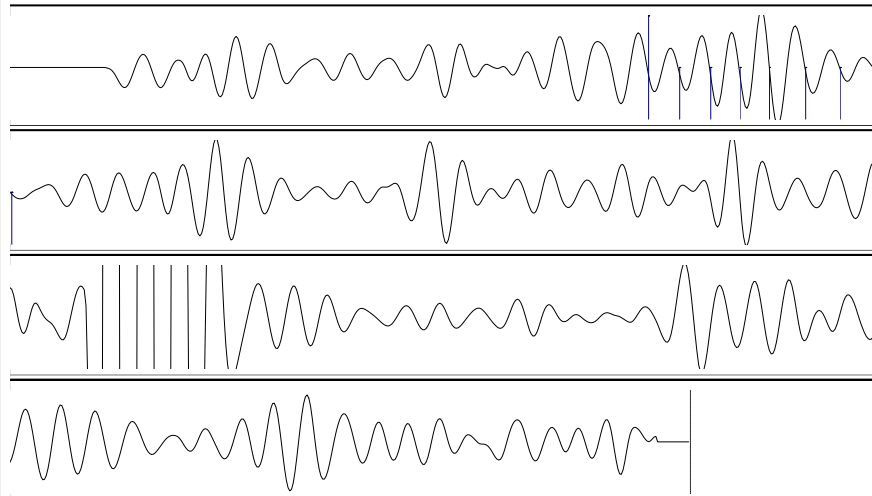
% Liquid 100 %

**Pump Intake** - \*- psi (g)

**Producing BHP** - \*- psi (g)

**Static BHP** - \*- psi (g)

Group: MyWells Well: BERTRAND # 1 (acquired on: 04/17/23 13:08:18 )



Acoustic Velocity	846.947 ft/s	Joints counted	7
Joints Per Second	13.3588 jts/sec	Joints to liquid level	101.246
Depth to liquid level	3209.5 ft	Filter Width	11.089 15.089
Automatic Collar Count	Yes	Time to 1st Collar	1.48 2.004

Conservation Division  
District Office No. 4  
2301 E. 13th Street  
Hays, KS 67601-2651



Phone: 785-261-6250  
<http://kcc.ks.gov/>

Susan K. Duffy, Chair  
Dwight D. Keen, Commissioner  
Andrew J. French, Commissioner

Laura Kelly, Governor

April 28, 2023

Octavio Morales  
American Warrior, Inc.  
PO BOX 399  
GARDEN CITY, KS 67846-0399

Re: Temporary Abandonment  
API 15-109-20673-00-00  
BERTRAND 1  
NW/4 Sec.26-11S-33W  
Logan County, Kansas

Dear Octavio Morales:

"Your temporary abandonment (TA) application for the well listed above has been approved. In accordance with K.A.R. 82-3-111 the TA status of this well will expire 04/28/2024.

- \* If you return this well to service or plug it, please notify the District Office.
- \* If you sell this well you are required to file a Transfer of Operator form, T-1.
- \* If the well will remain temporarily abandoned, you must submit a new TA application, CP-111, before 04/28/2024.

You may contact me at the number above if you have questions.

Very truly yours,

RICHARD WILLIAMS"