

KANSAS CORPORATION COMMISSION
OIL & GAS CONSERVATION DIVISION

TEMPORARY ABANDONMENT WELL APPLICATION

OPERATOR: License#
Name:
Address 1:
Address 2:
City: State: Zip:
Contact Person:
Phone:
Contact Person Email:
Field Contact Person:
Field Contact Person Phone:

API No. 15-
Spot Description:
Sec. Twp. S. R.
GPS Location: Lat: Long:
Datum: NAD27 NAD83 WGS84
County: Elevation:
Lease Name: Well #:
Well Type: Oil Gas OG WSW Other:
SWD Permit #: ENHR Permit #:
Gas Storage Permit #:
Spud Date: Date Shut-In:

Table with 7 columns: Conductor, Surface, Production, Intermediate, Liner, Tubing. Rows include Size, Setting Depth, Amount of Cement, Top of Cement, Bottom of Cement.

Casing Fluid Level from Surface: How Determined? Date:
Casing Squeeze(s): to w / sacks of cement, to w / sacks of cement. Date:
Do you have a valid Oil & Gas Lease? Yes No
Depth and Type: Junk in Hole at Tools in Hole at Casing Leaks: Yes No Depth of casing leak(s):
Type Completion: ALT. I ALT. II Depth of: DV Tool: w / sacks of cement Port Collar: w / sack of cement
Packer Type: Size: Inch Set at: Feet
Total Depth: Plug Back Depth: Plug Back Method:

Geological Data:

Table with 4 columns: Formation Name, Formation Top, Formation Base, Completion Information. Rows 1 and 2.

UNDER PENALTY OF PERJURY I HEREBY ATTEST THAT THE INFORMATION CONTAINED HEREIN IS TRUE AND CORRECT TO THE BEST OF MY KNOWLEDGE

Submitted Electronically

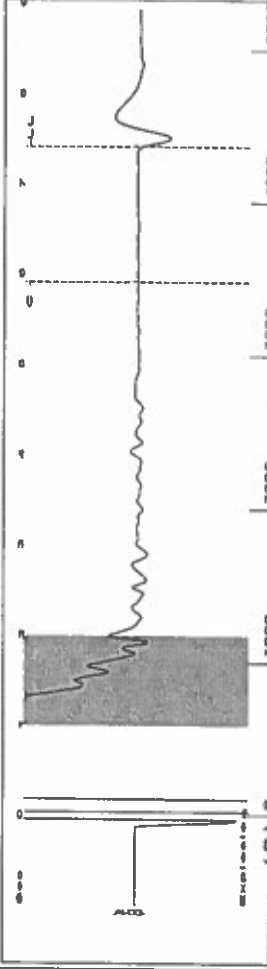
Do NOT Write in This Space - KCC USE ONLY
Date Tested: Results: Date Plugged: Date Repaired: Date Put Back in Service:
Review Completed by: Comments:
TA Approved: Yes Denied Date:

Mail to the Appropriate KCC Conservation Office:

Table with 3 columns: District Office #, Address, Phone. Rows 1-4.

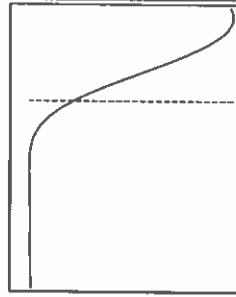
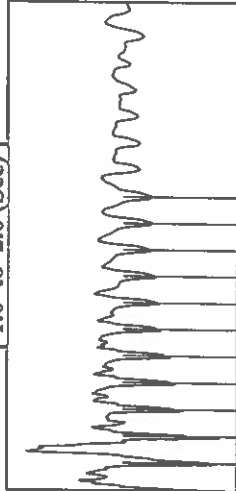


Group: TAD Well: MTU 401 (acquired on: 04/17/23 11:09:48)



Filter Type High Pass Automatic Collar Count Yes  
 Manual Acoustic Veloc 161.17 ft/s Manual JTS/sec 18.315  
 Time 7.408 sec  
 Joints 137.915 Jts  
 Depth 4371.90 ft

[ 1.0 to 2.0 (Sec) ]

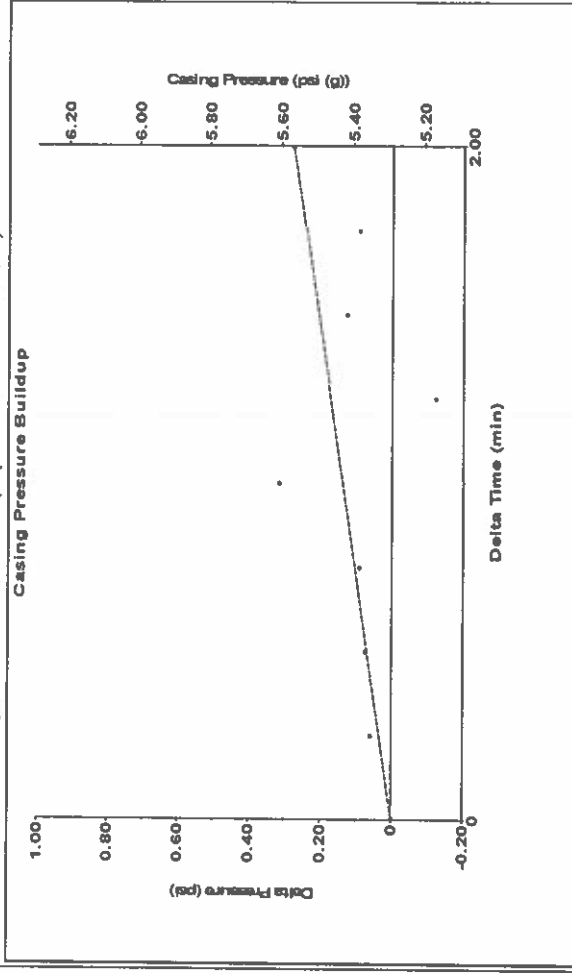


Analysis Method: Automatic

Group: TAD Well: MTU 401 (acquired on: 04/17/23 11:09:48)

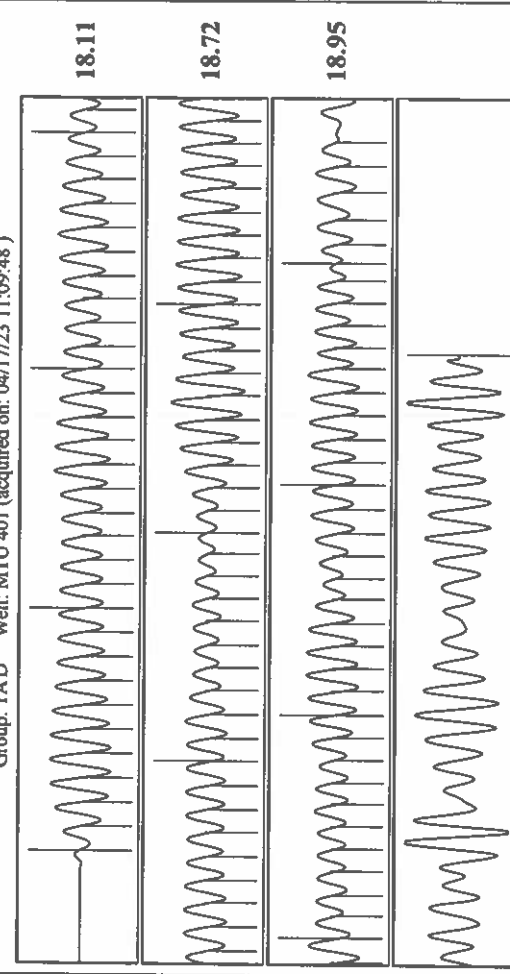
Production Current	Potential	Casing Pressure	Producing
Oil -*- BBL/D	-*- BBL/D	5.3 psi (g)	Annular Gas Flow 5 Mscf/D
Water -*- BBL/D	-*- BBL/D	0.3 psi	% Liquid 79 %
Gas -*- Mscf/D	-*- Mscf/D	2.00 min	Pump Intake 145.6 psi (g)
IPR Method	Vogel	Gas/Liquid Interface Pressure	Producing BHP 145.6 psi (g)
PBHP/SBHP	-*-	7.8 psi (g)	Static BHP -*- psi (g)
Production Efficiency	0.0	Liquid Level Depth	
Oil 40 deg API		4371.90 ft	
Water 1.05 Sp.Gr.H2O		Pump Intake Depth	
Gas 0.82 Sp.Gr.AIR		4883.00 ft	
Acoustic Velocity	1180.32 ft/s	Formation Depth	
		4883.00 ft	
Formation Submergence			
Total Gaseous Liquid Column HT (TVD)	511 ft		
Equivalent Gas Free Liquid HT (TVD)	406 ft		
Acoustic Test			

Group: TAD Well: MTU 401 (acquired on: 04/17/23 11:09:48)



Change in Pressure 0.28 psi PT 14654 Range  
 Change in Time 2.00 min

Group: TAD Well: MTU 401 (acquired on: 04/17/23 11:09:48)



Acoustic Velocity 1180.32 ft/s Joints counted 105  
 Joints Per Second 18.617 jts/sec Joints to liquid level 137.915  
 Depth to liquid level 4371.9 ft Filter Width 20.315  
 Automatic Collar Count Yes Time to 1st Collar 0.26 5.9

May 04, 2023

Katherine McClurkan  
Merit Energy Company, LLC  
13727 Noel Road, Suite 1200  
Dallas, TX 75240-7362

Re: Temporary Abandonment  
API 15-055-10029-00-01  
MTU 401  
NW/4 Sec.27-24S-33W  
Finney County, Kansas

Dear Katherine McClurkan:

"Your temporary abandonment (TA) application for the well listed above has been approved. In accordance with K.A.R. 82-3-111 the TA status of this well will expire 05/04/2024.

- \* If you return this well to service or plug it, please notify the District Office.
- \* If you sell this well you are required to file a Transfer of Operator form, T-1.
- \* If the well will remain temporarily abandoned, you must submit a new TA application, CP-111, before 05/04/2024.

You may contact me at the number above if you have questions.

Very truly yours,

Michael Maier"