

KANSAS CORPORATION COMMISSION
OIL & GAS CONSERVATION DIVISION

TEMPORARY ABANDONMENT WELL APPLICATION

OPERATOR: License#
Name:
Address 1:
Address 2:
City: State: Zip:
Contact Person:
Phone:
Contact Person Email:
Field Contact Person:
Field Contact Person Phone:

API No. 15-
Spot Description:
Sec. Twp. S. R.
GPS Location: Lat, Long
Datum: NAD27, NAD83, WGS84
County: Elevation:
Lease Name: Well #:
Well Type: Oil, Gas, OG, WSW, Other
SWD Permit #: ENHR Permit #:
Gas Storage Permit #:
Spud Date: Date Shut-In:

Table with 7 columns: Conductor, Surface, Production, Intermediate, Liner, Tubing. Rows include Size, Setting Depth, Amount of Cement, Top of Cement, Bottom of Cement.

Casing Fluid Level from Surface: How Determined? Date:
Casing Squeeze(s): to w / sacks of cement, to w / sacks of cement. Date:
Do you have a valid Oil & Gas Lease? Yes No
Depth and Type: Junk in Hole at Tools in Hole at Casing Leaks: Yes No Depth of casing leak(s):
Type Completion: ALT. I ALT. II Depth of: DV Tool: w / sacks of cement Port Collar: w / sack of cement
Packer Type: Size: Inch Set at: Feet
Total Depth: Plug Back Depth: Plug Back Method:

Geological Date:

Table with 4 columns: Formation Name, Formation Top, Formation Base, Completion Information. Rows 1 and 2.

UNDER PENALTY OF PERJURY I HEREBY ATTEST THAT THE INFORMATION CONTAINED HEREIN IS TRUE AND CORRECT TO THE BEST OF MY KNOWLEDGE

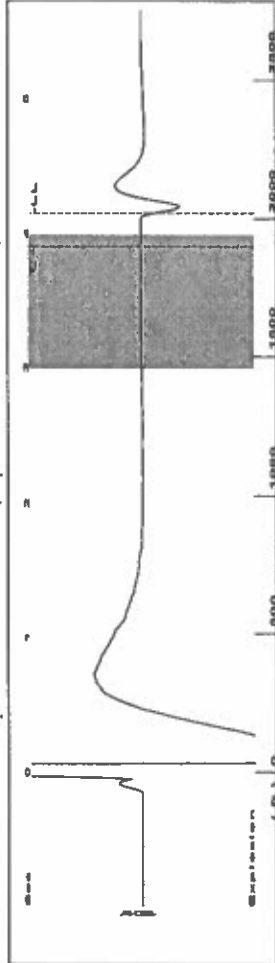
Submitted Electronically

Do NOT Write in This Space - KCC USE ONLY
Date Tested: Results: Date Plugged: Date Repaired: Date Put Back in Service:
Review Completed by: Comments:
TA Approved: Yes Denied Date:

Mail to the Appropriate KCC Conservation Office:

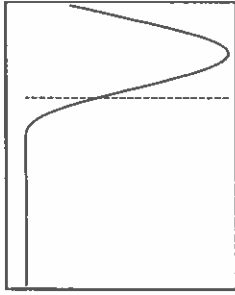
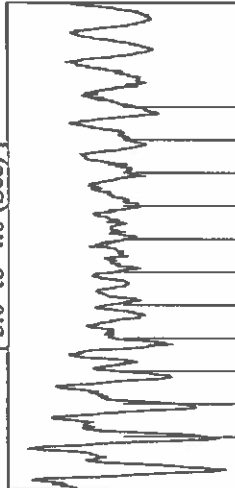
Table with 2 columns: Office Address, Phone. Rows for District Office #1, #2, #3, #4.

Group: TAD Well: Hands B (acquired on: 04/19/23 14:34:01)

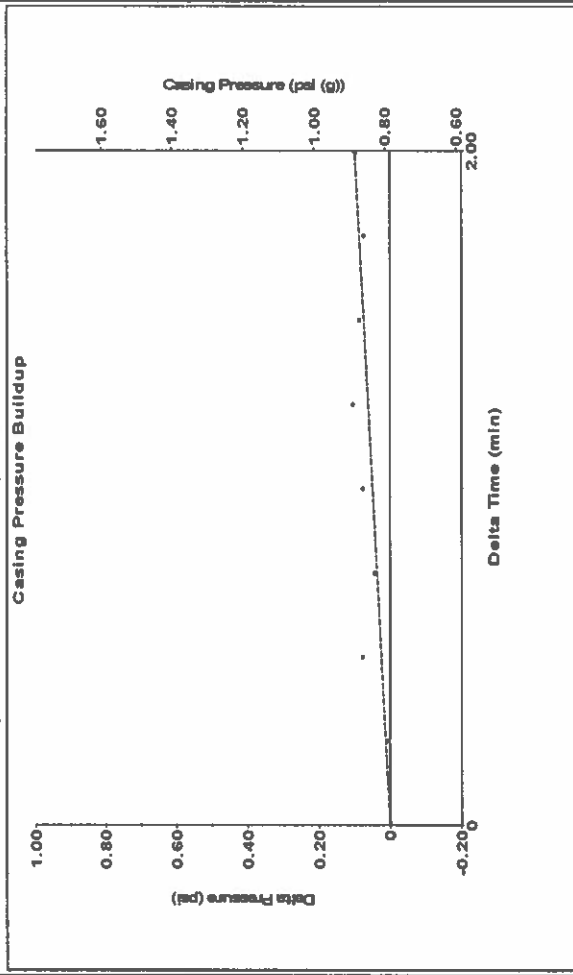


Filter Type High Pass Automatic Collar Count Yes
 Manual Acoustic Velocity 937.87 ft/s Manual JTS/sec 14.7929
 Time 4.15 sec
 Joints 63.7061 Jts
 Depth 2019.48 ft

[3.0 to 4.0 (Sec)]



Group: TAD Well: Hands B (acquired on: 04/19/23 14:34:01)



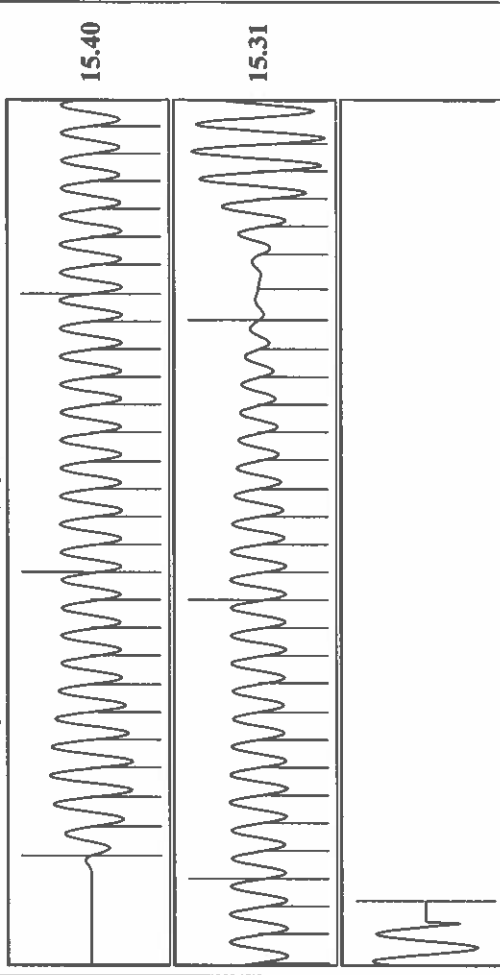
Change in Pressure 0.10 psi PT 14654 Range
 Change in Time 2.00 min

Analysis Method: Automatic

Group: TAD Well: Hands B (acquired on: 04/19/23 14:34:01)

Production	Potential	Casing Pressure	0.8 psi (g)
Oil	- * - BBL/D	Casing Pressure Buildup	0.099 psi
Water	- * - BBL/D	Gas/Liquid Interface Pressure	1.9 psi (g)
Gas	- * - Mscf/D		
IPR Method	Vogel	Liquid Level Depth	2019.48 ft
PBHP/SBHP	- * -	Pump Intake Depth	4994.00 ft
Production Efficiency	0.0	Formation Depth	5049.00 ft
Oil	40 deg-API		
Water	1.05 Sp.Gr.H2O		
Gas	0.99 Sp.Gr.AIR		
Acoustic Velocity	973.246 ft/s		
Formation Submergence			
Total Gaseous Liquid Column HT (TVD)	2975 ft		
Equivalent Gas Free Liquid HT (TVD)	2880 ft		
Acoustic Test			
Producing			
Annular Gas Flow	1 Mscf/D		
% Liquid	97 %		
Pump Intake	946.8 psi (g)		
Producing BHP	971.2 psi (g)		
Static BHP	- * - psi (g)		

Group: TAD Well: Hands B (acquired on: 04/19/23 14:34:01)



Acoustic Velocity 973.246 ft/s Joints counted 56
 Joints Per Second 15.3509 jts/sec Joints to liquid level 63.7061
 Depth to liquid level 2019.48 ft Filter Width 16.7929
 Automatic Collar Count Yes Time to 1st Collar 0.252 3.9

May 04, 2023

Katherine McClurkan
Merit Energy Company, LLC
13727 Noel Road, Suite 1200
Dallas, TX 75240-7362

Re: Temporary Abandonment
API 15-055-22287-00-02
Hands B 2
SE/4 Sec.04-26S-33W
Finney County, Kansas

Dear Katherine McClurkan:

"Your temporary abandonment (TA) application for the well listed above has been approved. In accordance with K.A.R. 82-3-111 the TA status of this well will expire 05/04/2024.

- * If you return this well to service or plug it, please notify the District Office.
- * If you sell this well you are required to file a Transfer of Operator form, T-1.
- * If the well will remain temporarily abandoned, you must submit a new TA application, CP-111, before 05/04/2024.

You may contact me at the number above if you have questions.

Very truly yours,

Michael Maier"