

KANSAS CORPORATION COMMISSION
OIL & GAS CONSERVATION DIVISION

Form must be Typed
Form must be signed

TEMPORARY ABANDONMENT WELL APPLICATION

All blanks must be complete

OPERATOR: License#
Name:
Address 1:
Address 2:
City: State: Zip:
Contact Person:
Phone:
Contact Person Email:
Field Contact Person:
Field Contact Person Phone:

API No. 15-
Spot Description:
Sec. Twp. S. R.
GPS Location: Lat, Long
Datum: NAD27, NAD83, WGS84
County: Elevation:
Lease Name: Well #:
Well Type: Oil, Gas, OG, WSW, Other
SWD Permit #: ENHR Permit #:
Gas Storage Permit #:
Spud Date: Date Shut-In:

Table with 7 columns: Conductor, Surface, Production, Intermediate, Liner, Tubing. Rows include Size, Setting Depth, Amount of Cement, Top of Cement, Bottom of Cement.

Casing Fluid Level from Surface: How Determined? Date:
Casing Squeeze(s): to w / sacks of cement, to w / sacks of cement. Date:
Do you have a valid Oil & Gas Lease? Yes No
Depth and Type: Junk in Hole at Tools in Hole at Casing Leaks: Yes No Depth of casing leak(s):
Type Completion: ALT. I ALT. II Depth of: DV Tool: w / sacks of cement Port Collar: w / sack of cement
Packer Type: Size: Inch Set at: Feet
Total Depth: Plug Back Depth: Plug Back Method:

Geological Data:

Table with 4 columns: Formation Name, Formation Top, Formation Base, Completion Information. Rows 1 and 2.

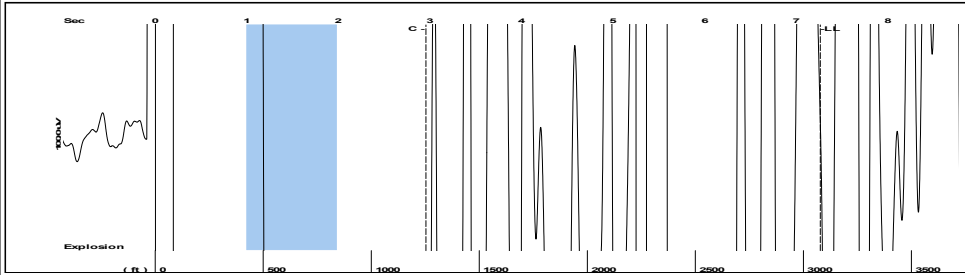
UNDER PENALTY OF PERJURY I HEREBY ATTEST THAT THE INFORMATION CONTAINED HEREIN IS TRUE AND CORRECT TO THE BEST OF MY KNOWLEDGE

Submitted Electronically

Do NOT Write in This Space - KCC USE ONLY
Date Tested: Results: Date Plugged: Date Repaired: Date Put Back in Service:
Review Completed by: Comments:
TA Approved: Yes Denied Date:

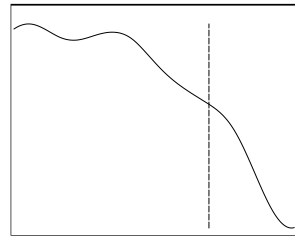
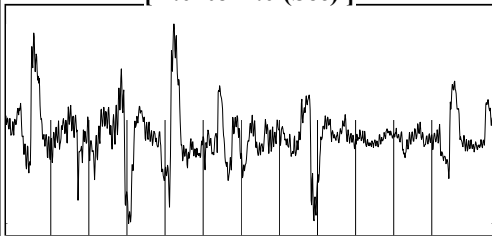
Mail to the Appropriate KCC Conservation Office:

Table with 3 columns: District Office #, Address, Phone. Rows 1-4.



Filter Type High Pass Automatic Collar Count Yes Time 7.261 sec
 Manual Acoustic Veloc 809.706 ft/s Manual JTS/sec 12.7714 Joints 97.0948 Jts
 Depth 3077.90 ft

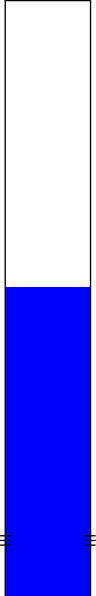
[1.0 to 2.0 (Sec)]

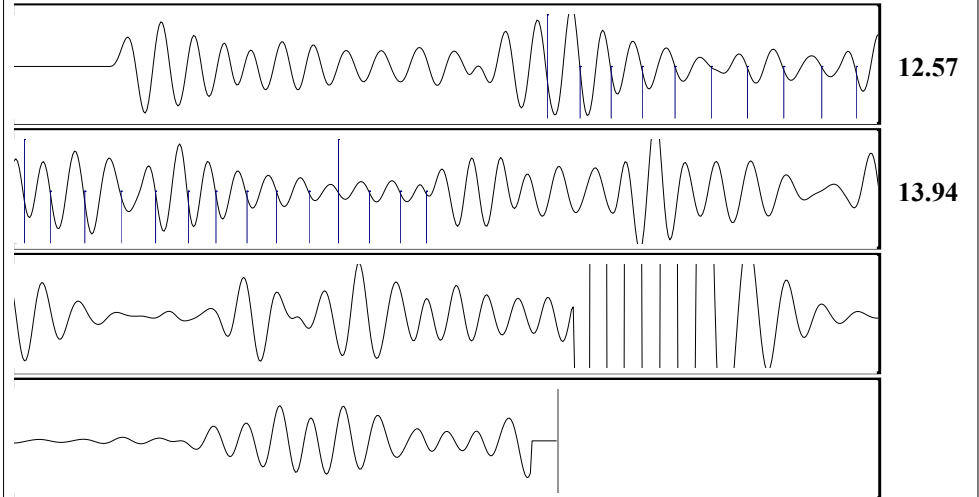


Analysis Method: Automatic



Change in Pressure 0.00 psi PT13682
 Range 0 - ? psi
 Change in Time 0.00 min

Production	Potential	Casing Pressure		Producing
Current		-14.7 psi (g)		Annular Gas Flow
Oil - * -	- * - BBL/D	Casing Pressure Buildup		- * - Mscf/D
Water - * -	- * - BBL/D	- * - psi		% Liquid
Gas - * -	- * - Mscf/D	- * - min		100 %
IPR Method	Vogel	Gas/Liquid Interface Pressure		
PBHP/SBHP	- * -	- * - psi (g)		
Production Efficiency	0.0	Liquid Level Depth		
Oil 40 deg.API		3077.90 ft		
Water 1.05 Sp.Gr.H2O		Pump Intake Depth		
Gas 0.70 Sp.Gr.AIR		- * - ft		
Acoustic Velocity	847.791 ft/s	Formation Depth		
		6500.00 ft		
Formation Submergence		Pump Intake		
Total Gaseous Liquid Column HT (TVD)		- * - psi (g)		
Equivalent Gas Free Liquid HT (TVD)		Producing BHP		
		- * - psi (g)		
Acoustic Test		Static BHP		
		- * - psi (g)		



Acoustic Velocity 847.791 ft/s Joints counted 23
 Joints Per Second 13.3721 jts/sec Joints to liquid level 97.0948
 Depth to liquid level 3077.9 ft Filter Width 10.7714 14.7714
 Automatic Collar Count Yes Time to 1st Collar 1.236 2.956

May 08, 2023

Octavio Morales
Palmer Oil, Inc.
3118 N. CUMMINGS RD.
PO BOX 399
GARDEN CITY, KS 67846-0399

Re: Temporary Abandonment
API 15-189-22601-00-00
UPC 23 1
SW/4 Sec.23-32S-37W
Stevens County, Kansas

Dear Octavio Morales:

"Your temporary abandonment (TA) application for the well listed above has been approved. In accordance with K.A.R. 82-3-111 the TA status of this well will expire 05/08/2024.

- * If you return this well to service or plug it, please notify the District Office.
- * If you sell this well you are required to file a Transfer of Operator form, T-1.
- * If the well will remain temporarily abandoned, you must submit a new TA application, CP-111, before 05/08/2024.

You may contact me at the number above if you have questions.

Very truly yours,

Michael Maier"