

KANSAS CORPORATION COMMISSION
OIL & GAS CONSERVATION DIVISION

Form must be Typed
Form must be signed

TEMPORARY ABANDONMENT WELL APPLICATION

All blanks must be complete

OPERATOR: License#
Name:
Address 1:
Address 2:
City: State: Zip:
Contact Person:
Phone:
Contact Person Email:
Field Contact Person:
Field Contact Person Phone:

API No. 15-
Spot Description:
Sec. Twp. S. R.
feet from N / S Line of Section
feet from E / W Line of Section
GPS Location: Lat: , Long:
Datum: NAD27 NAD83 WGS84
County: Elevation: GL KB
Lease Name: Well #:
Well Type: Oil Gas OG WSW Other:
SWD Permit #: ENHR Permit #:
Gas Storage Permit #:
Spud Date: Date Shut-In:

Table with 7 columns: Conductor, Surface, Production, Intermediate, Liner, Tubing. Rows include Size, Setting Depth, Amount of Cement, Top of Cement, Bottom of Cement.

Casing Fluid Level from Surface: How Determined? Date:
Casing Squeeze(s): to w / sacks of cement, to w / sacks of cement. Date:
Do you have a valid Oil & Gas Lease? Yes No
Depth and Type: Junk in Hole at Tools in Hole at Casing Leaks: Yes No Depth of casing leak(s):
Type Completion: ALT. I ALT. II Depth of: DV Tool: w / sacks of cement Port Collar: w / sack of cement
Packer Type: Size: Inch Set at: Feet
Total Depth: Plug Back Depth: Plug Back Method:

Geological Data:

Table with 4 columns: Formation Name, Formation Top, Formation Base, Completion Information. Rows 1 and 2.

UNDER PENALTY OF PERJURY I HEREBY ATTEST THAT THE INFORMATION CONTAINED HEREIN IS TRUE AND CORRECT TO THE BEST OF MY KNOWLEDGE

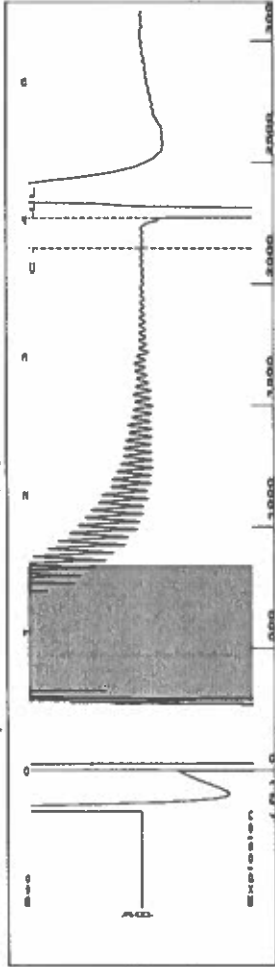
Submitted Electronically

Do NOT Write in This Space - KCC USE ONLY
Date Tested: Results: Date Plugged: Date Repaired: Date Put Back in Service:
Review Completed by: Comments:
TA Approved: Yes Denied Date:

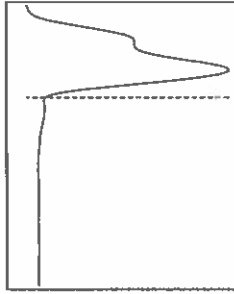
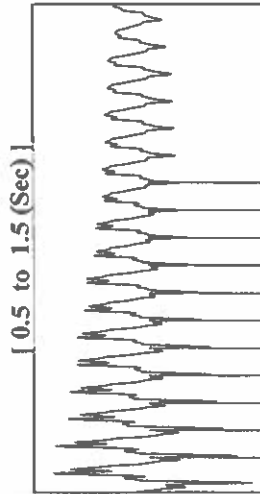
Mail to the Appropriate KCC Conservation Office:

Table with 3 columns: District Office, Address, Phone. Rows for District Office #1, #2, #3, #4.

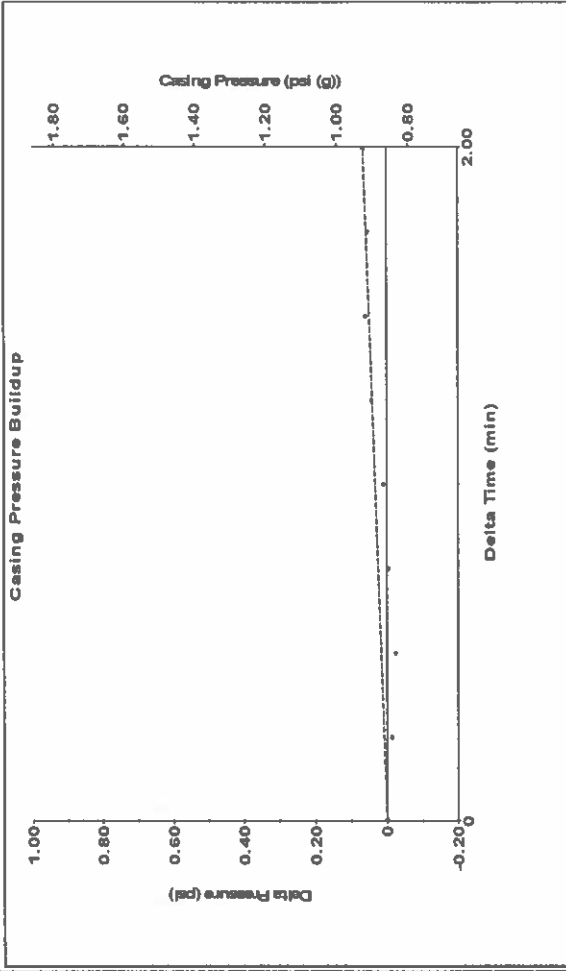
Group: TAD Well: Devore D-1 (acquired on: 05/04/23 10:52:24)



Filter Type High Pass Automatic Collar Count Yes Time 4.012 sec  
 Manual Acoustic Veloc 124.11 ft/s Manual JTS/sec 17.7305 Joints 71.6429 Jts  
 Depth 2271.08 ft



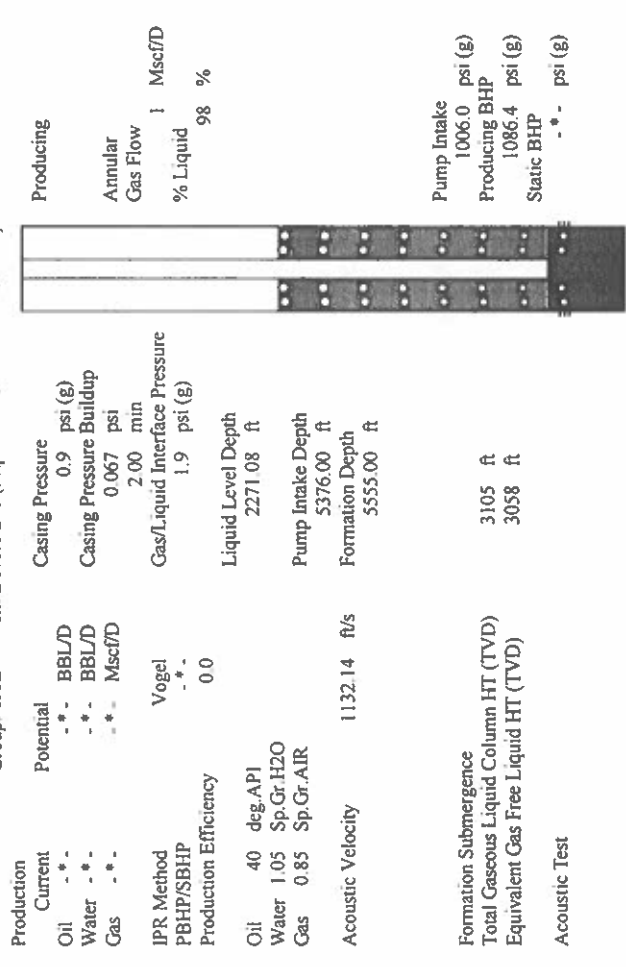
Group: TAD Well: Devore D-1 (acquired on: 05/04/23 10:52:24)



Change in Pressure 0.07 psi PT 14654 Range 0 - ? psi  
 Change in Time 2.00 min

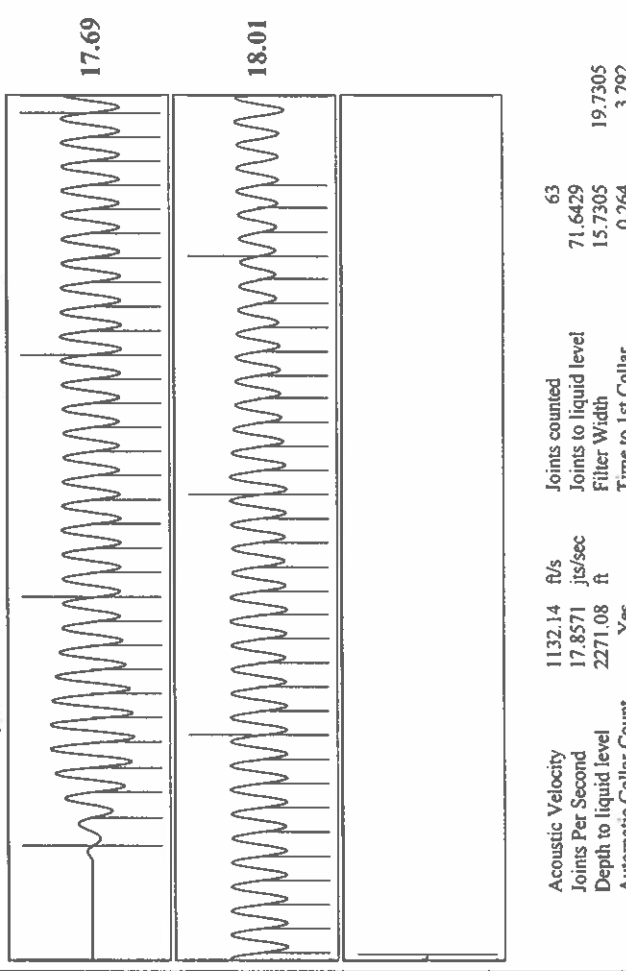
Analysis Method: Automatic

Group: TAD Well: Devore D-1 (acquired on: 05/04/23 10:52:24)



|                                      |                |                               |             |
|--------------------------------------|----------------|-------------------------------|-------------|
| Production                           | Potential      | Casing Pressure               | 0.9 psi (g) |
| Current                              | - * - BBL/D    | Casing Pressure Buildup       | 0.067 psi   |
| Oil                                  | - * - BBL/D    | Gas/Liquid Interface Pressure | 1.9 psi (g) |
| Water                                | - * - Msc/D    | Liquid Level Depth            | 2271.08 ft  |
| Gas                                  | - * - Msc/D    | Pump Intake Depth             | 5376.00 ft  |
| IPR Method                           | Vogel          | Formation Depth               | 5555.00 ft  |
| PBHP/SBHP                            | - * -          |                               |             |
| Production Efficiency                | 0.0            |                               |             |
| Oil                                  | 40 deg API     |                               |             |
| Water                                | 1.05 Sp.Gr.H2O |                               |             |
| Gas                                  | 0.85 Sp.Gr.AIR |                               |             |
| Acoustic Velocity                    | 1132.14 ft/s   |                               |             |
| Formation Submergence                |                |                               |             |
| Total Gaseous Liquid Column HT (TVD) | 3105 ft        |                               |             |
| Equivalent Gas Free Liquid HT (TVD)  | 3058 ft        |                               |             |
| Acoustic Test                        |                |                               |             |

Group: TAD Well: Devore D-1 (acquired on: 05/04/23 10:52:24)



Acoustic Velocity 1132.14 ft/s Joints counted 63  
 Joints Per Second 17.8571 jts/sec Joints to liquid level 71.6429  
 Depth to liquid level 2271.08 ft Filter Width 15.7305  
 Automatic Collar Count Yes Time to 1st Collar 0.264 3.792

May 09, 2023

Katherine McClurkan  
Merit Energy Company, LLC  
13727 Noel Road, Suite 1200  
Dallas, TX 75240

Re: Temporary Abandonment  
API 15-055-22194-00-01  
DeVore D 1  
NW/4 Sec.27-26S-33W  
Finney County, Kansas

Dear Katherine McClurkan:

"Your temporary abandonment (TA) application for the well listed above has been approved. In accordance with K.A.R. 82-3-111 the TA status of this well will expire 01/11/2024.

- \* If you return this well to service or plug it, please notify the District Office.
- \* If you sell this well you are required to file a Transfer of Operator form, T-1.
- \* If the well will remain temporarily abandoned, you must submit a new TA application, CP-111, before 01/11/2024.

You may contact me at the number above if you have questions.

Very truly yours,

Michael Maier"