

KANSAS CORPORATION COMMISSION
OIL & GAS CONSERVATION DIVISION

TEMPORARY ABANDONMENT WELL APPLICATION

OPERATOR: License#
Name:
Address 1:
Address 2:
City: State: Zip:
Contact Person:
Phone:
Contact Person Email:
Field Contact Person:
Field Contact Person Phone:

API No. 15-
Spot Description:
Sec. Twp. S. R.
GPS Location: Lat: Long:
Datum: NAD27 NAD83 WGS84
County: Elevation:
Lease Name: Well #:
Well Type: Oil Gas OG WSW Other:
SWD Permit #: ENHR Permit #:
Gas Storage Permit #:
Spud Date: Date Shut-In:

Table with 7 columns: Conductor, Surface, Production, Intermediate, Liner, Tubing. Rows include Size, Setting Depth, Amount of Cement, Top of Cement, Bottom of Cement.

Casing Fluid Level from Surface: How Determined? Date:
Casing Squeeze(s): to w / sacks of cement, to w / sacks of cement. Date:
Do you have a valid Oil & Gas Lease? Yes No
Depth and Type: Junk in Hole at Tools in Hole at Casing Leaks: Yes No Depth of casing leak(s):
Type Completion: ALT. I ALT. II Depth of: DV Tool: w / sacks of cement Port Collar: w / sack of cement
Packer Type: Size: Inch Set at: Feet
Total Depth: Plug Back Depth: Plug Back Method:

Geological Data:

Table with 4 columns: Formation Name, Formation Top, Formation Base, Completion Information. Rows 1 and 2.

UNDER PENALTY OF PERJURY I HEREBY ATTEST THAT THE INFORMATION CONTAINED HEREIN IS TRUE AND CORRECT TO THE BEST OF MY KNOWLEDGE

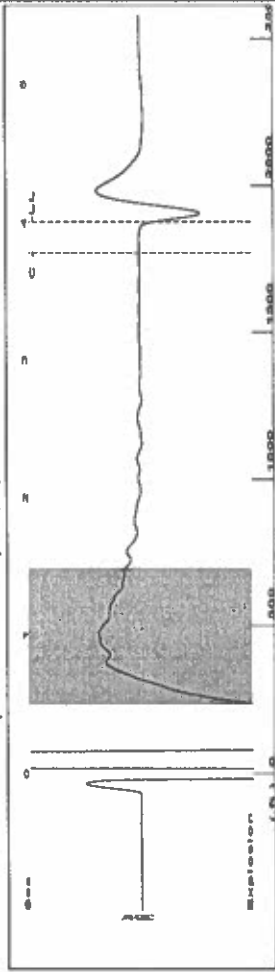
Submitted Electronically

Form with fields: Do NOT Write in This Space - KCC USE ONLY, Date Tested, Results, Date Plugged, Date Repaired, Date Put Back in Service, Review Completed by, Comments, TA Approved: Yes Denied, Date.

Mail to the Appropriate KCC Conservation Office:

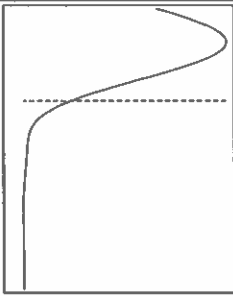
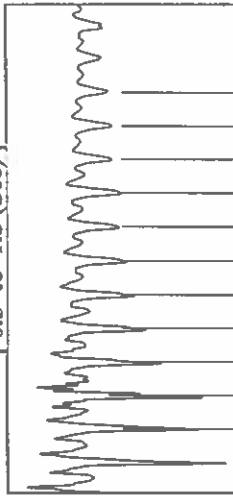
Table with 2 columns: Office Address, Phone. Rows for KCC District Office #1, #2, #3, #4.

Group: TAD Well: Frey I-2 (acquired on: 05/10/23 15:47:51)



Filter Type High Pass Automatic Collar Count Yes
 Manual Acoustic Veloc 0.174 ft/s Manual JTS/sec 14,5138
 Time 4.006 sec
 Joints 59,1795 Jts
 Depth 1875.99 ft

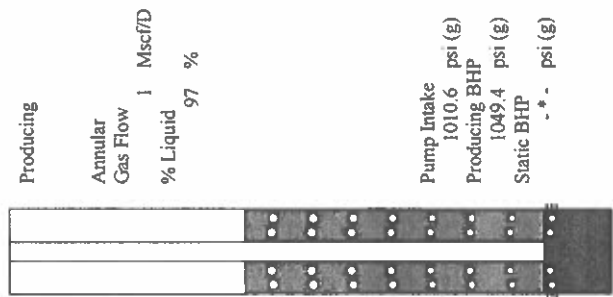
[0.5 to 1.5 (Sec)]



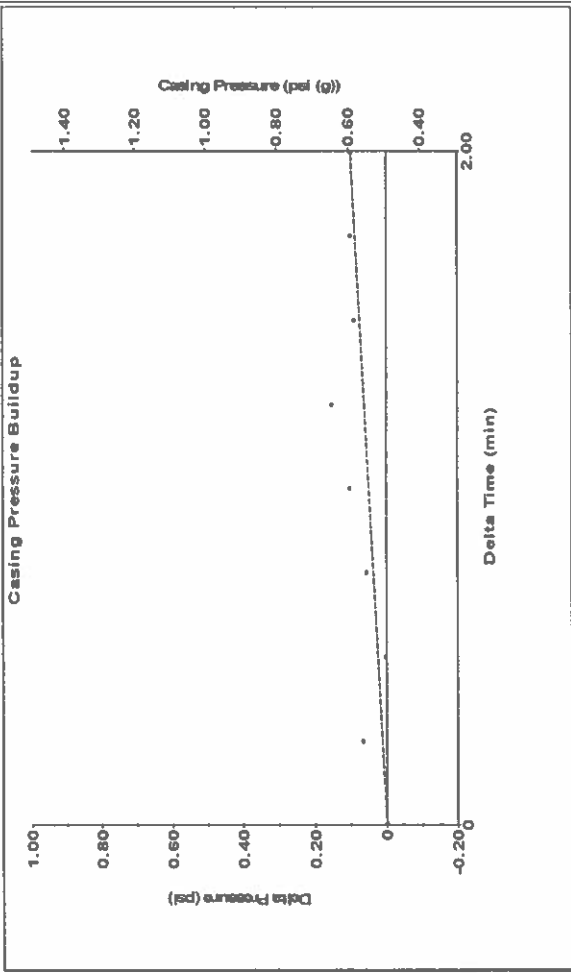
Analysis Method: Automatic

Group: TAD Well: Frey I-2 (acquired on: 05/10/23 15:47:51)

Production	Potential	Casing Pressure	0.5 psi (g)
Current	Oil -*- BBL/D	Casing Pressure Buildup	0.1 psi
Oil -*-	Water -*- BBL/D	Gas/Liquid Interface Pressure	1.5 psi (g)
Water -*-	Gas -*- Mscf/D	Liquid Level Depth	1875.99 ft
Gas -*-		Pump Intake Depth	5059.00 ft
IPR Method	Vogel	Formation Depth	5146.00 ft
PBHP/SBHP	-*-		
Production Efficiency	0.0		
Oil 40 deg API			
Water 1.05 Sp.Gr.H2O			
Gas 1.03 Sp.Gr.AIR			
Acoustic Velocity	936.591 ft/s		
Formation Submergence			
Total Gaseous Liquid Column HT (TVD)	3183 ft		
Equivalent Gas Free Liquid HT (TVD)	3092 ft		
Acoustic Test			

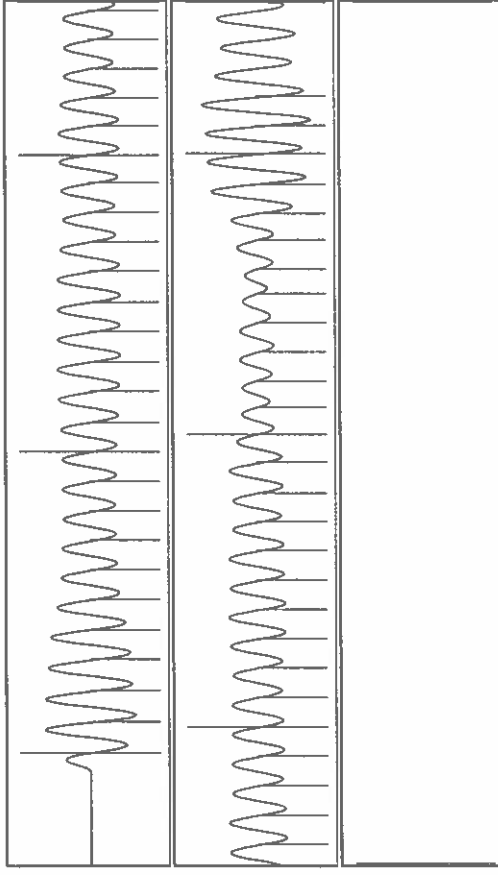


Group: TAD Well: Frey I-2 (acquired on: 05/10/23 15:47:51)



Change in Pressure 0.10 psi PT 14654 Range
 Change in Time 2.00 min

Group: TAD Well: Frey I-2 (acquired on: 05/10/23 15:47:51)



Acoustic Velocity 936.591 ft/s Joints counted 52
 Joints Per Second 14.7727 jts/sec Joints to liquid level 59,1795
 Depth to liquid level 1875.99 ft Filter Width 16,5138
 Automatic Collar Count Yes Time to 1st Collar 0.26 3.78

May 15, 2023

Katherine McClurkan
Merit Energy Company, LLC
13727 Noel Road, Suite 1200
Dallas, TX 75240-7362

Re: Temporary Abandonment
API 15-081-21458-00-01
Frey I 2
SE/4 Sec.18-27S-33W
Haskell County, Kansas

Dear Katherine McClurkan:

"Your temporary abandonment (TA) application for the well listed above has been approved. In accordance with K.A.R. 82-3-111 the TA status of this well will expire 05/15/2024.

- * If you return this well to service or plug it, please notify the District Office.
- * If you sell this well you are required to file a Transfer of Operator form, T-1.
- * If the well will remain temporarily abandoned, you must submit a new TA application, CP-111, before 05/15/2024.

You may contact me at the number above if you have questions.

Very truly yours,

Michael Maier"