

KANSAS CORPORATION COMMISSION
OIL & GAS CONSERVATION DIVISION

TEMPORARY ABANDONMENT WELL APPLICATION

OPERATOR: License#
Name:
Address 1:
Address 2:
City: State: Zip:
Contact Person:
Phone:
Contact Person Email:
Field Contact Person:
Field Contact Person Phone:

API No. 15-
Spot Description:
Sec. Twp. S. R.
GPS Location: Lat, Long
Datum: NAD27, NAD83, WGS84
County: Elevation:
Lease Name: Well #:
Well Type: Oil, Gas, OG, WSW, Other
SWD Permit #: ENHR Permit #:
Gas Storage Permit #:
Spud Date: Date Shut-In:

Table with 7 columns: Conductor, Surface, Production, Intermediate, Liner, Tubing. Rows include Size, Setting Depth, Amount of Cement, Top of Cement, Bottom of Cement.

Casing Fluid Level from Surface: How Determined? Date:
Casing Squeeze(s): to w / sacks of cement, to w / sacks of cement. Date:
Do you have a valid Oil & Gas Lease? Yes No
Depth and Type: Junk in Hole at Tools in Hole at Casing Leaks: Yes No Depth of casing leak(s):
Type Completion: ALT. I ALT. II Depth of: DV Tool: w / sacks of cement Port Collar: w / sack of cement
Packer Type: Size: Inch Set at: Feet
Total Depth: Plug Back Depth: Plug Back Method:

Geological Date:

Table with 4 columns: Formation Name, Formation Top, Formation Base, Completion Information. Rows 1 and 2.

UNDER PENALTY OF PERJURY I HEREBY ATTEST THAT THE INFORMATION CONTAINED HEREIN IS TRUE AND CORRECT TO THE BEST OF MY KNOWLEDGE

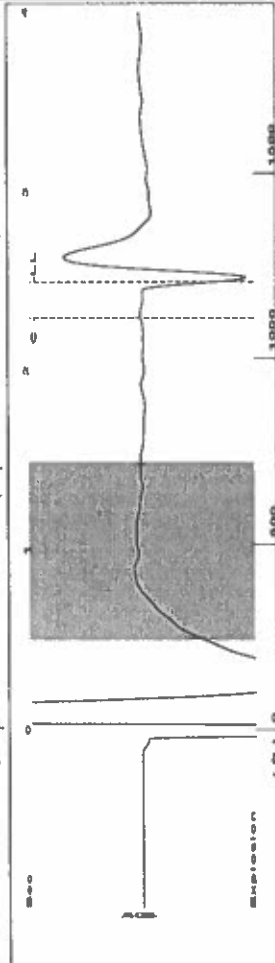
Submitted Electronically

Form with fields: Do NOT Write in This Space - KCC USE ONLY, Date Tested, Results, Date Plugged, Date Repaired, Date Put Back in Service, Review Completed by, Comments, TA Approved: Yes Denied, Date.

Mail to the Appropriate KCC Conservation Office:

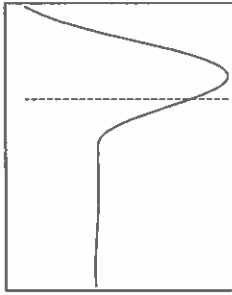
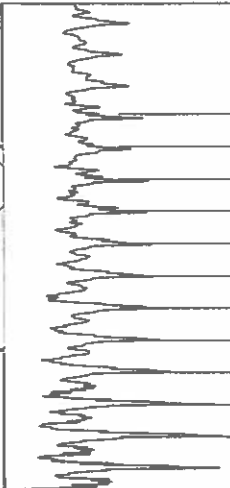
Table with 3 columns: District Office #, Address, Phone. Rows 1-4.

Group: TAD Well: FMuU 401 (acquired on: 05/10/23 15:06:45)



Filter Type High Pass Automatic Collar Count Yes  
 Manual Acoustic Veloc 957.704 ft/s Manual JTS/sec 15.1057  
 Time 2.493 sec  
 Joints 38.033 Jts  
 Depth 1205.65 ft

[ 0.5 to 1.5 (Sec) ]

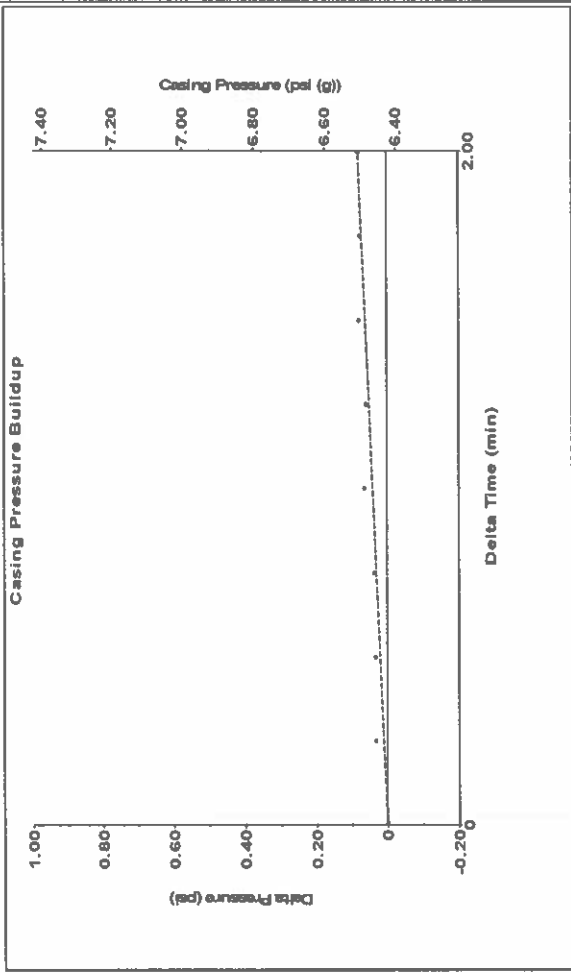


**Analysis Method: Automatic**

Group: TAD Well: FMuU 401 (acquired on: 05/10/23 15:06:45)

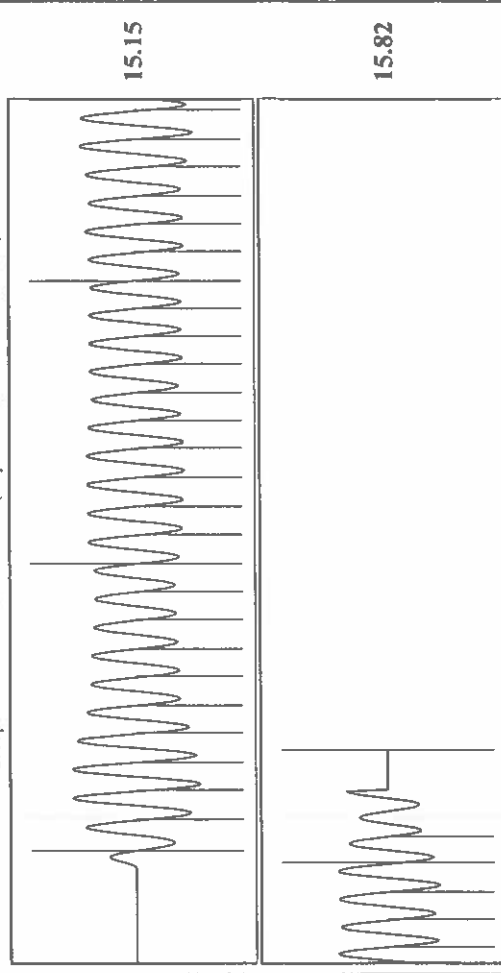
Production	Potential	Casing Pressure	6.4 psi (g)
Oil	-*- BBL/D	Casing Pressure Buildup	0.1 psi
Water	-*- BBL/D	Gas/Liquid Interface Pressure	7.3 psi (g)
Gas	-*- Mscf/D	Liquid Level Depth	1205.65 ft
IPR Method	Vogel	Pump Intake Depth	5233.00 ft
PBHP/SBHP	-*-	Formation Depth	5171.00 ft
Production Efficiency	0.0	Acoustic Velocity	967.224 ft/s
Oil 40 deg API		Formation Submergence	
Water 1.05 Sp.Gr.H2O		Total Gaseous Liquid Column HT (TVD)	4027 ft
Gas 0.99 Sp.Gr.AIR		Equivalent Gas Free Liquid HT (TVD)	4027 ft
		Acoustic Test	
		Producing	
		Annular Gas Flow	0 Mscf/D
		% Liquid	100 %
		Pump Intake	1297.4 psi (g)
		Producing BHP	1279.3 psi (g)
		Static BHP	-*- psi (g)

Group: TAD Well: FMuU 401 (acquired on: 05/10/23 15:06:45)



Change in Pressure 0.08 psi PT 14654 Range  
 Change in Time 2.00 min

Group: TAD Well: FMuU 401 (acquired on: 05/10/23 15:06:45)



Acoustic Velocity 967.224 ft/s Joints counted 31  
 Joints Per Second 15.2559 Jts/sec Joints to liquid level 38.033  
 Depth to liquid level 1205.65 ft Filter Width 13.1057  
 Automatic Collar Count Yes Time to 1st Collar 2.292

May 15, 2023

Katherine McClurkan  
Merit Energy Company, LLC  
13727 Noel Road, Suite 1200  
DALLAS, TX 75240

Re: Temporary Abandonment  
API 15-081-21323-00-00  
FMU 401  
SE/4 Sec.25-27S-34W  
Haskell County, Kansas

Dear Katherine McClurkan:

"Your temporary abandonment (TA) application for the well listed above has been approved. In accordance with K.A.R. 82-3-111 the TA status of this well will expire 05/15/2024.

- \* If you return this well to service or plug it, please notify the District Office.
- \* If you sell this well you are required to file a Transfer of Operator form, T-1.
- \* If the well will remain temporarily abandoned, you must submit a new TA application, CP-111, before 05/15/2024.

You may contact me at the number above if you have questions.

Very truly yours,

Michael Maier"