

KANSAS CORPORATION COMMISSION
OIL & GAS CONSERVATION DIVISION

TEMPORARY ABANDONMENT WELL APPLICATION

OPERATOR: License#
Name:
Address 1:
Address 2:
City: State: Zip:
Contact Person:
Phone:
Contact Person Email:
Field Contact Person:
Field Contact Person Phone:

API No. 15-
Spot Description:
Sec. Twp. S. R.
GPS Location: Lat: Long:
Datum: NAD27 NAD83 WGS84
County: Elevation:
Lease Name: Well #:
Well Type: Oil Gas OG WSW Other:
SWD Permit #: ENHR Permit #:
Gas Storage Permit #:
Spud Date: Date Shut-In:

Table with 7 columns: Conductor, Surface, Production, Intermediate, Liner, Tubing. Rows include Size, Setting Depth, Amount of Cement, Top of Cement, Bottom of Cement.

Casing Fluid Level from Surface: How Determined? Date:
Casing Squeeze(s): to w / sacks of cement, to w / sacks of cement. Date:
Do you have a valid Oil & Gas Lease? Yes No
Depth and Type: Junk in Hole at Tools in Hole at Casing Leaks: Yes No Depth of casing leak(s):
Type Completion: ALT. I ALT. II Depth of: DV Tool: w / sacks of cement Port Collar: w / sack of cement
Packer Type: Size: Inch Set at: Feet
Total Depth: Plug Back Depth: Plug Back Method:

Geological Data:

Table with 4 columns: Formation Name, Formation Top, Formation Base, Completion Information. Rows 1 and 2.

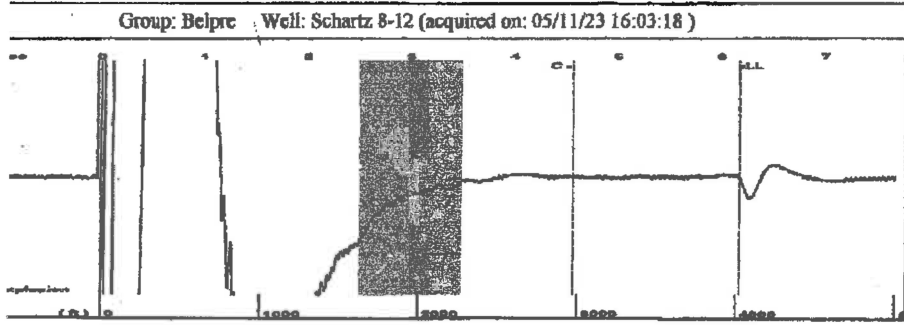
UNDER PENALTY OF PERJURY I HEREBY ATTEST THAT THE INFORMATION CONTAINED HEREIN IS TRUE AND CORRECT TO THE BEST OF MY KNOWLEDGE

Submitted Electronically

Do NOT Write in This Space - KCC USE ONLY
Date Tested: Results: Date Plugged: Date Repaired: Date Put Back in Service:
Review Completed by: Comments:
TA Approved: Yes Denied Date:

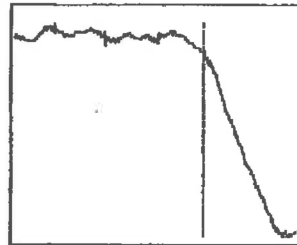
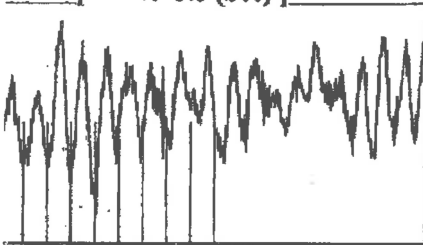
Mail to the Appropriate KCC Conservation Office:

Table with 2 columns: Office Address, Phone. Rows for District Office #1, #2, #3, #4.

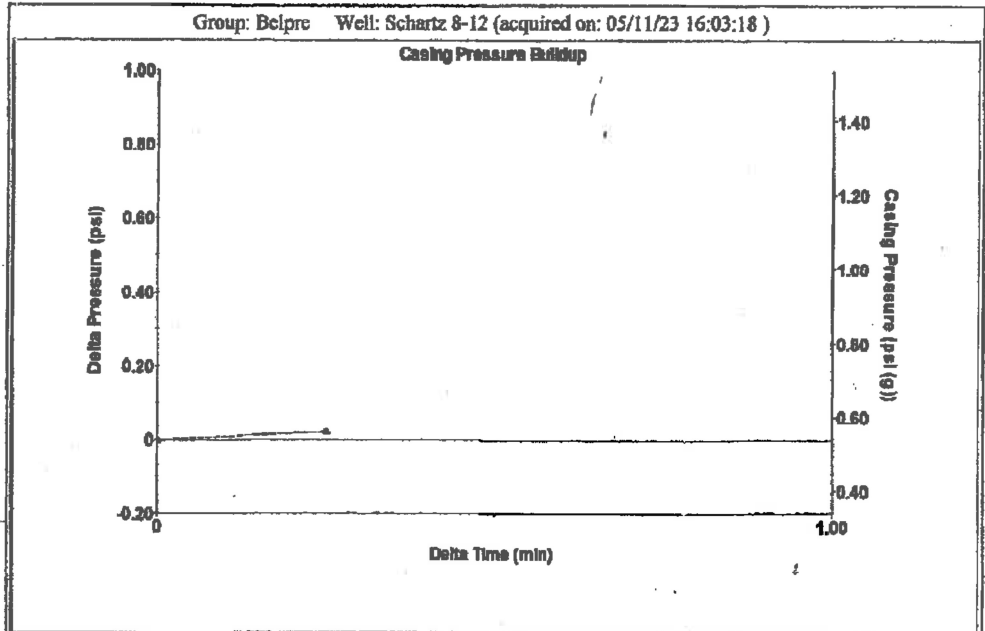


type High Pass Automatic Collar Count Yes Time 6.17 sec
 Acoustic Vel 1264.62 ft/s Manual JTS/sec 20.4499 Joints 130.108 Jts
 Depth 4022.93 ft

[2.5 to 3.5 (Sec)]



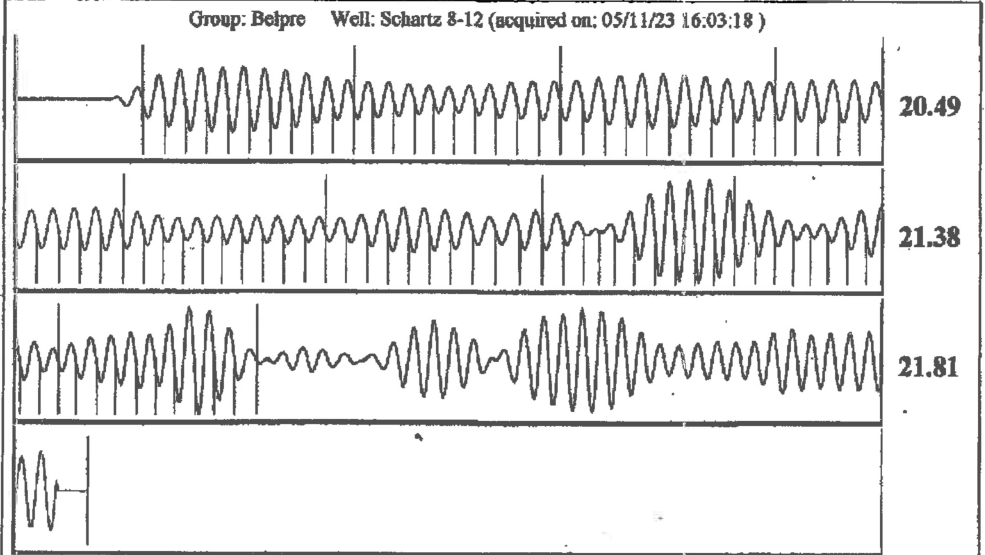
Analysis Method: Automatic



Change in Pressure 0.02 psi PT13440
 Change in Time 0.25 min Range 0 - 7 psi

Group: Belpre Well: Schartz 8-12 (acquired on: 05/11/23 16:03:18)

cation current - * - - * - - * - ethod /SBHP ction Efficiency 40 deg API 1.05 Sp.Gr.H2O 0.70 Sp.Gr.AIR istic Velocity 1304.03 ft/s ction Submergence Gaseous Liquid Column HT (TVD) 338 ft alent Gas Free Liquid HT (TVD) 304 ft istic Test	Potential - * - BBL/D - * - BBL/D - * - Mscf/D Vogel - * - 0.0 Liquid Level Depth 4022.93 ft Pump Intake Depth 4361.00 ft Formation Depth 4293.00 ft	Casing Pressure 0.5 psi (g) Casing Pressure Buildup 0.0 psi 0.25 min Gas/Liquid Interface Pressure 2.0 psi (g) Producing Annular Gas Flow 2 Mscf/D % Liquid 87 % Pump Intake 104.8 psi (g) Producing BHP 81.9 psi (g) Static BHP - * - psi (g)
--	--	--



Acoustic Velocity 1304.03 ft/s Joints counted 90
 Joints Per Second 21.0872 jts/sec Joints to liquid level 130.108
 Depth to liquid level 4022.93 ft Filter Width 18.4499 22.4499
 Automatic Collar Count Yes Time to 1st Collar 0.292 4.56

May 17, 2023

Loveness Mpanje
F. G. Holl Company L.L.C.
9431 E CENTRAL STE 100
WICHITA, KS 67206-2563

Re: Temporary Abandonment
API 15-047-21310-00-00
SCHARTZ 8-12
SE/4 Sec.12-24S-17W
Edwards County, Kansas

Dear Loveness Mpanje:

"Your temporary abandonment (TA) application for the well listed above has been approved. In accordance with K.A.R. 82-3-111 the TA status of this well will expire 05/17/2024.

- * If you return this well to service or plug it, please notify the District Office.
- * If you sell this well you are required to file a Transfer of Operator form, T-1.
- * If the well will remain temporarily abandoned, you must submit a new TA application, CP-111, before 05/17/2024.

You may contact me at the number above if you have questions.

Very truly yours,

Michael Maier"