

KANSAS CORPORATION COMMISSION
OIL & GAS CONSERVATION DIVISION

TEMPORARY ABANDONMENT WELL APPLICATION

OPERATOR: License# \_\_\_\_\_
Name: \_\_\_\_\_
Address 1: \_\_\_\_\_
Address 2: \_\_\_\_\_
City: \_\_\_\_\_ State: \_\_\_\_\_ Zip: \_\_\_\_\_ + \_\_\_\_\_
Contact Person: \_\_\_\_\_
Phone:( \_\_\_\_\_ ) \_\_\_\_\_
Contact Person Email: \_\_\_\_\_
Field Contact Person: \_\_\_\_\_
Field Contact Person Phone: ( \_\_\_\_\_ ) \_\_\_\_\_

API No. 15- \_\_\_\_\_
Spot Description: \_\_\_\_\_
- - - - - Sec. \_\_\_\_\_ Twp. \_\_\_\_\_ S. R. \_\_\_\_\_  E  W
\_\_\_\_\_ feet from  N /  S Line of Section
\_\_\_\_\_ feet from  E /  W Line of Section
GPS Location: Lat: \_\_\_\_\_, Long: \_\_\_\_\_
Datum:  NAD27  NAD83  WGS84
County: \_\_\_\_\_ Elevation: \_\_\_\_\_  GL  KB
Lease Name: \_\_\_\_\_ Well #: \_\_\_\_\_
Well Type: (check one)  Oil  Gas  OG  WSW  Other: \_\_\_\_\_
 SWD Permit #: \_\_\_\_\_  ENHR Permit #: \_\_\_\_\_
 Gas Storage Permit #: \_\_\_\_\_
Spud Date: \_\_\_\_\_ Date Shut-In: \_\_\_\_\_

Table with 7 columns: Conductor, Surface, Production, Intermediate, Liner, Tubing. Rows include Size, Setting Depth, Amount of Cement, Top of Cement, Bottom of Cement.

Casing Fluid Level from Surface: \_\_\_\_\_ How Determined? \_\_\_\_\_ Date: \_\_\_\_\_
Casing Squeeze(s): \_\_\_\_\_ to \_\_\_\_\_ w / \_\_\_\_\_ sacks of cement, \_\_\_\_\_ to \_\_\_\_\_ w / \_\_\_\_\_ sacks of cement. Date: \_\_\_\_\_
Do you have a valid Oil & Gas Lease?  Yes  No
Depth and Type:  Junk in Hole at \_\_\_\_\_ (depth)  Tools in Hole at \_\_\_\_\_ (depth) Casing Leaks:  Yes  No Depth of casing leak(s): \_\_\_\_\_
Type Completion:  ALT. I  ALT. II Depth of:  DV Tool: \_\_\_\_\_ w / \_\_\_\_\_ sacks of cement  Port Collar: \_\_\_\_\_ w / \_\_\_\_\_ sack of cement
Packer Type: \_\_\_\_\_ Size: \_\_\_\_\_ Inch Set at: \_\_\_\_\_ Feet
Total Depth: \_\_\_\_\_ Plug Back Depth: \_\_\_\_\_ Plug Back Method: \_\_\_\_\_

Geological Date:

Table with 2 columns: Formation Name, Completion Information. Rows 1 and 2 for formation details.

UNDER PENALTY OF PERJURY I HEREBY ATTEST THAT THE INFORMATION CONTAINED HEREIN IS TRUE AND CORRECT TO THE BEST OF MY KNOWLEDGE

Submitted Electronically

Do NOT Write in This Space - KCC USE ONLY
Date Tested: \_\_\_\_\_ Results: \_\_\_\_\_ Date Plugged: \_\_\_\_\_ Date Repaired: \_\_\_\_\_ Date Put Back in Service: \_\_\_\_\_
Review Completed by: \_\_\_\_\_ Comments: \_\_\_\_\_
TA Approved:  Yes  Denied Date: \_\_\_\_\_

Mail to the Appropriate KCC Conservation Office:

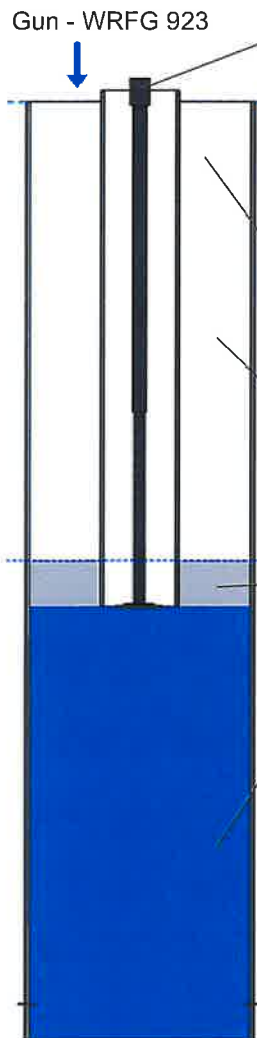
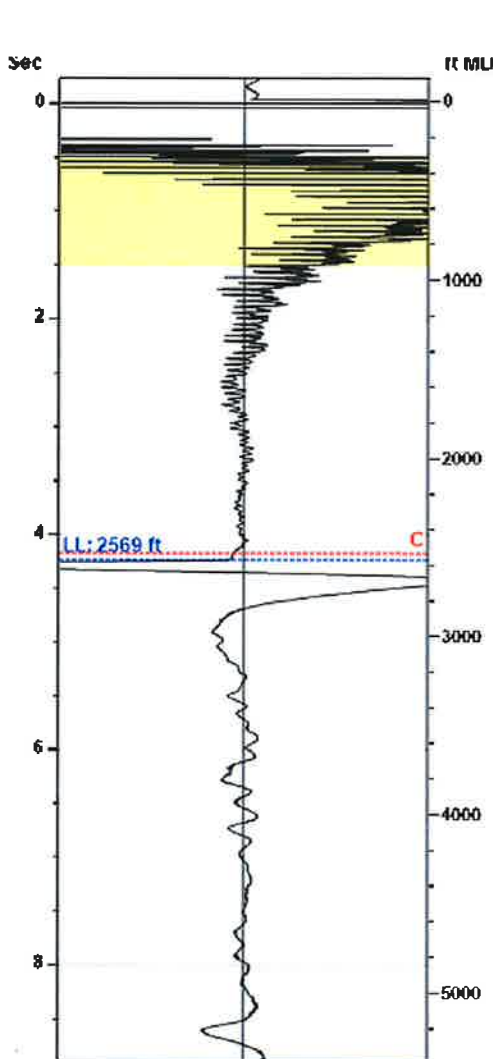
Table with 2 columns: Office Address, Phone. Rows for KCC District Office #1, #2, #3, and #4.

Liquid Level

2569 ft MD

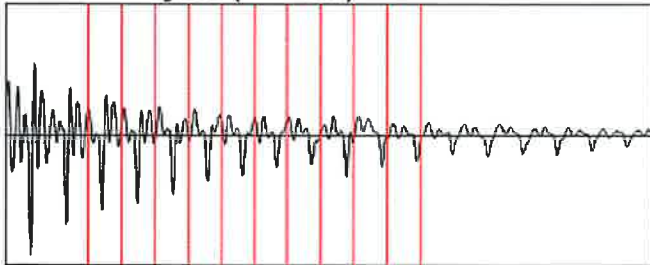
Fluid Above Pump  
Equivalent Gas Free Above Pump

257 ft TVD  
254 ft TVD



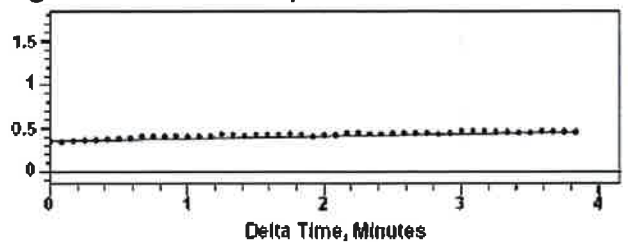
Production			
Date Entered	04/07/23		
	Current	Potential	
Oil	**	**	BBL/D
Water	**	**	BBL/D
Gas	**	**	Mscf/D
IPR Method	Vogel		
PBHP/SBHP	-0.00		
Producing Efficiency	0.00%		
Casing Pressure			
Pressure	0.4 psi (g)		
Annular Gas Flow			
Gas Flow	0.6 Mscf/D		
Fluid Properties			
% Liquid Above Pump	98.89%		
% Liquid Below Pump	99.26%		
Depths			
Pump Intake Depth	2826 ft		
Formation Depth	5072 ft		
Wellbore Pressures			
PIP	89.2 psi (g)		
PBHP	1102.9 psi (g)		
SBHP	**		
Gas/Liq Interface	1.4 psi (g)		

Collar Analysis (Manual)



Average Acoustic Velocity 1209 ft/s  
Average Joints Per Sec. 18.60 Jts/sec  
Joints To Liquid 78.73 Jts

Casing Pressure Buildup



Casing Pressure 0.4 psi (g)  
Buildup 0.1 psi (g)  
Buildup Time 3 min 50 sec  
Gas Gravity from Collar Analysis (Manual) 0.7776 Air = 1

Comments and Recommendations

barrel test well at 170 bbls of total fluid at rainbowl oil (not even enough to covered 1/4 of buckett with oil)

Echometer Company  
5001 Ditto Lane  
Wichita Falls, TX 76302  
(940) 767-4334  
info@echometer.com

May 17, 2023

M.L. Korphage  
Vincent Oil Corporation  
200 W DOUGLAS AVE #725  
WICHITA, KS 67202-3023

Re: Temporary Abandonment  
API 15-057-20601-00-00  
SCHOONOVER 2-3  
NE/4 Sec.03-28S-23W  
Ford County, Kansas

Dear M.L. Korphage:

"Your temporary abandonment (TA) application for the well listed above has been approved. In accordance with K.A.R. 82-3-111 the TA status of this well will expire 05/17/2024.

- \* If you return this well to service or plug it, please notify the District Office.
- \* If you sell this well you are required to file a Transfer of Operator form, T-1.
- \* If the well will remain temporarily abandoned, you must submit a new TA application, CP-111, before 05/17/2024.

You may contact me at the number above if you have questions.

Very truly yours,

Michael Maier"