

KANSAS CORPORATION COMMISSION
OIL & GAS CONSERVATION DIVISION

TEMPORARY ABANDONMENT WELL APPLICATION

OPERATOR: License#
Name:
Address 1:
Address 2:
City: State: Zip:
Contact Person:
Phone:
Contact Person Email:
Field Contact Person:
Field Contact Person Phone:

API No. 15-
Spot Description:
Sec. Twp. S. R.
GPS Location: Lat: Long:
Datum: NAD27 NAD83 WGS84
County: Elevation:
Lease Name: Well #:
Well Type: Oil Gas OG WSW Other:
SWD Permit #: ENHR Permit #:
Gas Storage Permit #:
Spud Date: Date Shut-In:

Table with 7 columns: Conductor, Surface, Production, Intermediate, Liner, Tubing. Rows include Size, Setting Depth, Amount of Cement, Top of Cement, Bottom of Cement.

Casing Fluid Level from Surface: How Determined? Date:
Casing Squeeze(s): to w / sacks of cement, to w / sacks of cement. Date:
Do you have a valid Oil & Gas Lease? Yes No
Depth and Type: Junk in Hole at Tools in Hole at Casing Leaks: Yes No Depth of casing leak(s):
Type Completion: ALT. I ALT. II Depth of: DV Tool: w / sacks of cement Port Collar: w / sack of cement
Packer Type: Size: Inch Set at: Feet
Total Depth: Plug Back Depth: Plug Back Method:

Geological Data:

Table with 4 columns: Formation Name, Formation Top, Formation Base, Completion Information. Rows 1 and 2.

UNDER PENALTY OF PERJURY I HEREBY ATTEST THAT THE INFORMATION CONTAINED HEREIN IS TRUE AND CORRECT TO THE BEST OF MY KNOWLEDGE

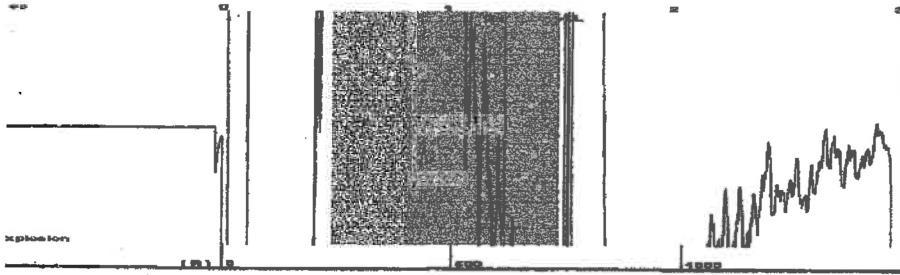
Submitted Electronically

Do NOT Write in This Space - KCC USE ONLY
Date Tested: Results: Date Plugged: Date Repaired: Date Put Back in Service:
Review Completed by: Comments:
TA Approved: Yes Denied Date:

Mail to the Appropriate KCC Conservation Office:

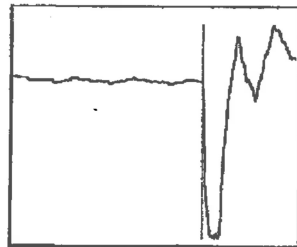
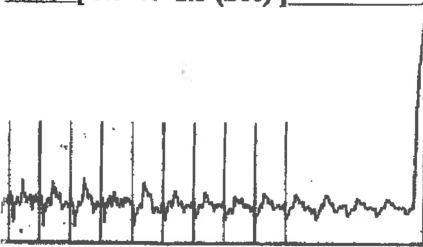
Table with 2 columns: Office Address, Phone. Rows for District Office #1, #2, #3, #4.

Group: Radium Well: GBF #1-12 (acquired on: 05/14/23 18:55:46)



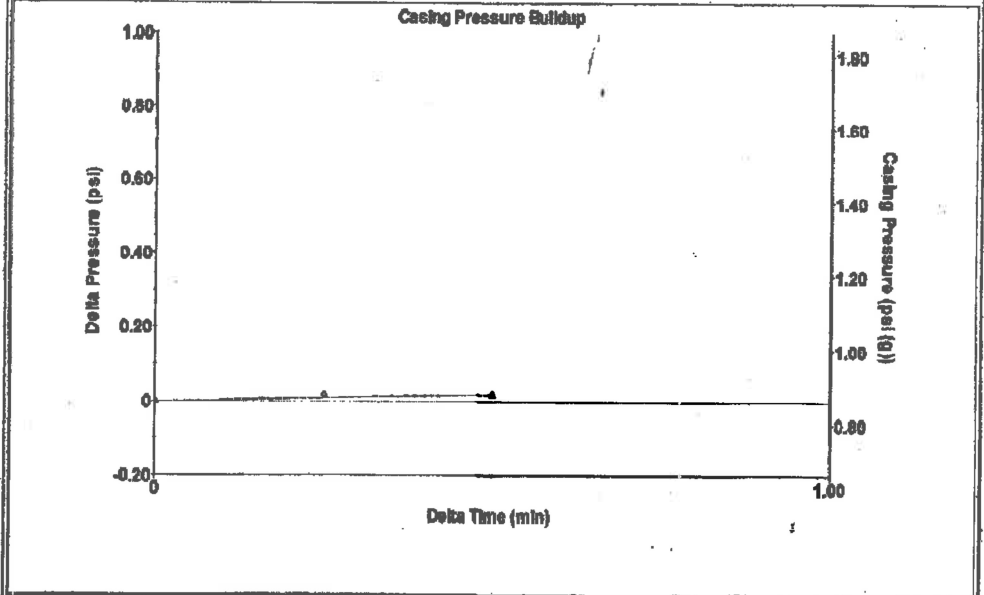
Type High Pass Automatic Collar Count Yes Time 1.488 sec  
 Acoustic Velocity 990.127 ft/s Manual JTS/sec 15.9236 Joints 23.4454 Jts  
 Depth 728.92 ft

[ 0.5 to 1.5 (Sec) ]



Analysis Method: Automatic

Group: Radium Well: GBF #1-12 (acquired on: 05/14/23 18:55:46)



Change in Pressure 0.02 psi PT13440  
 Change in Time 0.50 min Range 0-7 psi

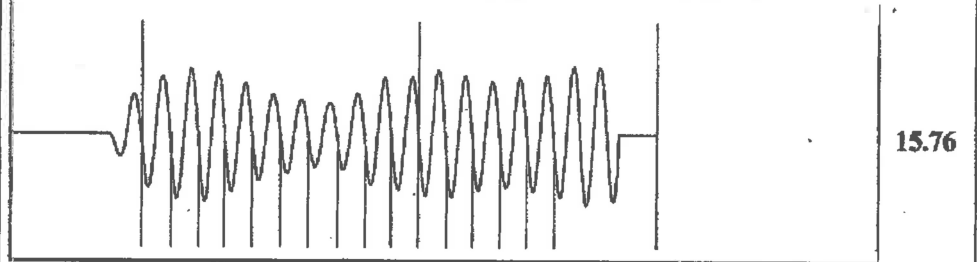
Group: Radium Well: GBF #1-12 (acquired on: 05/14/23 18:55:46)

Current Potential	Casing Pressure	Producing
- * - BBL/D	0.9 psi (g)	Annular Gas Flow
- * - BBL/D	Casing Pressure Buildup	0 Mscf/D
- * - Mscf/D	0.0 psi	% Liquid
	0.50 min	100 %
Method Vogel	Gas/Liquid Interface Pressure	
1/3 BHP	1.3 psi (g)	
Production Efficiency	Liquid Level Depth	
0.0	728.92 ft	
40 deg API	Pump Intake Depth	
1.05 Sp.Gr.H2O	3431.00 ft	
0.98 Sp.Gr.AIR	Formation Depth	
Acoustic Velocity 979.727 ft/s	3377.00 ft	



Pump Intake 892.9 psi (g)  
 Producing BHP 876.2 psi (g)  
 Static BHP - \* - psi (g)

Group: Radium Well: GBF #1-12 (acquired on: 05/14/23 18:55:46)



Acoustic Velocity	979.727 ft/s	Joints counted	15
Joints Per Second	15.7563 jts/sec	Joints to liquid level	23.4454
Depth to liquid level	728.917 ft	Filter Width	13.9236
Automatic Collar Count	Yes	Time to 1st Collar	0.3

Conservation Division  
District Office No. 4  
2301 E. 13th Street  
Hays, KS 67601-2651



Phone: 785-261-6250  
<http://kcc.ks.gov/>

Susan K. Duffy, Chair  
Dwight D. Keen, Commissioner  
Andrew J. French, Commissioner

Laura Kelly, Governor

May 22, 2023

Loveness Mpanje  
F. G. Holl Company L.L.C.  
9431 E CENTRAL STE 100  
WICHITA, KS 67206-2563

Re: Temporary Abandonment  
API 15-009-26096-00-01  
G.B.F. 1-12  
NW/4 Sec.12-19S-14W  
Barton County, Kansas

Dear Loveness Mpanje:

"Your temporary abandonment (TA) application for the well listed above has been approved. In accordance with K.A.R. 82-3-111 the TA status of this well will expire 05/22/2024.

- \* If you return this well to service or plug it, please notify the District Office.
- \* If you sell this well you are required to file a Transfer of Operator form, T-1.
- \* If the well will remain temporarily abandoned, you must submit a new TA application, CP-111, before 05/22/2024.

You may contact me at the number above if you have questions.

Very truly yours,

RICHARD WILLIAMS"