

KANSAS CORPORATION COMMISSION
OIL & GAS CONSERVATION DIVISION

TEMPORARY ABANDONMENT WELL APPLICATION

OPERATOR: License# \_\_\_\_\_
Name: \_\_\_\_\_
Address 1: \_\_\_\_\_
Address 2: \_\_\_\_\_
City: \_\_\_\_\_ State: \_\_\_\_\_ Zip: \_\_\_\_\_ + \_\_\_\_\_
Contact Person: \_\_\_\_\_
Phone:( \_\_\_\_\_ ) \_\_\_\_\_
Contact Person Email: \_\_\_\_\_
Field Contact Person: \_\_\_\_\_
Field Contact Person Phone: ( \_\_\_\_\_ ) \_\_\_\_\_

API No. 15- \_\_\_\_\_
Spot Description: \_\_\_\_\_
- - - - - Sec. \_\_\_\_\_ Twp. \_\_\_\_\_ S. R. \_\_\_\_\_  E  W
\_\_\_\_\_ feet from  N /  S Line of Section
\_\_\_\_\_ feet from  E /  W Line of Section
GPS Location: Lat: \_\_\_\_\_, Long: \_\_\_\_\_
Datum:  NAD27  NAD83  WGS84
County: \_\_\_\_\_ Elevation: \_\_\_\_\_  GL  KB
Lease Name: \_\_\_\_\_ Well #: \_\_\_\_\_
Well Type: (check one)  Oil  Gas  OG  WSW  Other: \_\_\_\_\_
 SWD Permit #: \_\_\_\_\_  ENHR Permit #: \_\_\_\_\_
 Gas Storage Permit #: \_\_\_\_\_
Spud Date: \_\_\_\_\_ Date Shut-In: \_\_\_\_\_

Table with 7 columns: Conductor, Surface, Production, Intermediate, Liner, Tubing. Rows include Size, Setting Depth, Amount of Cement, Top of Cement, Bottom of Cement.

Casing Fluid Level from Surface: \_\_\_\_\_ How Determined? \_\_\_\_\_ Date: \_\_\_\_\_
Casing Squeeze(s): \_\_\_\_\_ to \_\_\_\_\_ w / \_\_\_\_\_ sacks of cement, \_\_\_\_\_ to \_\_\_\_\_ w / \_\_\_\_\_ sacks of cement. Date: \_\_\_\_\_
Do you have a valid Oil & Gas Lease?  Yes  No
Depth and Type:  Junk in Hole at \_\_\_\_\_ (depth)  Tools in Hole at \_\_\_\_\_ (depth) Casing Leaks:  Yes  No Depth of casing leak(s): \_\_\_\_\_
Type Completion:  ALT. I  ALT. II Depth of:  DV Tool: \_\_\_\_\_ w / \_\_\_\_\_ sacks of cement  Port Collar: \_\_\_\_\_ w / \_\_\_\_\_ sack of cement
Packer Type: \_\_\_\_\_ Size: \_\_\_\_\_ Inch Set at: \_\_\_\_\_ Feet
Total Depth: \_\_\_\_\_ Plug Back Depth: \_\_\_\_\_ Plug Back Method: \_\_\_\_\_

Geological Date:

Table with 4 columns: Formation Name, Formation Top, Formation Base, Completion Information. Rows 1 and 2.

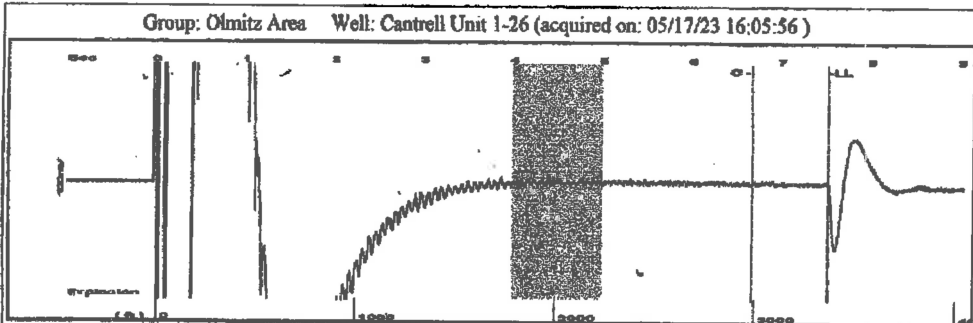
UNDER PENALTY OF PERJURY I HEREBY ATTEST THAT THE INFORMATION CONTAINED HEREIN IS TRUE AND CORRECT TO THE BEST OF MY KNOWLEDGE

Submitted Electronically

Do NOT Write in This Space - KCC USE ONLY
Date Tested: \_\_\_\_\_ Results: \_\_\_\_\_ Date Plugged: \_\_\_\_\_ Date Repaired: \_\_\_\_\_ Date Put Back in Service: \_\_\_\_\_
Review Completed by: \_\_\_\_\_ Comments: \_\_\_\_\_
TA Approved:  Yes  Denied Date: \_\_\_\_\_

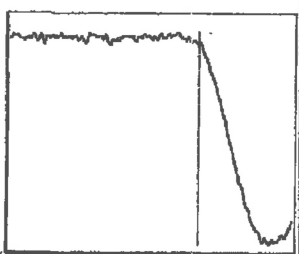
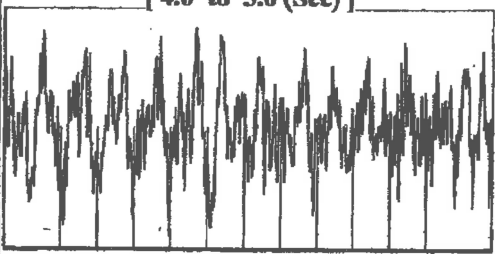
Mail to the Appropriate KCC Conservation Office:

Table with 3 columns: District Office, Address, Phone. Rows for District Office #1, #2, #3, #4.

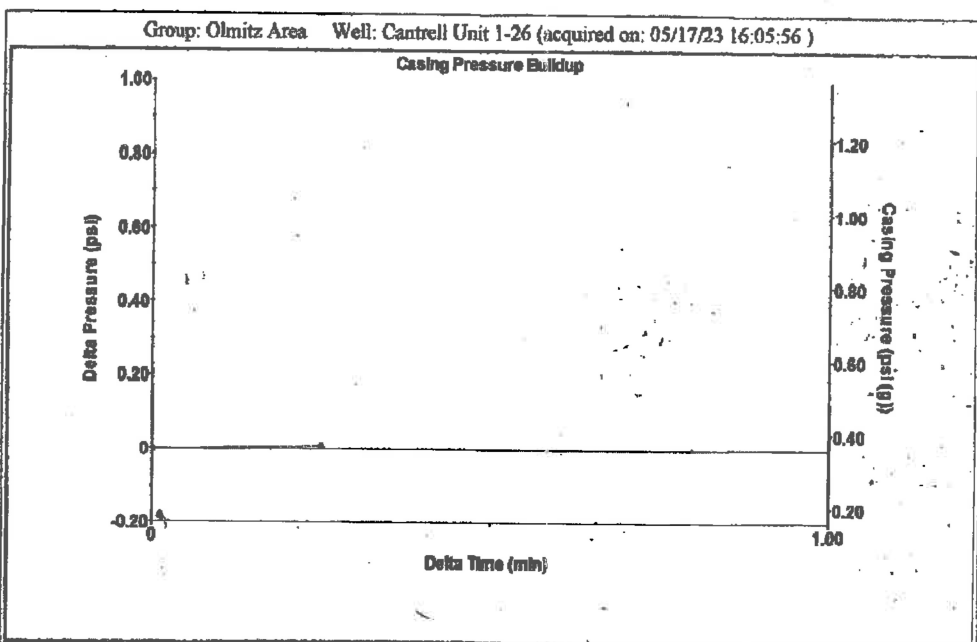


Group: Olmitz Area Well: Cantrell Unit 1-26 (acquired on: 05/17/23 16:05:56)

Filter Type	High Pass	Automatic Collar Count	Yes	Time	7.512 sec
Manual Acoustic Velo	874.035 ft/s	Manual JTS/sec	13.3156	Joints	102.565 Jts
				Depth	3366.18 ft



Analysis Method: Automatic

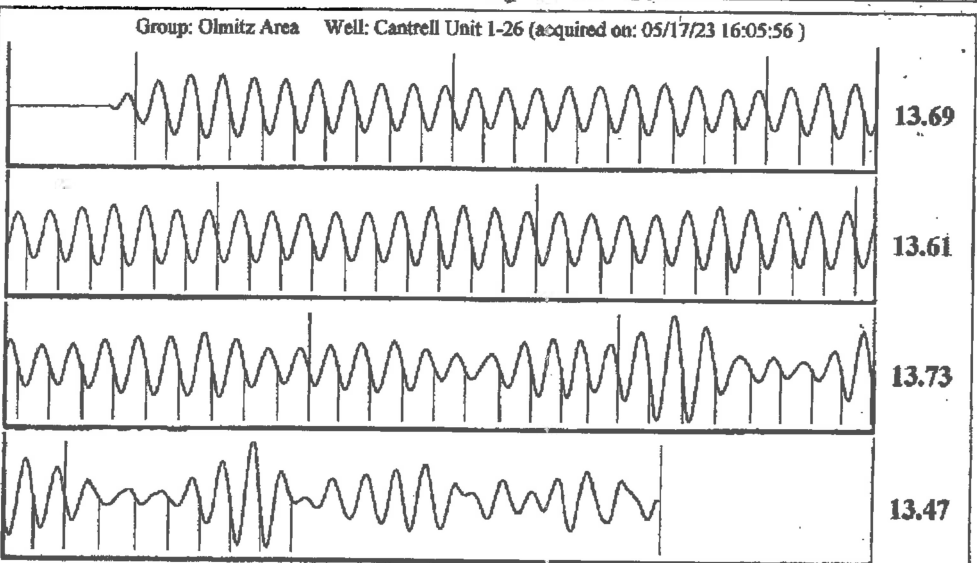


Change in Pressure	0.01 psi	PT13440	
Change in Time	0.25 min	Range	-0 - ? psi

Group: Olmitz Area Well: Cantrell Unit 1-26 (acquired on: 05/17/23 16:05:56)

<b>Production</b>		<b>Casing Pressure</b>	0.4 psi (g)	<b>Producing</b>
Current	Potential	Casing Pressure Buildup	0.006 psi	Annular Gas Flow
Oil -*-	-*- BBL/D	0.25 min		1 Mscf/D
Water -*-	-*- BBL/D	Gas/Liquid Interface Pressure	2.3 psi (g)	% Liquid
Gas -*-	-*! Mscf/D	Liquid Level Depth	3366.18 ft	98 %
IPR Method	Vogel	Pump Intake Depth	3512.00 ft	
PBHP/SBHP	-*-	Formation Depth	3485.00 ft	
Production Efficiency	0.0			
Oil 40 deg.API				
Water 1.05 Sp.Gr.H2O				
Gas 1.08 Sp.Gr.AIR				
Acoustic Velocity	896.215 ft/s			
Formation Submergence				
Total Gaseous Liquid Column HT (TVD)	146 ft			
Equivalent Gas Free Liquid HT (TVD)	144 ft			
Acoustic Test				

Pump Intake	51.8 psi (g)
Producing BHP	42.5 psi (g)
Static BHP	-*- psi (g)



Acoustic Velocity	896.215 ft/s	Joints counted	87
Joints Per Second	13.6535 jts/sec	Joints to liquid level	102.565
Depth to liquid level	3366.18 ft	Filter Width	11.3156 15.3156
Automatic Collar Count	Yes	Time to 1st Collar	0.292 6.664

May 22, 2023

Loveness Mpanje  
F. G. Holl Company L.L.C.  
9431 E CENTRAL STE 100  
WICHITA, KS 67206-2563

Re: Temporary Abandonment  
API 15-009-25747-00-00  
CANTRELL UNIT 1-26  
SW/4 Sec.26-17S-15W  
Barton County, Kansas

Dear Loveness Mpanje:

"Your temporary abandonment (TA) application for the well listed above has been approved. In accordance with K.A.R. 82-3-111 the TA status of this well will expire 05/22/2024.

- \* If you return this well to service or plug it, please notify the District Office.
- \* If you sell this well you are required to file a Transfer of Operator form, T-1.
- \* If the well will remain temporarily abandoned, you must submit a new TA application, CP-111, before 05/22/2024.

You may contact me at the number above if you have questions.

Very truly yours,

RICHARD WILLIAMS"