

KANSAS CORPORATION COMMISSION  
OIL & GAS CONSERVATION DIVISION

TEMPORARY ABANDONMENT WELL APPLICATION

OPERATOR: License# \_\_\_\_\_  
 Name: \_\_\_\_\_  
 Address 1: \_\_\_\_\_  
 Address 2: \_\_\_\_\_  
 City: \_\_\_\_\_ State: \_\_\_\_\_ Zip: \_\_\_\_\_ + \_\_\_\_\_  
 Contact Person: \_\_\_\_\_  
 Phone: ( \_\_\_\_\_ ) \_\_\_\_\_  
 Contact Person Email: \_\_\_\_\_  
 Field Contact Person: \_\_\_\_\_  
 Field Contact Person Phone: ( \_\_\_\_\_ ) \_\_\_\_\_

API No. 15- \_\_\_\_\_  
 Spot Description: \_\_\_\_\_  
 \_\_\_\_\_ - \_\_\_\_\_ - \_\_\_\_\_ - \_\_\_\_\_ Sec. \_\_\_\_\_ Twp. \_\_\_\_\_ S. R. \_\_\_\_\_  E  W  
 \_\_\_\_\_ feet from  N /  S Line of Section  
 \_\_\_\_\_ feet from  E /  W Line of Section  
 GPS Location: Lat: \_\_\_\_\_, Long: \_\_\_\_\_  
(e.g. xx.xxxxx) (e.g. -xxx.xxxxx)  
 Datum:  NAD27  NAD83  WGS84  
 County: \_\_\_\_\_ Elevation: \_\_\_\_\_  GL  KB  
 Lease Name: \_\_\_\_\_ Well #: \_\_\_\_\_  
 Well Type: (check one)  Oil  Gas  OG  WSW  Other: \_\_\_\_\_  
 SWD Permit #: \_\_\_\_\_  ENHR Permit #: \_\_\_\_\_  
 Gas Storage Permit #: \_\_\_\_\_  
 Spud Date: \_\_\_\_\_ Date Shut-In: \_\_\_\_\_

	Conductor	Surface	Production	Intermediate	Liner	Tubing
Size						
Setting Depth						
Amount of Cement						
Top of Cement						
Bottom of Cement						

Casing Fluid Level from Surface: \_\_\_\_\_ How Determined? \_\_\_\_\_ Date: \_\_\_\_\_  
 Casing Squeeze(s): \_\_\_\_\_ to \_\_\_\_\_ w / \_\_\_\_\_ sacks of cement, \_\_\_\_\_ to \_\_\_\_\_ w / \_\_\_\_\_ sacks of cement. Date: \_\_\_\_\_  
(top) (bottom) (top) (bottom)  
 Do you have a valid Oil & Gas Lease?  Yes  No  
 Depth and Type:  Junk in Hole at \_\_\_\_\_  Tools in Hole at \_\_\_\_\_ Casing Leaks:  Yes  No Depth of casing leak(s): \_\_\_\_\_  
(depth) (depth)  
 Type Completion:  ALT. I  ALT. II Depth of:  DV Tool: \_\_\_\_\_ w / \_\_\_\_\_ sacks of cement  Port Collar: \_\_\_\_\_ w / \_\_\_\_\_ sack of cement  
(depth) (depth)  
 Packer Type: \_\_\_\_\_ Size: \_\_\_\_\_ Inch Set at: \_\_\_\_\_ Feet  
 Total Depth: \_\_\_\_\_ Plug Back Depth: \_\_\_\_\_ Plug Back Method: \_\_\_\_\_

**Geological Data:**

Formation Name	Formation Top	Formation Base	Completion Information
1. _____	At: _____	to _____ Feet	Perforation Interval _____ to _____ Feet or Open Hole Interval _____ to _____ Feet
2. _____	At: _____	to _____ Feet	Perforation Interval _____ to _____ Feet or Open Hole Interval _____ to _____ Feet

UNDER PENALTY OF PERJURY I HEREBY ATTEST THAT THE INFORMATION CONTAINED HEREIN IS TRUE AND CORRECT TO THE BEST OF MY KNOWLEDGE

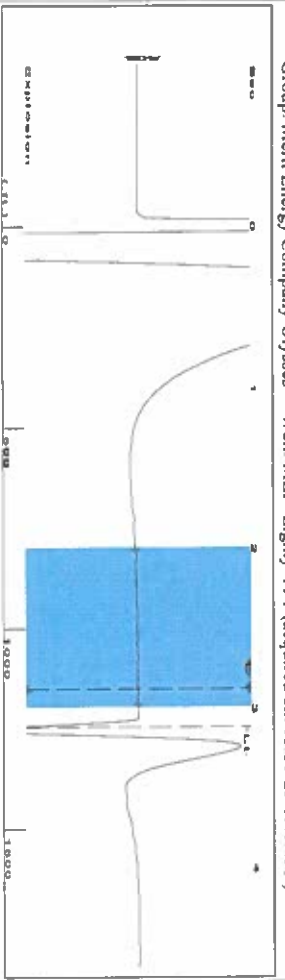
Submitted Electronically

<b>Do NOT Write in This Space - KCC USE ONLY</b>	Date Tested: _____	Results: _____	Date Plugged: _____	Date Repaired: _____	Date Put Back in Service: _____
	Review Completed by: _____ Comments: _____				
TA Approved: <input type="checkbox"/> Yes <input type="checkbox"/> Denied Date: _____					

Mail to the Appropriate KCC Conservation Office:

	KCC District Office #1 - 210 E. Frontview, Suite A, Dodge City, KS 67801	Phone 620.682.7933
	KCC District Office #2 - 3450 N. Rock Road, Building 600, Suite 601, Wichita, KS 67226	Phone 316.337.7400
	KCC District Office #3 - 137 E. 21st St., Chanute, KS 66720	Phone 620.902.6450
	KCC District Office #4 - 2301 E. 13th Street, Hays, KS 67601-2651	Phone 785.261.6250

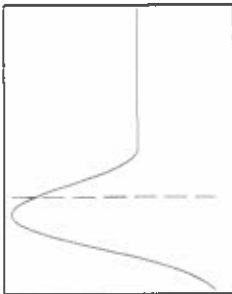
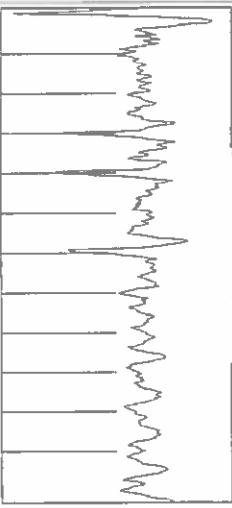
Group: Merit Energy Company-Ulysses Well: MLP Lightly A-1 (acquired on: 05/30/23 15:09:28)



Filter Type High Pass Automatic Collar Count Yes  
 Manual Acoustic Velo 787.578 ft/s Manual JTS/sec 12.4224

Time 3.115 sec  
 Joints 39.2841 Jts  
 Depth 1245.31 ft

[ 2.0 to 3.0 (Sec) ]



Analysis Method: Automatic

Group: Merit Energy Company-Ulysses Well: MLP Lightly A-1 (acquired on: 05/30/23 15:09:28)

Production	Current	Potential	Casing Pressure
Oil	-*-	-*- BB/L/D	1.3 psi (g)
Water	-*-	-*- BB/L/D	Casing Pressure Buildup
Gas	-*-	-*- Misc/F/D	-0.135 psi
IPR Method		Vogel	4.00 min
PBHP/SBHP		Production Efficiency	Gas/Liquid Interface Pressure
		0.0	2.2 psi (g)
Oil	40 deg API	Liquid Level Depth	
Water	1.05 Sp.Gr.H2O	1245.31 ft	
Gas	1.15 Sp.Gr.AIR	Pump Intake Depth	
Acoustic Velocity	799.555 ft/s	5543.00 ft	
		Formation Depth	
		5504.00 ft	



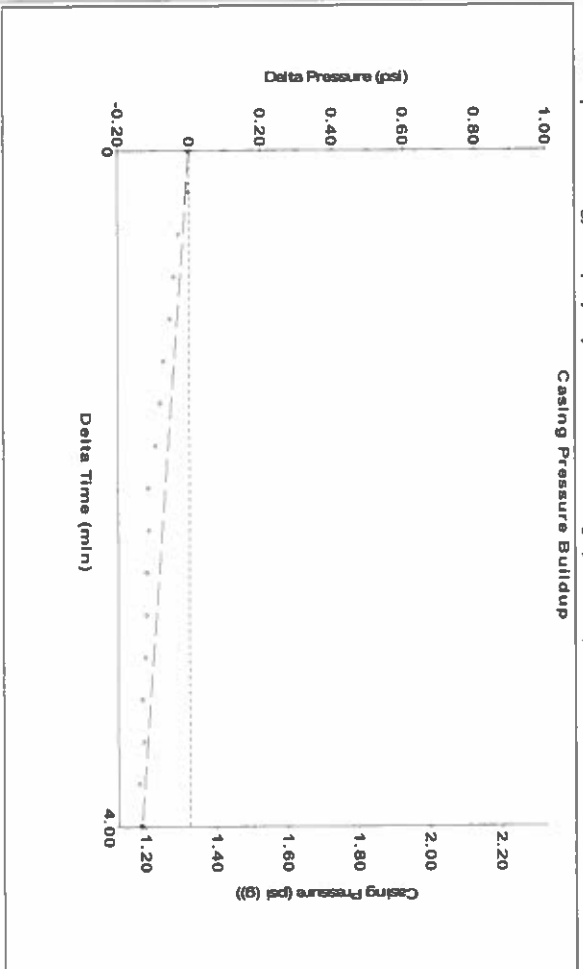
Producing Annular Gas Flow 0 MscFP/D  
 % Liquid 100 %

Pump Intake 1358.4 psi (g)  
 Producing BHP 1347.3 psi (g)  
 Static BHP -\*- psi (g)

Formation Submergence  
 Total Gaseous Liquid Column HT (TVD) 4298 ft  
 Equivalent Gas Free Liquid HT (TVD) 4298 ft

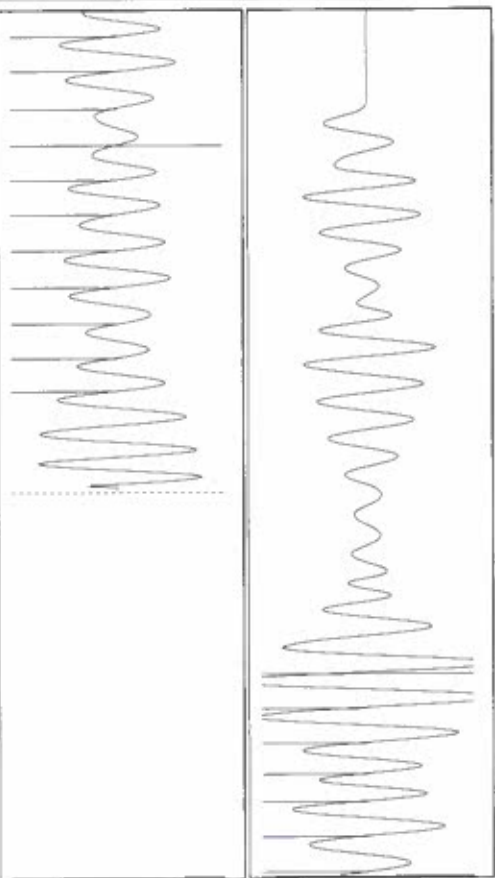
5/30/23

Group: Merit Energy Company-Ulysses Well: MLP Lightly A-1 (acquired on: 05/30/23 15:09:28)



Change in Pressure -0.14 psi PT18865  
 Change in Time 4.00 min Range 0 - ? psi

Group: Merit Energy Company-Ulysses Well: MLP Lightly A-1 (acquired on: 05/30/23 15:09:28)



Acoustic Velocity	799.555 ft/s	Joints counted	17
Joints Per Second	12.6113 Jts/sec	Joints to liquid level	39.2841
Depth to liquid level	1245.31 ft	Filter Width	10.4224
Automatic Collar Count	Yes	Time to 1st Collar	1.532
			2.88

June 01, 2023

Katherine McClurkan  
Merit Energy Company, LLC  
13727 Noel Road, Suite 1200  
Dallas, TX 75240-7362

Re: Temporary Abandonment  
API 15-067-21212-00-01  
MLP Light A 1  
SW/4 Sec.14-30S-35W  
Grant County, Kansas

Dear Katherine McClurkan:

"Your temporary abandonment (TA) application for the well listed above has been approved. In accordance with K.A.R. 82-3-111 the TA status of this well will expire 06/01/2024.

- \* If you return this well to service or plug it, please notify the District Office.
- \* If you sell this well you are required to file a Transfer of Operator form, T-1.
- \* If the well will remain temporarily abandoned, you must submit a new TA application, CP-111, before 06/01/2024.

You may contact me at the number above if you have questions.

Very truly yours,

Michael Maier"