

KANSAS CORPORATION COMMISSION
OIL & GAS CONSERVATION DIVISION

TEMPORARY ABANDONMENT WELL APPLICATION

OPERATOR: License#
Name:
Address 1:
Address 2:
City: State: Zip:
Contact Person:
Phone:
Contact Person Email:
Field Contact Person:
Field Contact Person Phone:

API No. 15-
Spot Description:
Sec. Twp. S. R.
GPS Location: Lat: Long:
Datum: NAD27 NAD83 WGS84
County: Elevation:
Lease Name: Well #:
Well Type: Oil Gas OG WSW Other:
SWD Permit #: ENHR Permit #:
Gas Storage Permit #:
Spud Date: Date Shut-In:

Table with 7 columns: Conductor, Surface, Production, Intermediate, Liner, Tubing. Rows include Size, Setting Depth, Amount of Cement, Top of Cement, Bottom of Cement.

Casing Fluid Level from Surface: How Determined? Date:
Casing Squeeze(s): to w / sacks of cement, to w / sacks of cement. Date:
Do you have a valid Oil & Gas Lease? Yes No
Depth and Type: Junk in Hole at Tools in Hole at Casing Leaks: Yes No Depth of casing leak(s):
Type Completion: ALT. I ALT. II Depth of: DV Tool: w / sacks of cement Port Collar: w / sack of cement
Packer Type: Size: Inch Set at: Feet
Total Depth: Plug Back Depth: Plug Back Method:

Geological Data:

Table with 4 columns: Formation Name, Formation Top, Formation Base, Completion Information. Rows 1 and 2.

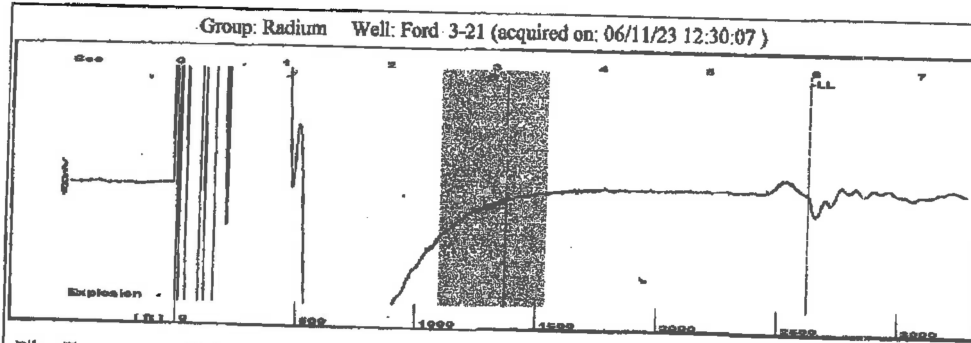
UNDER PENALTY OF PERJURY I HEREBY ATTEST THAT THE INFORMATION CONTAINED HEREIN IS TRUE AND CORRECT TO THE BEST OF MY KNOWLEDGE

Submitted Electronically

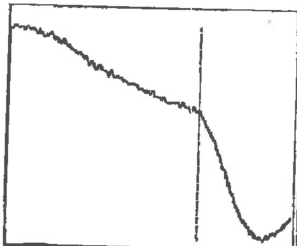
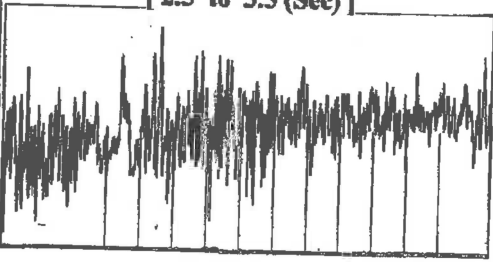
Do NOT Write in This Space - KCC USE ONLY
Date Tested: Results: Date Plugged: Date Repaired: Date Put Back in Service:
Review Completed by: Comments:
TA Approved: Yes Denied Date:

Mail to the Appropriate KCC Conservation Office:

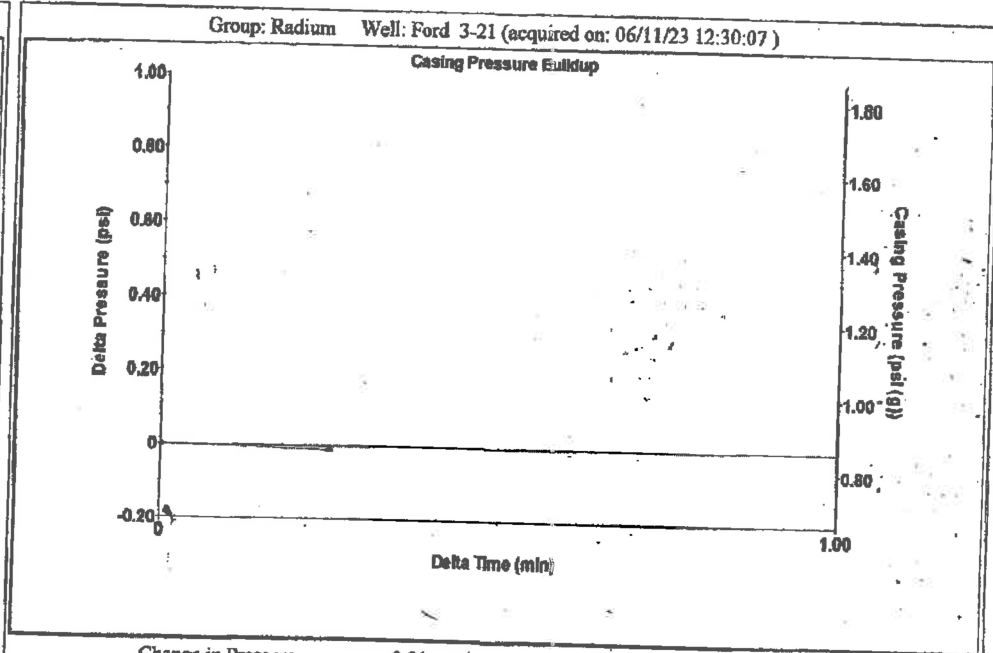
Table with 3 columns: District Office #, Address, Phone. Includes map of Kansas with numbered districts 1-4.



Filter Type High Pass Automatic Collar Count Yes Time 5.954 sec  
 Manual Acoustic Velo 926.901 ft/s Manual JTS/sec 14.6199 Joints 82.6944 Jts  
 Depth 2621.41 ft



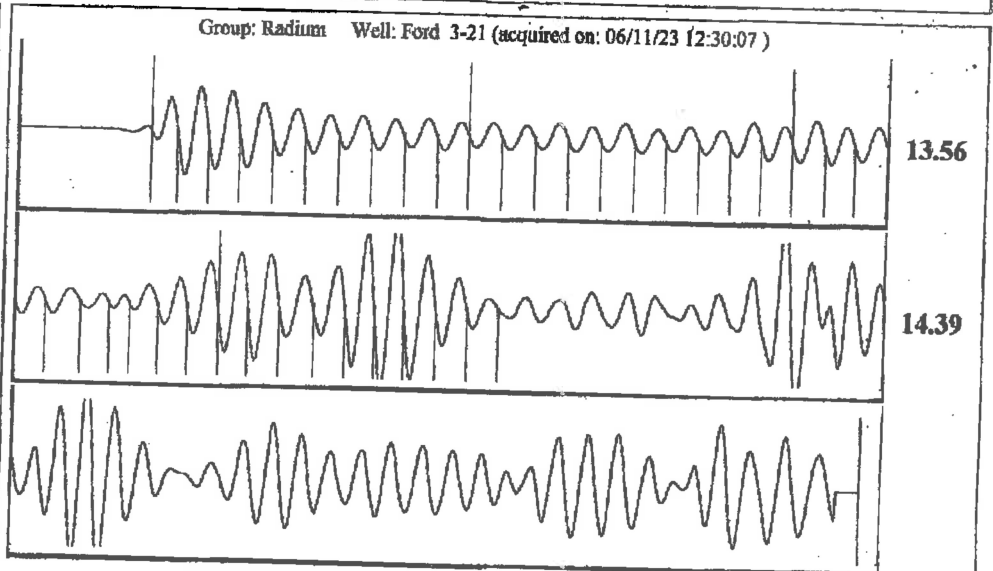
Analysis Method: Automatic



Change in Pressure -0.01 psi PT13440  
 Change in Time 0.25 min Range .0 - ? psi

Group: Radium Well: Ford 3-21 (acquired on: 06/11/23 12:30:07)

Production Current	Potential	Casing Pressure	Producing
Oil * -	* - BBL/D	0.9 psi (g)	
Water * -	* - BBL/D	Casing Pressure Buildup	Annular Gas Flow
Gas * -	* - Mscf/D	-0.0 psi	0 Mscf/D
		0.25 min	% Liquid
IPR Method	Vogel	Gas/Liquid interface Pressure	100 %
PBHP/SBHP	* -	2.4 psi (g)	
Production Efficiency	0.0		
Oil 40 deg.API		Liquid Level Depth	
Water 1.05 Sp.Gr.H2O		2621.41 ft	
Gas 1.09 Sp.Gr.AIR		Pump Intake Depth	
		3649.00 ft	
Acoustic Velocity	880.556 ft/s	Formation Depth	
		3681.00 ft	
Formation Submergence			Pump Intake
Total Gaseous Liquid Column HT (TVD)	1028 ft		351.6 psi (g)
Equivalent Gas Free Liquid HT (TVD)	1028 ft		Producing BHP
			366.2 psi (g)
Acoustic Test			Static BHP
			* - psi (g)



Acoustic Velocity 880.556 ft/s Joints counted 39  
 Joints Per Second 13.8889 jts/sec Joints to liquid level 82.6944  
 Depth to liquid level 2621.41 ft Filter Width 12.6199  
 Automatic Collar Count Yes Time to 1st Collar 0.304 16.6199  
 3.112

June 13, 2023

Loveness Mpanje  
F. G. Holl Company L.L.C.  
9431 E CENTRAL STE 100  
WICHITA, KS 67206-2563

Re: Temporary Abandonment  
API 15-185-23671-00-00  
FORD 3  
SE/4 Sec.21-21S-14W  
Stafford County, Kansas

Dear Loveness Mpanje:

"Your temporary abandonment (TA) application for the well listed above has been approved. In accordance with K.A.R. 82-3-111 the TA status of this well will expire 06/13/2024.

- \* If you return this well to service or plug it, please notify the District Office.
- \* If you sell this well you are required to file a Transfer of Operator form, T-1.
- \* If the well will remain temporarily abandoned, you must submit a new TA application, CP-111, before 06/13/2024.

You may contact me at the number above if you have questions.

Very truly yours,

Michael Maier"