

KANSAS CORPORATION COMMISSION
OIL & GAS CONSERVATION DIVISION

TEMPORARY ABANDONMENT WELL APPLICATION

OPERATOR: License#
Name:
Address 1:
Address 2:
City: State: Zip:
Contact Person:
Phone:
Contact Person Email:
Field Contact Person:
Field Contact Person Phone:

API No. 15-
Spot Description:
Sec. Twp. S. R.
GPS Location: Lat: Long:
Datum: NAD27 NAD83 WGS84
County: Elevation:
Lease Name: Well #:
Well Type: Oil Gas OG WSW Other:
SWD Permit #: ENHR Permit #:
Gas Storage Permit #:
Spud Date: Date Shut-In:

Table with 7 columns: Conductor, Surface, Production, Intermediate, Liner, Tubing. Rows include Size, Setting Depth, Amount of Cement, Top of Cement, Bottom of Cement.

Casing Fluid Level from Surface: How Determined? Date:
Casing Squeeze(s): to w / sacks of cement, to w / sacks of cement. Date:
Do you have a valid Oil & Gas Lease? Yes No
Depth and Type: Junk in Hole at Tools in Hole at Casing Leaks: Yes No Depth of casing leak(s):
Type Completion: ALT. I ALT. II Depth of: DV Tool: w / sacks of cement Port Collar: w / sack of cement
Packer Type: Size: Inch Set at: Feet
Total Depth: Plug Back Depth: Plug Back Method:

Geological Data:

Table with 4 columns: Formation Name, Formation Top, Formation Base, Completion Information. Rows 1 and 2.

UNDER PENALTY OF PERJURY I HEREBY ATTEST THAT THE INFORMATION CONTAINED HEREIN IS TRUE AND CORRECT TO THE BEST OF MY KNOWLEDGE

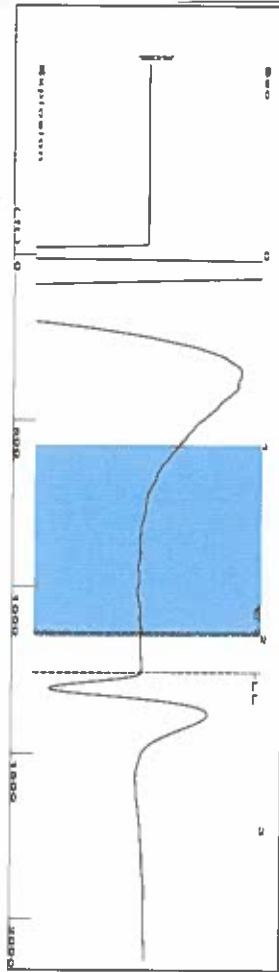
Submitted Electronically

Do NOT Write in This Space - KCC USE ONLY
Date Tested: Results: Date Plugged: Date Repaired: Date Put Back in Service:
Review Completed by: Comments:
TA Approved: Yes Denied Date:

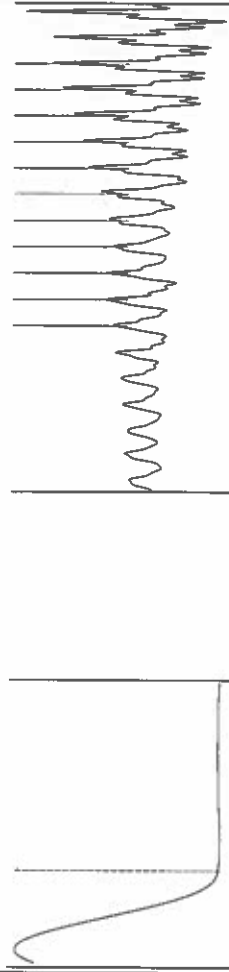
Mail to the Appropriate KCC Conservation Office:

Table with 3 columns: District Office, Address, Phone. Rows for District Office #1, #2, #3, #4.

Group: Liberal Wells Well: Liberal 2-6 (acquired on: 06/11/23 13:33:49)



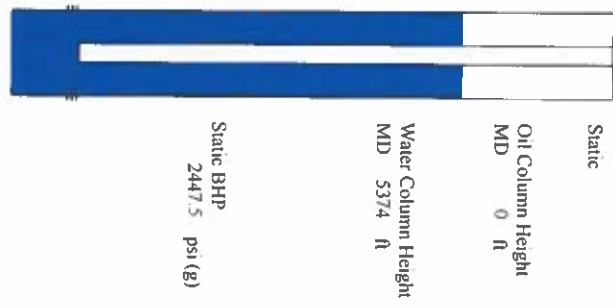
Filter Type High Pass  
 Manual Acoustic Velocity 1148.7 f/s  
 Automatic Collar Count Yes 1858.74  
 Time 2.179 sec  
 Joints 40.634 J/s  
 Depth 1255.59 ft



Analysis Method: Automatic

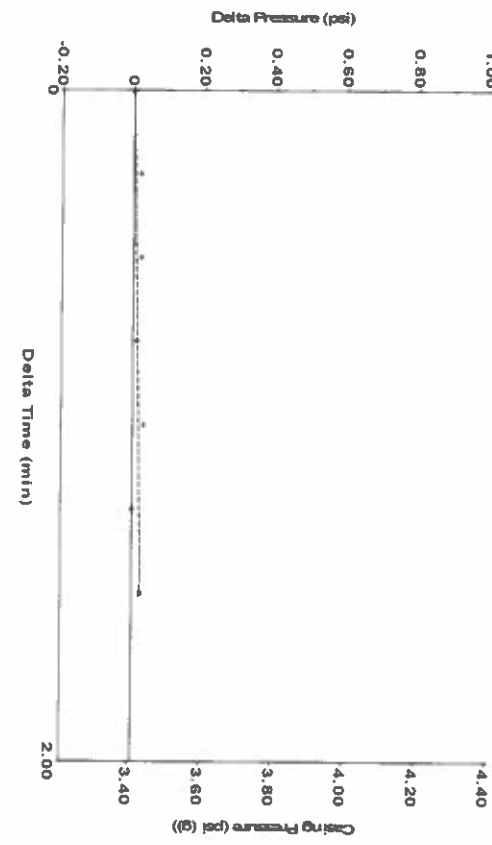
Group: Liberal Wells Well: Liberal 2-6 (acquired on: 06/11/23 13:33:49)

Production	Potential	Casing Pressure	Static
Oil 0	-*- BBL/D	3.4 psi (g)	Oil Column Height MD 0 ft
Water 0	-*- BBL/D	Casing Pressure Buildup 0.0 psi	Water Column Height MD 5374 ft
Gas 0.0	-*- Mscf/D	1.50 min	Static BHP 2447.5 psi (g)
IPR Method PBHP/SBHP	Vogel	Gas/Liquid Interface Pressure 4.1 psi (g)	
Production Efficiency 0.0			
Oil 40 deg API		Liquid Level Depth 1255.59 ft	
Water 1.05 Sp Gr H2O		Pump Intake Depth 6540.00 ft	
Gas 0.82 Sp Gr AIR		Formation Depth 6630.00 ft	
Acoustic Velocity 1152.45 f/s			



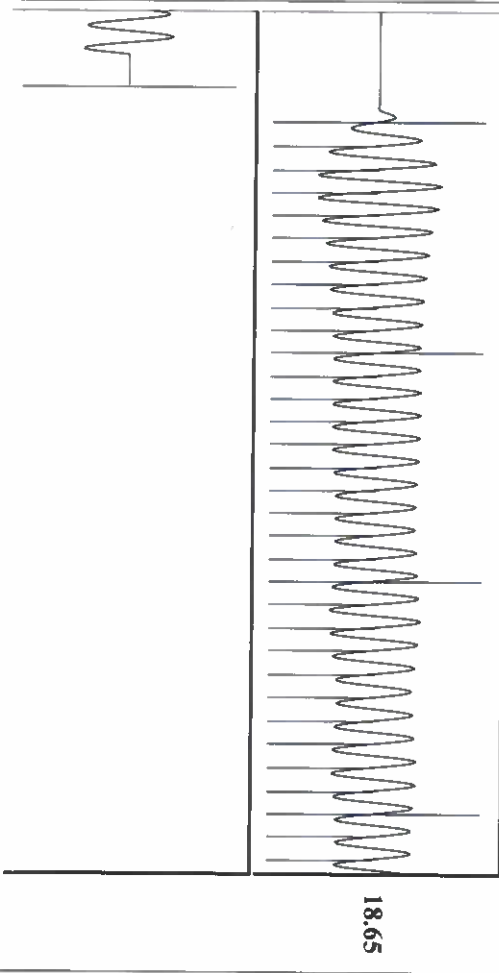
Shot @ 400# JK

Group: Liberal Wells Well: Liberal 2-6 (acquired on: 06/11/23 13:33:49)



Change in Pressure 0.02 psi  
 Change in Time 1.50 min  
 PT 11249 Range

Group: Liberal Wells Well: Liberal 2-6 (acquired on: 06/11/23 13:33:49)



Acoustic Velocity 1152.45 f/s  
 Joints Per Second 18.648 J/s/Sec  
 Depth to Liquid level 1255.59 ft  
 Automatic Collar Count Yes

Joints counted 32  
 Joints to liquid level 40.634  
 Filter Width 16.5874  
 Time to 1st Collar 1.972

June 14, 2023

Katherine McClurkan  
Merit Energy Company, LLC  
13727 Noel Road, Suite 1200  
Dallas, TX 75240-7362

Re: Temporary Abandonment  
API 15-175-21216-00-00  
Liberal 2-6  
NE/4 Sec.06-35S-33W  
Seward County, Kansas

Dear Katherine McClurkan:

"Your temporary abandonment (TA) application for the well listed above has been approved. In accordance with K.A.R. 82-3-111 the TA status of this well will expire 06/14/2024.

- \* If you return this well to service or plug it, please notify the District Office.
- \* If you sell this well you are required to file a Transfer of Operator form, T-1.
- \* If the well will remain temporarily abandoned, you must submit a new TA application, CP-111, before 06/14/2024.

You may contact me at the number above if you have questions.

Very truly yours,

Michael Maier"