

KANSAS CORPORATION COMMISSION
OIL & GAS CONSERVATION DIVISION

TEMPORARY ABANDONMENT WELL APPLICATION

OPERATOR: License#
Name:
Address 1:
Address 2:
City: State: Zip:
Contact Person:
Phone:
Contact Person Email:
Field Contact Person:
Field Contact Person Phone:

API No. 15-
Spot Description:
Sec. Twp. S. R.
GPS Location: Lat: Long:
Datum: NAD27 NAD83 WGS84
County: Elevation:
Lease Name: Well #:
Well Type: Oil Gas OG WSW Other:
SWD Permit #: ENHR Permit #:
Gas Storage Permit #:
Spud Date: Date Shut-In:

Table with 7 columns: Conductor, Surface, Production, Intermediate, Liner, Tubing. Rows include Size, Setting Depth, Amount of Cement, Top of Cement, Bottom of Cement.

Casing Fluid Level from Surface: How Determined? Date:
Casing Squeeze(s): to w / sacks of cement, to w / sacks of cement. Date:
Do you have a valid Oil & Gas Lease? Yes No
Depth and Type: Junk in Hole at Tools in Hole at Casing Leaks: Yes No Depth of casing leak(s):
Type Completion: ALT. I ALT. II Depth of: DV Tool: w / sacks of cement Port Collar: w / sack of cement
Packer Type: Size: Inch Set at: Feet
Total Depth: Plug Back Depth: Plug Back Method:

Geological Data:

Table with 4 columns: Formation Name, Formation Top, Formation Base, Completion Information. Rows 1 and 2.

UNDER PENALTY OF PERJURY I HEREBY ATTEST THAT THE INFORMATION CONTAINED HEREIN IS TRUE AND CORRECT TO THE BEST OF MY KNOWLEDGE

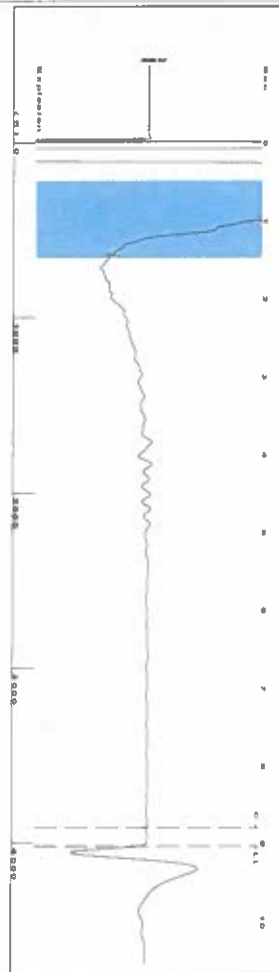
Submitted Electronically

Do NOT Write in This Space - KCC USE ONLY
Date Tested: Results: Date Plugged: Date Repaired: Date Put Back in Service:
Review Completed by: Comments:
TA Approved: Yes Denied Date:

Mail to the Appropriate KCC Conservation Office:

Table with 2 columns: Office Address, Phone. Rows for KCC District Office #1, #2, #3, #4.

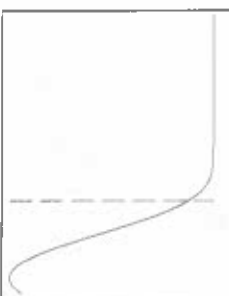
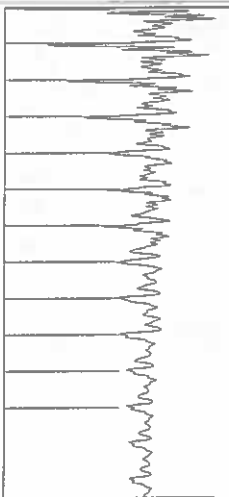
Group: SUBLETTE Well: McKinley 15P (acquired on: 06/21/23 11:44:32)



Filter Type High Pass Automatic Collar Count Yes  
 Manual Acoustic Vel 872.118 ft/s Manual JTS/sec 13.4048

Time 9.051 sec  
 Joints 123.52 J/s  
 Depth 4018.09 ft

0.5 to 1.5 (Sec)



Analysis Method: Automatic

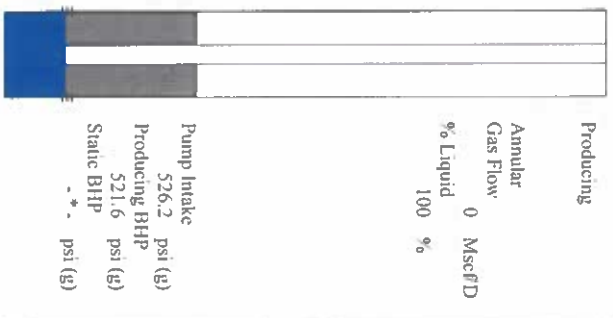
Group: SUBLETTE Well: McKinley 15P (acquired on: 06/21/23 11:44:32)

Production	Potential	Casing Pressure	Producing
Current	-* BBL/D	12.8 psi (g)	Annular
Oil -*	-* BBL/D	Casing Pressure Buildup	Gas Flow
Water -*	-* Mscf/D	-0.0 psi	% Liquid
Gas -*		1.00 min	100 %
IPR Method	Vogel	Gas Liquid Interface Pressure	Mscf/D
PBHIP/SBHIP	-*	17.2 psi (g)	
Production Efficiency	0.0	Liquid Level Depth	

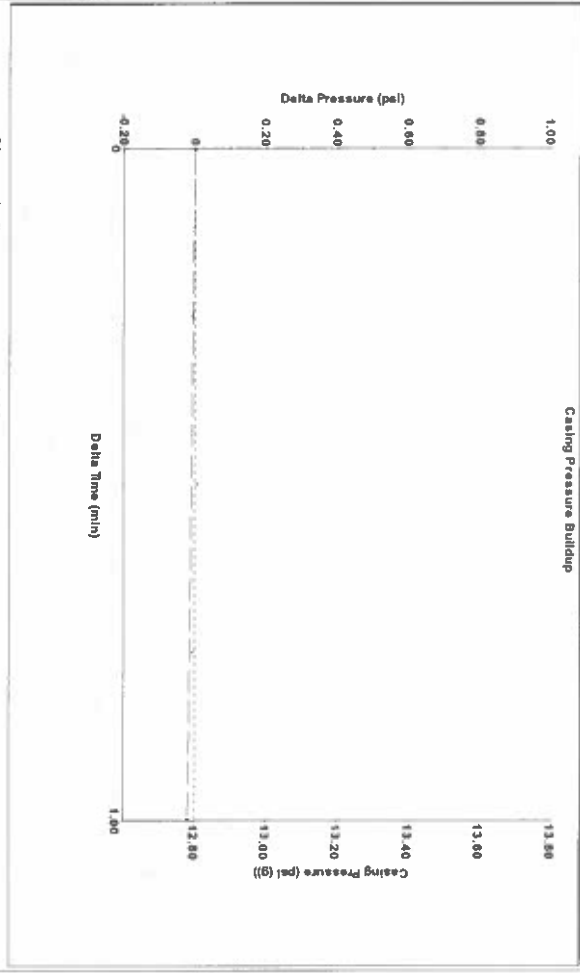
Oil 40 deg API	Water 1.05 Sp.Gr.H2O	Gas 1.08 Sp.Gr.AIR	Acoustic Velocity 887.878 ft/s
Liquid Intake Depth 4018.09 ft	Pump Intake Depth 5535.00 ft	Formation Depth 5521.00 ft	

Formation Submergence 1517 ft  
 Total Gaseous Liquid Column HIT (TVD) 1517 ft  
 Equivalent Gas Free Liquid HIT (TVD) 1517 ft

6/21/23

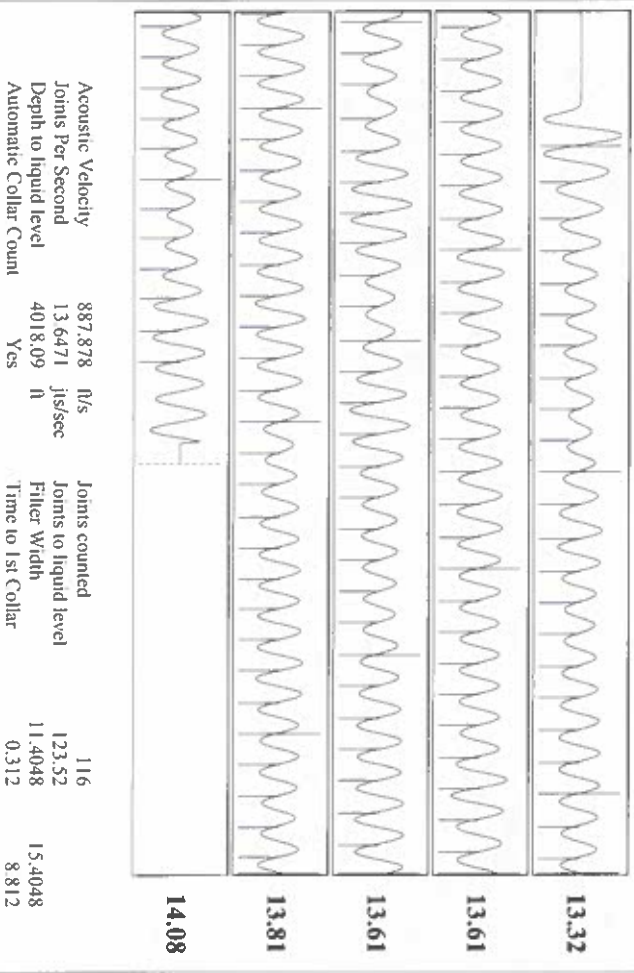


Group: SUBLETTE Well: McKinley 15P (acquired on: 06/21/23 11:44:32)



Change in Pressure -0.02 psi  
 Change in Time 1.00 min  
 PT16716 Range  
 0 - 7 psi

Group: SUBLETTE Well: McKinley 15P (acquired on: 06/21/23 11:44:32)



Acoustic Velocity	887.878 ft/s	Joints counted	116
Joints Per Second	13.6471 J/s	Joints to liquid level	123.52
Depth to liquid level	4018.09 ft	Filter Width	11.4048
Automatic Collar Count	Yes	Time to 1st Collar	0.312

June 23, 2023

Katherine McClurkan  
Merit Energy Company, LLC  
13727 Noel Road, Suite 1200  
Dallas, TX 75240-7362

Re: Temporary Abandonment  
API 15-081-21647-00-02  
McKinley 15-P19-30-33  
SE/4 Sec.19-30S-33W  
Haskell County, Kansas

Dear Katherine McClurkan:

"Your temporary abandonment (TA) application for the well listed above has been approved. In accordance with K.A.R. 82-3-111 the TA status of this well will expire 06/23/2024.

- \* If you return this well to service or plug it, please notify the District Office.
- \* If you sell this well you are required to file a Transfer of Operator form, T-1.
- \* If the well will remain temporarily abandoned, you must submit a new TA application, CP-111, before 06/23/2024.

You may contact me at the number above if you have questions.

Very truly yours,

Michael Maier"