

KANSAS CORPORATION COMMISSION
OIL & GAS CONSERVATION DIVISION

TEMPORARY ABANDONMENT WELL APPLICATION

OPERATOR: License#
Name:
Address 1:
Address 2:
City: State: Zip:
Contact Person:
Phone:
Contact Person Email:
Field Contact Person:
Field Contact Person Phone:

API No. 15-
Spot Description:
Sec. Twp. S. R.
feet from N / S Line of Section
feet from E / W Line of Section
GPS Location: Lat: , Long:
Datum: NAD27 NAD83 WGS84
County: Elevation: GL KB
Lease Name: Well #:
Well Type: (check one) Oil Gas OG WSW Other:
SWD Permit #: ENHR Permit #:
Gas Storage Permit #:
Spud Date: Date Shut-In:

Table with 7 columns: Conductor, Surface, Production, Intermediate, Liner, Tubing. Rows include Size, Setting Depth, Amount of Cement, Top of Cement, Bottom of Cement.

Casing Fluid Level from Surface: How Determined? Date:
Casing Squeeze(s): to w / sacks of cement, to w / sacks of cement. Date:
Do you have a valid Oil & Gas Lease? Yes No
Depth and Type: Junk in Hole at Tools in Hole at Casing Leaks: Yes No Depth of casing leak(s):
Type Completion: ALT. I ALT. II Depth of: DV Tool: w / sacks of cement Port Collar: w / sack of cement
Packer Type: Size: Inch Set at: Feet
Total Depth: Plug Back Depth: Plug Back Method:

Geological Data:

Table with 4 columns: Formation Name, Formation Top, Formation Base, Completion Information. Rows 1 and 2.

UNDER PENALTY OF PERJURY I HEREBY ATTEST THAT THE INFORMATION CONTAINED HEREIN IS TRUE AND CORRECT TO THE BEST OF MY KNOWLEDGE

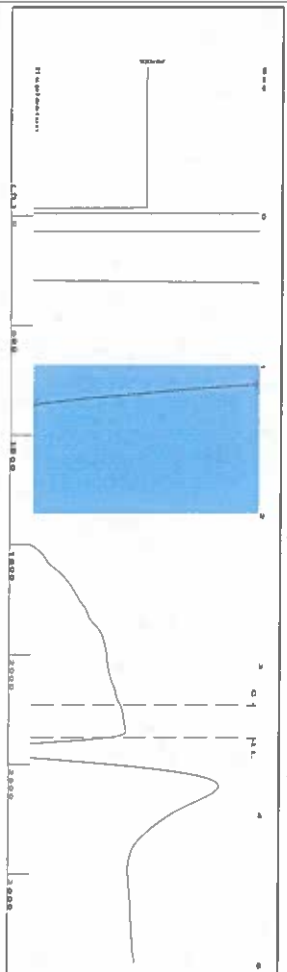
Submitted Electronically

Do NOT Write in This Space - KCC USE ONLY
Date Tested: Results: Date Plugged: Date Repaired: Date Put Back in Service:
Review Completed by: Comments:
TA Approved: Yes Denied Date:

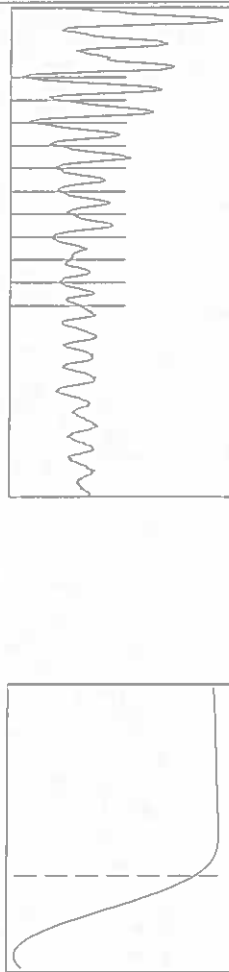
Mail to the Appropriate KCC Conservation Office:

Table with 3 columns: District Office #, Address, Phone. Rows 1-4.

Group: SUBLETTE Well: Burton A-5 (acquired on: 06/21/23 13:48:56)



Filter Type High Pass
 Manual Acoustic Veloc 1354.7 ft/s
 Automatic Collar Count Yes
 Manual JTS/Sec 21.3675
 Time 3.487 sec
 Joints 74.9892 JIS
 Depth 2377.16 ft

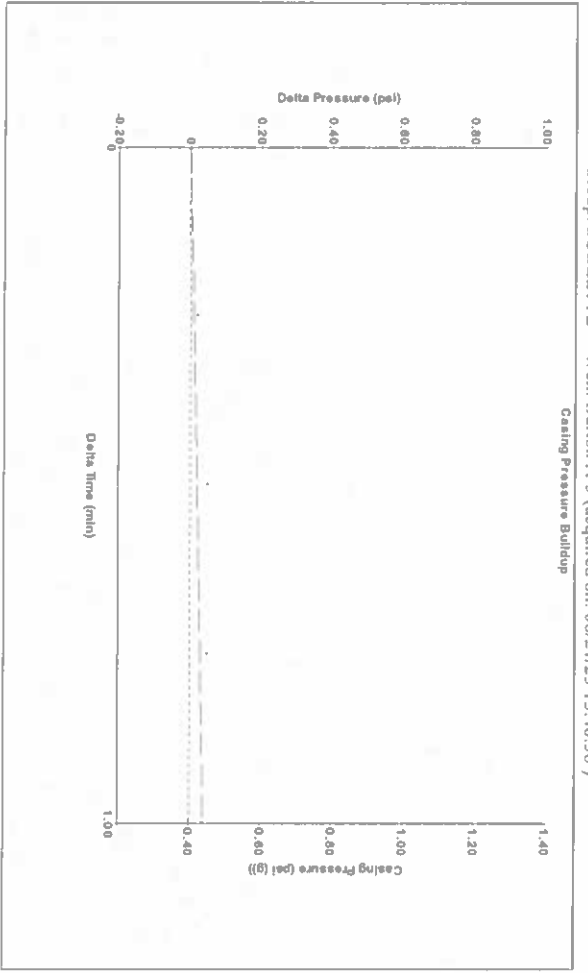


Analysis Method: Automatic

Group: SUBLETTE Well: Burton A-5 (acquired on: 06/21/23 13:48:56)

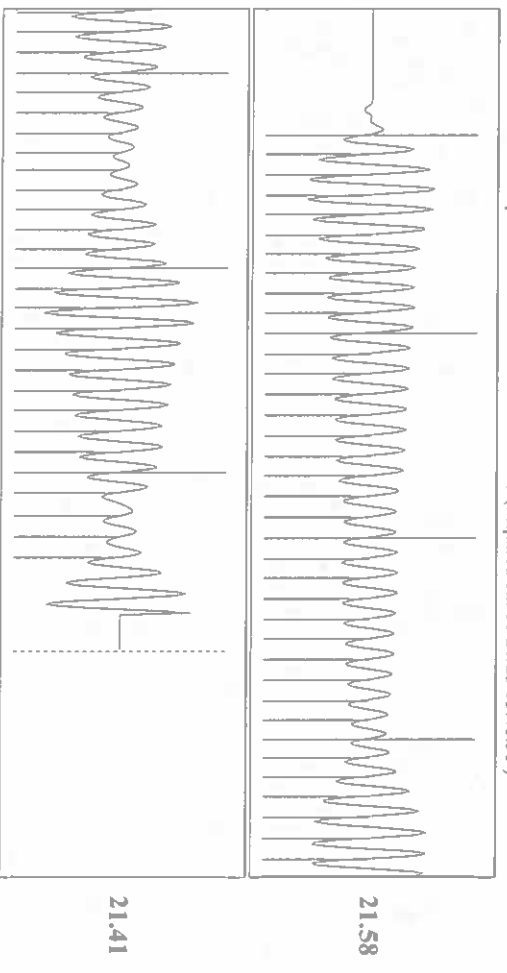
Production Current	Potential	Casing Pressure	Producing
Oil -*	-*	0.4 psi (g)	Annular Gas Flow
Water -*	-*	Casing Pressure Buildup	% Liquid 97
Gas -*	-*	1.00 min	% Misc/D
IPR Method PBHP/SBHP	Vogel	Gas/Liquid Interface Pressure	
Production Efficiency 0.0		1.2 psi (g)	
Oil 40 deg API		Liquid Level Depth	
Water 1.05 Sp.Gr./120		2377.16 ft	
Gas 0.65 Sp.Gr./AIR		Pump Intake Depth	
Acoustic Velocity 1363.44 ft/s		2972.00 ft	
		Formation Depth	
		2881.00 ft	
Formation Submergence			Pump Intake
Total Gaseous Liquid Column HT (TVD)			196.9 psi (g)
Equivalent Gas Free Liquid HT (TVD)			Producing BHP
			166.6 psi (g)
			Static BHP
			-* psi (g)

Group: SUBLETTE Well: Burton A-5 (acquired on: 06/21/23 13:48:56)



Change in Pressure 0.04 psi
 Change in Time 1.00 min
 PTT16716
 Range 0 - ? psi

Group: SUBLETTE Well: Burton A-5 (acquired on: 06/21/23 13:48:56)



Acoustic Velocity 1363.44 ft/s
 Joints Per Second 21.5054 JIS/Sec
 Depth to liquid level 2377.16 ft
 Automatic Collar Count Yes
 Joints counted 64
 Joints to liquid level 74.9892
 Filter Width 19.3675
 Time to 1st Collar 0.292

June 23, 2023

Katherine McClurkan
Merit Energy Company, LLC
13727 Noel Road, Suite 1200
Dallas, TX 75240-7362

Re: Temporary Abandonment
API 15-081-21471-00-00
Burton A 5
NE/4 Sec.06-29S-34W
Haskell County, Kansas

Dear Katherine McClurkan:

"Your temporary abandonment (TA) application for the well listed above has been approved. In accordance with K.A.R. 82-3-111 the TA status of this well will expire 06/23/2024.

- * If you return this well to service or plug it, please notify the District Office.
- * If you sell this well you are required to file a Transfer of Operator form, T-1.
- * If the well will remain temporarily abandoned, you must submit a new TA application, CP-111, before 06/23/2024.

You may contact me at the number above if you have questions.

Very truly yours,

Michael Maier"