

KANSAS CORPORATION COMMISSION
OIL & GAS CONSERVATION DIVISION

TEMPORARY ABANDONMENT WELL APPLICATION

OPERATOR: License# \_\_\_\_\_
Name: \_\_\_\_\_
Address 1: \_\_\_\_\_
Address 2: \_\_\_\_\_
City: \_\_\_\_\_ State: \_\_\_\_\_ Zip: \_\_\_\_\_ + \_\_\_\_\_
Contact Person: \_\_\_\_\_
Phone:( \_\_\_\_\_ ) \_\_\_\_\_
Contact Person Email: \_\_\_\_\_
Field Contact Person: \_\_\_\_\_
Field Contact Person Phone: ( \_\_\_\_\_ ) \_\_\_\_\_

API No. 15- \_\_\_\_\_
Spot Description: \_\_\_\_\_
- - - - - Sec. \_\_\_\_\_ Twp. \_\_\_\_\_ S. R. \_\_\_\_\_ E W
\_\_\_\_\_ feet from N / S Line of Section
\_\_\_\_\_ feet from E / W Line of Section
GPS Location: Lat: \_\_\_\_\_, Long: \_\_\_\_\_
Datum: NAD27 NAD83 WGS84
County: \_\_\_\_\_ Elevation: \_\_\_\_\_ GL KB
Lease Name: \_\_\_\_\_ Well #: \_\_\_\_\_
Well Type: (check one) Oil Gas OG WSW Other: \_\_\_\_\_
SWD Permit #: \_\_\_\_\_ ENHR Permit #: \_\_\_\_\_
Gas Storage Permit #: \_\_\_\_\_
Spud Date: \_\_\_\_\_ Date Shut-In: \_\_\_\_\_

Table with 7 columns: Conductor, Surface, Production, Intermediate, Liner, Tubing. Rows include Size, Setting Depth, Amount of Cement, Top of Cement, Bottom of Cement.

Casing Fluid Level from Surface: \_\_\_\_\_ How Determined? \_\_\_\_\_ Date: \_\_\_\_\_
Casing Squeeze(s): \_\_\_\_\_ to \_\_\_\_\_ w / \_\_\_\_\_ sacks of cement, \_\_\_\_\_ to \_\_\_\_\_ w / \_\_\_\_\_ sacks of cement. Date: \_\_\_\_\_
Do you have a valid Oil & Gas Lease? Yes No
Depth and Type: Junk in Hole at \_\_\_\_\_ Tools in Hole at \_\_\_\_\_ Casing Leaks: Yes No Depth of casing leak(s): \_\_\_\_\_
Type Completion: ALT. I ALT. II Depth of: DV Tool: \_\_\_\_\_ w / \_\_\_\_\_ sacks of cement Port Collar: \_\_\_\_\_ w / \_\_\_\_\_ sack of cement
Packer Type: \_\_\_\_\_ Size: \_\_\_\_\_ Inch Set at: \_\_\_\_\_ Feet
Total Depth: \_\_\_\_\_ Plug Back Depth: \_\_\_\_\_ Plug Back Method: \_\_\_\_\_

Geological Date:

Table with 4 columns: Formation Name, Formation Top, Formation Base, Completion Information. Rows 1 and 2.

UNDER PENALTY OF PERJURY I HEREBY ATTEST THAT THE INFORMATION CONTAINED HEREIN IS TRUE AND CORRECT TO THE BEST OF MY KNOWLEDGE

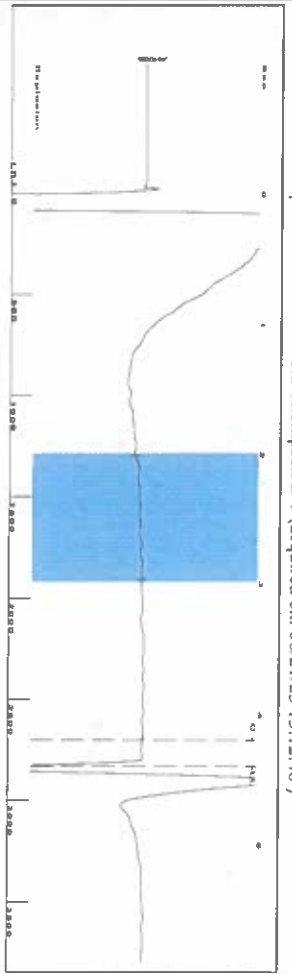
Submitted Electronically

Do NOT Write in This Space - KCC USE ONLY
Date Tested: \_\_\_\_\_ Results: \_\_\_\_\_ Date Plugged: \_\_\_\_\_ Date Repaired: \_\_\_\_\_ Date Put Back in Service: \_\_\_\_\_
Review Completed by: \_\_\_\_\_ Comments: \_\_\_\_\_
TA Approved: Yes Denied Date: \_\_\_\_\_

Mail to the Appropriate KCC Conservation Office:

Table with 3 columns: District Office #, Address, Phone. Rows 1-4.

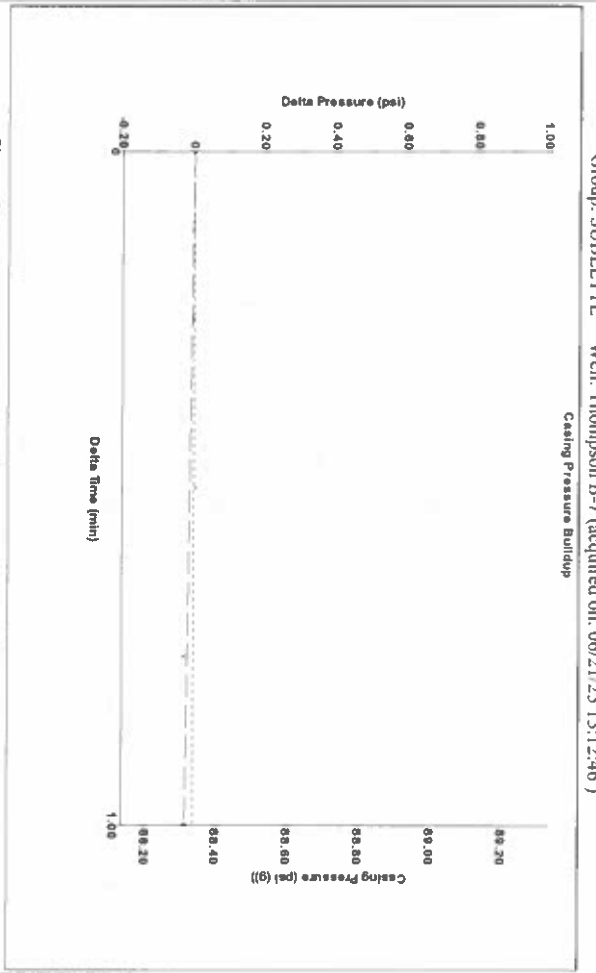
Group: SUBLETTE Well: Thompson B-7 (acquired on: 06/21/23 13:12:46)



Filter Type High Pass Automatic Collar Count Yes  
 Manual Acoustic Vel 301.85 Manual JIS/sec 20.5339  
 Time 4.397 sec  
 Joints 89.2792 JIS  
 Depth 2830.15 ft



Group: SUBLETTE Well: Thompson B-7 (acquired on: 06/21/23 13:12:46)



Change in Pressure -0.02 psi PTJ6716  
 Change in Time 1.00 min Range 0 - 7 psi

Group: SUBLETTE Well: Thompson B-7 (acquired on: 06/21/23 13:12:46)

Production Current	Potential	Casing Pressure	Producing
Oil -*- BBLD	-*- BBLD	88.3 psi (g)	Annular Gas Flow
Water -*- BBLD	-*- BBLD	Casing Pressure Buildup	0 Mscf/D
Gas -*- Mscf/D	-*- Mscf/D	-0.0 psi	% Liquid
		1.00 min	100 %
IPR Method	Vogel	Gas/Liquid Interface Pressure	
PBHP/SBHP	-*-	95.6 psi (g)	
Production Efficiency	0.0		
Oil 40 deg API		Liquid Level Depth	
Water 1.05 Sp.Gr.H2O		2830.15 ft	
Gas 0.70 Sp.Gr.AIR		Pump Intake Depth	
Acoustic Velocity	1287.31 ft/s	4941.00 ft	
		Formation Depth	
		4040.00 ft	



Formation Submergence  
 Total Gaseous Liquid Column HIT (TVD) 2111 ft  
 Equivalent Gas Free Liquid HIT (TVD) 2111 ft

20.41

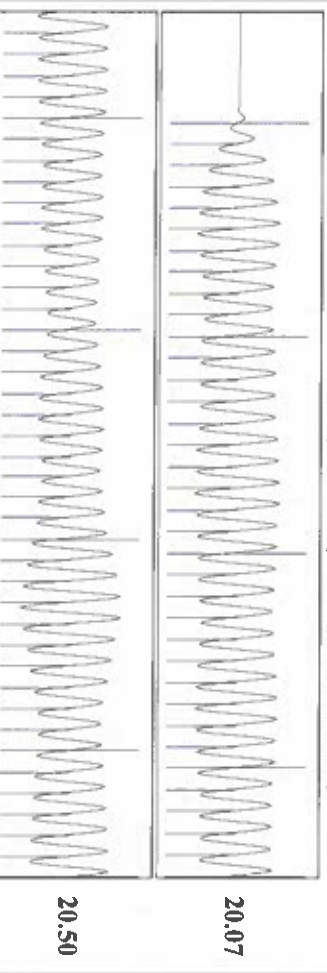
Group: SUBLETTE Well: Thompson B-7 (acquired on: 06/21/23 13:12:46)



Acoustic Velocity 1287.31 ft/s  
 Joints Per Second 20.3046 JIS/sec  
 Depth to liquid level 2830.15 ft  
 Automatic Collar Count Yes

20.50

Group: SUBLETTE Well: Thompson B-7 (acquired on: 06/21/23 13:12:46)



Acoustic Velocity 1287.31 ft/s  
 Joints counted 80  
 Joints to liquid level 89.2792  
 Filler Width 18.5339  
 Time to 1st Collar 0.256

20.07

June 23, 2023

Katherine McClurkan  
Merit Energy Company, LLC  
13727 Noel Road, Suite 1200  
Dallas, TX 75240-7362

Re: Temporary Abandonment  
API 15-081-20617-00-02  
Thompson B 7  
NW/4 Sec.31-30S-33W  
Haskell County, Kansas

Dear Katherine McClurkan:

"Your temporary abandonment (TA) application for the well listed above has been approved. In accordance with K.A.R. 82-3-111 the TA status of this well will expire 06/23/2024.

- \* If you return this well to service or plug it, please notify the District Office.
- \* If you sell this well you are required to file a Transfer of Operator form, T-1.
- \* If the well will remain temporarily abandoned, you must submit a new TA application, CP-111, before 06/23/2024.

You may contact me at the number above if you have questions.

Very truly yours,

Michael Maier"